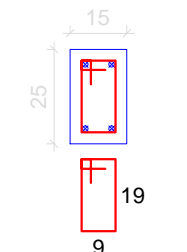


P1=P4=P6=P7=P8=P10

RESPALDO/CINTA - L2
ESC 1:20



25 N1 ø5.0 C=68

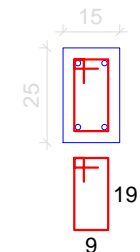
297
4 N3 ø10.0 C=297

300
25 N1 c/12

ESC 1:25

P2=P5

RESPALDO/CINTA - L2
ESC 1:20



25 N1 ø5.0 C=68

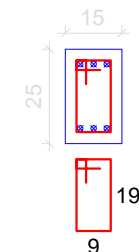
38
300
4 N4 ø10.0 C=338

300
25 N1 c/12

ESC 1:25

P3

RESPALDO/CINTA - L2
ESC 1:20



25 N1 ø5.0 C=68

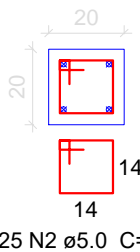
297
6 N3 ø10.0 C=297

300
25 N1 c/12

ESC 1:25

P9=P11

RESPALDO/CINTA - L2
ESC 1:20



25 N2 ø5.0 C=68

297
4 N3 ø10.0 C=297

300
25 N2 c/12

ESC 1:25

Resumo do aço

AÇO	DIAM (mm)	C.TOTAL (m)	PESO + 10 % (kg)
CA50	10.0	139.9	94.9
CA60	5.0	187	31.7
PESO TOTAL (kg)			
CA50			94.9
CA60			31.7

Volume de concreto (C-25) = 1.25 m³
Área de forma = 26.4 m²

Relação do aço

AÇO	N	DIAM (mm)	QUANT	6xP1 2xP9	
				C.UNIT (cm)	C.TOTAL (cm)
CA60	1	5.0	225	68	15300
	2	5.0	50	68	3400
CA50	3	10.0	38	297	11286
	4	10.0	8	338	2704

Luiz Carlos Schmuler
PREFEITO

Antony N. Fernandes
RESPONSÁVEL TÉCNICO



PREFEITURA MUNICIPAL DE BOCAINA DO SUL

ACADEMIA DE SAUDE

ESTRUTURAL - Detalhe dos Pilares de Cobertura

ART:
6921134-5

PREFEITO
Luiz Carlos Schmuler

ESCALA:
1:50

RESPONSÁVEL TÉCNICO
Eng. Antony N. Fernandes

CREA N°
136779-8

PRANCHA N°
06/11

