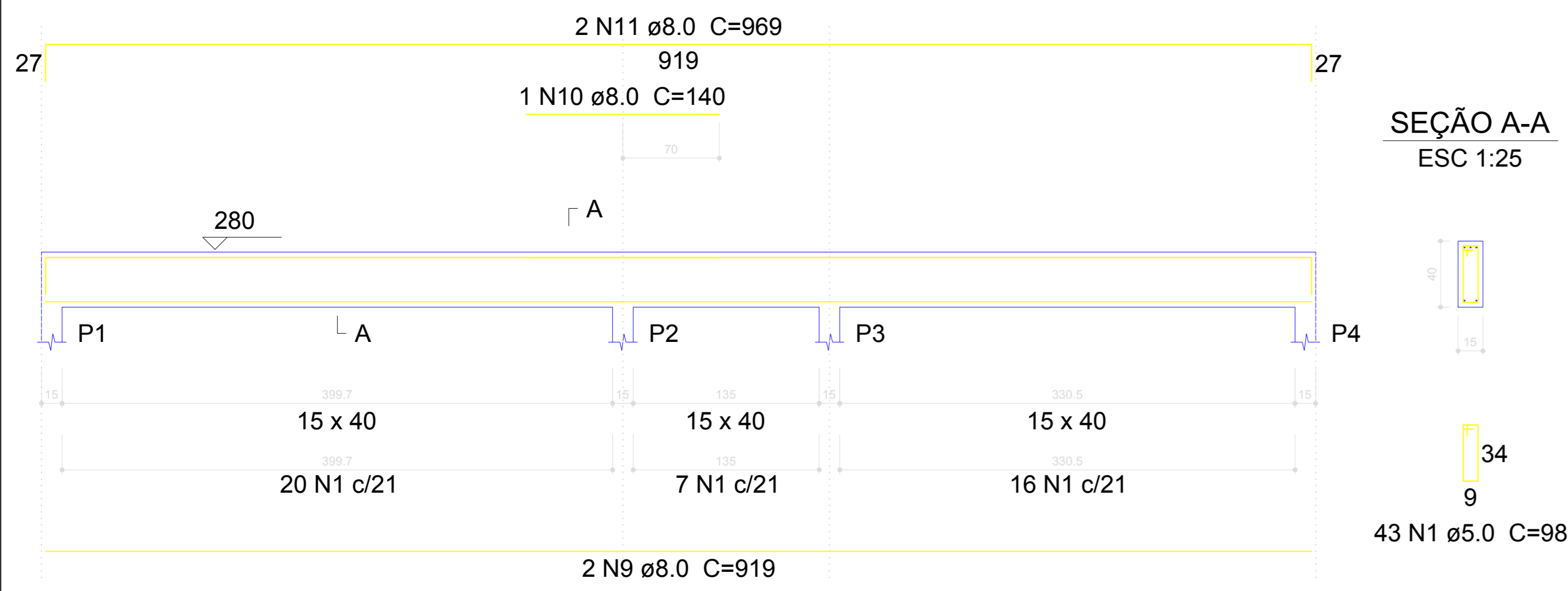
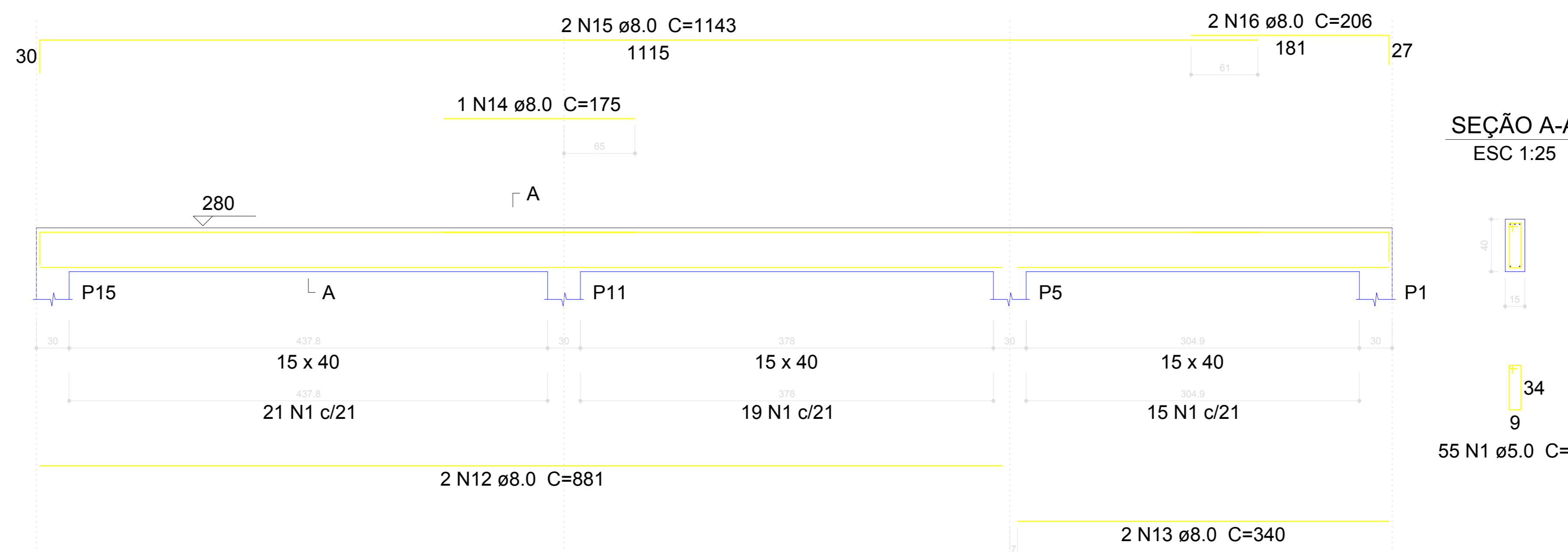


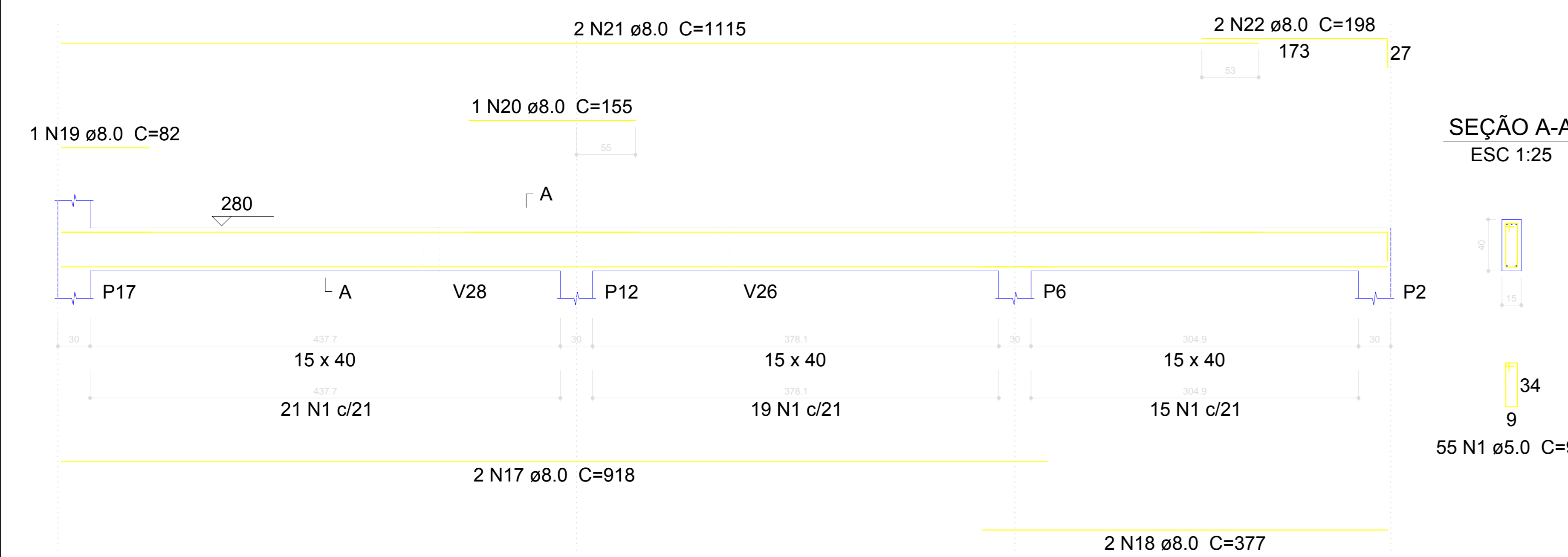
**V24**  
ESC 1:30



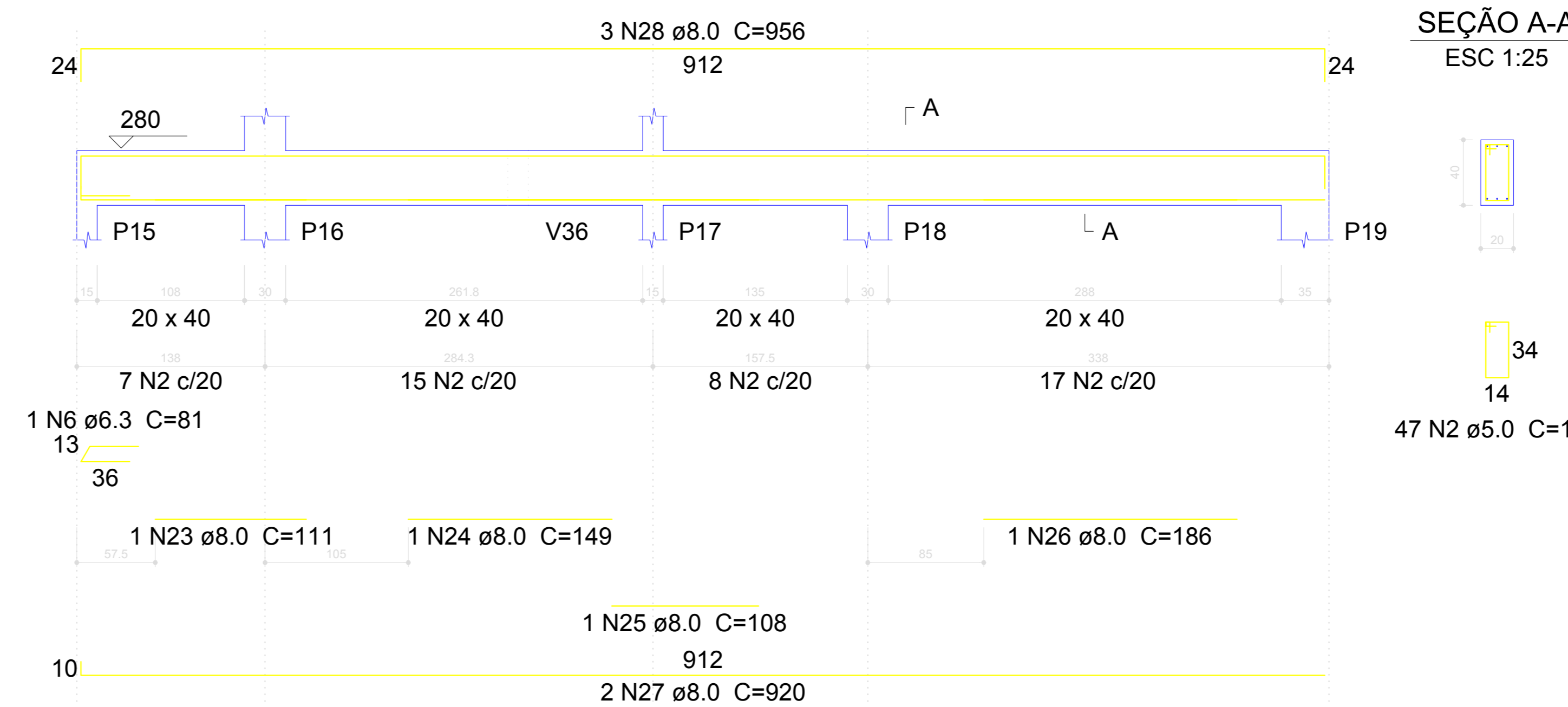
**V34**  
ESC 1:30



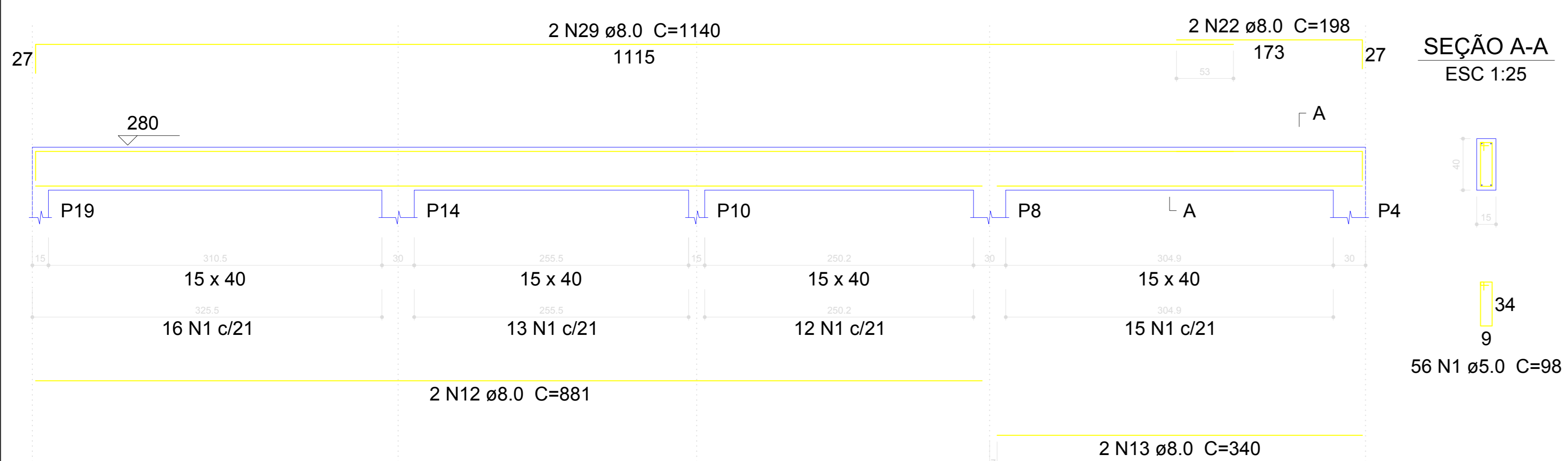
**V39**  
ESC 1:30



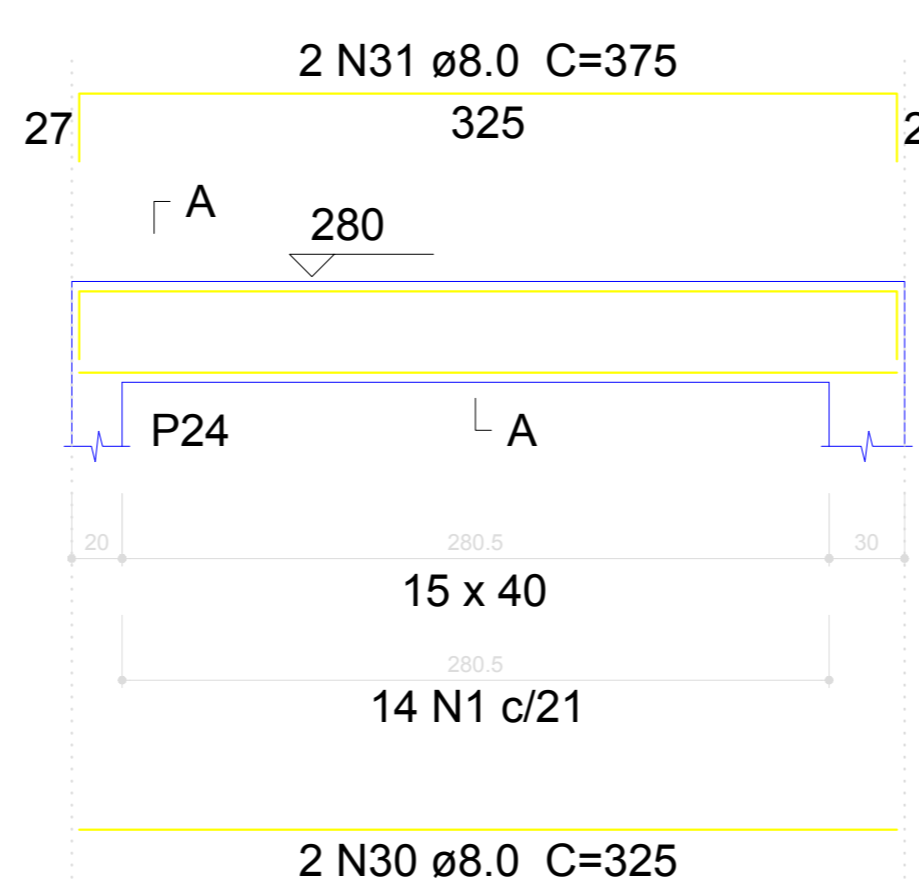
**V29**  
ESC 1:30



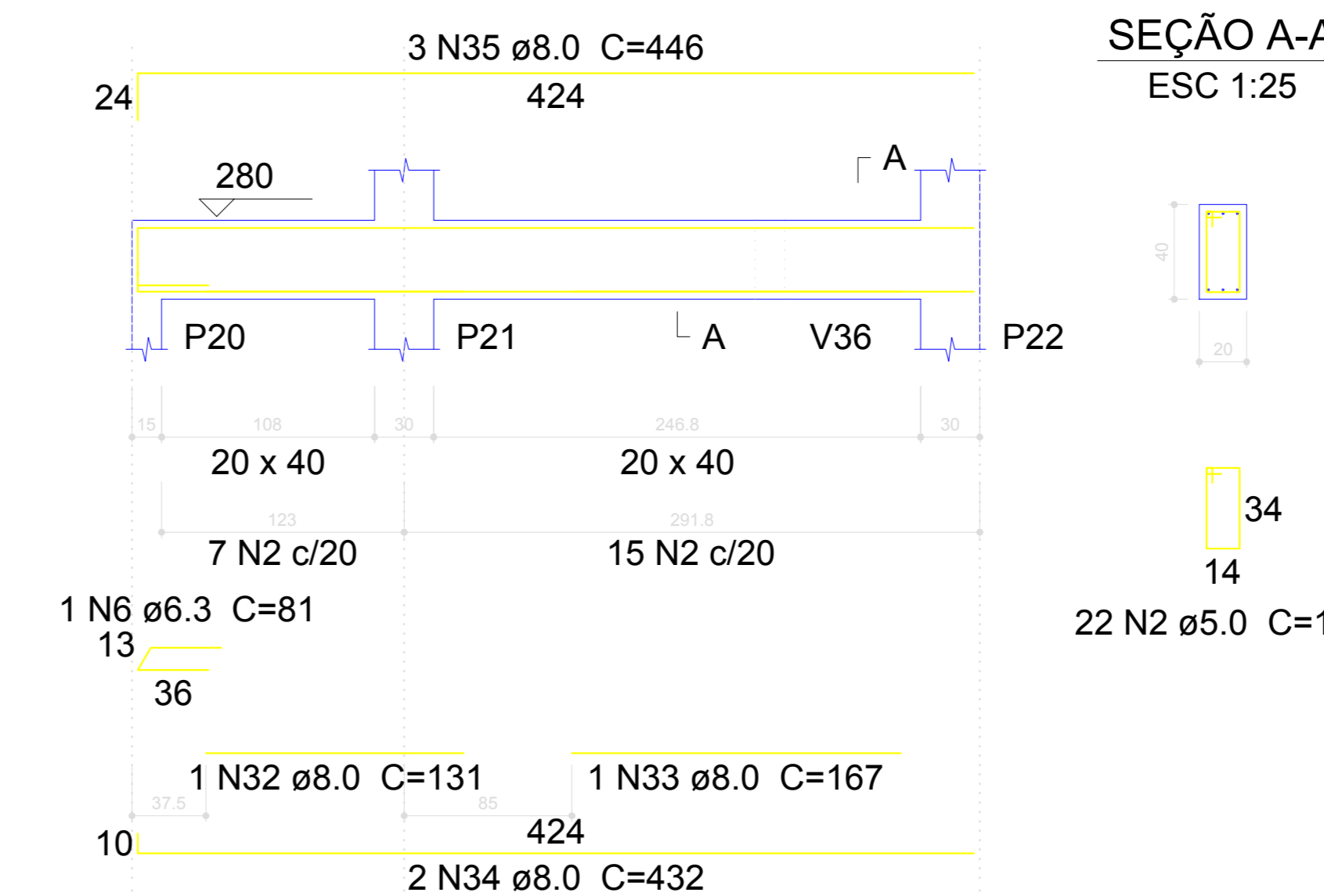
**V40**  
ESC 1:30



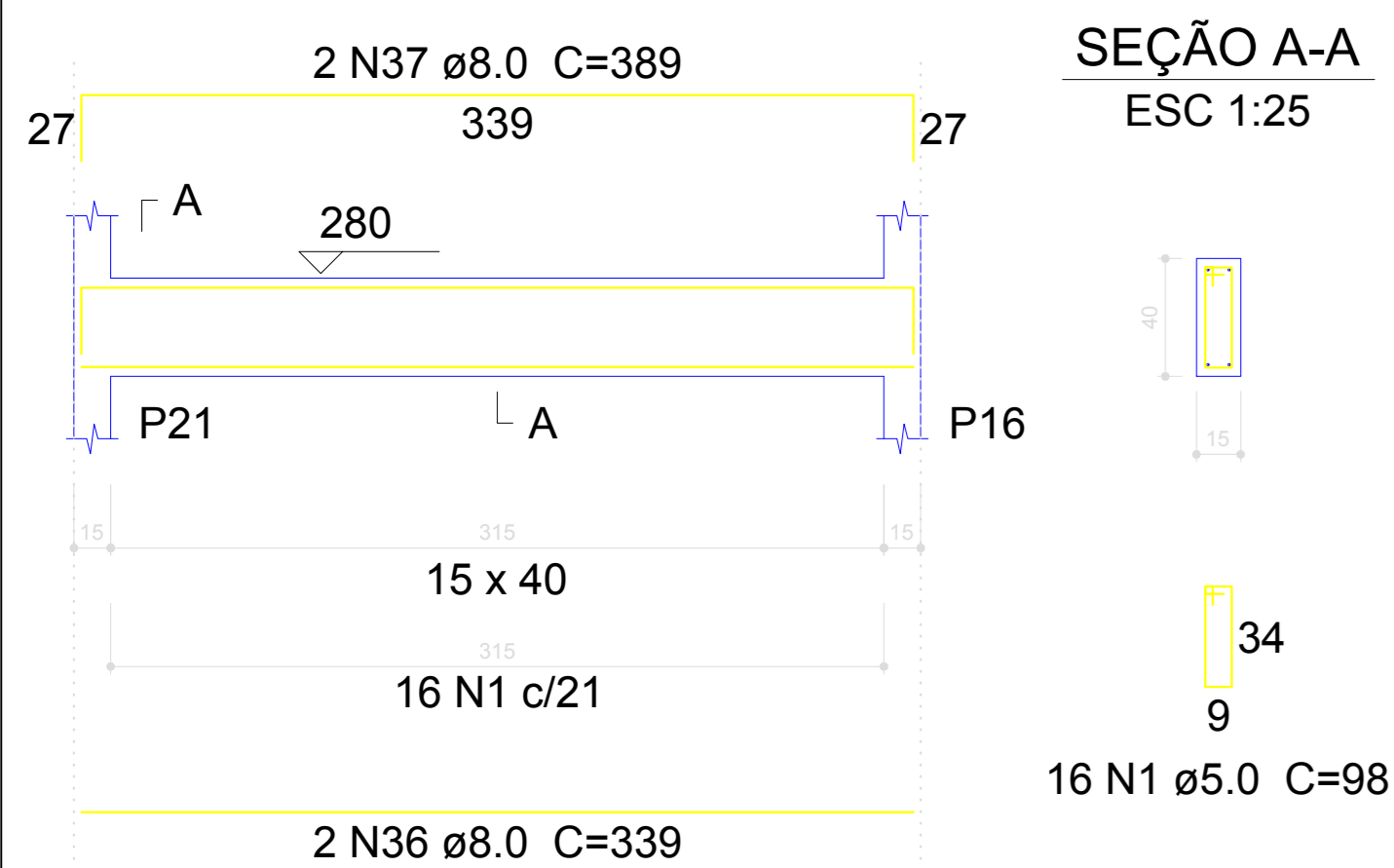
**V33**  
ESC 1:30



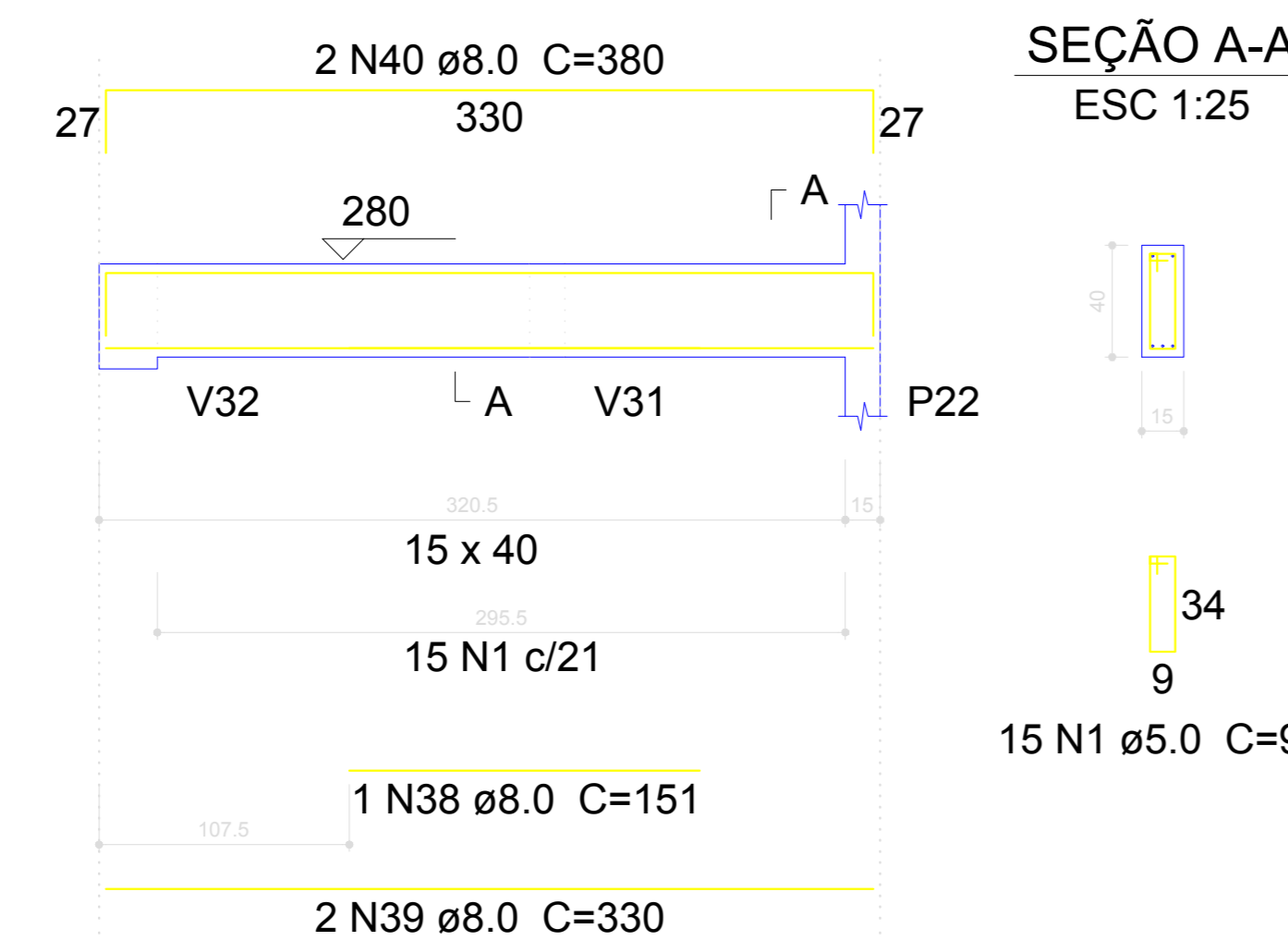
**V30**  
ESC 1:30



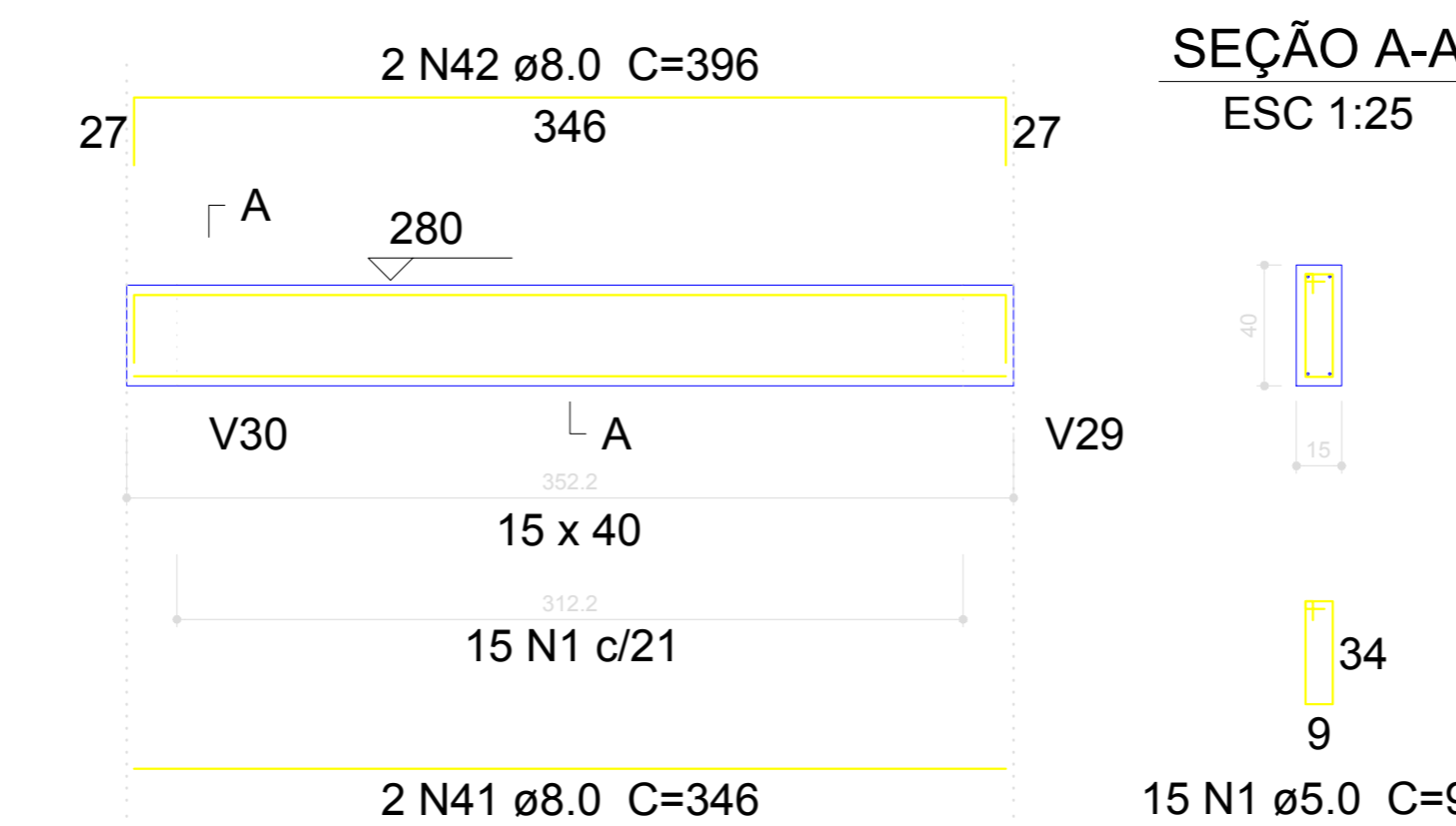
**V35**  
ESC 1:30



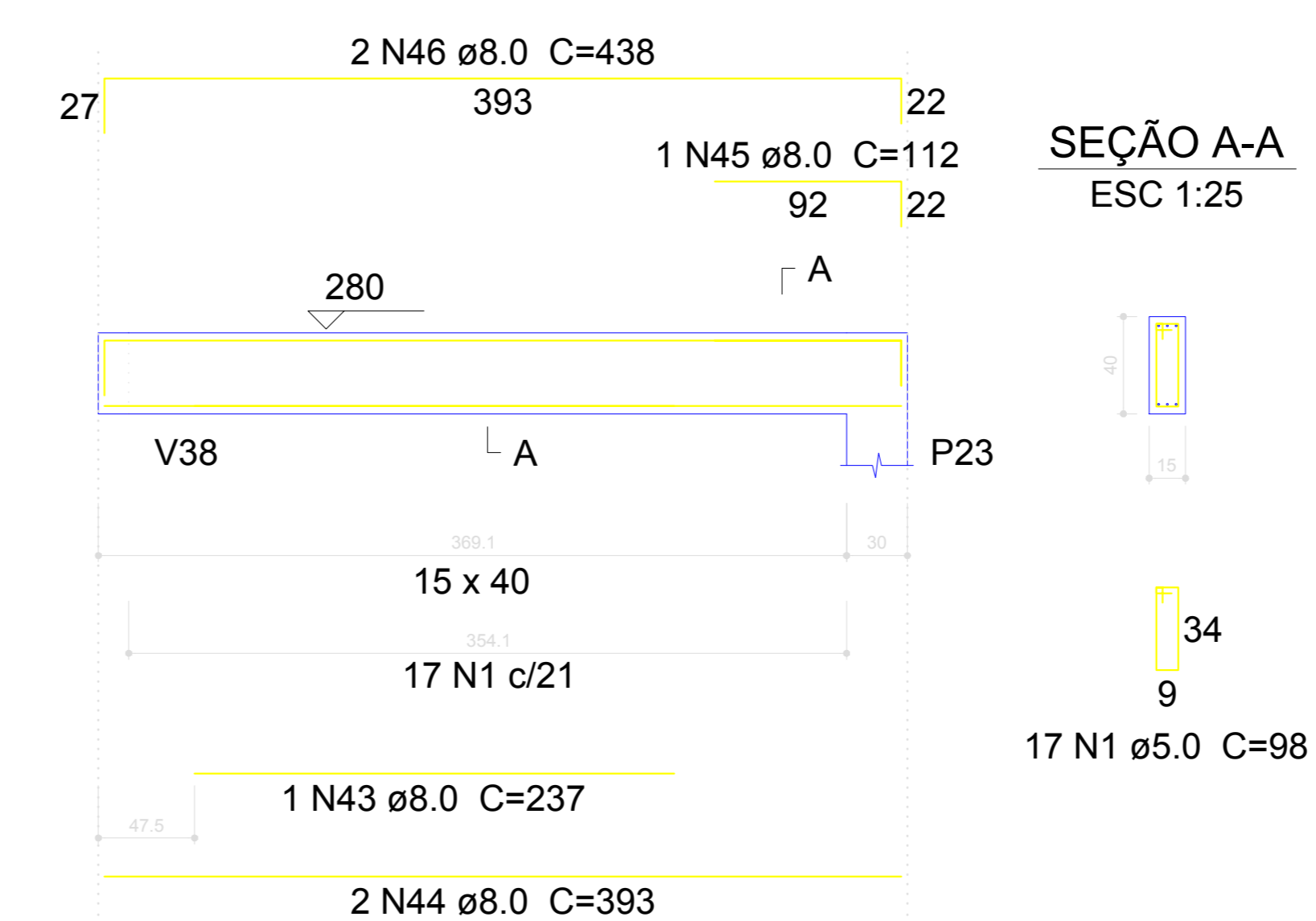
**V38**  
ESC 1:30



**V36**  
ESC 1:30



**V31**  
ESC 1:30



**Resumo do aço**

AÇO	DIAM (mm)	C.TOTAL (m)	PESO + 10 % (kg)
CA50	6.3	47	12.6
	8.0	556.3	241.4
	10.0	14.6	9.9
CA60	5.0	607.2	102.9
<b>PESO TOTAL (kg)</b>			
CA50		263.9	
CA60		102.9	

Volume de concreto (C-25) = 8.05 m³  
Área de forma = 114.43 m²

**Relação do aço**

AÇO	N	DIAM (mm)	QUANT (Barras)	UNIT (cm)	C.TOTAL (cm)
CA60	1	5.0	394	98	38612
	2	5.0	69	108	7452
	3	5.0	3	118	354
	4	5.0	108	128	13824
CA50	5	5.0	2	235	470
	6	6.3	2	81	162
	7	6.3	8	CORR	624
	8	6.3	8	CORR	3912
	9	8.0	2	919	1838
	10	8.0	1	140	140
	11	8.0	4	969	3876
	12	8.0	4	881	3524
	13	8.0	4	340	1360
	14	8.0	2	175	350
	15	8.0	2	1143	2286
	16	8.0	2	206	412
	17	8.0	2	918	1836
	18	8.0	2	377	754
	19	8.0	1	82	82
	20	8.0	1	155	155
	21	8.0	2	1115	2230
	22	8.0	4	198	792
	23	8.0	1	111	111
	24	8.0	1	149	149
	25	8.0	1	108	108
	26	8.0	1	186	186
	27	8.0	2	920	1840
	28	8.0	3	956	2868
	29	8.0	2	1140	2280
	30	8.0	2	325	650
	31	8.0	2	375	750
	32	8.0	1	131	131
	33	8.0	1	167	167
	34	8.0	2	432	864
	35	8.0	3	446	1338
	36	8.0	2	339	678
	37	8.0	2	389	778
	38	8.0	1	151	151
	39	8.0	2	330	660
	40	8.0	2	380	760
	41	8.0	2	346	692
	42	8.0	2	396	792
	43	8.0	1	237	237
	44	8.0	2	393	786
	45	8.0	1	112	112
	46	8.0	2	438	876
	47	8.0	3	87	261
	48	8.0	3	124	372
	49	8.0	1	260	260
	50	8.0	2	927	1854
	51	8.0	1	195	195
	52	8.0	4	505	2020
	53	8.0	4	555	2220
	54	8.0	2	221	442
	55	8.0	2	82	164
	56	8.0	2	447	894
	57	8.0	1	275	275
	58	8.0	2	424	848
	59	8.0	4	130	520
	60	8.0	2	215	430
	61	8.0	2	190	380
	62	8.0	2	283	566
	63	8.0	2	1020	2040
	64	8.0	1	165	165
	65	8.0	1	660	660
	66	8.0	1	109	109
	67	8.0	1	149	149
	68	8.0	3	1067	3201
	69	10.0	3	485	1455

Luiz Carlos Schmulder  
PREFEITO

Antony N. Fernandes  
RESPONSÁVEL TÉCNICO

**PREFEITURA MUNICIPAL DE BOCAINA DO SUL**

Reforma e Ampliação Creche Raulino Felipe dos Santos

Projeto estrutural, detalhamento das vigas nível cobertura 1/2

Prefeito  
Luiz Carlos Schmulder

Responsável técnico  
Eng. Antony N. Fernandes

escalas:  
Indicadas

CREA n°  
136779-8

Prancha n°  
02/04