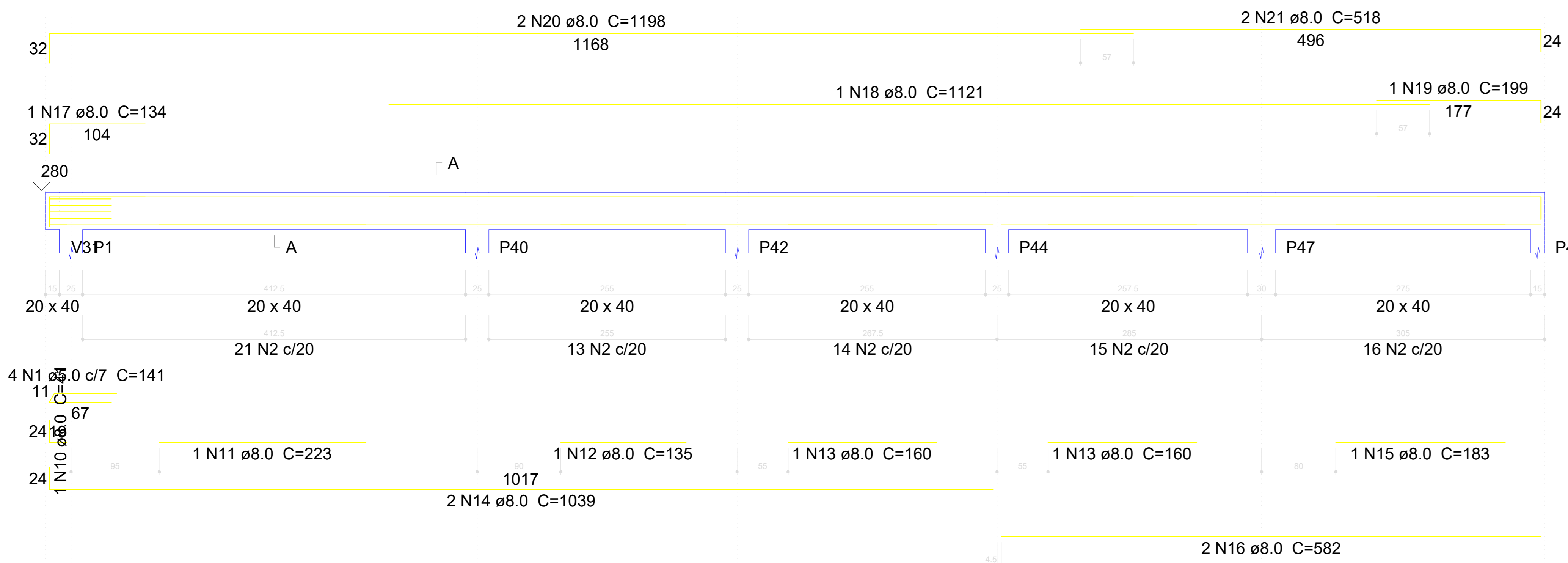


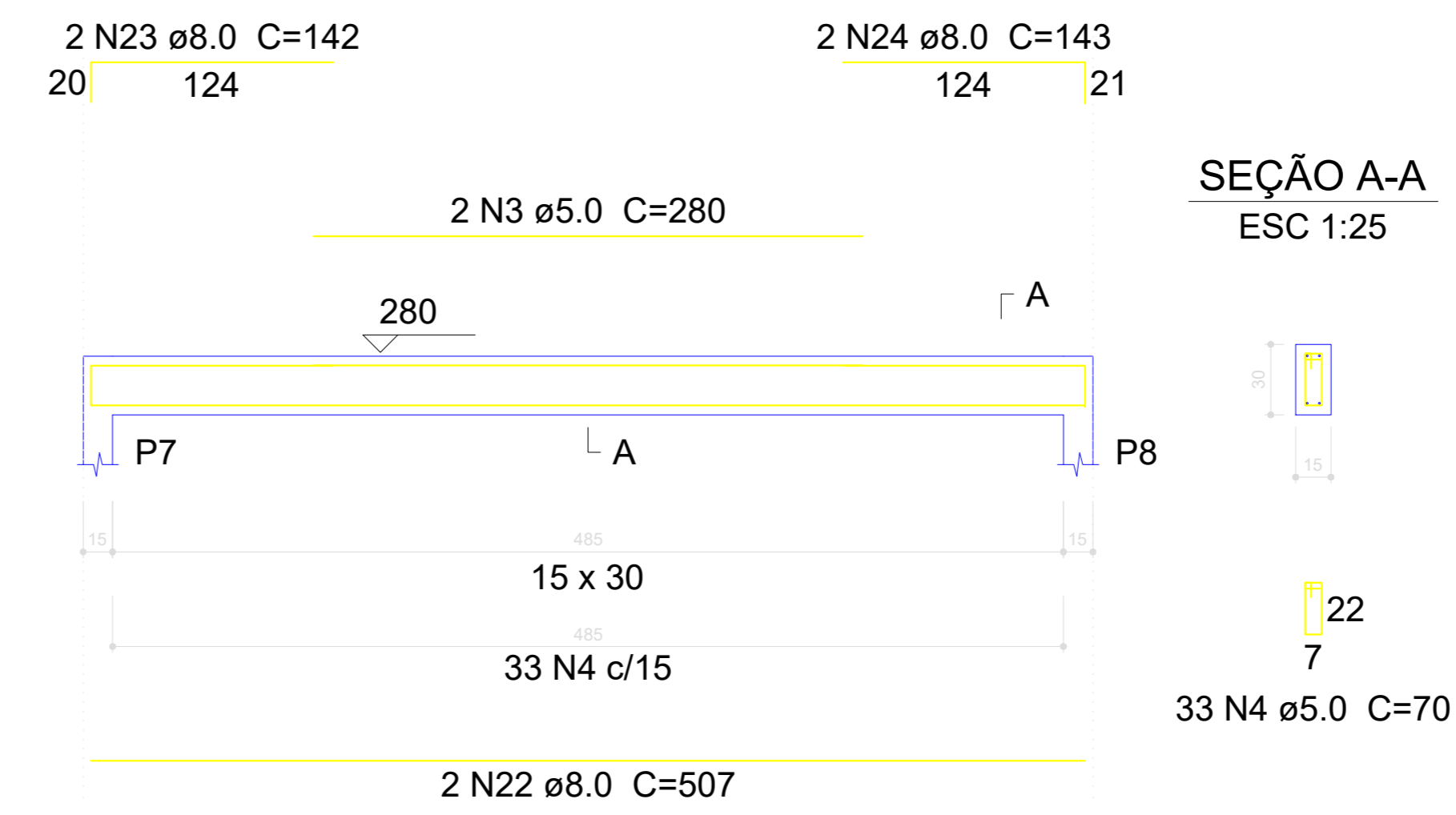
V24

ESC 1:30



V25

ESC 1:30

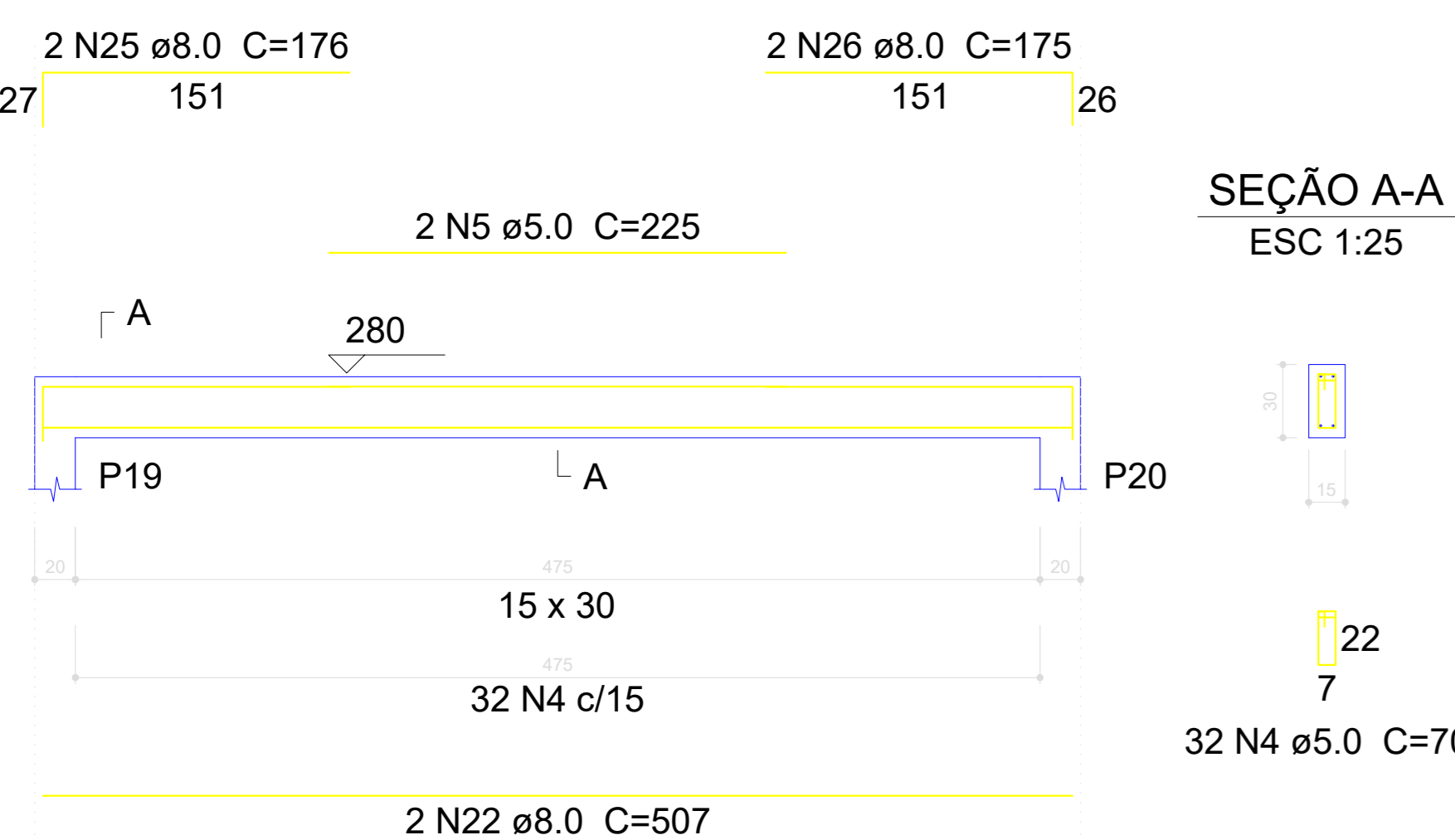


Relação do aço

AÇO	N	DIAM (mm)	QUANT (Barras)	UNIT (cm)	C.TOTAL (cm)
CA60	1	5.0	4	141	564
CA60	2	5.0	79	100	7900
CA60	3	5.0	2	280	560
CA60	4	5.0	687	70	48090
CA60	5	5.0	2	225	450
CA60	6	5.0	2	283	566
CA60	7	5.0	2	300	600
CA60	8	5.0	2	303	606
CA60	9	5.0	2	250	500
CA50	10	8.0	1	41	41
CA50	11	8.0	1	223	223
CA50	12	8.0	1	135	135
CA50	13	8.0	3	160	480
CA50	14	8.0	2	1039	2078
CA50	15	8.0	1	183	183
CA50	16	8.0	2	582	1164
CA50	17	8.0	1	134	134
CA50	18	8.0	1	1121	1121
CA50	19	8.0	1	199	199
CA50	20	8.0	2	1198	2396
CA50	21	8.0	2	518	1036
CA50	22	8.0	6	507	3042
CA50	23	8.0	2	142	284
CA50	24	8.0	2	143	286
CA50	25	8.0	2	176	352
CA50	26	8.0	2	175	350
CA50	27	8.0	2	543	1086
CA50	28	8.0	2	912	1824
CA50	29	8.0	2	502	1004
CA50	30	8.0	2	184	368
CA50	31	8.0	2	1069	2138
CA50	32	8.0	2	1034	2068
CA50	33	8.0	1	122	122
CA50	34	8.0	2	182	364
CA50	35	8.0	2	1200	2400
CA50	36	8.0	2	537	1074
CA50	37	8.0	2	265	530
CA50	38	8.0	2	301	602
CA50	39	8.0	2	852	1704
CA50	40	8.0	2	677	1354
CA50	41	8.0	2	1198	2396
CA50	42	8.0	2	431	862
CA50	43	8.0	2	140	280
CA50	44	8.0	2	160	320
CA50	45	8.0	2	220	440
CA50	46	8.0	8	248	1984
CA50	47	8.0	2	682	1364
CA50	48	8.0	2	607	1214
CA50	49	8.0	1	170	170
CA50	50	8.0	2	887	1774
CA50	51	8.0	1	123	123
CA50	52	8.0	2	183	366
CA50	53	8.0	4	212	848
CA50	54	8.0	2	228	456
CA50	55	8.0	2	638	1276
CA50	56	8.0	2	666	1332
CA50	57	8.0	2	427	854
CA50	58	8.0	2	463	926
CA50	59	8.0	2	312	624
CA50	60	8.0	4	348	1392
CA50	61	8.0	2	467	934
CA50	62	8.0	2	82	164
CA50	63	8.0	2	192	384
CA50	64	8.0	2	280	560
CA50	65	8.0	2	308	616
CA50	66	8.0	2	320	640

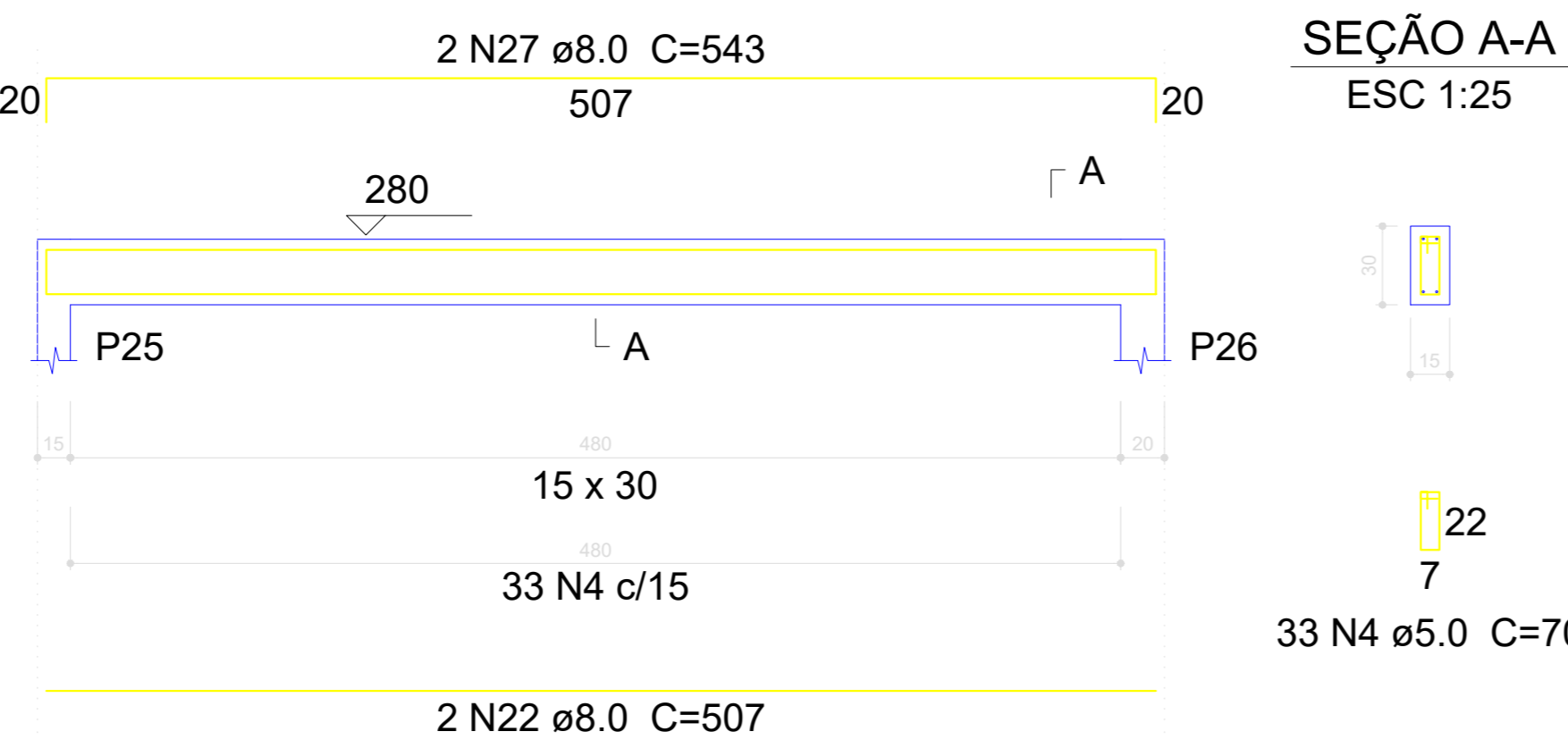
V26

ESC 1:30



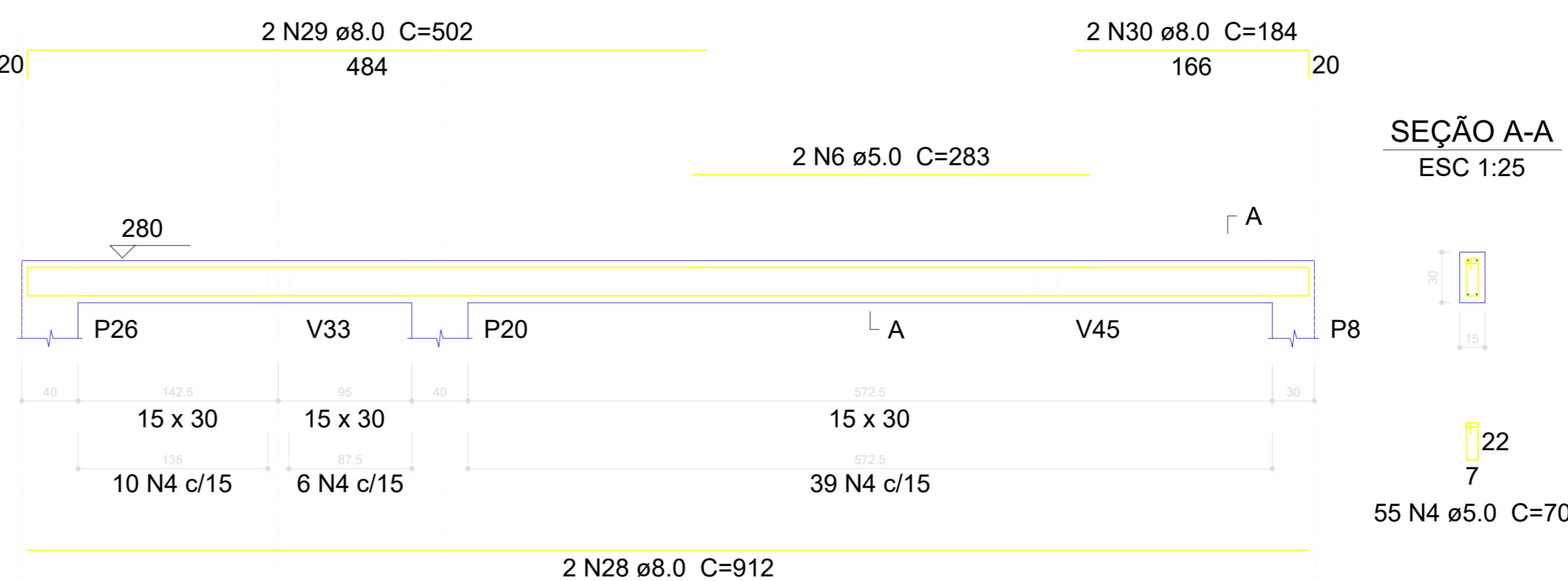
V27

ESC 1:30



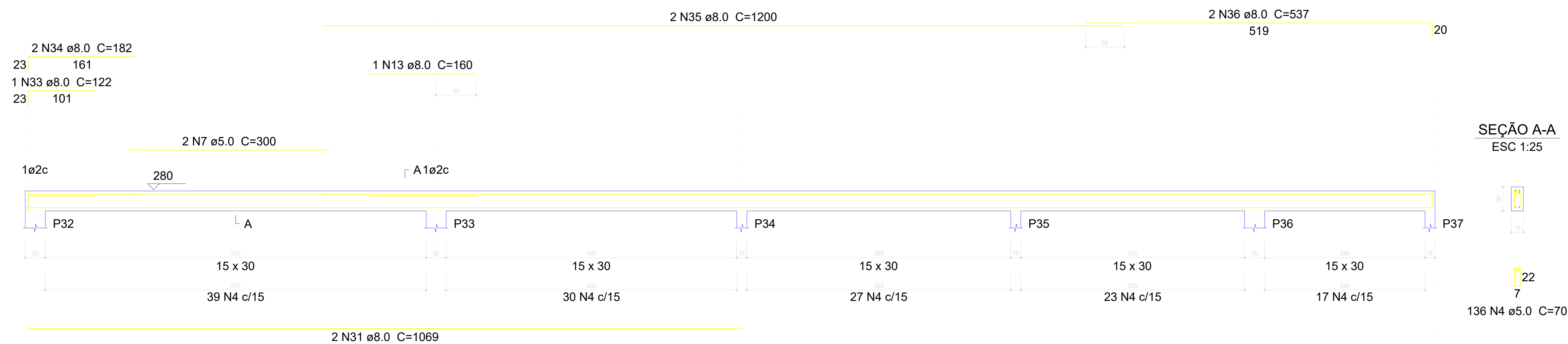
V30

ESC 1:30



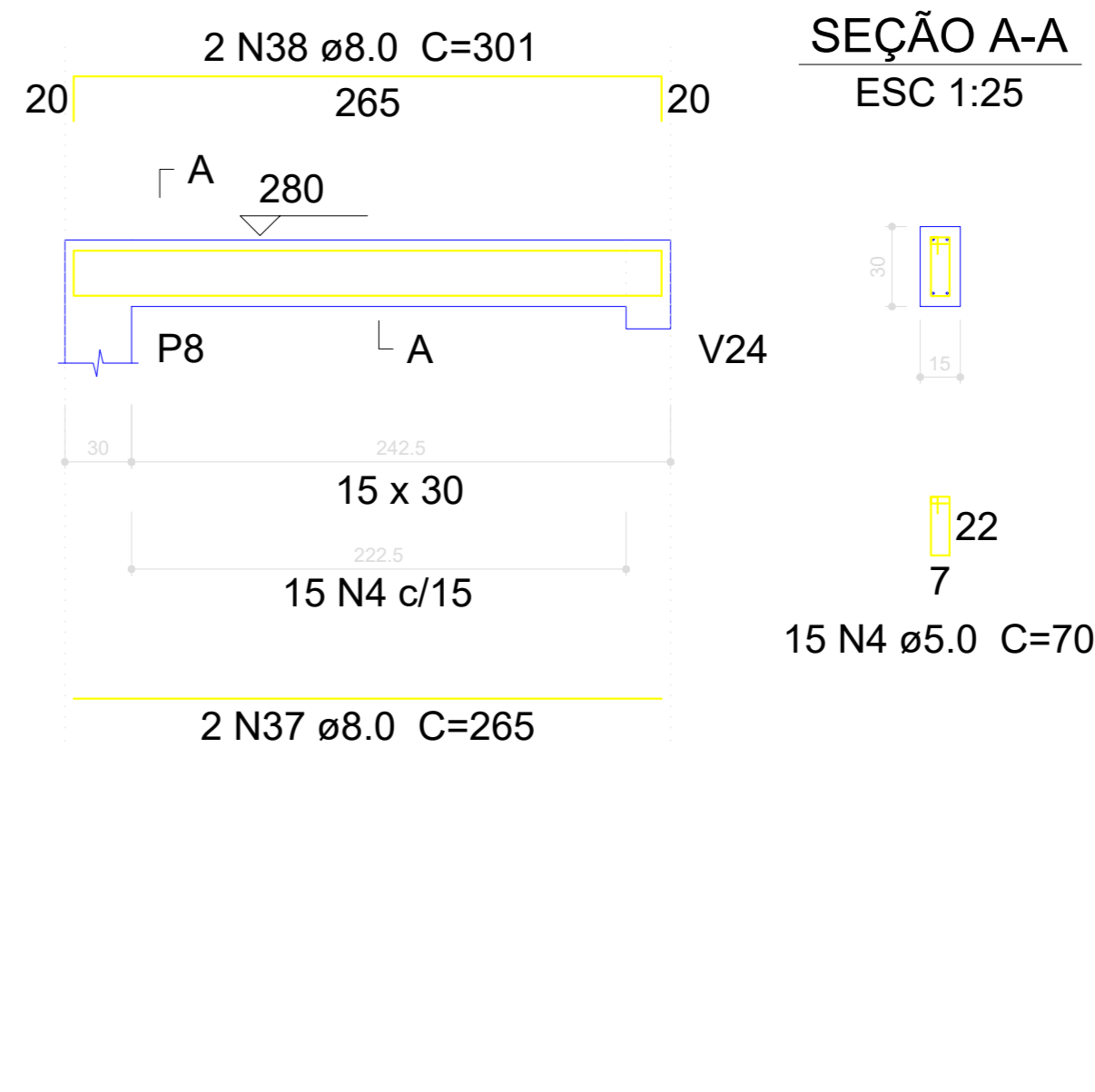
V28

ESC 1:30



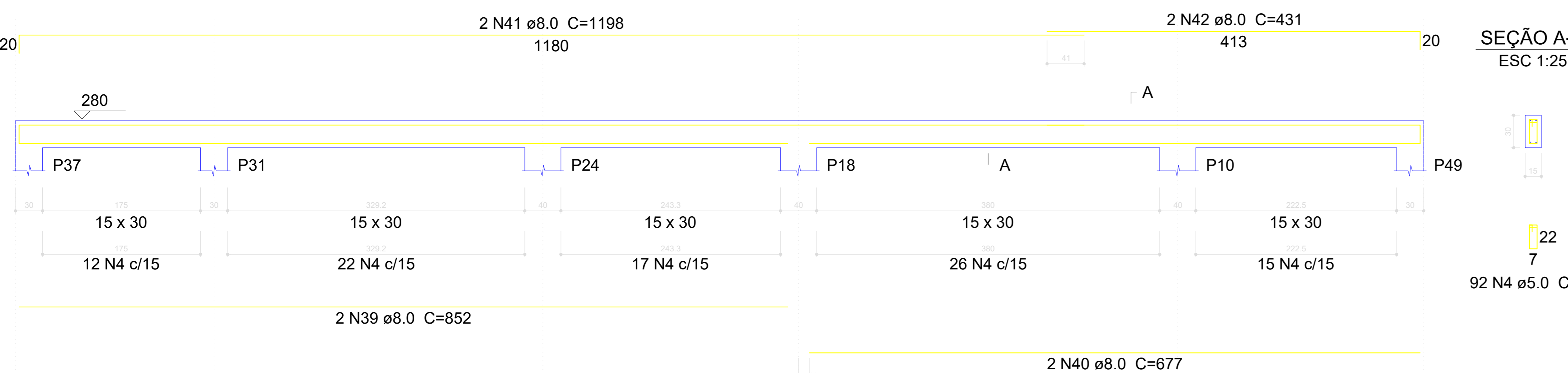
V31

ESC 1:30



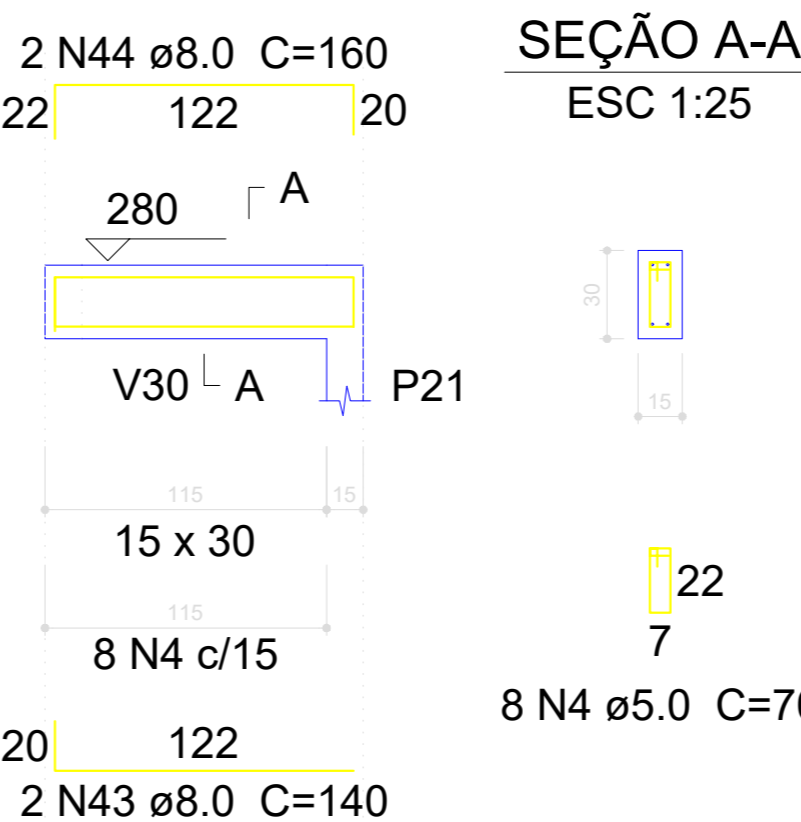
V32

ESC 1:30



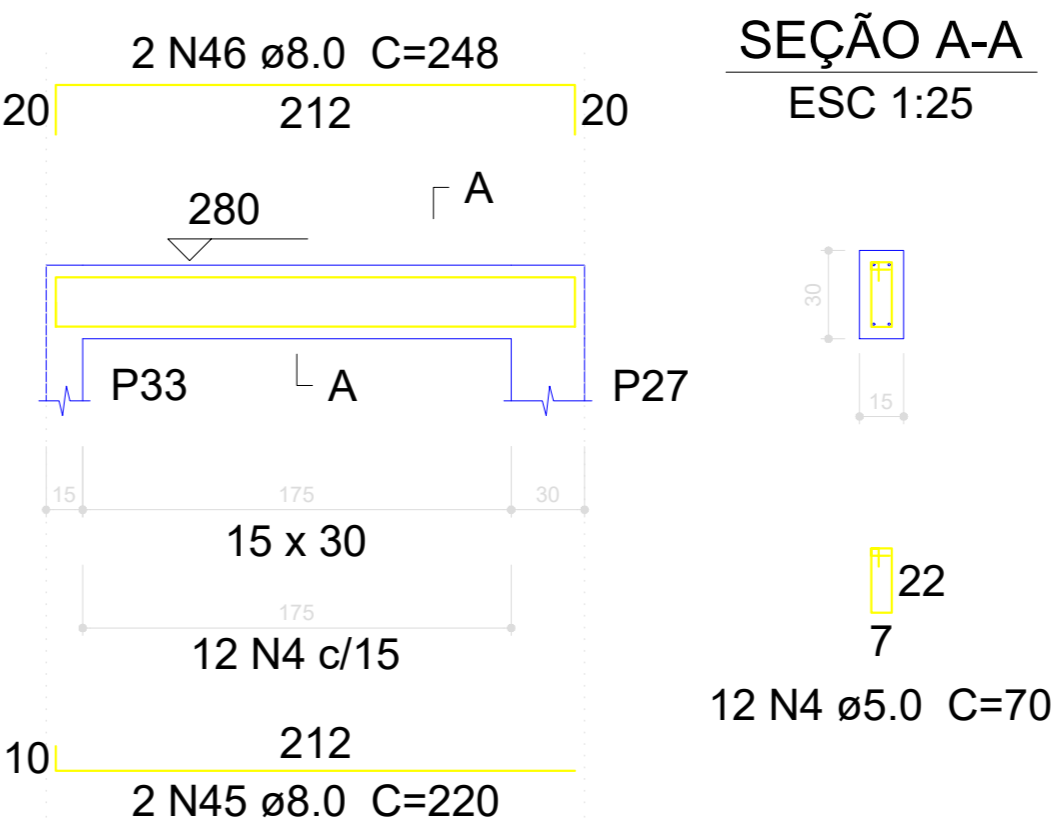
V33

ESC 1:30



V34

ESC 1:30



Resumo do aço

AÇO	DIAM (mm)	C.TOTAL (m)	PESO + 10% (kg)
CA50	8.0	524.5	227.6
CA60	5.0	598.4	101.5
PESO TOTAL (kg)			
CA50	227.6	Volume de concreto (C-25) = 6.33 m³	
CA60	101.5	Área de forma = 100.19 m²	

Luiz Carlos Schmulder
PREFEITO

Antony N. Fernandes
RESPONSÁVEL TÉCNICO

PREFEITURA MUNICIPAL DE BOCAINA DO SUL

Reforma e Ampliação Creche Raulino Felipe dos Santos

Projeto estrutural, detalhamento das vigas nível cobertura 1/2

Prefeito: Luiz Carlos Schmulder
Responsável técnico: Eng. Antony N. Fernandes

escalas: Indicadas
CREA nº 136779-8
Prancha nº 02/03