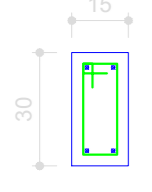


P1

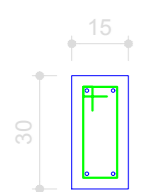
COBERTURA - L2

ESC 1:20



28 N1 ø5.0 C=78

TERREO - L1
ESC 1:20



3 N1 ø5.0 C=78

2 VAR 38
4 N5 ø10.0 C=VAR

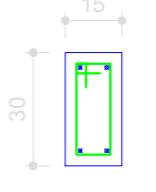
280



P2

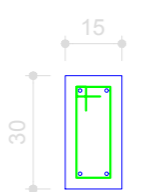
COBERTURA - L2

ESC 1:20



28 N1 ø5.0 C=78

TERREO - L1
ESC 1:20



3 N1 ø5.0 C=78

2 VAR 38
4 N5 ø10.0 C=VAR

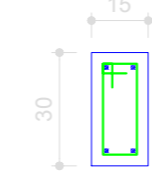
280



P3

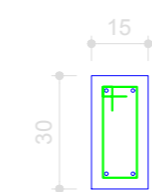
COBERTURA - L2

ESC 1:20



28 N1 ø5.0 C=78

TERREO - L1
ESC 1:20



3 N1 ø5.0 C=78

2 VAR 38
4 N5 ø10.0 C=VAR

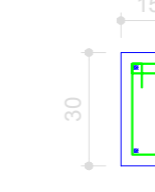
280



P4

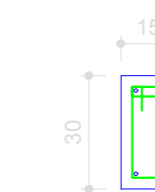
COBERTURA - L2

ESC 1:20



28 N1 ø5.0 C=78

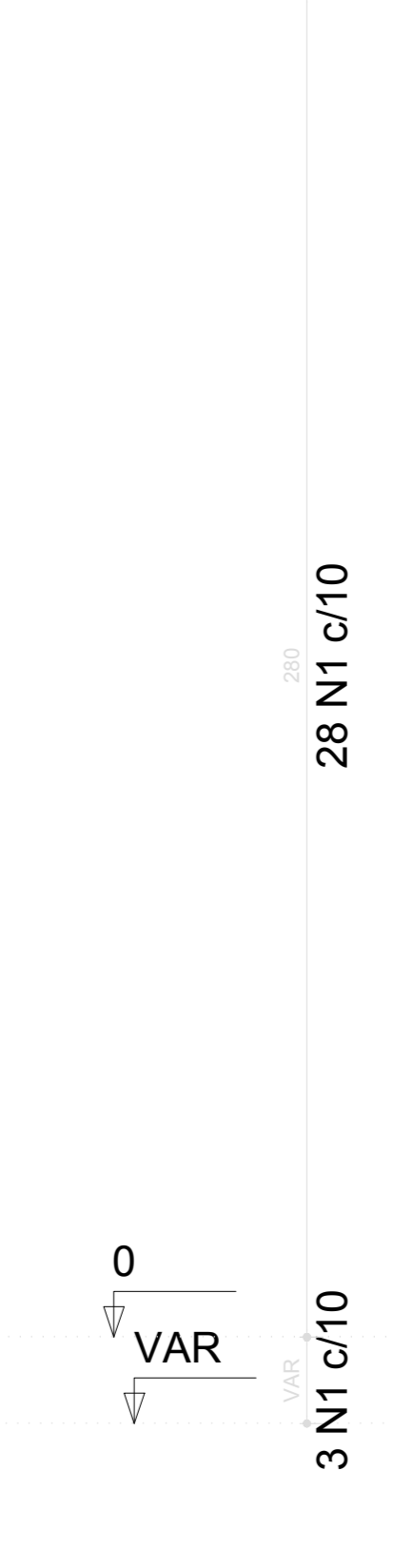
TERREO - L1
ESC 1:20



3 N1 ø5.0 C=78

2 VAR 38
4 N5 ø10.0 C=VAR

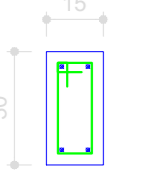
280



P5

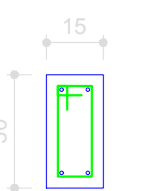
COBERTURA - L2

ESC 1:20



28 N1 ø5.0 C=78

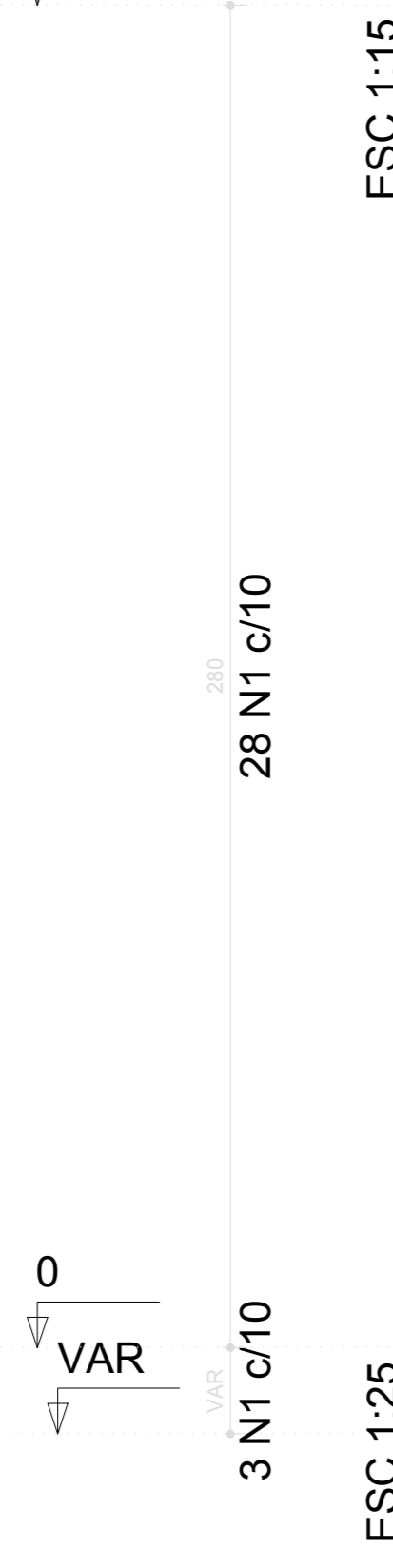
TERREO - L1
ESC 1:20



3 N1 ø5.0 C=78

2 VAR 38
4 N5 ø10.0 C=VAR

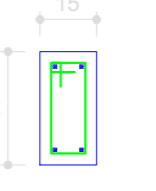
280



P6

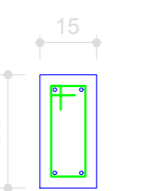
COBERTURA - L2

ESC 1:20



28 N1 ø5.0 C=78

TERREO - L1
ESC 1:20



3 N1 ø5.0 C=78

2 VAR 38
4 N5 ø10.0 C=VAR

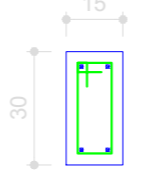
280



P7

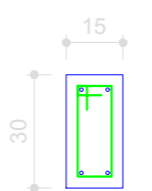
COBERTURA - L2

ESC 1:20



28 N1 ø5.0 C=78

TERREO - L1
ESC 1:20



3 N1 ø5.0 C=78

2 VAR 38
4 N5 ø10.0 C=VAR

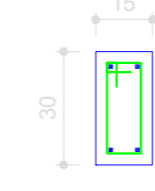
280



P8

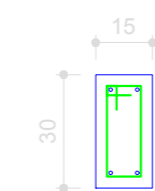
COBERTURA - L2

ESC 1:20



28 N1 ø5.0 C=78

TERREO - L1
ESC 1:20



3 N1 ø5.0 C=78

2 VAR 38
4 N5 ø10.0 C=VAR

280



Relação do aço

| | | |
|-----|-----|-----|
| P1 | P2 | P3 |
| P4 | P5 | P6 |
| P7 | P8 | P9 |
| P10 | P11 | P12 |
| P13 | P14 | P15 |
| P16 | P17 | P18 |
| P19 | P20 | P21 |
| P22 | P23 | P24 |
| P25 | P26 | |

| AÇO | N | DIAM (mm) | QUANT (Barras) | UNIT (cm) | C.TOTAL (cm) |
|------|----|-----------|----------------|-----------|--------------|
| CA60 | 1 | 5.0 | 771 | 78 | 60138 |
| | 2 | 5.0 | 53 | 24 | 1272 |
| | 3 | 5.0 | 33 | 88 | 2904 |
| | 4 | 5.0 | 62 | 88 | 5456 |
| CA50 | 5 | 10.0 | 78 | VAR | VAR |
| | 6 | 10.0 | 94 | 277 | 26038 |
| | 7 | 10.0 | 32 | VAR | VAR |
| | 8 | 10.0 | 4 | 75 | 300 |
| | 9 | 10.0 | 16 | 318 | 5088 |
| | 10 | 10.0 | 20 | 107 | 2140 |

Resumo do aço

| AÇO | DIAM (mm) | C.TOTAL (m) | PESO + 10% (kg) |
|-----------------|-----------|-------------|-----------------|
| CA50 | 10.0 | 435.1 | 295.1 |
| CA60 | 5.0 | 697.7 | 118.3 |
| PESO TOTAL (kg) | | | |
| CA50 | | 295.1 | |
| CA60 | | 118.3 | |

Volume de concreto (C-25) = 4 m³
Área de forma = 78.53 m²

Luiz Carlos Schmulder
PREFEITO

Antony N. Fernandes
RESPONSÁVEL TÉCNICO



PREFEITURA MUNICIPAL DE BOCAINA DO SUL

Reforma e Ampliação Creche Raulino Felipe dos Santos

Projeto estrutural, detalhamento dos pilares em prumada 1/3



| | |
|---|-----------------------|
| Prefeito Luiz Carlos Schmulder | escalas: Indicadas |
| Responsável técnico Eng. Antony N. Fernandes | Prancha nº 03/08 |

CREA nº
136779-8