

Relação do aço

V1	V2	V3
V4	V5	V6
V7	V8	V9
V10	V11	V12
V13	V14	V15
V16	V17	V18
V19	V20	V21
V22	V23	

AÇO	N	DIAM (mm)	QUANT (Barras)	UNIT (cm)	C.TOTAL (cm)
CA60	1	5.0	547	98	53606
	2	5.0	33	128	4224
CA50	3	6.3	4	76	304
	4	8.0	2	935	1870
	5	8.0	2	969	1938
	6	8.0	2	918	1836
	7	8.0	2	377	754
	8	8.0	2	170	340
	9	8.0	2	1122	2244
	10	8.0	2	181	362
	11	8.0	6	881	5286
	12	8.0	6	340	2040
	13	8.0	2	1115	2230
	14	8.0	2	173	346
	15	8.0	2	1140	2280
	16	8.0	2	178	356
	17	8.0	2	1143	2286
	18	8.0	2	180	360
	19	8.0	2	920	1840
	20	8.0	1	90	90
	21	8.0	2	937	1874
	22	8.0	2	333	666
	23	8.0	2	350	700
	24	8.0	2	432	864
	25	8.0	2	456	912
	26	8.0	4	339	1356
	27	8.0	4	389	1556
	28	8.0	2	683	1366
	29	8.0	2	708	1416
	30	8.0	2	325	650
	31	8.0	2	375	750
	32	8.0	2	202	404
	33	8.0	2	251	502
	34	8.0	2	401	802
	35	8.0	1	112	112
	36	8.0	2	418	836
	37	8.0	2	239	478
	38	8.0	2	253	506
	39	8.0	2	440	880
	40	8.0	2	474	948
	41	8.0	2	167	334
	42	8.0	2	209	418
	43	8.0	7	355	2485
	44	8.0	2	363	726
	45	8.0	1	107	107
	46	8.0	2	380	760
	47	8.0	2	280	560
	48	8.0	2	330	660
	49	8.0	2	232	464
	50	8.0	2	281	562
	51	8.0	2	405	810
	52	8.0	2	248	496
	53	8.0	2	507	1014
	54	8.0	2	128	256
	55	8.0	2	148	296
	56	8.0	2	553	1106

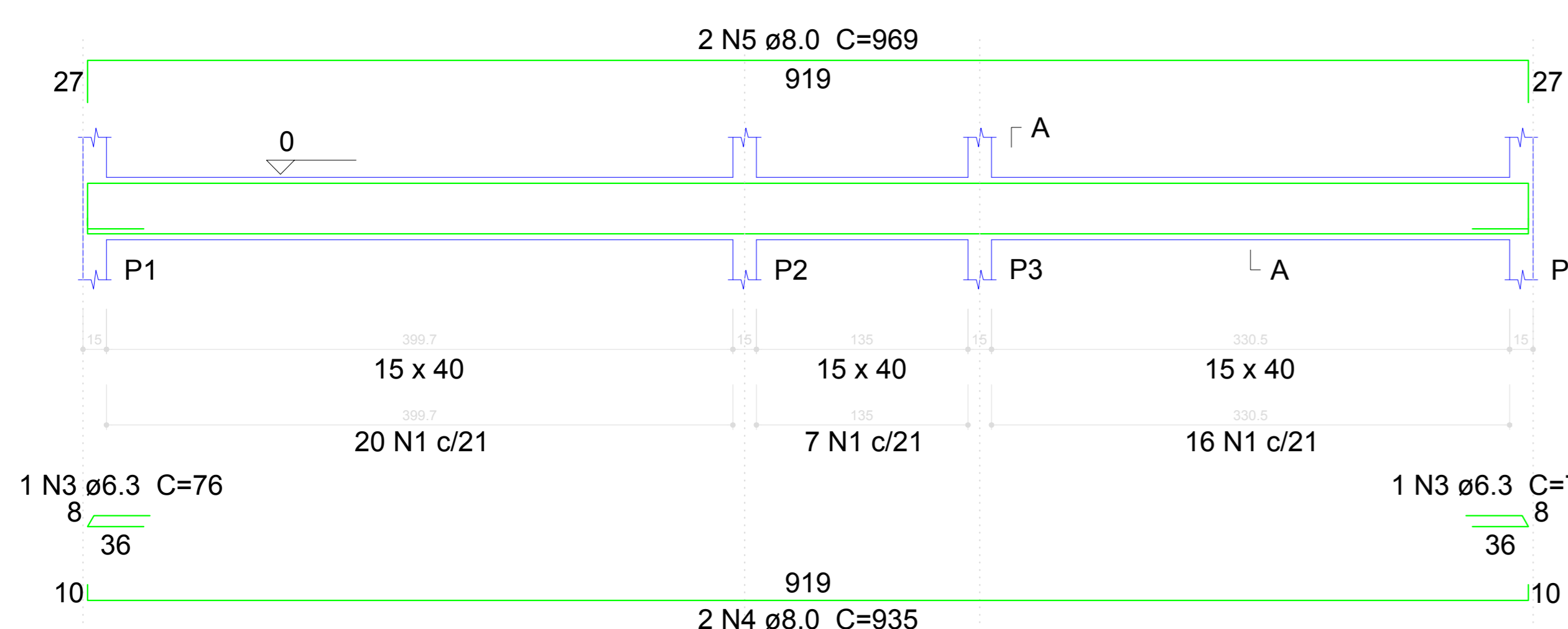
Resumo do aço

AÇO	DIAM (mm)	C.TOTAL (m)	PESO + 10 % (kg)
CA50	6.3	3.1	0.8
	8.0	550.9	239.1
CA60	5.0	578.3	98
PESO TOTAL (kg)			
CA50		239.9	
CA60		98	

Volume de concreto (C-25) = 7.93 m³
Área de forma = 122.39 m²

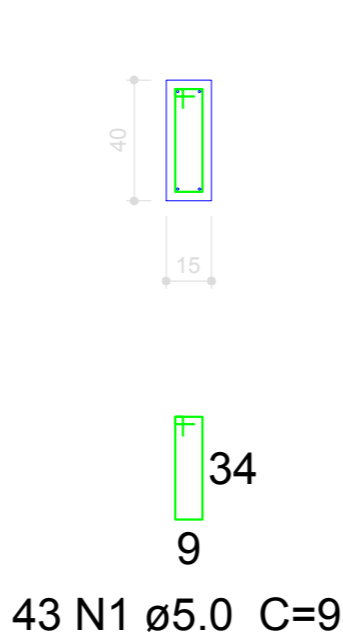
V1

ESC 1:30



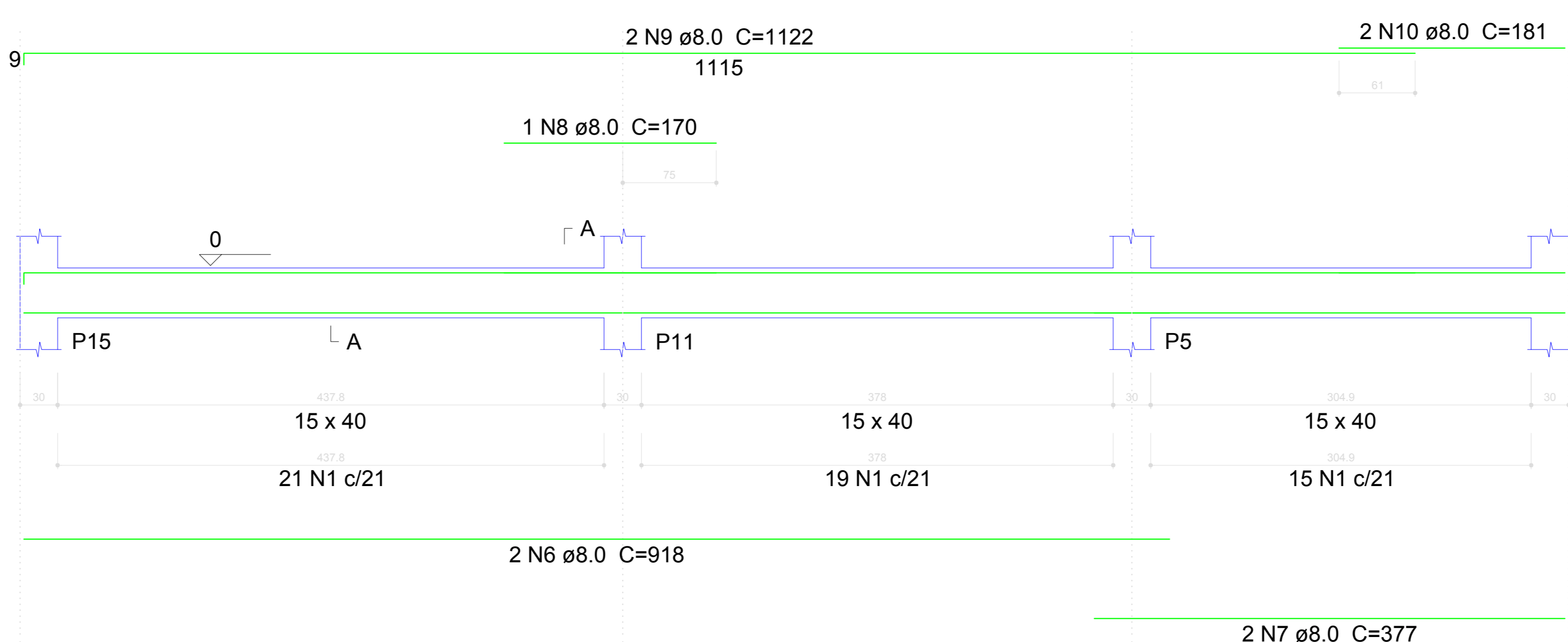
SEÇÃO A-A

ESC 1:25



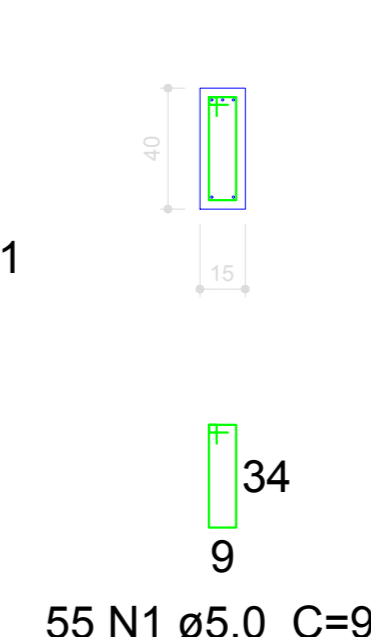
V14

ESC 1:30



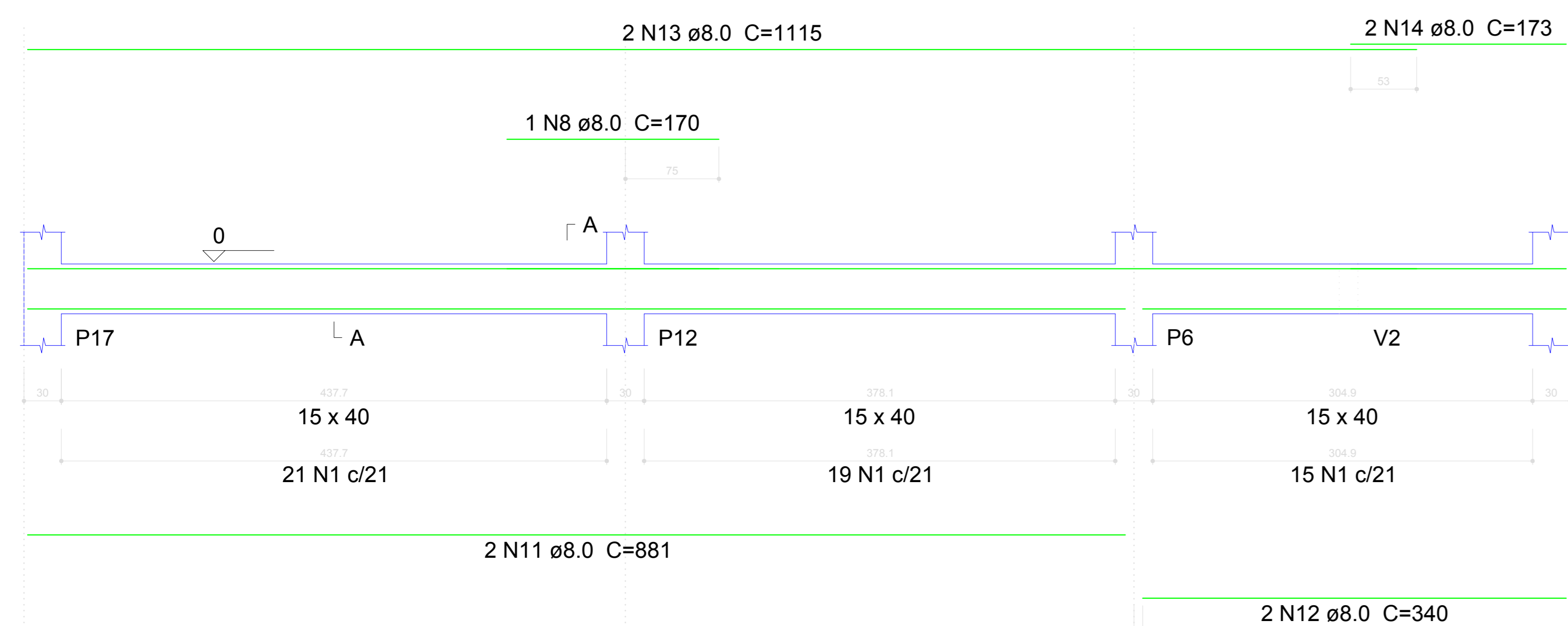
SEÇÃO A-A

ESC 1:25



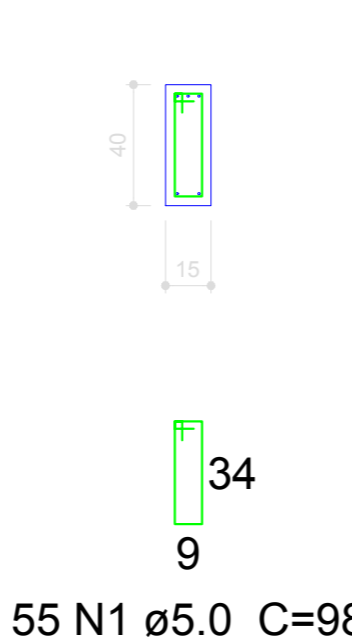
V18

ESC 1:30



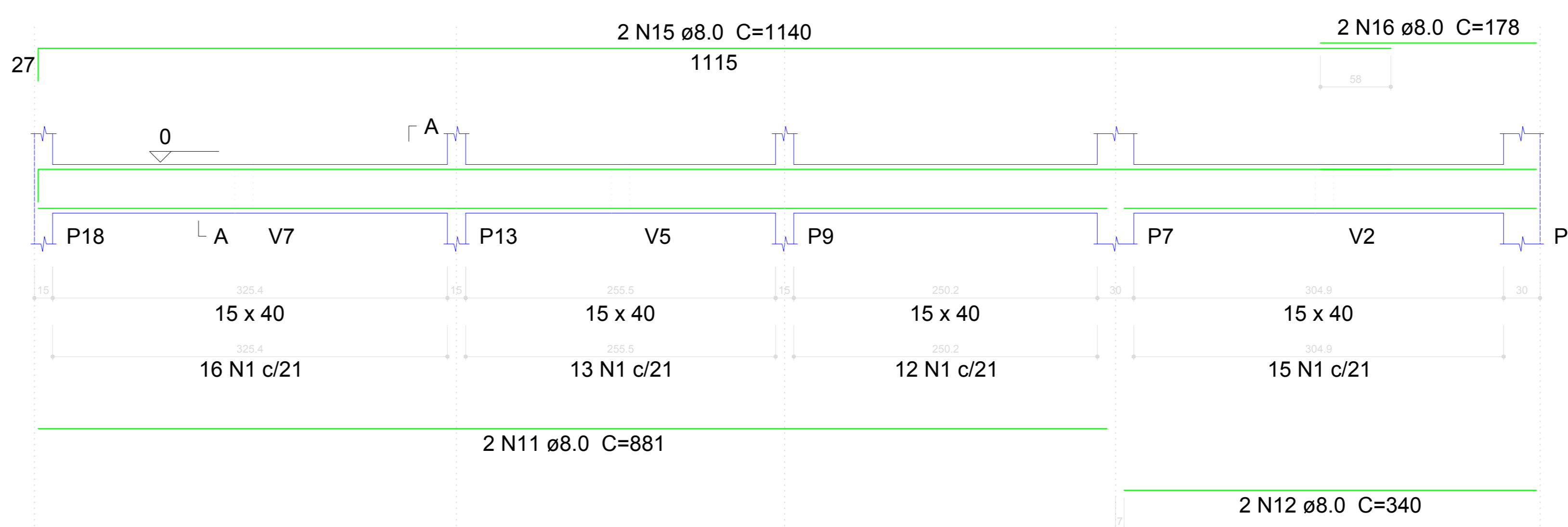
SEÇÃO A-A

ESC 1:25



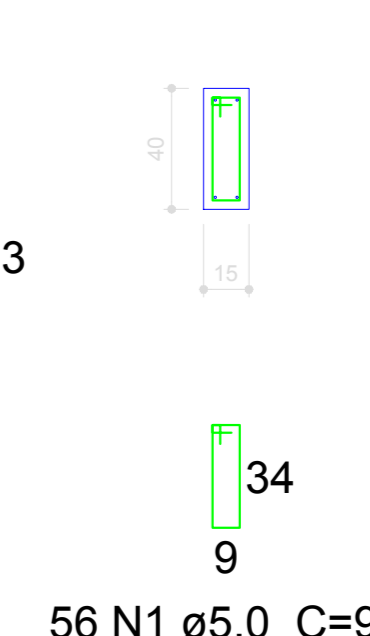
V19

ESC 1:30



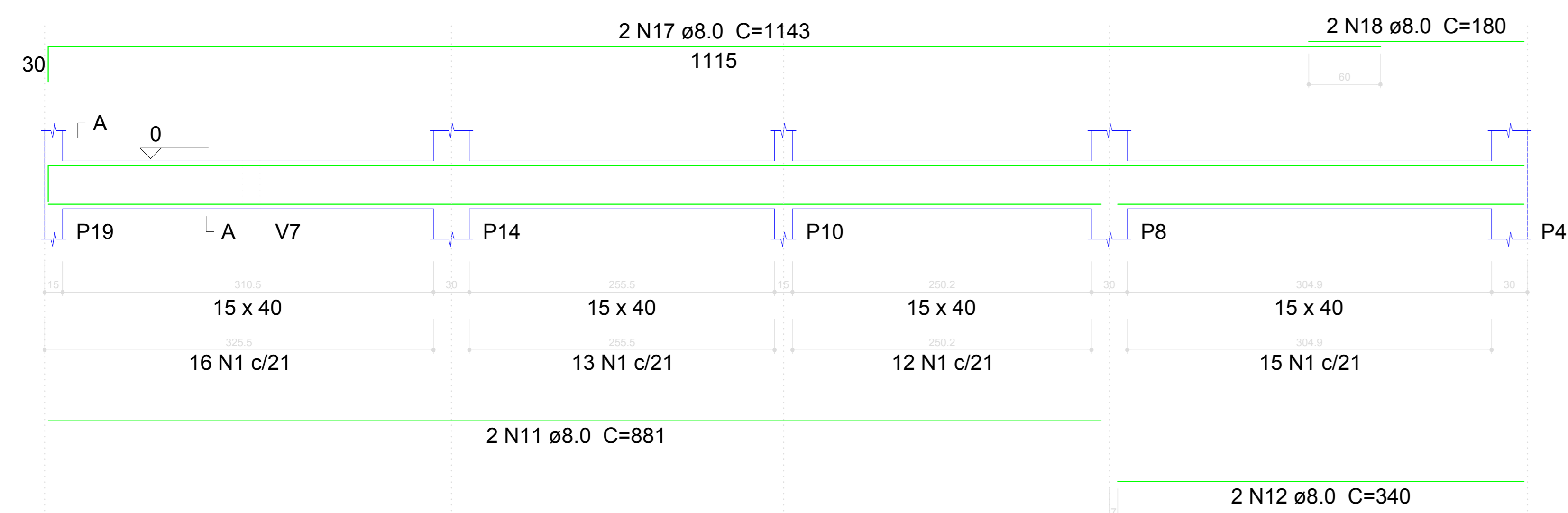
SEÇÃO A-A

ESC 1:25



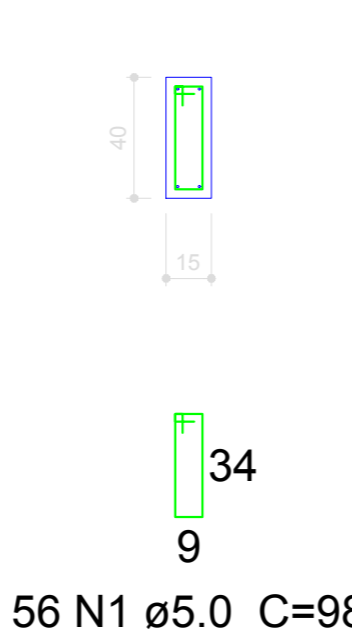
V22

ESC 1:30



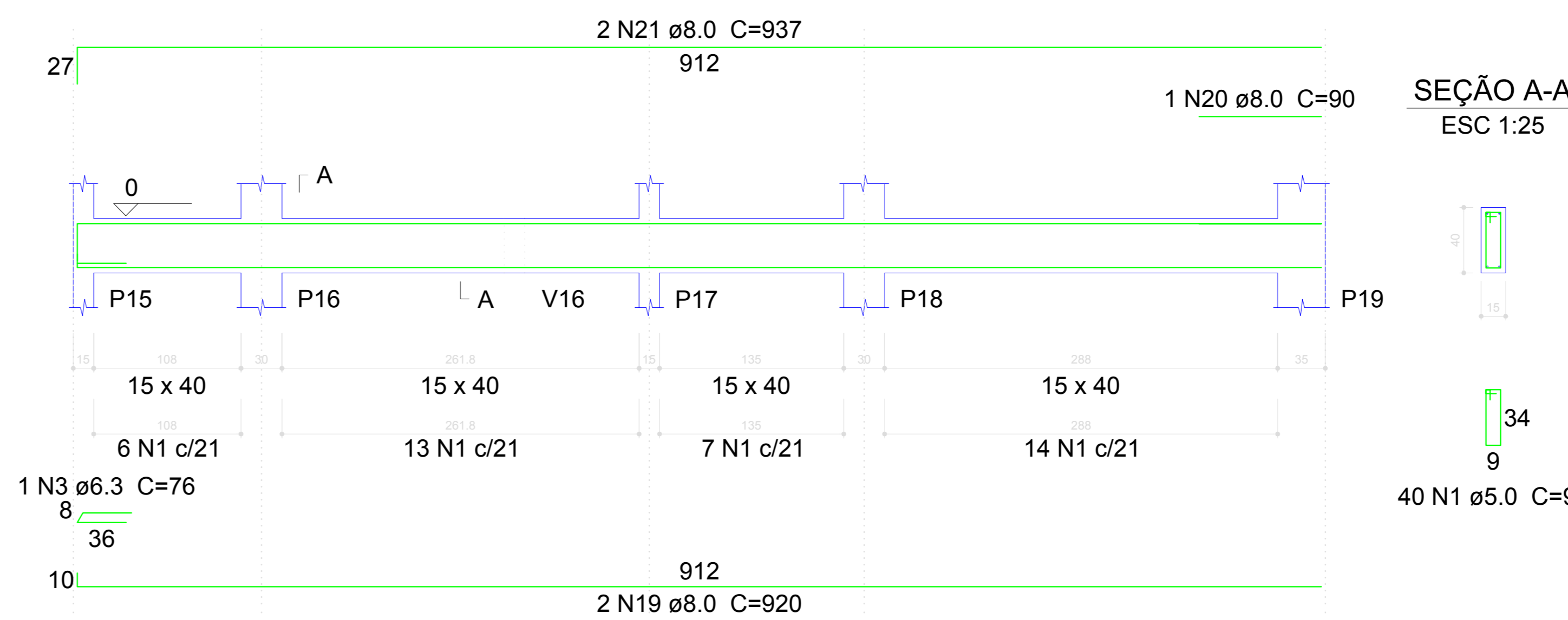
SEÇÃO A-A

ESC 1:25



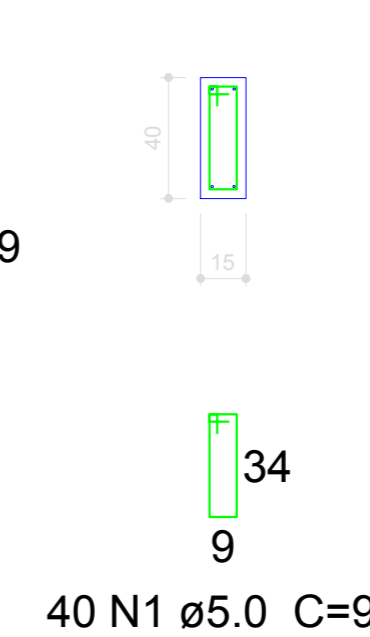
V8

ESC 1:30



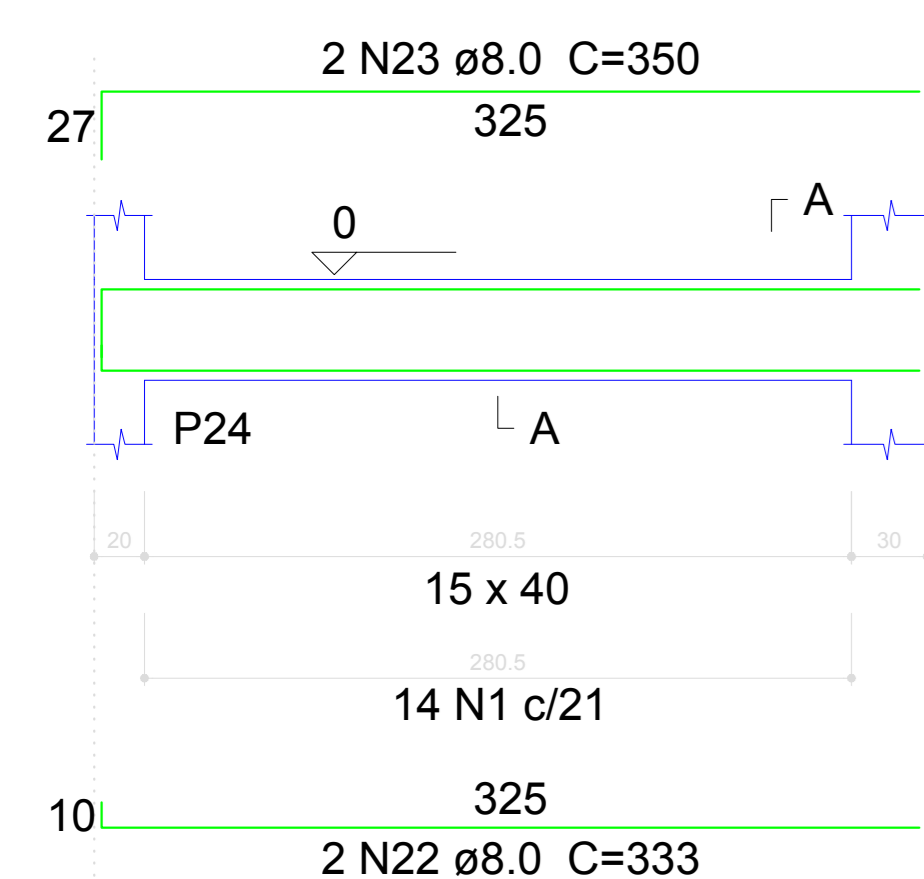
SEÇÃO A-A

ESC 1:25



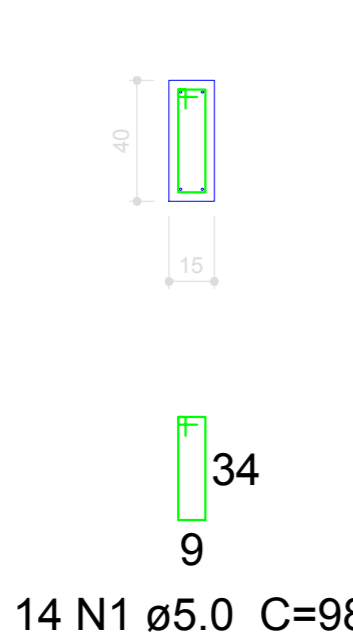
V13

ESC 1:30



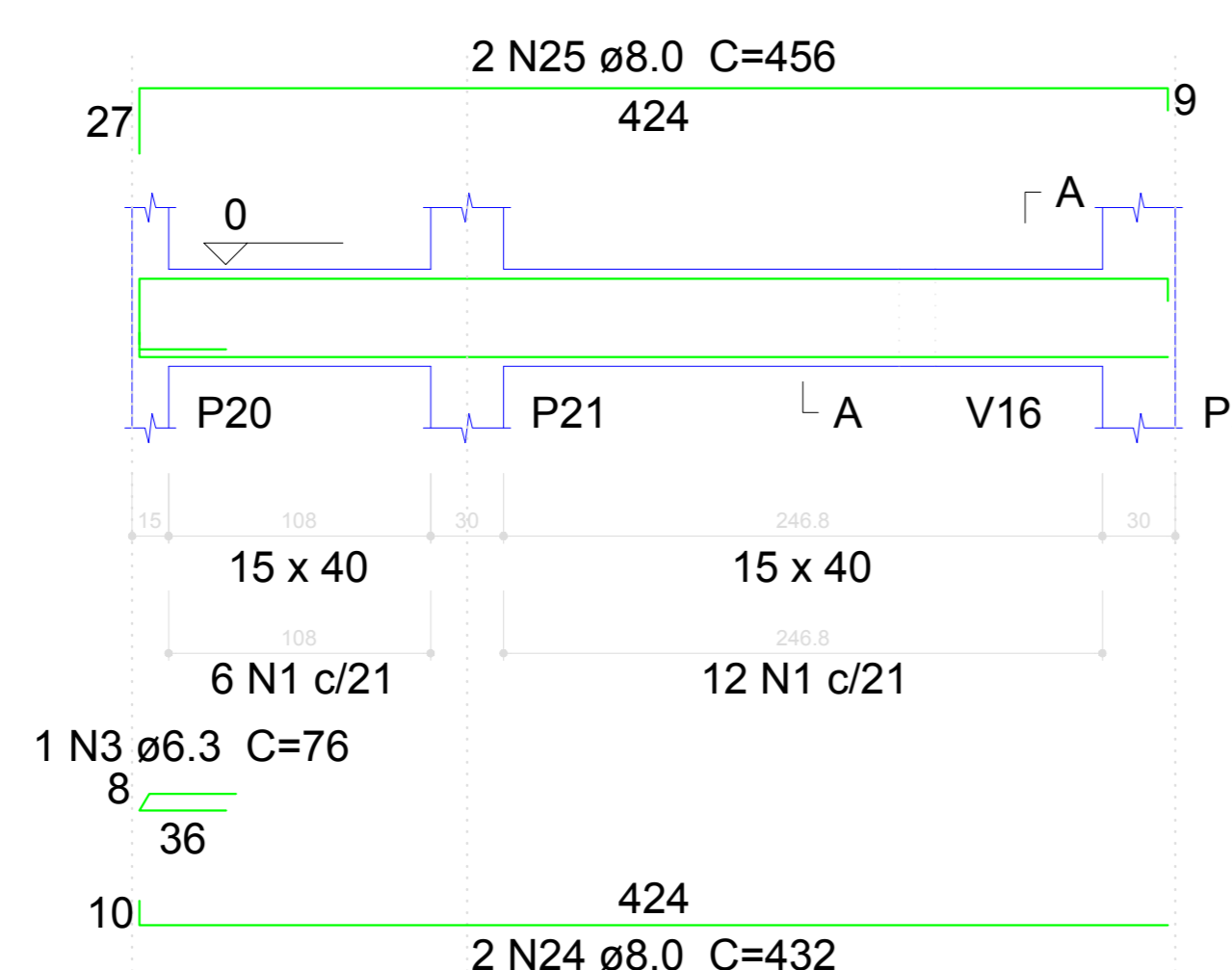
SEÇÃO A-A

ESC 1:25



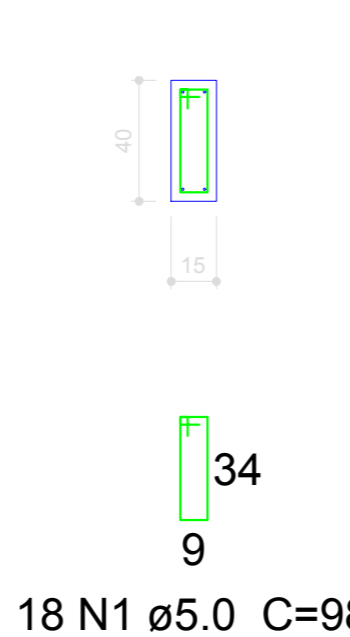
V10

ESC 1:30



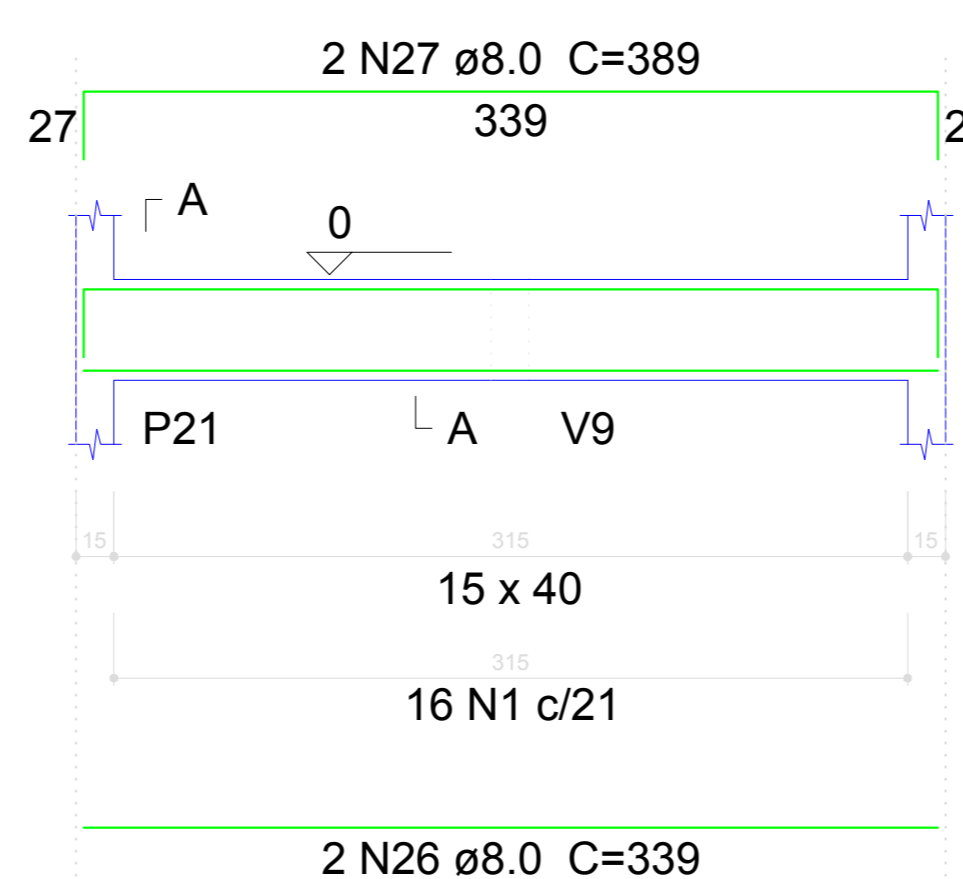
SEÇÃO A-A

ESC 1:25



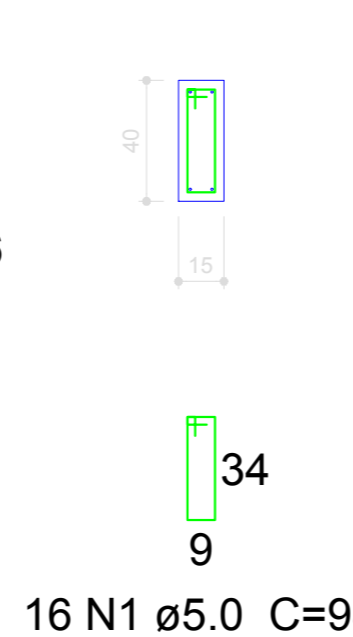
V15

ESC 1:30



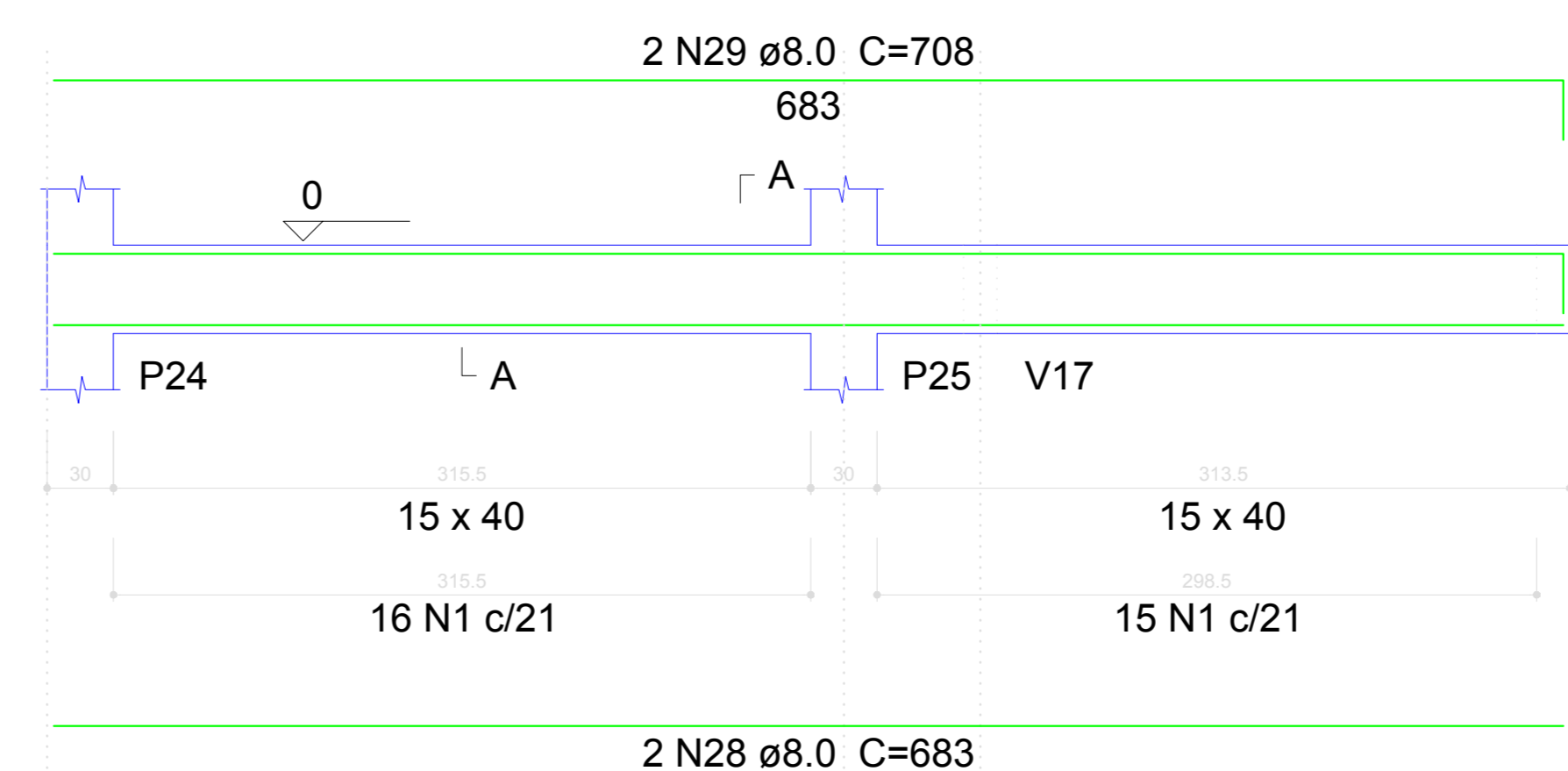
SEÇÃO A-A

ESC 1:25



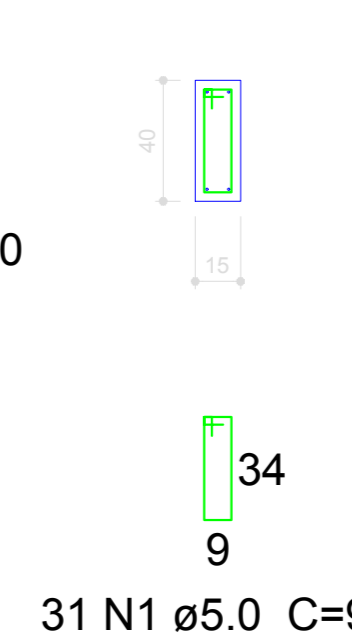
V12

ESC 1:30



SEÇÃO A-A

ESC 1:25



Luiz Carlos Schmulder
PREFEITO

Antony N. Fernandes
RESPONSÁVEL TÉCNICO

PREFEITURA MUNICIPAL DE BOCAINA DO SUL

Reforma e Ampliação Creche Raulino Felipe dos Santos

Projeto estrutural, detalhamento das vigas do baldrame 1/2

Prefeito
Luiz Carlos Schmulder
Responsável técnico
Eng. Antony N. Fernandes

escalas:
Indicadas

CREA nº
136779-8

Prancha nº
07/08