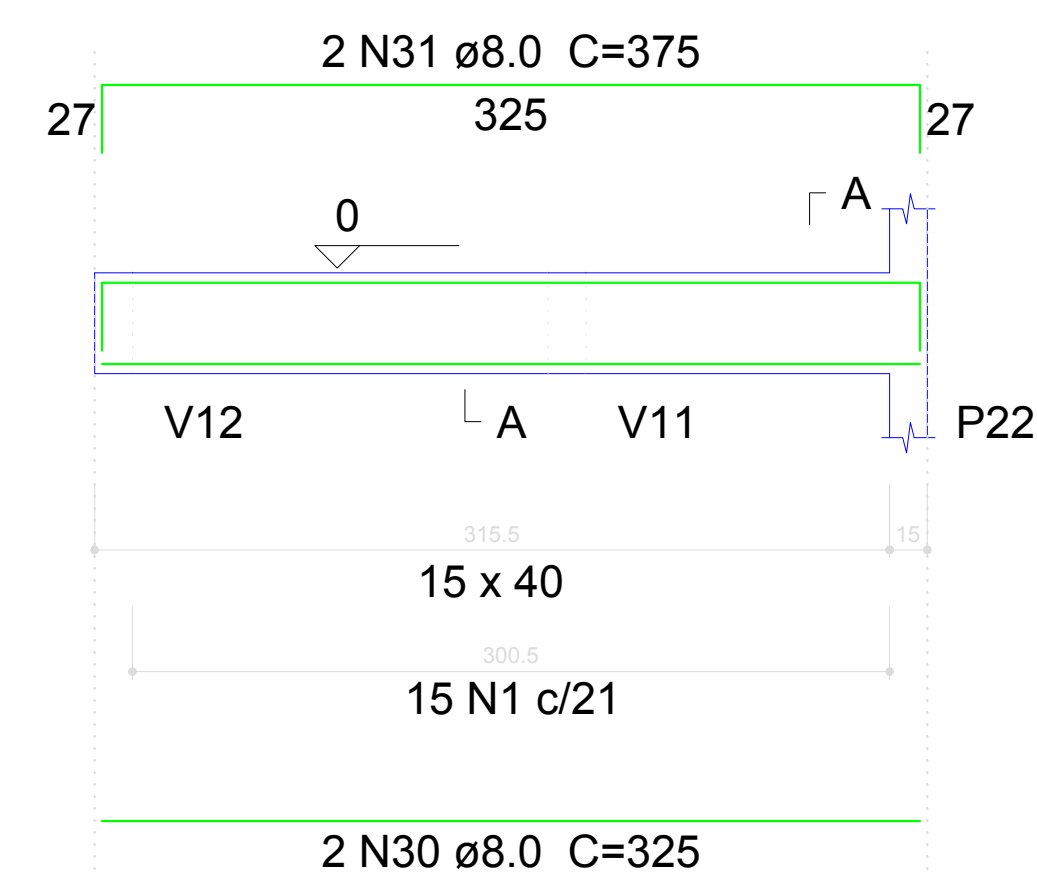
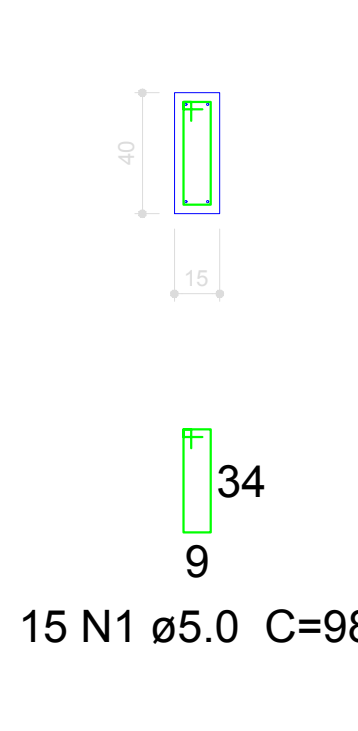


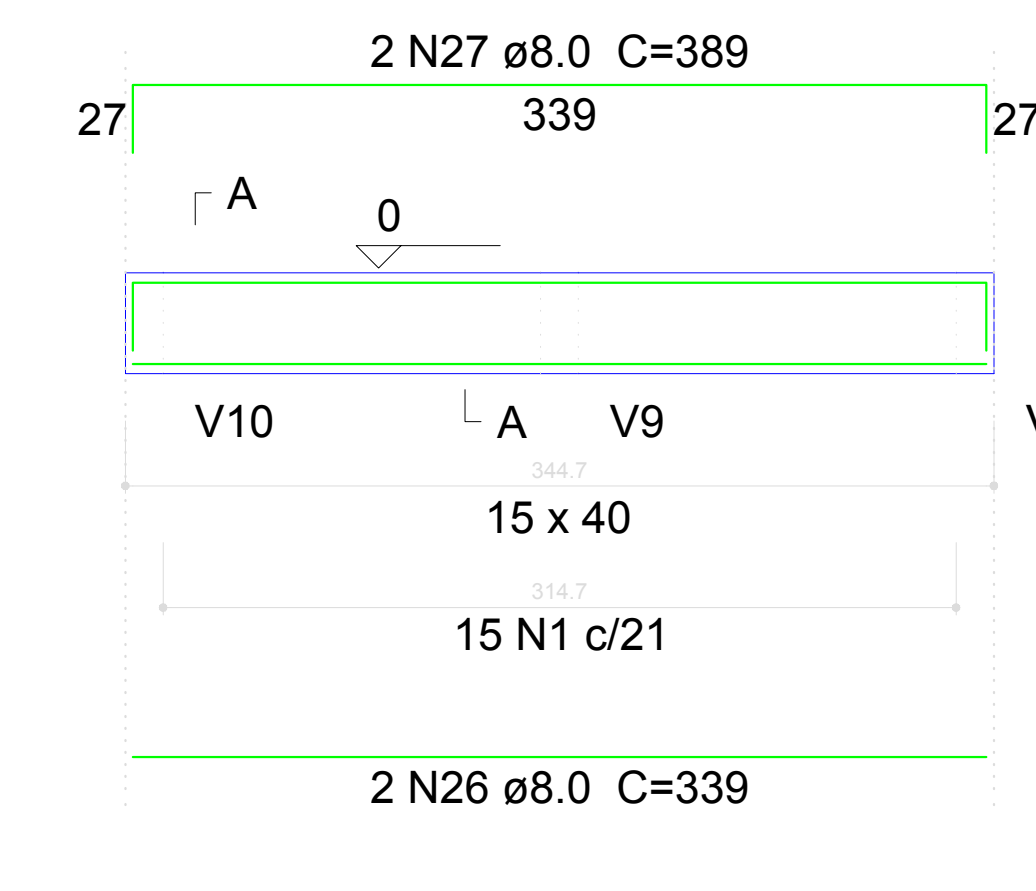
V17
ESC 1:30



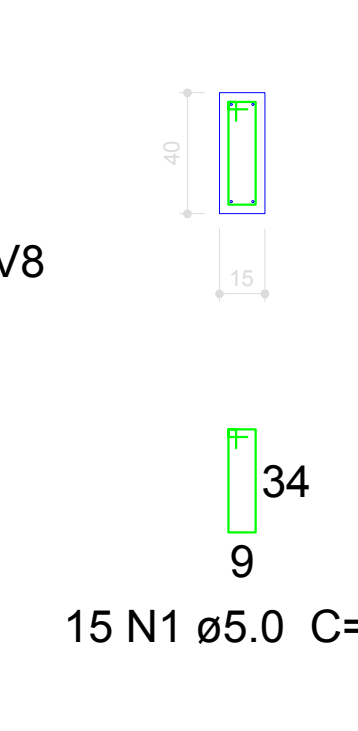
SEÇÃO A-A
ESC 1:25



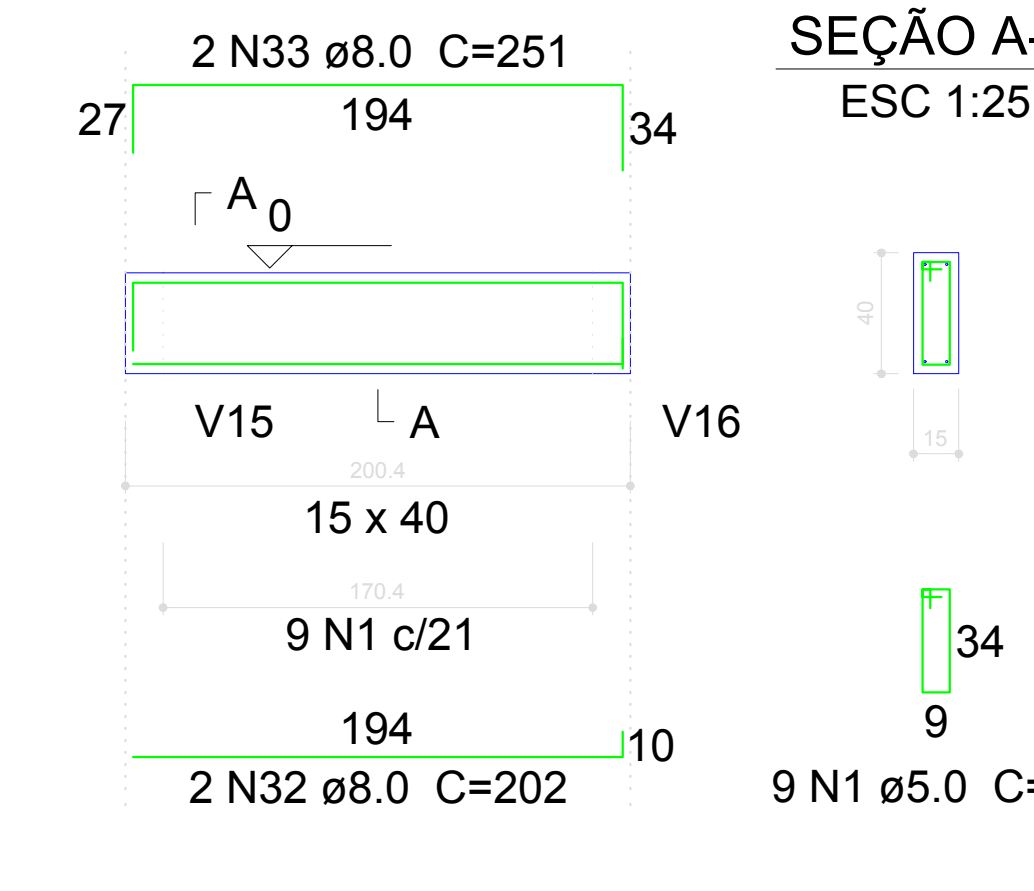
V16
ESC 1:30



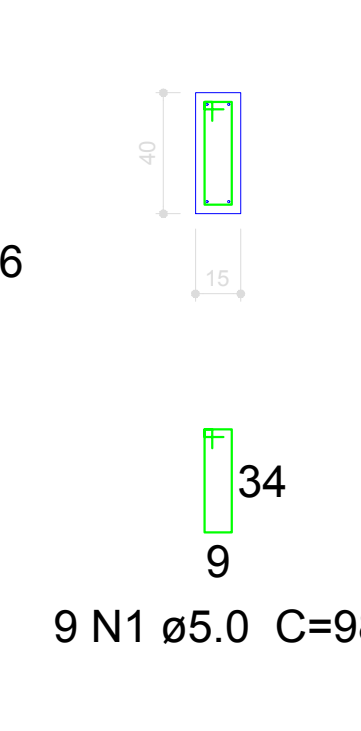
SEÇÃO A-A
ESC 1:25



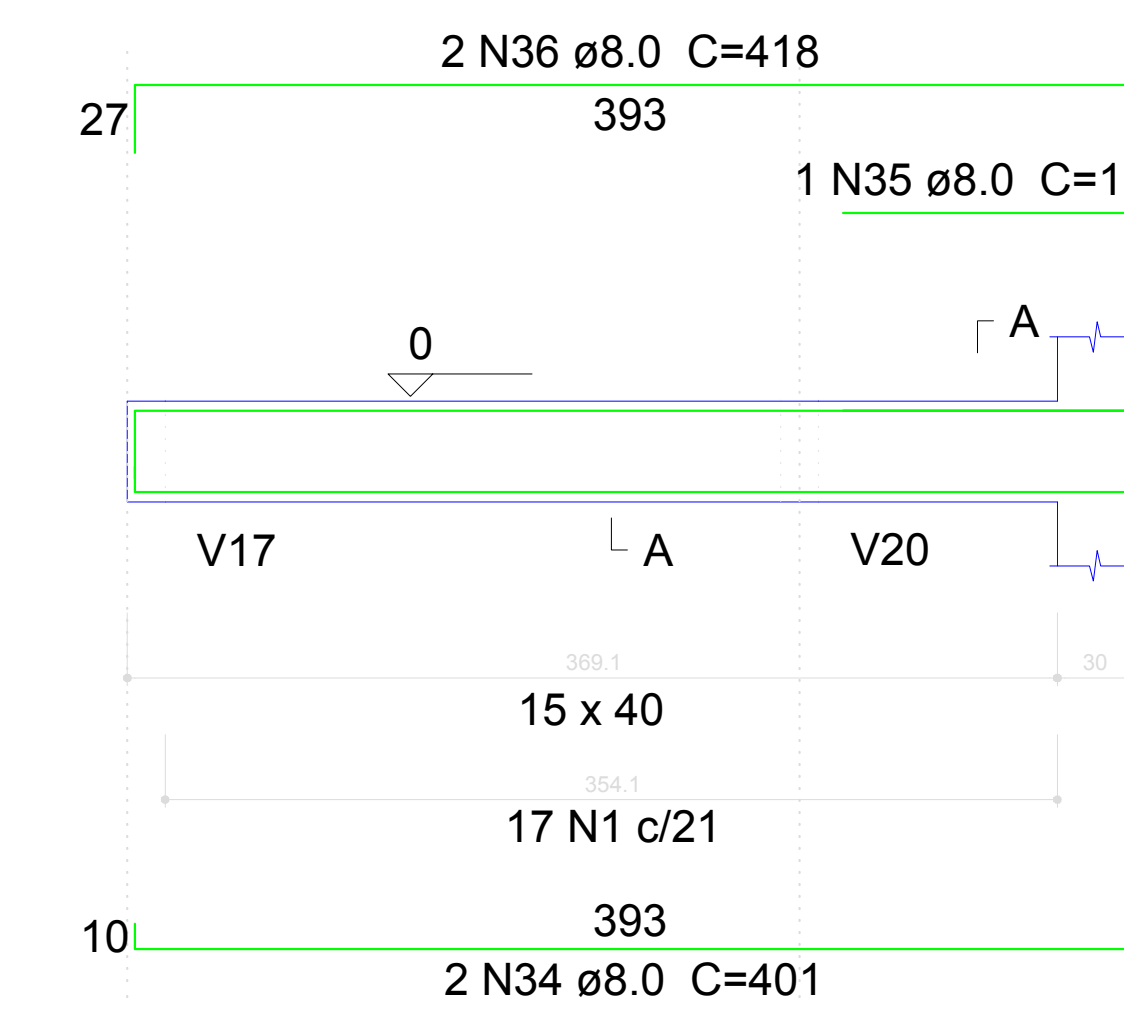
V9
ESC 1:30



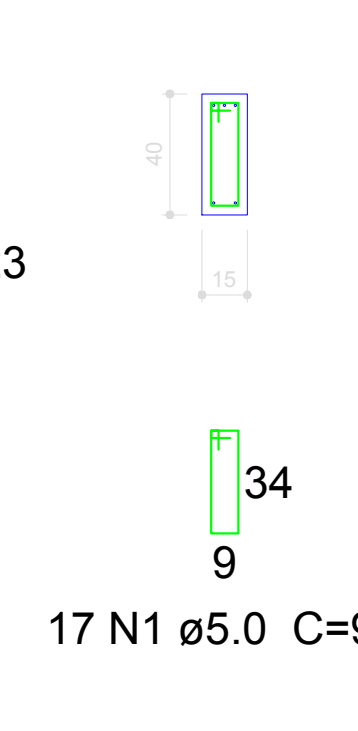
SEÇÃO A-A
ESC 1:25



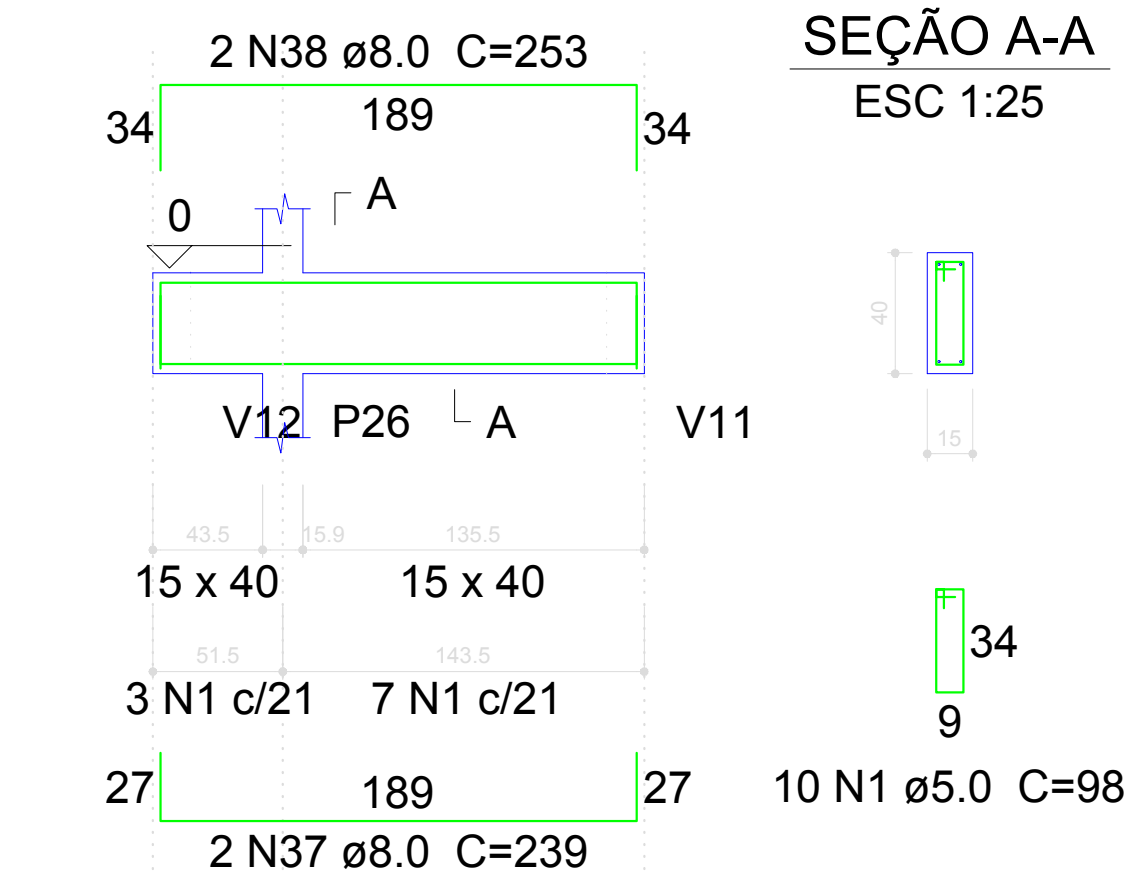
V11
ESC 1:30



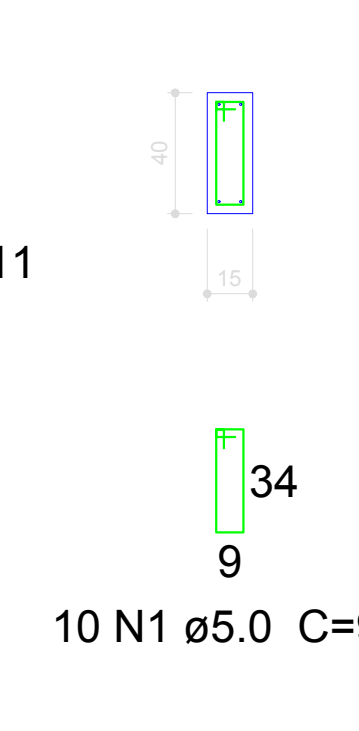
SEÇÃO A-A
ESC 1:25



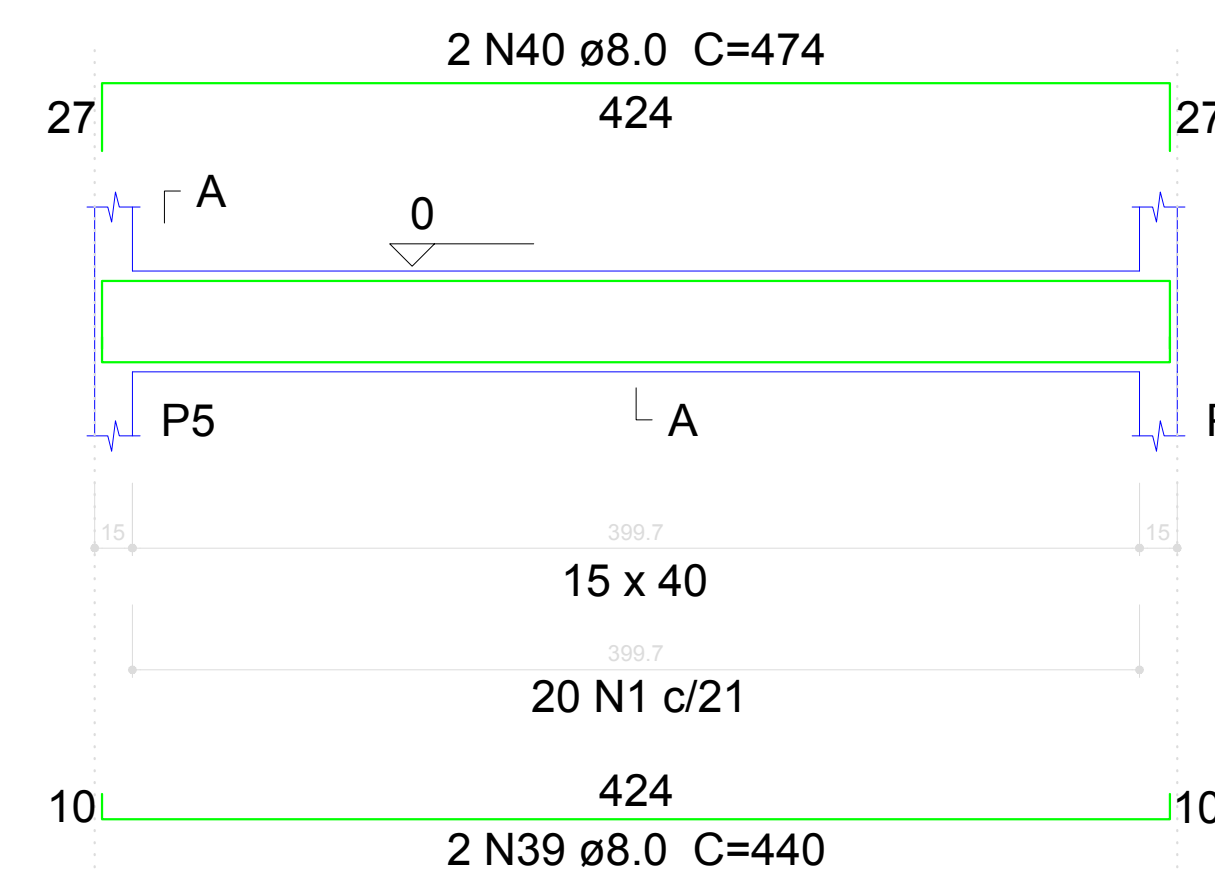
V20
ESC 1:30



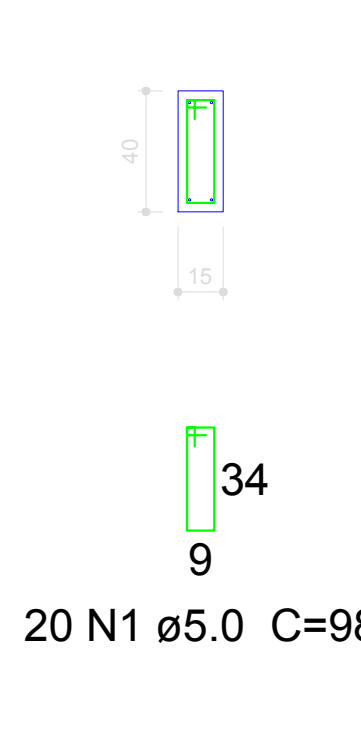
SEÇÃO A-A
ESC 1:25



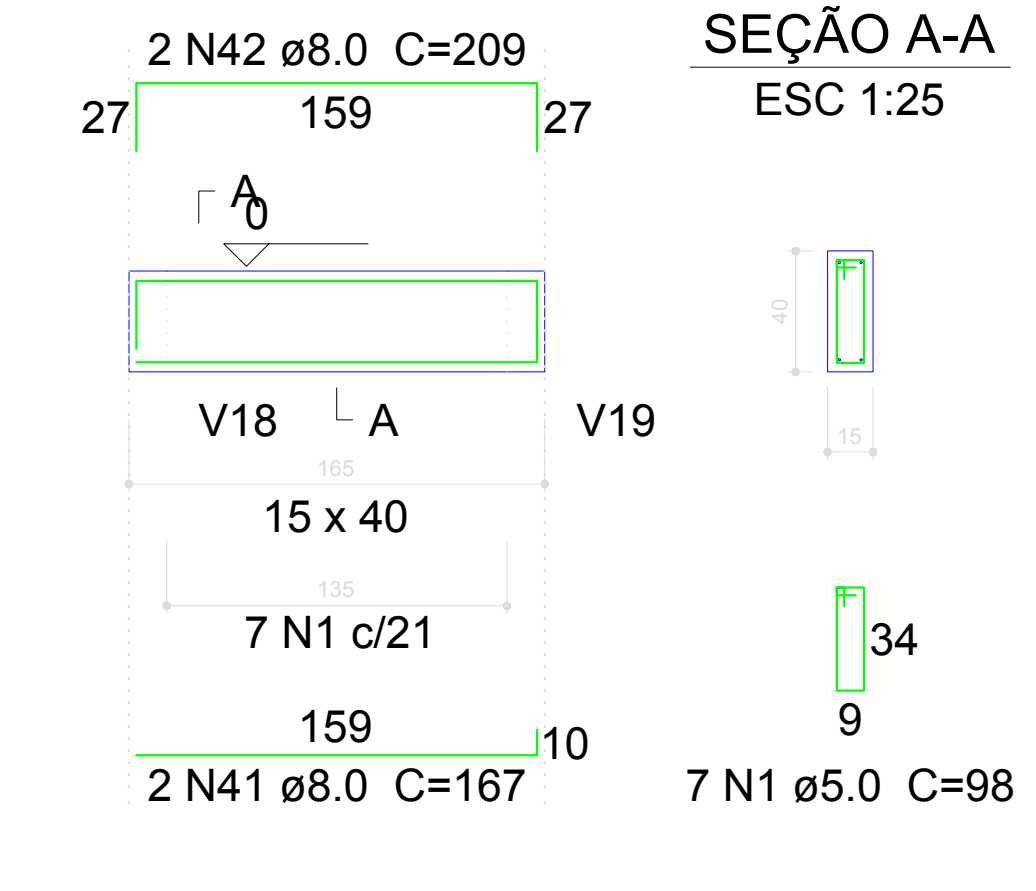
V3
ESC 1:30



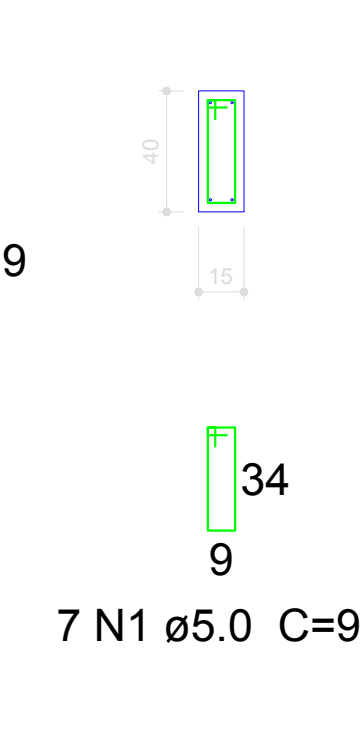
SEÇÃO A-A
ESC 1:25



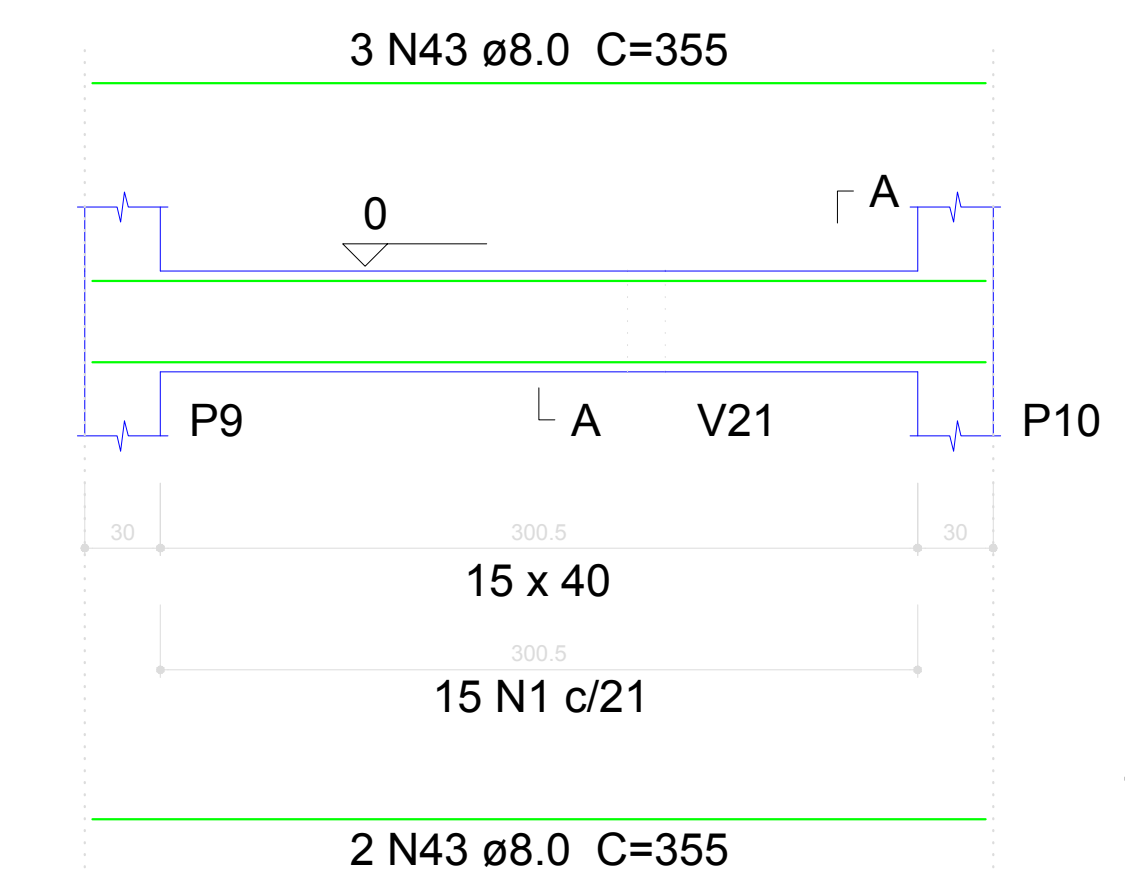
V2
ESC 1:30



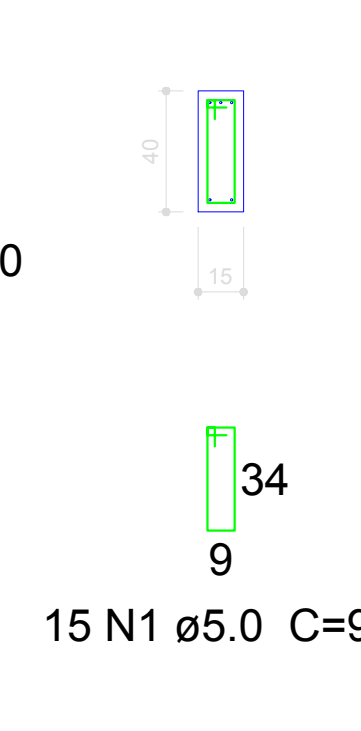
SEÇÃO A-A
ESC 1:25



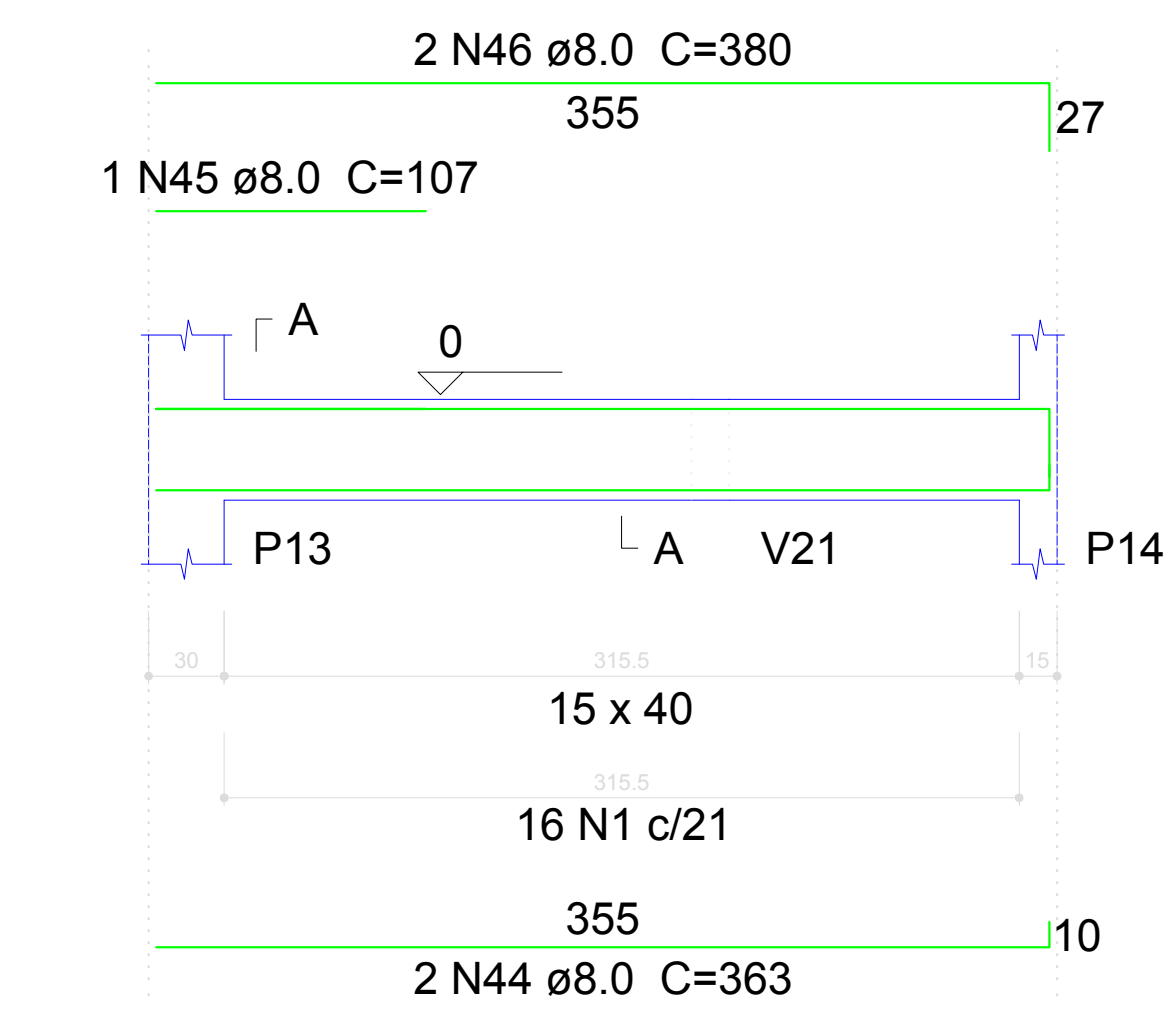
V4
ESC 1:30



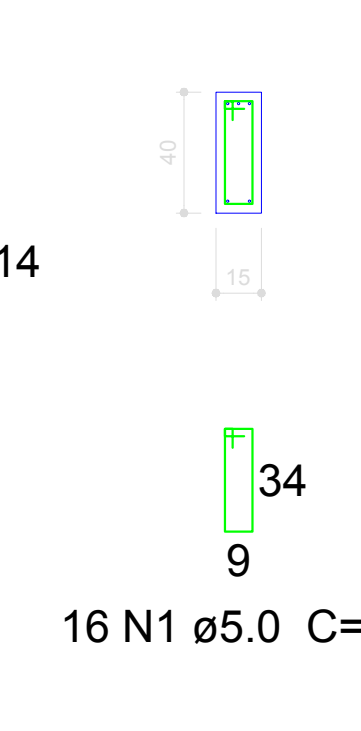
SEÇÃO A-A
ESC 1:25



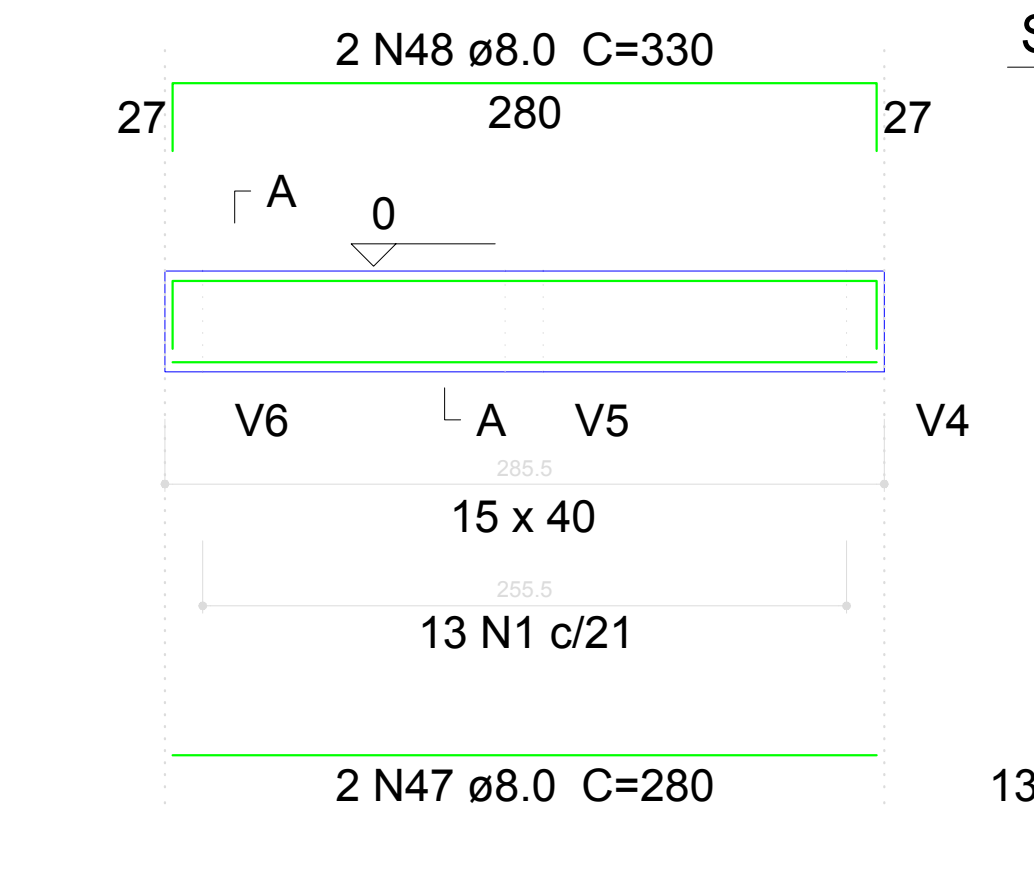
V6
ESC 1:30



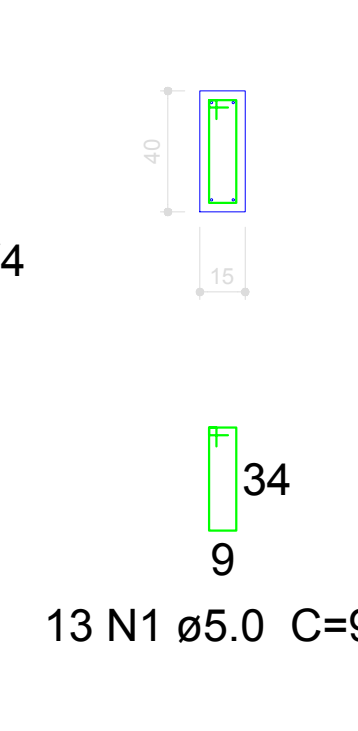
SEÇÃO A-A
ESC 1:25



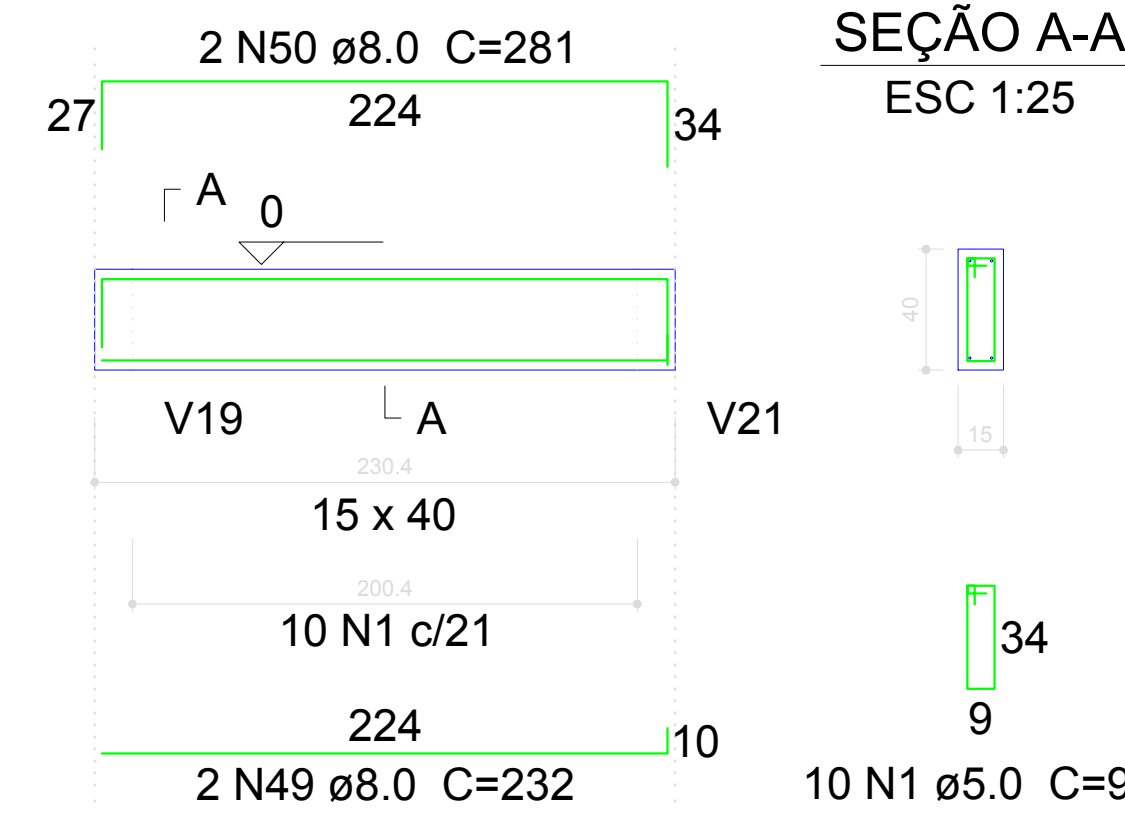
V21
ESC 1:30



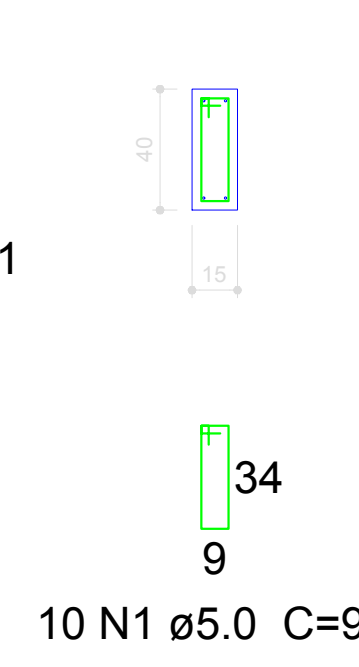
SEÇÃO A-A
ESC 1:25



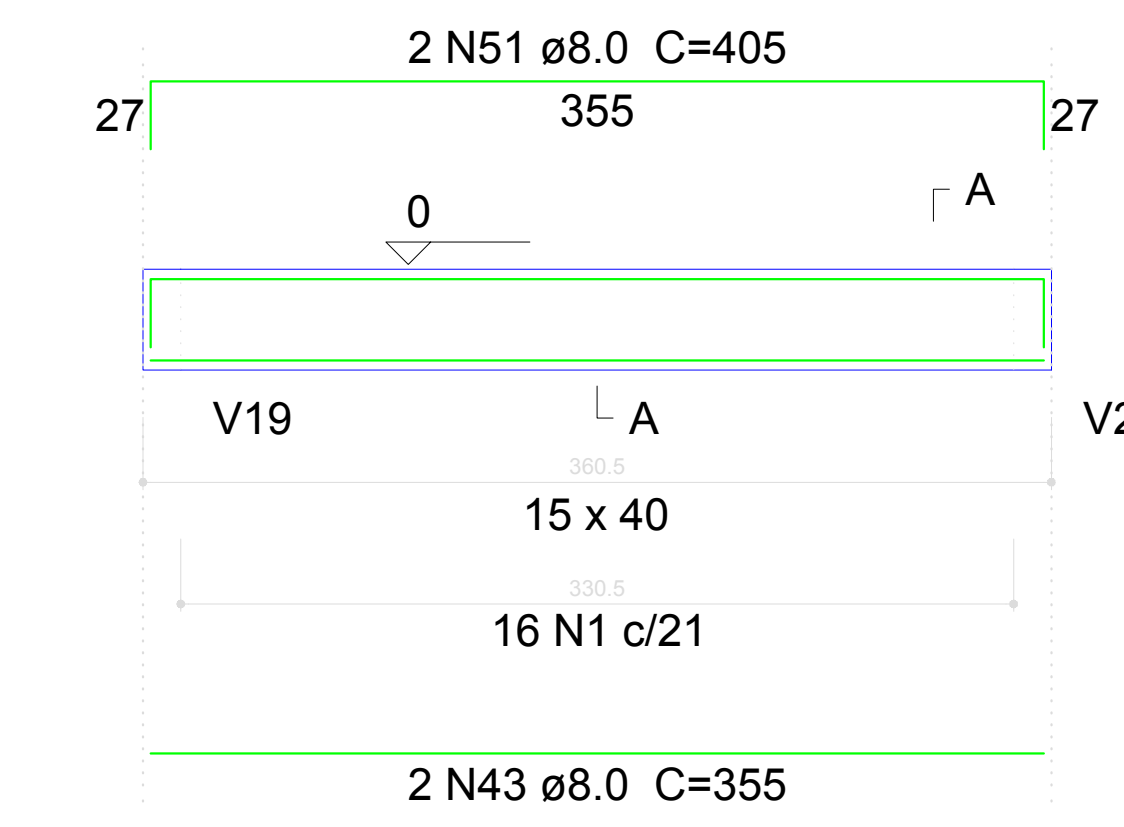
V5
ESC 1:30



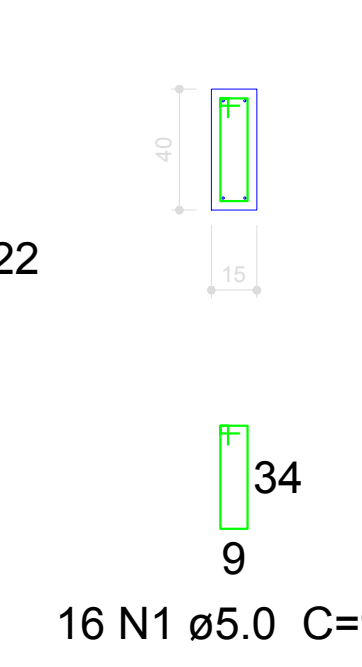
SEÇÃO A-A
ESC 1:25



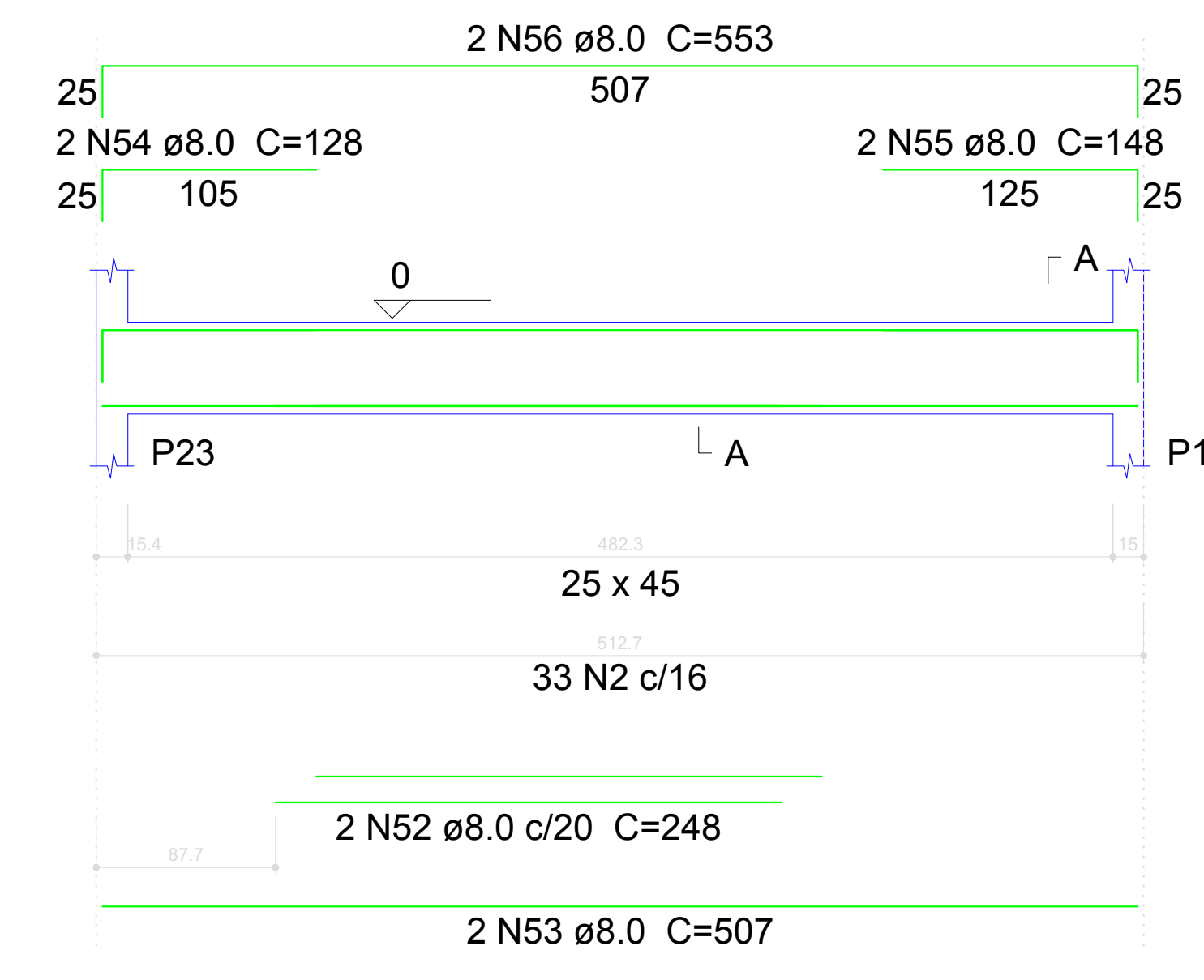
V7
ESC 1:30



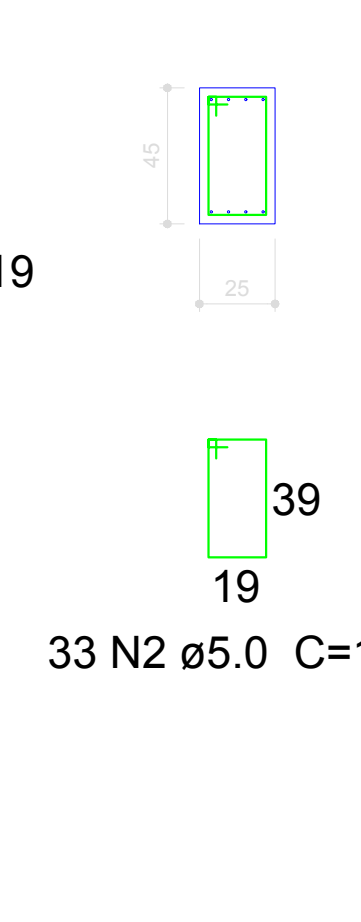
SEÇÃO A-A
ESC 1:25





V23
ESC 1:30



SEÇÃO A-A
ESC 1:25



Luiz Carlos Schmulder PREFEITO		Antony N. Fernandes RESPONSÁVEL TÉCNICO	
PREFEITURA MUNICIPAL DE BOCAINA DO SUL			
Reforma e Ampliação Creche Raulino Felipe dos Santos			
Projeto estrutural, detalhamento das vigas do baldrame 1/2			
			
Prefeito Luiz Carlos Schmulder		escalas: Indicadas	
Responsável técnico Eng. Antony N. Fernandes		CREA nº 136779-8	Prancha nº 08/08