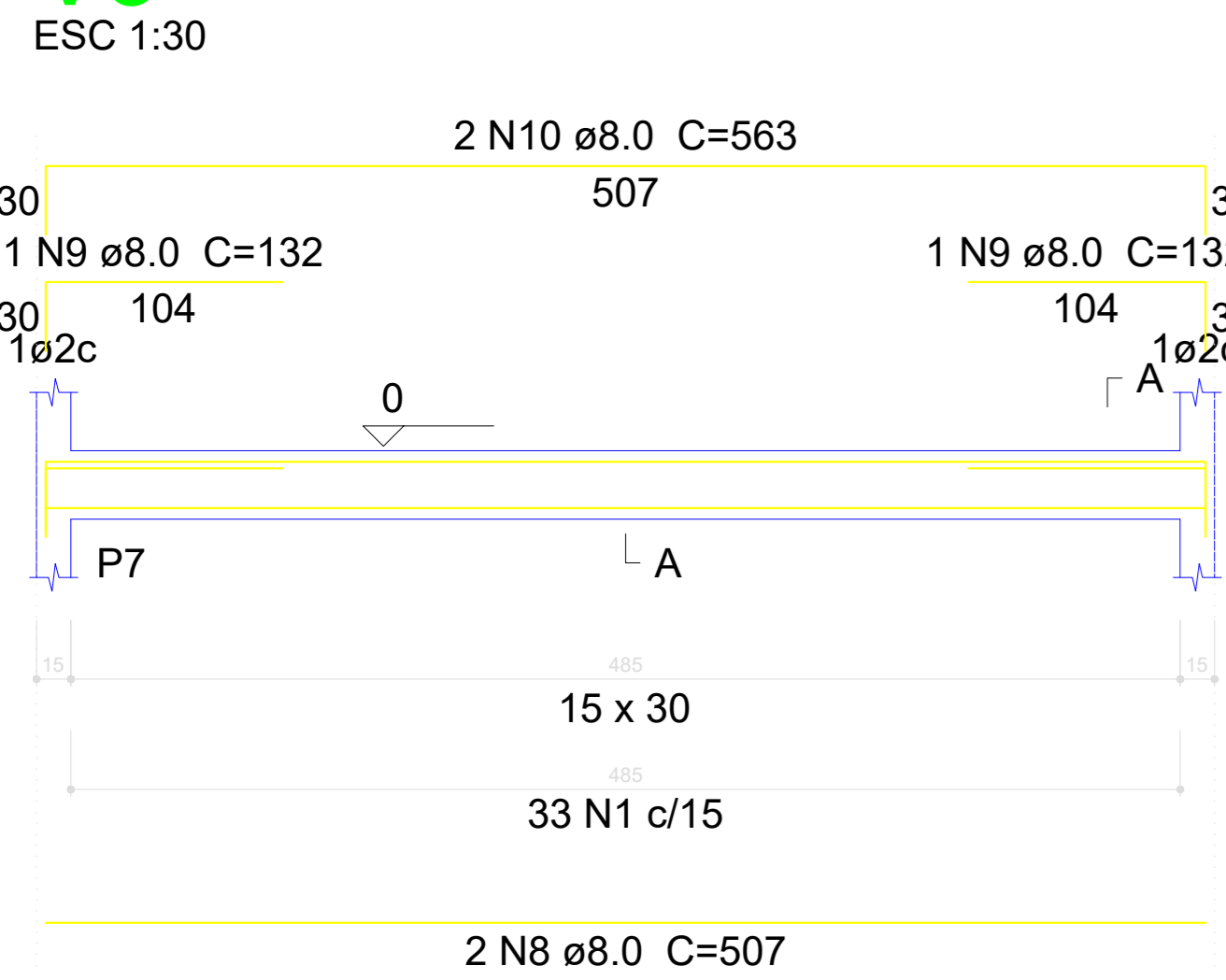
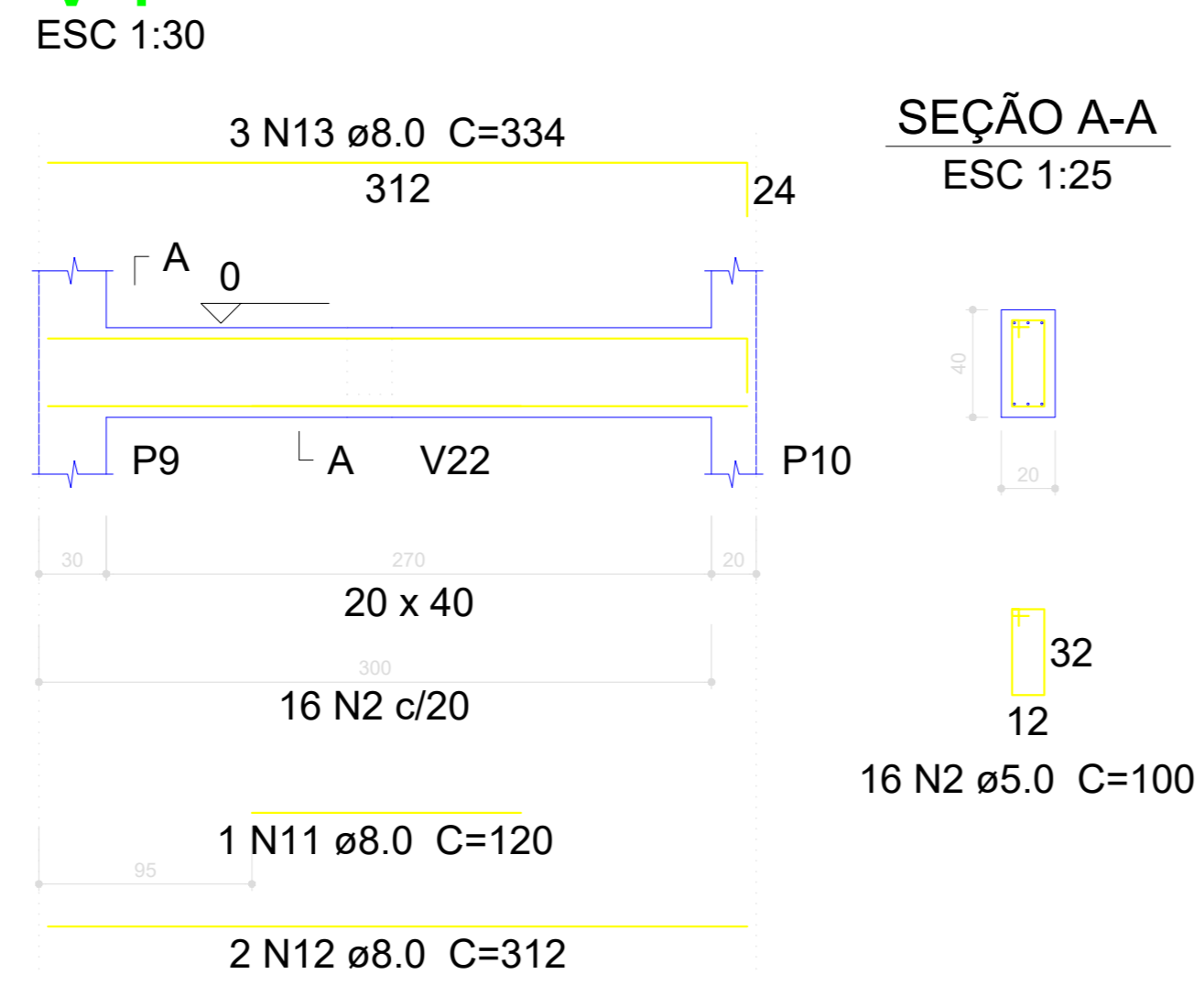


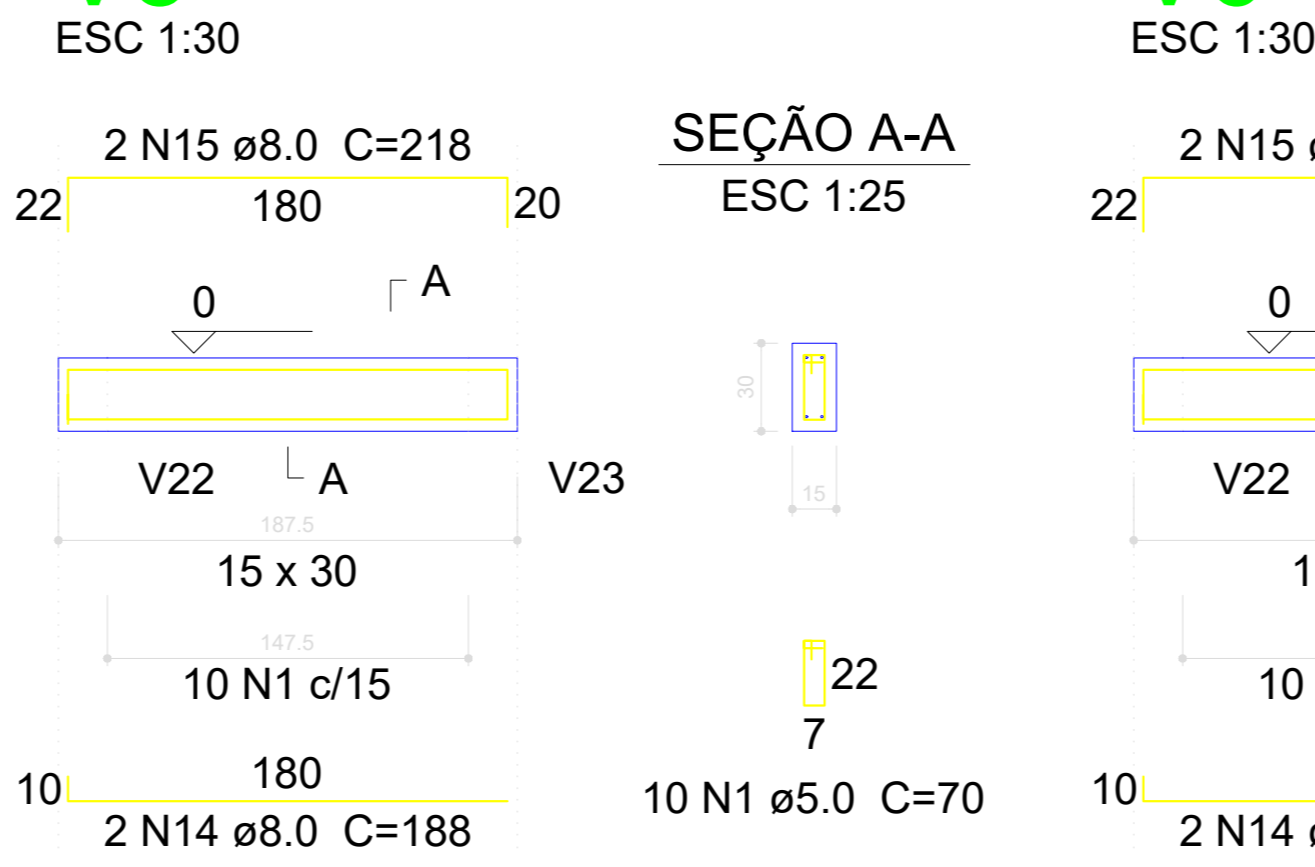
V3



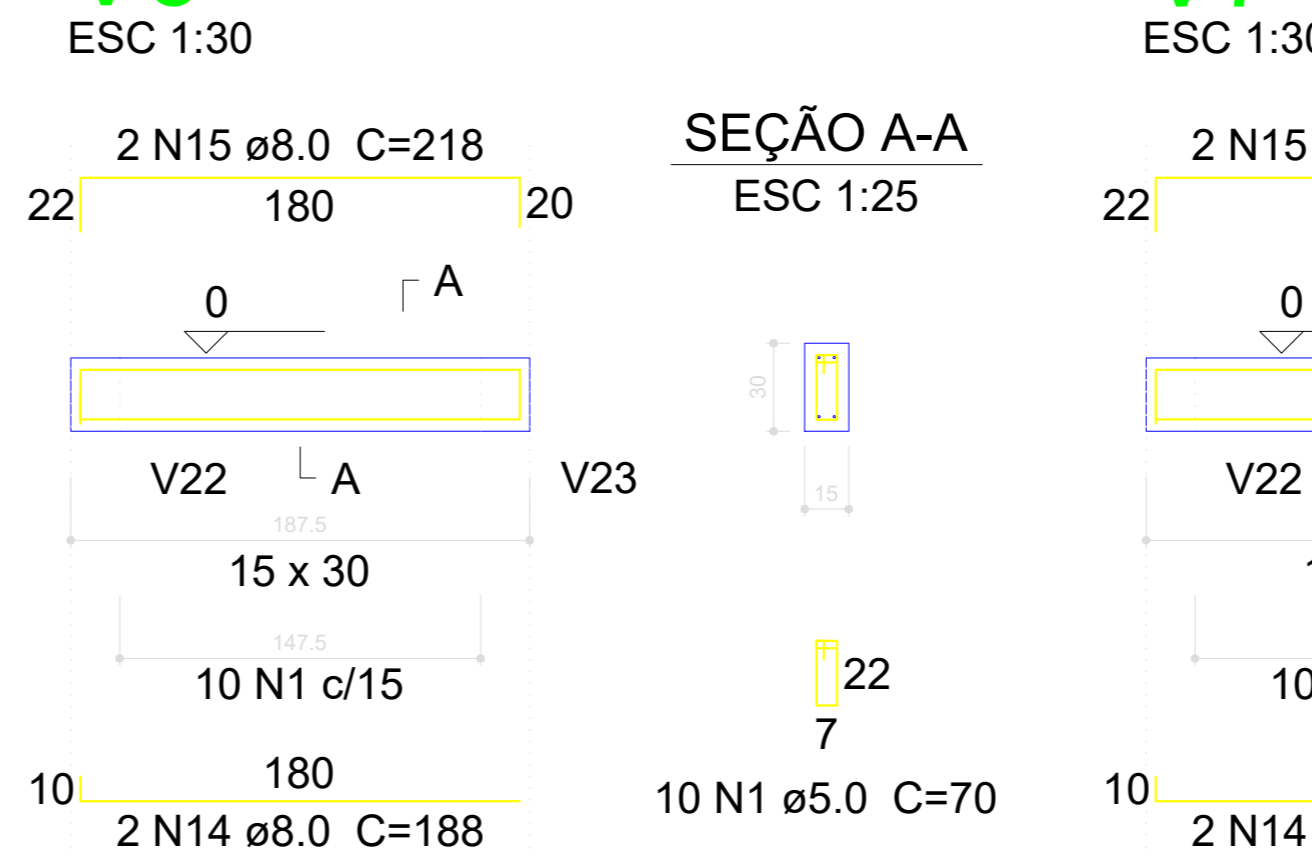
V4



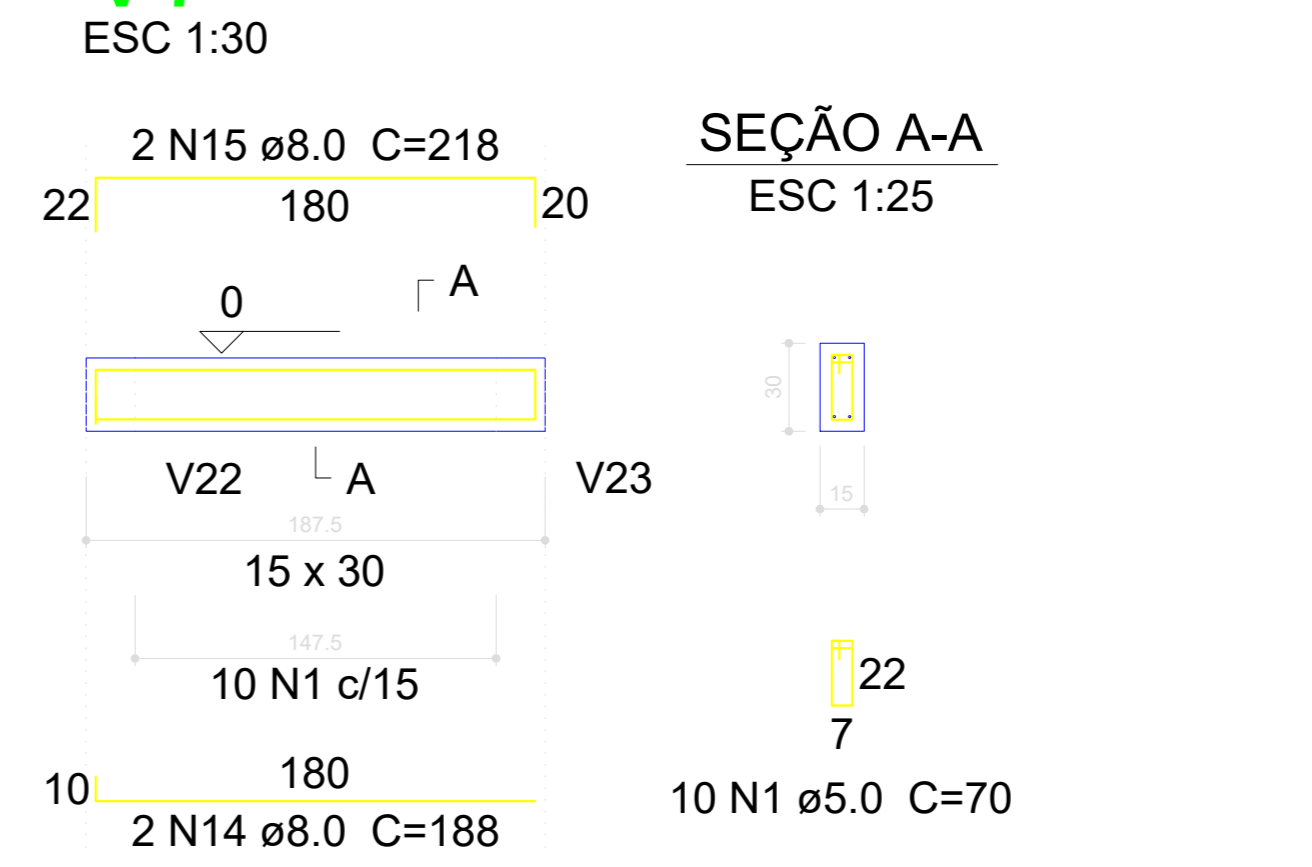
V5



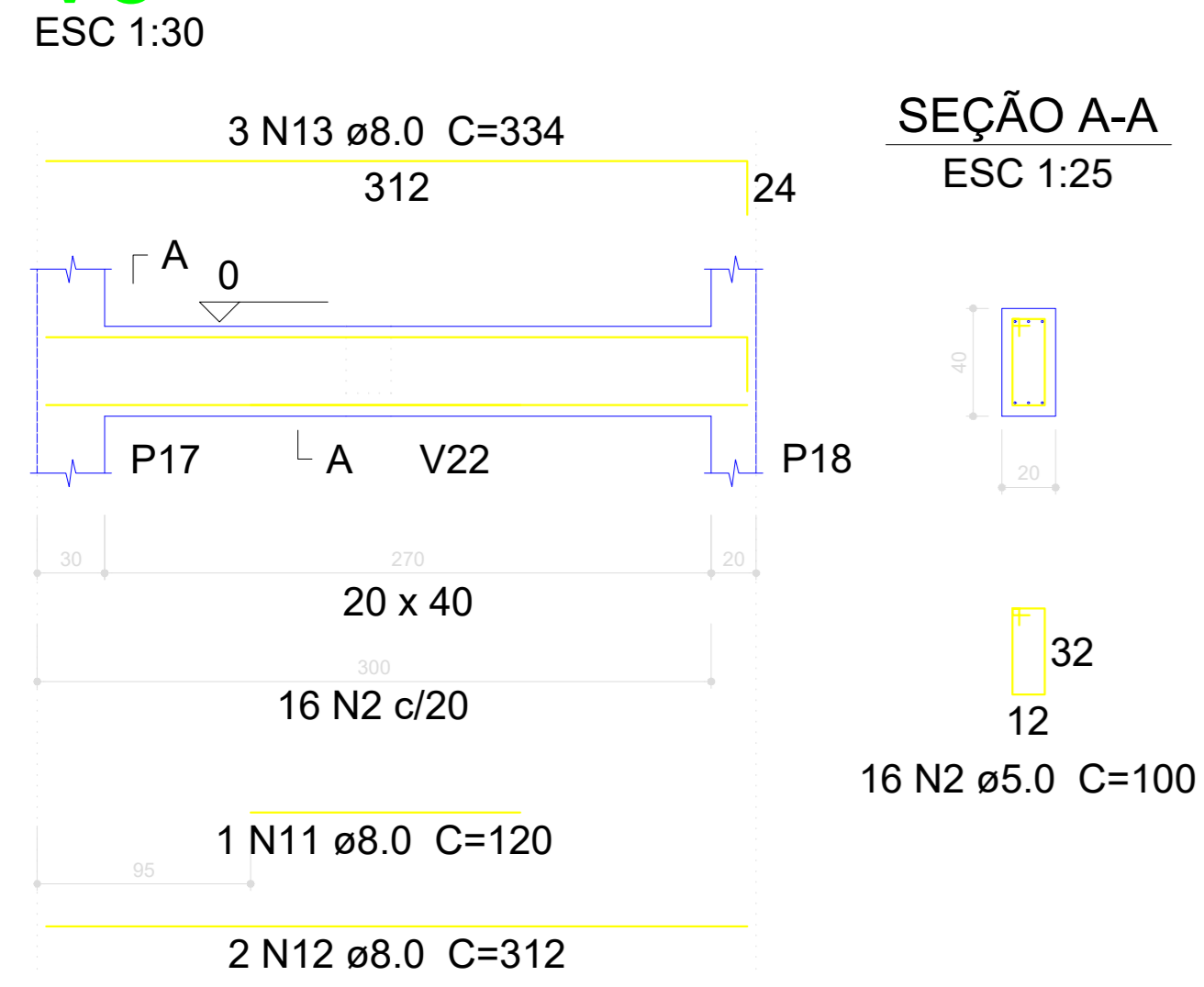
V6



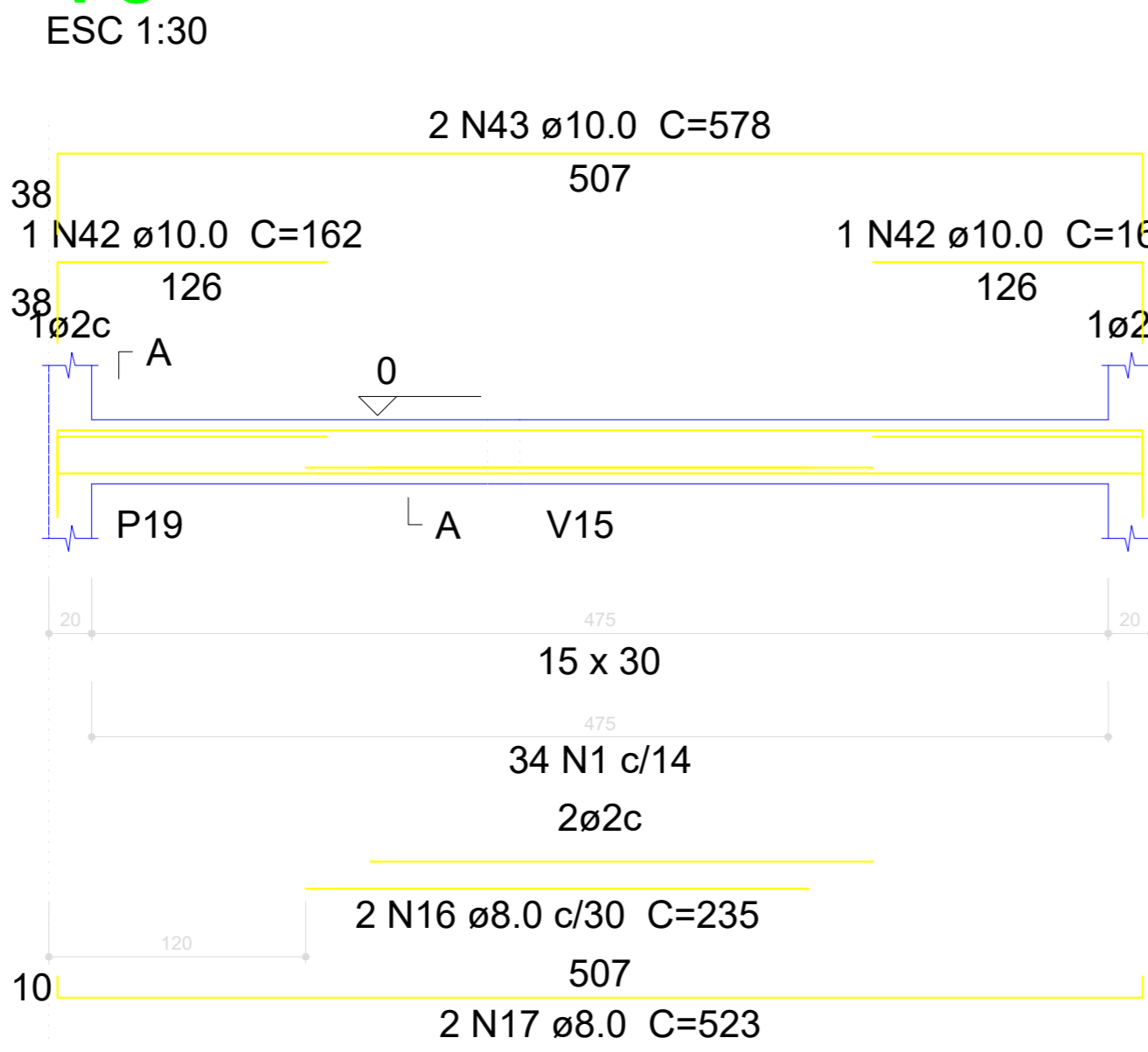
V7



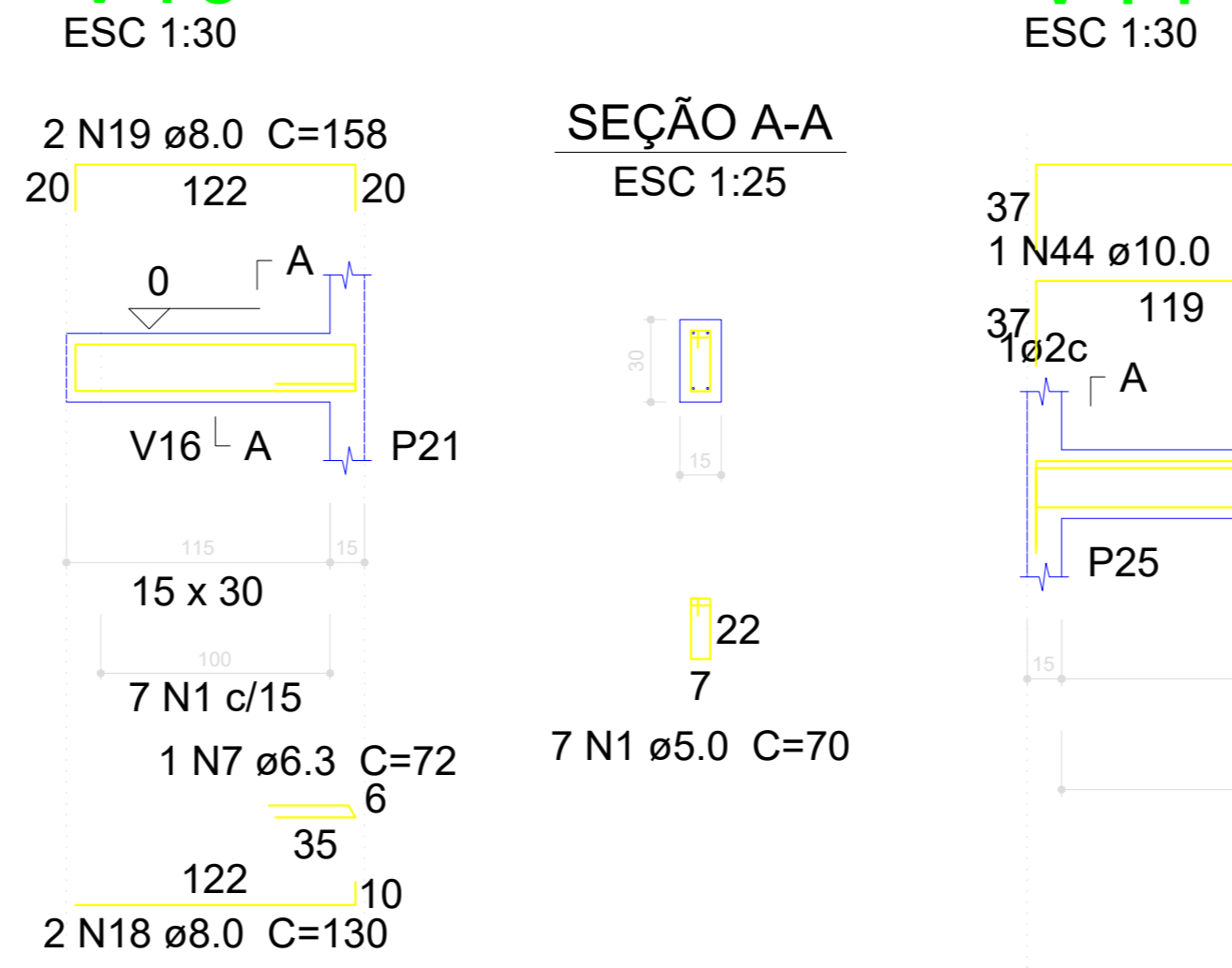
V8



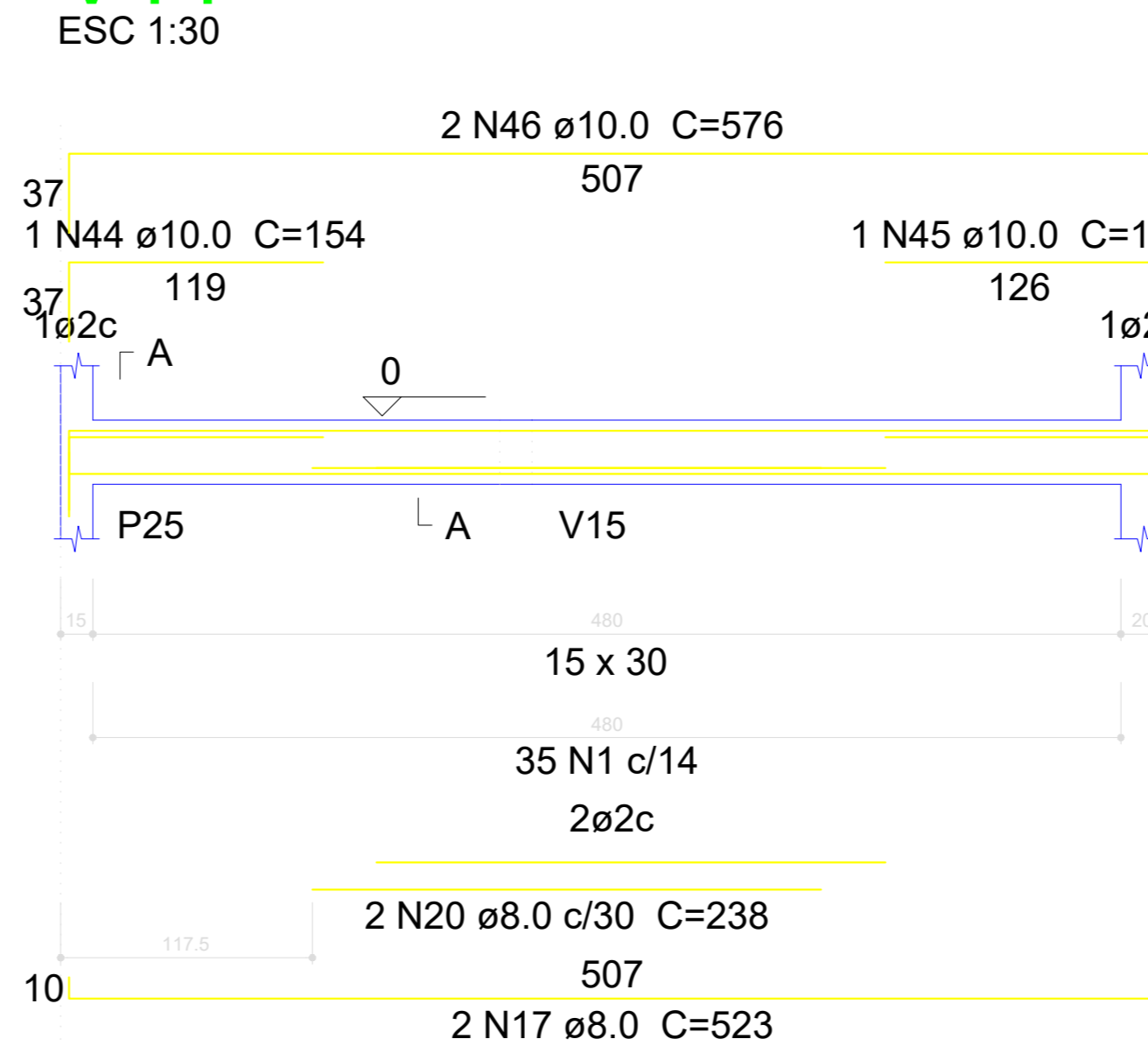
V9



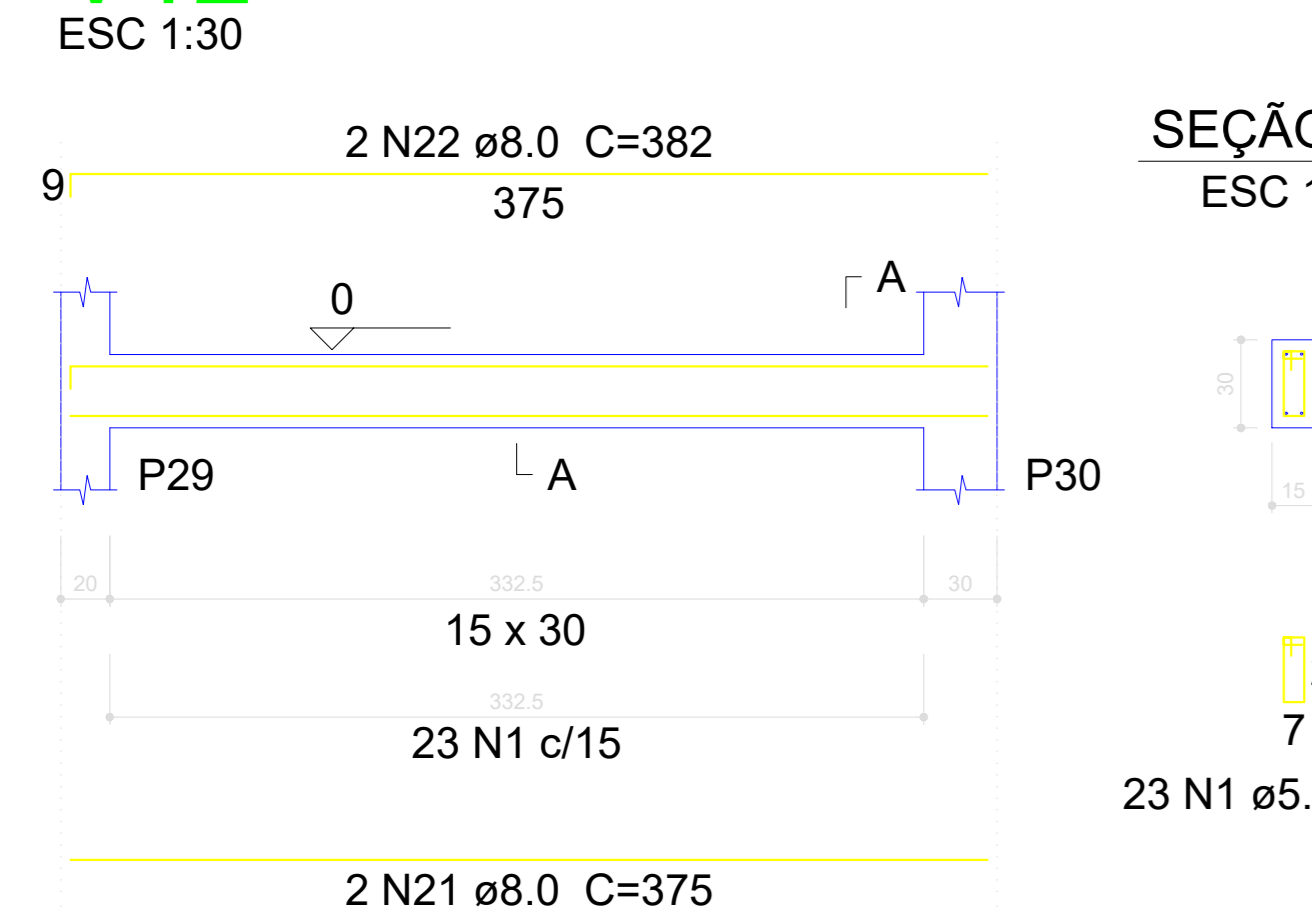
V10



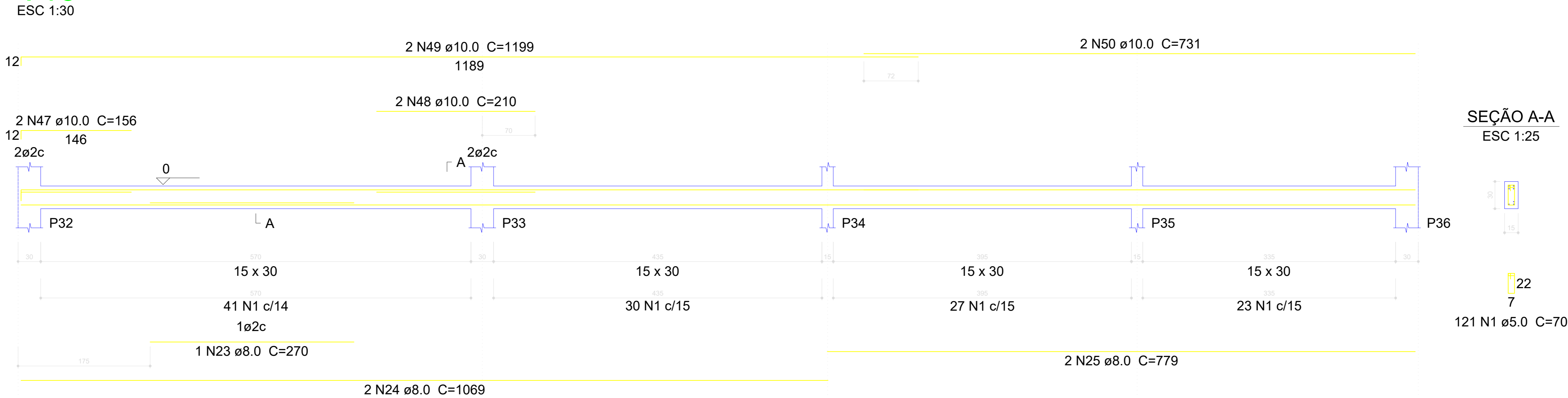
V11



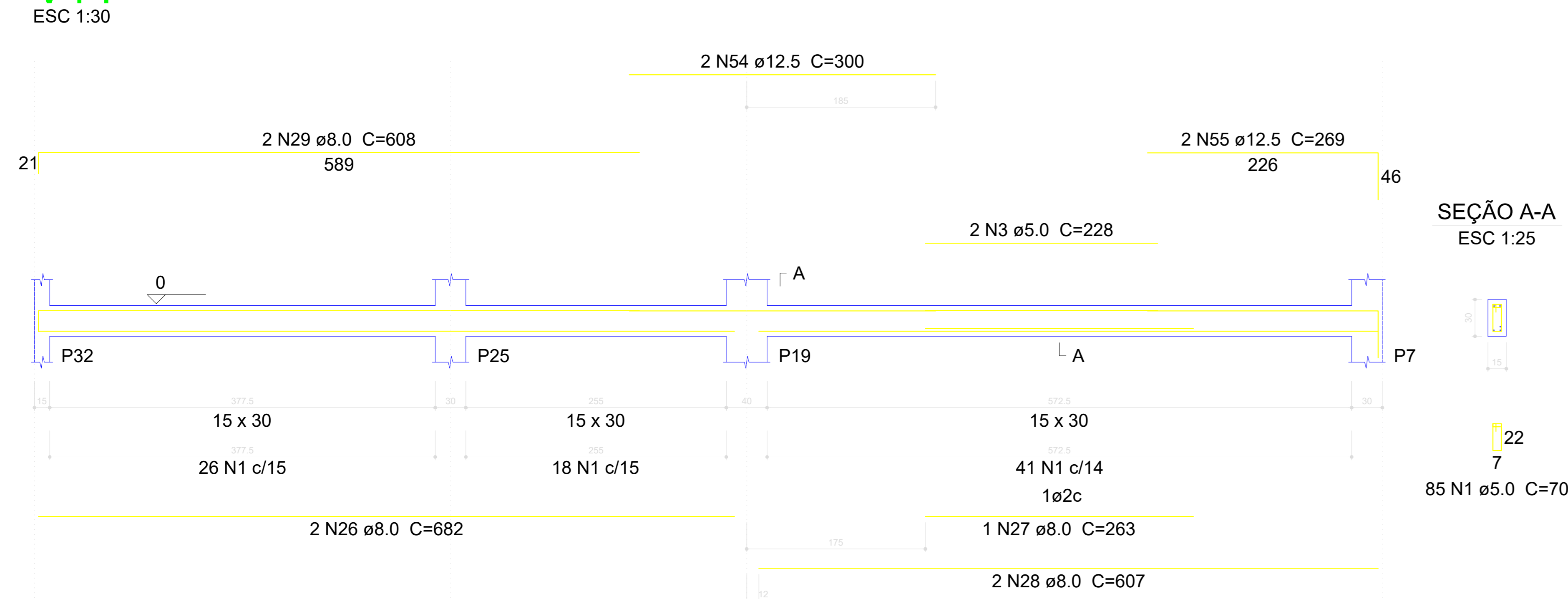
V12



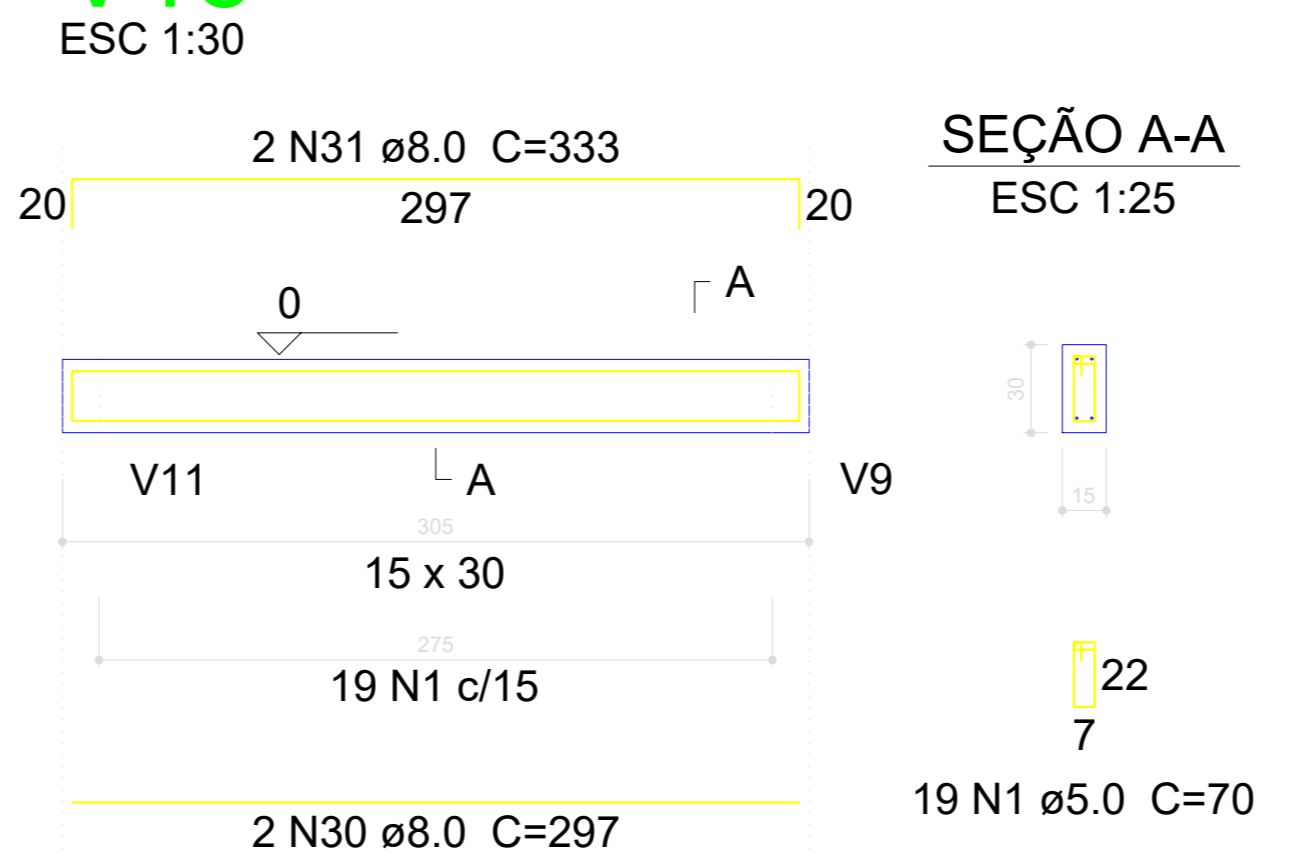
V13



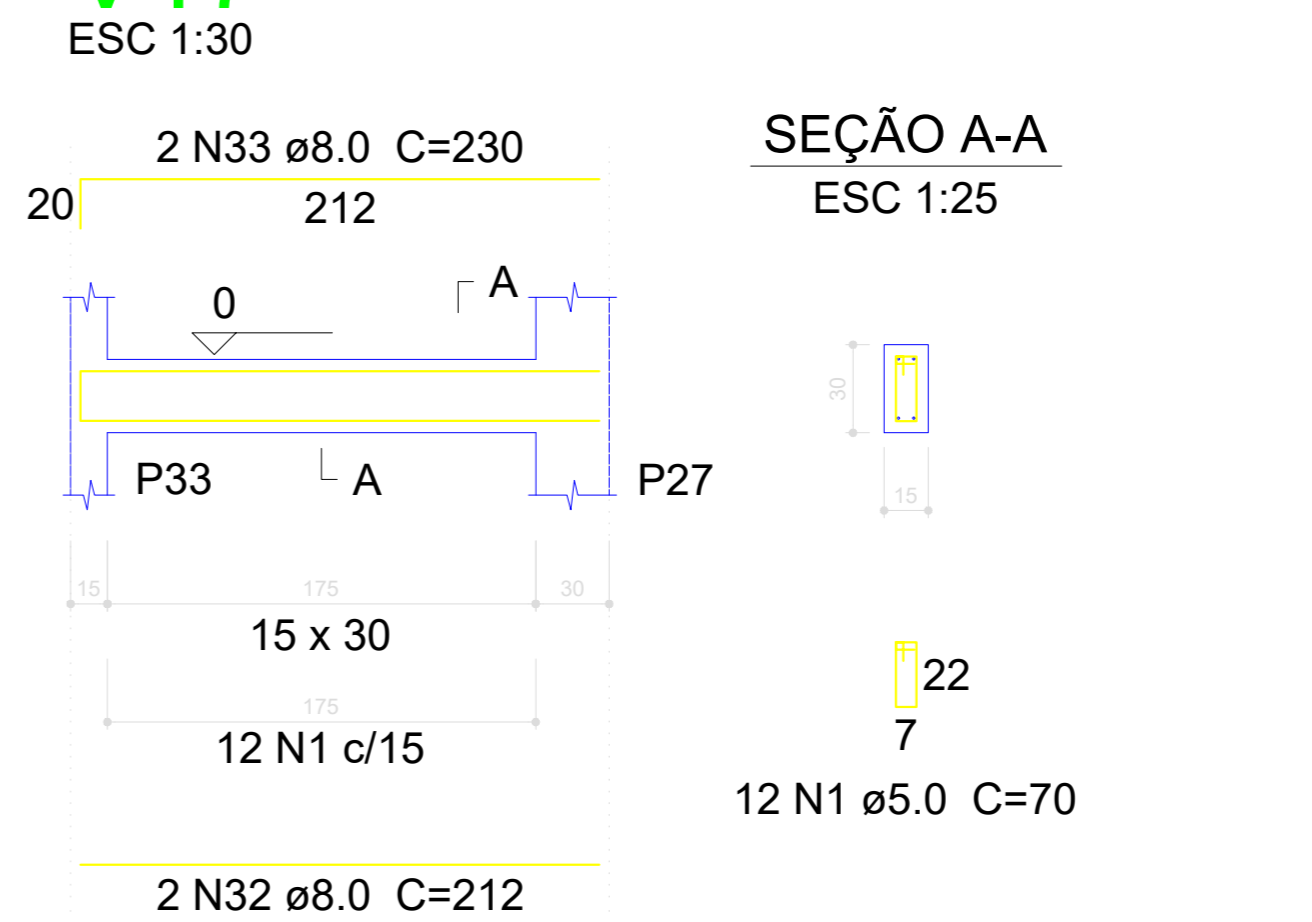
V14



V15



V17



Relação do aço

AÇO	N	DIAM (mm)	QUANT (Barras)	UNIT (cm)	C.TOTAL (cm)
CA60	1	5.0	519	70	36330
	2	5.0	32	100	3200
	3	5.0	2	228	456
	4	5.0	2	233	466
	5	5.0	2	300	600
CA50	6	5.0	58	80	4640
	7	6.3	1	72	72
	8	8.0	2	507	1014
	9	8.0	2	132	264
	10	8.0	2	563	1126
	11	8.0	2	120	240
	12	8.0	4	312	1248
	13	8.0	6	334	2004
	14	8.0	6	188	1128
	15	8.0	6	218	1308
	16	8.0	2	235	470
	17	8.0	4	523	2092
	18	8.0	2	130	260
	19	8.0	2	158	316
	20	8.0	2	238	476
	21	8.0	2	375	750
	22	8.0	2	382	764
	23	8.0	1	270	270
	24	8.0	2	1069	2138
	25	8.0	2	779	1558
	26	8.0	2	682	1364
	27	8.0	1	263	263
	28	8.0	2	607	1214
	29	8.0	2	608	1216
	30	8.0	2	297	594
	31	8.0	2	333	666
	32	8.0	12	212	2544
	33	8.0	2	230	460
	34	8.0	1	268	268
	35	8.0	2	912	1824
	36	8.0	2	427	854
	37	8.0	2	477	954
	38	8.0	2	248	496
	39	8.0	4	101	404
	40	8.0	1	190	190
	41	8.0	2	452	904
	42	10.0	2	162	324
	43	10.0	2	578	1156
	44	10.0	1	154	154
	45	10.0	1	161	161
	46	10.0	2	576	1152
	47	10.0	2	156	312
	48	10.0	2	210	420
	49	10.0	2	1199	2398
	50	10.0	2	731	1462
	51	10.0	1	285	285
	52	10.0	2	432	864
	53	10.0	3	452	1356
	54	12.5	2	300	600
	55	12.5	4	269	1076
	56	12.5	2	474	948

Resumo do aço

AÇO	DIAM (mm)	C.TOTAL (m)	PESO + 10 % (kg)
CA50	6.3	0.8	0.2
	8.0	316.5	137.3
	10.0	100.5	68.1
	12.5	26.3	27.8
CA60	5.0	457	77.5
PESO TOTAL (kg)			
CA50		233.5	
CA60		77.5	

Volume de concreto (C-25) = 4.8 m³
Área de forma = 76.11 m²

Luiz Carlos Schmler
PREFEITO

Antony N. Fernandes
RESPONSÁVEL TÉCNICO

PREFEITURA MUNICIPAL DE BOCAINA DO SUL

Reforma e Ampliação Creche Raulino Felipe dos Santos

Projeto estrutural, detalhamento das vigas do baldrame 1/2

Prefeito: Luiz Carlos Schmler
Responsável técnico: Eng. Antony N. Fernandes

escalas: Indicadas
CREA nº 136779-8
Prancha nº 08/09