

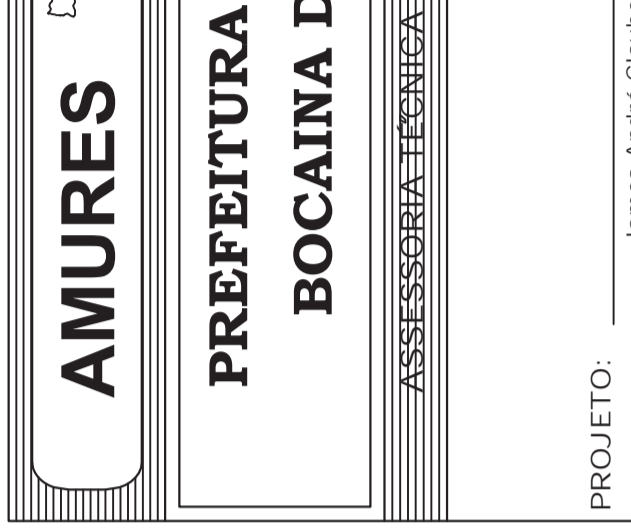
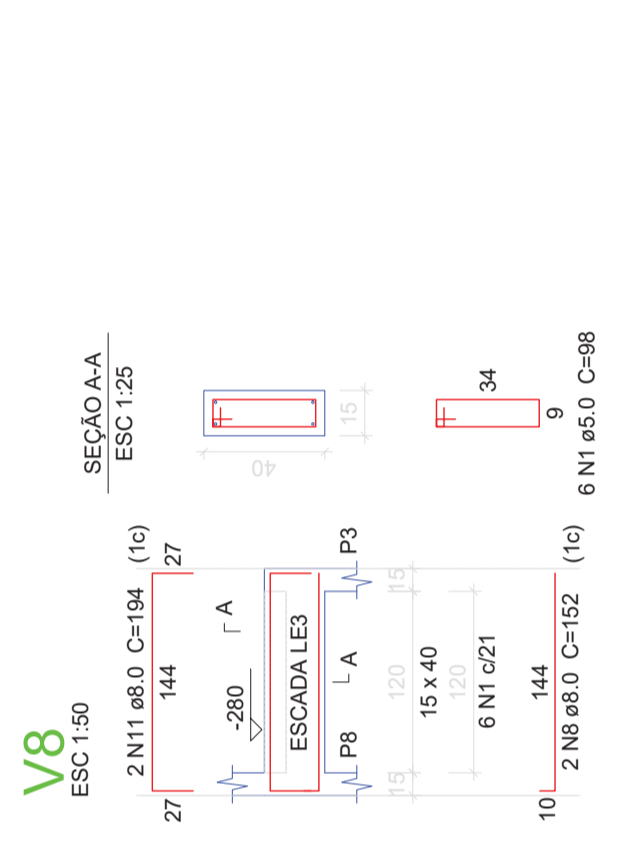
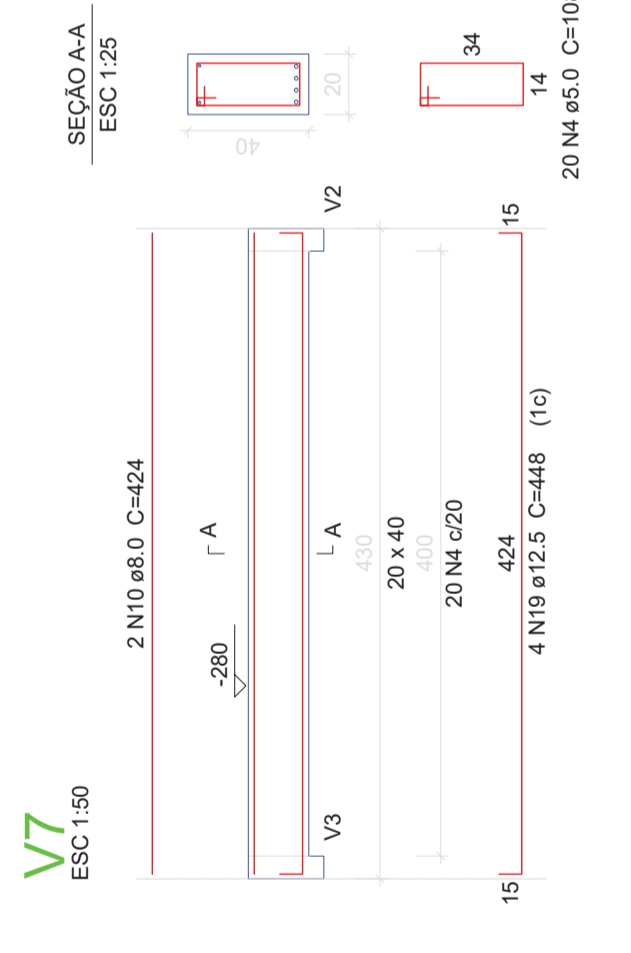
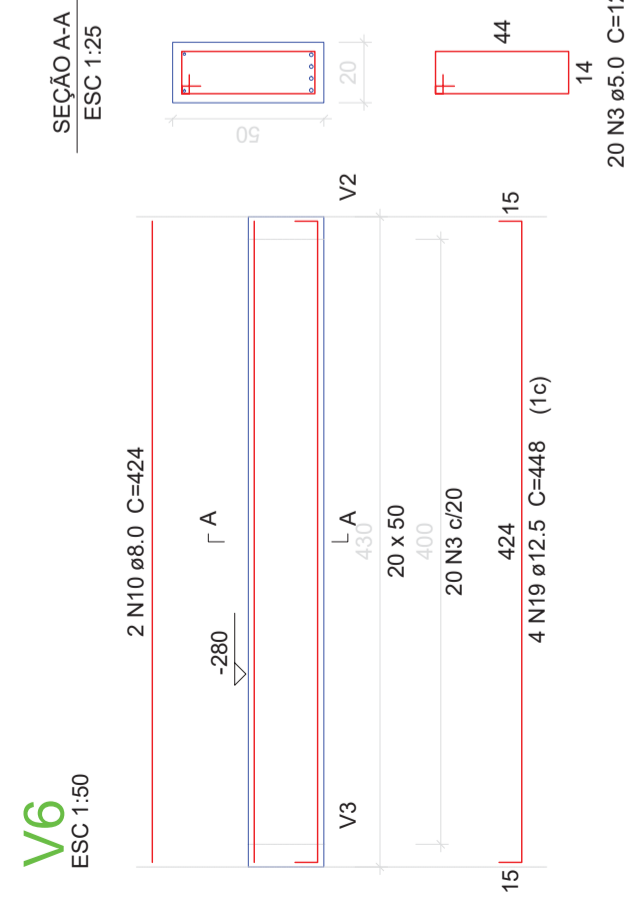
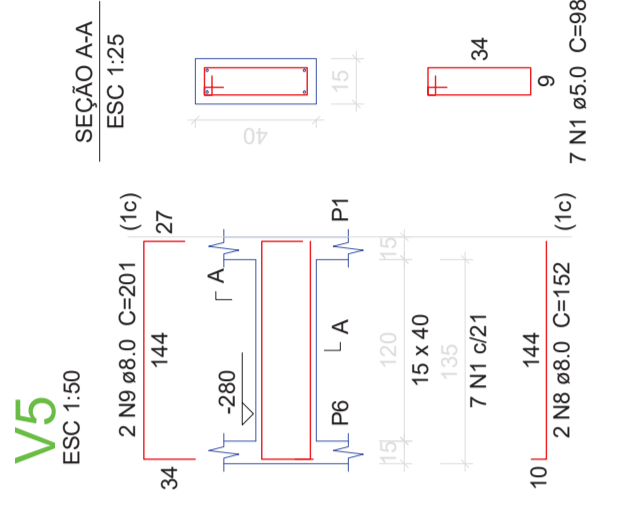
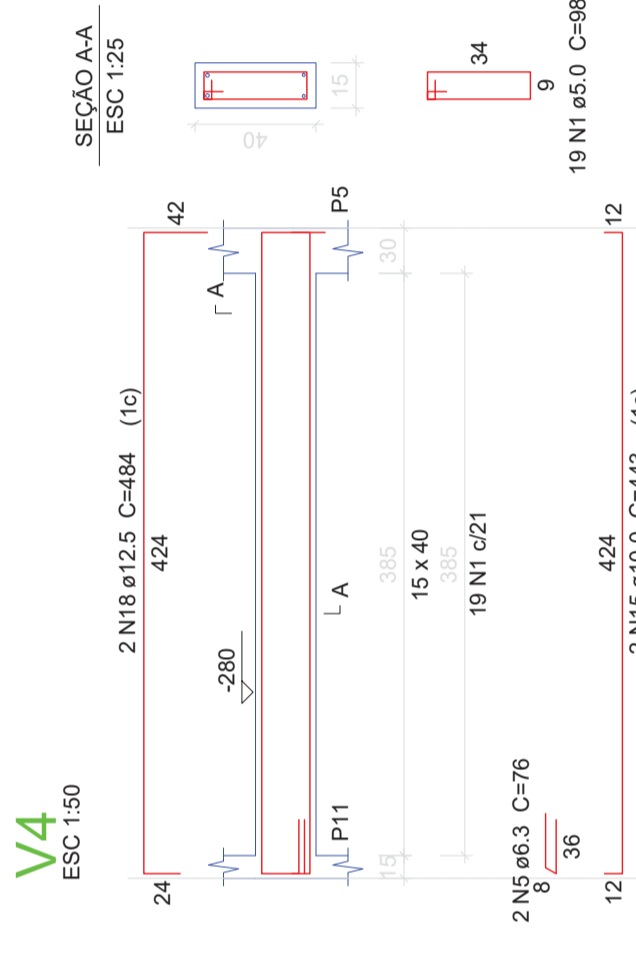
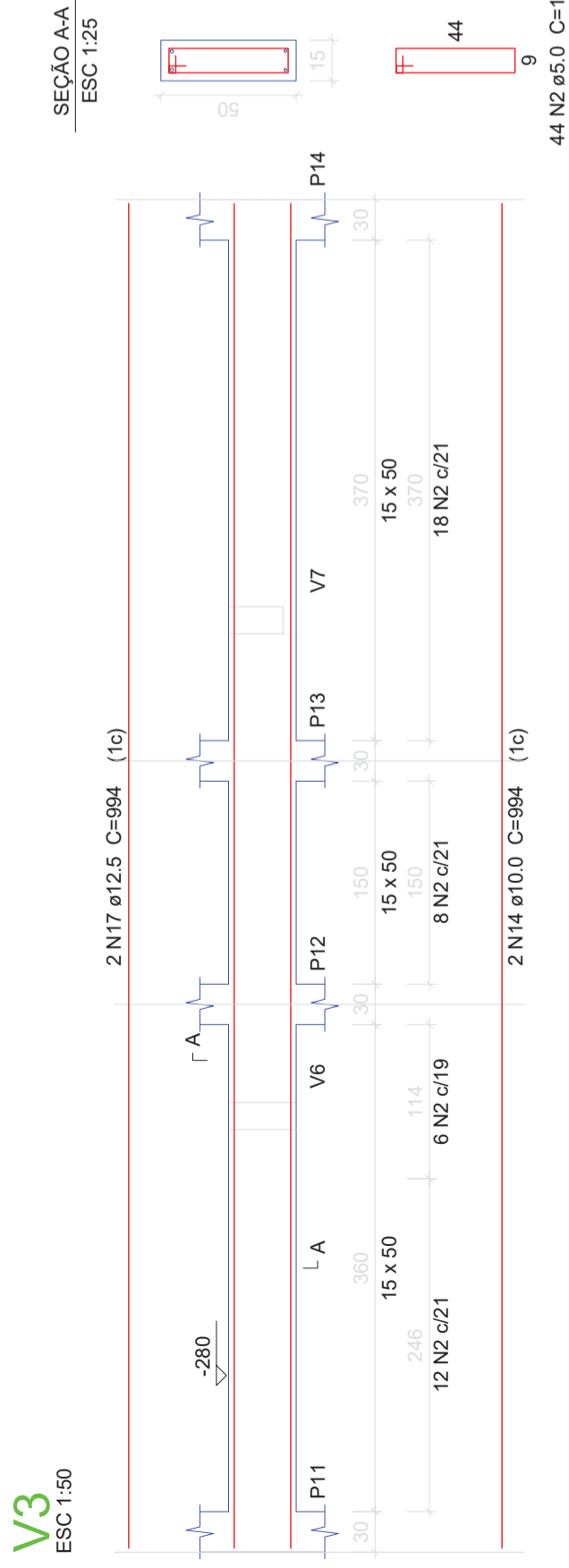
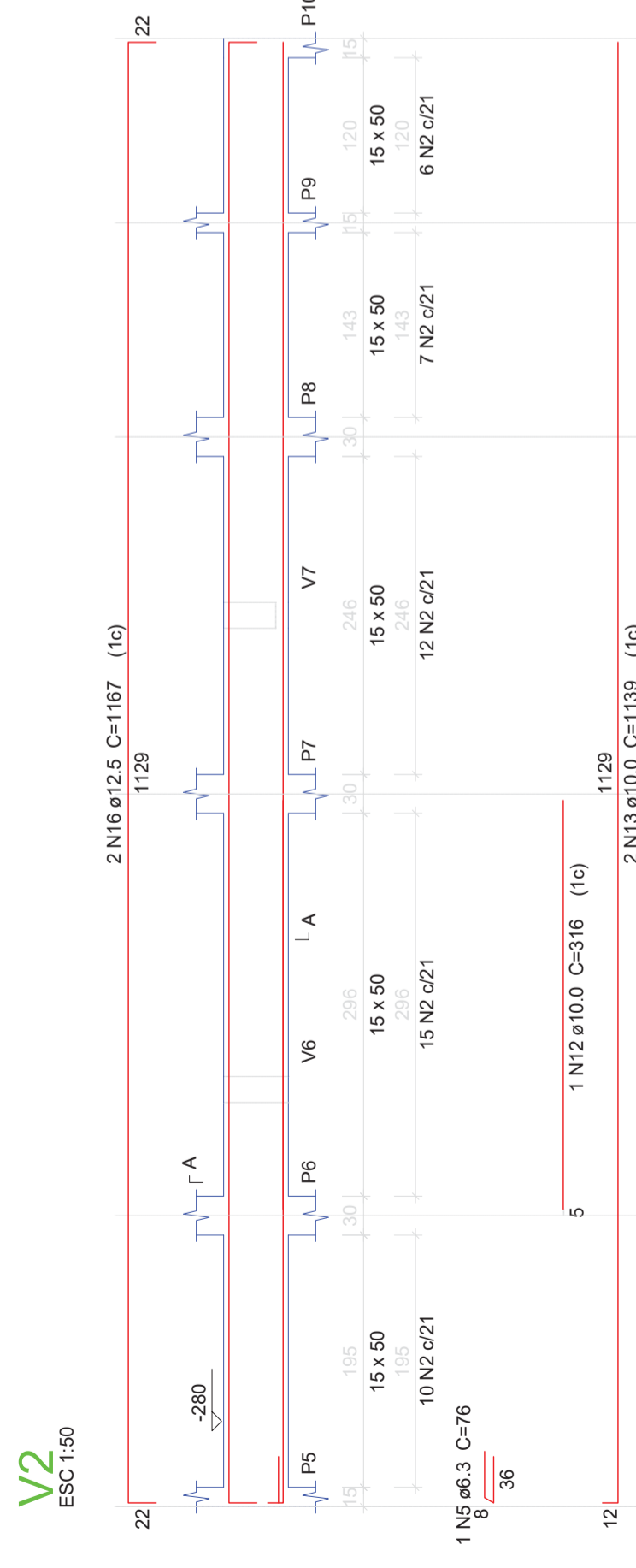
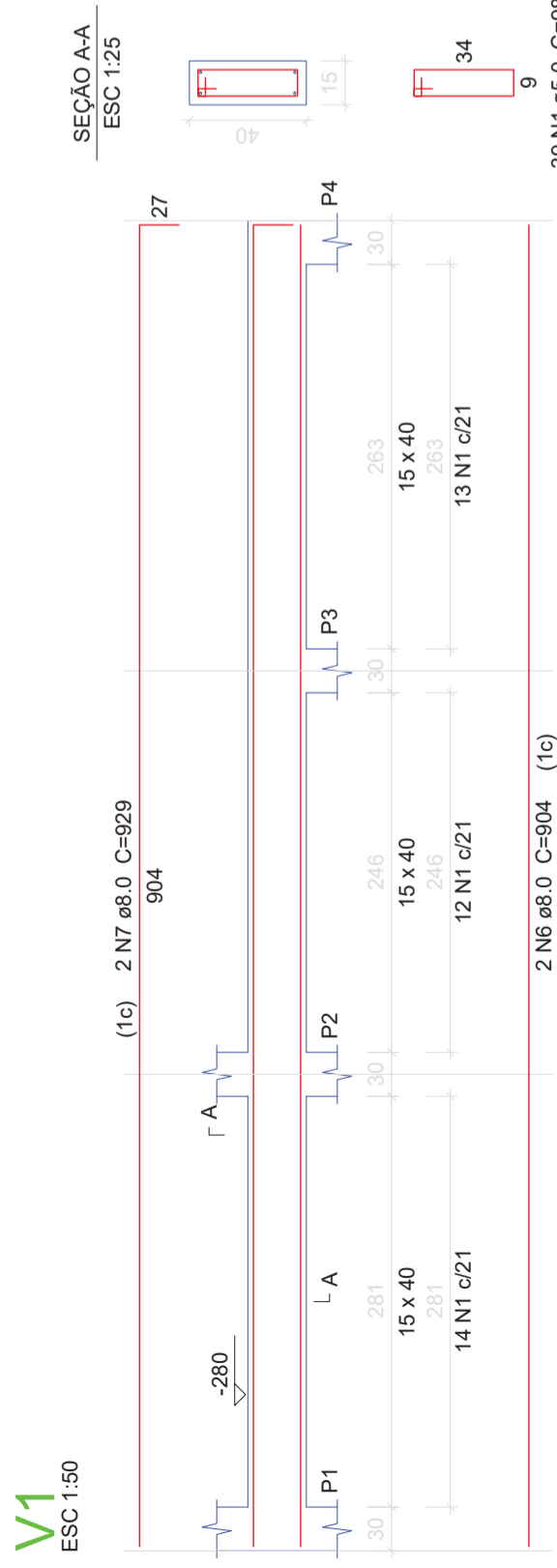
Relação do aço

AÇO	N	DIAM	Q	UNIT (cm)	C.TOTAL (cm)
CA60	1	5.0	71	98	6958
	2	5.0	94	118	11092
	3	5.0	20	128	2560
	4	5.0	20	108	2160
CA50	5	6.3	3	76	228
	6	8.0	2	904	1808
	7	8.0	2	929	1858
	8	8.0	4	152	608
	9	8.0	2	201	402
	10	8.0	4	424	1696
	11	8.0	2	194	388
	12	10.0	1	316	316
	13	10.0	2	1139	2278
	14	10.0	2	994	1988
	15	10.0	2	443	886
	16	12.5	2	1167	2334
	17	12.5	2	994	1988
	18	12.5	2	484	968
	19	12.5	8	448	3584

Resumo do aço

AÇO	DIAM	C.TOTAL (m)	PESO (kg)
CA50	6.3	2.3	0.6
	8.0	67.6	26.7
	10.0	54.7	33.7
	12.5	88.8	85.5
CA60	5.0	227.7	35.1
PESO TOTAL			
CA50		146.4	
CA60		35.1	

Vol. de concreto total (C-25) = 3.36 m³
Área de forma total = 49.59 m²



AMURES

ASSOCIAÇÃO DE MUNICÍPIOS
DA REGIÃO SERRANA

**PREFEITURA MUNICIPAL DE
BOCAINA DO SUL - SC**

4

OPERAÇÃO DE OBRAS

**Casa de Acolhimento para
Crianças e Jovens**

Projeto Estrutural

Detalhamento das vigas baldrames -
Subsolo

Área total: 277,35m²

PROJETO: James André Clauberg
Eng. Civil - CREA 45.160-6

PREFEITO: Luiz Carlos Schmulder

DESENHO: **Matheus Lorenzetti Casagrande**

Escala: Indicada

DATA: 03/2020