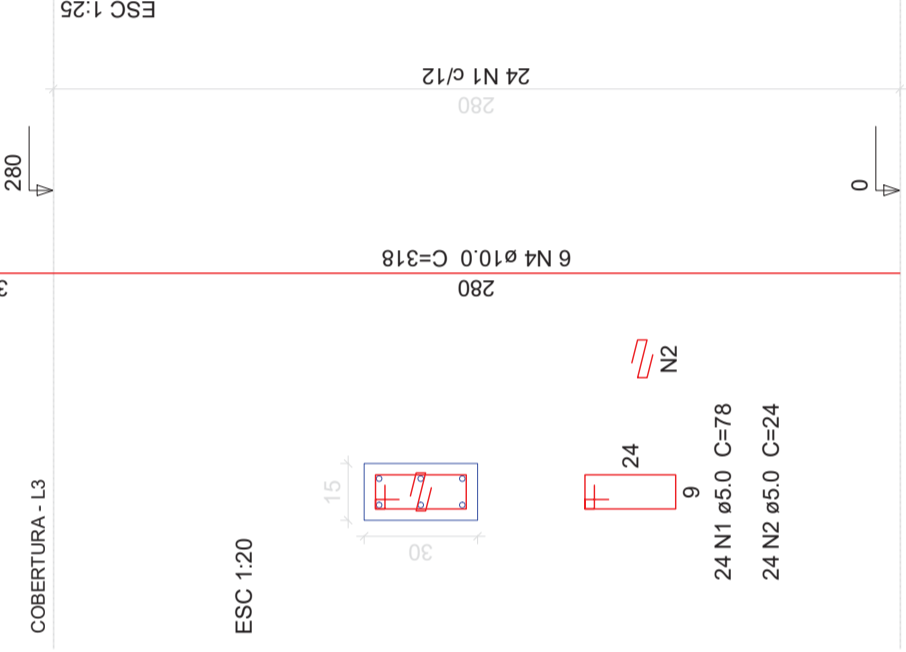
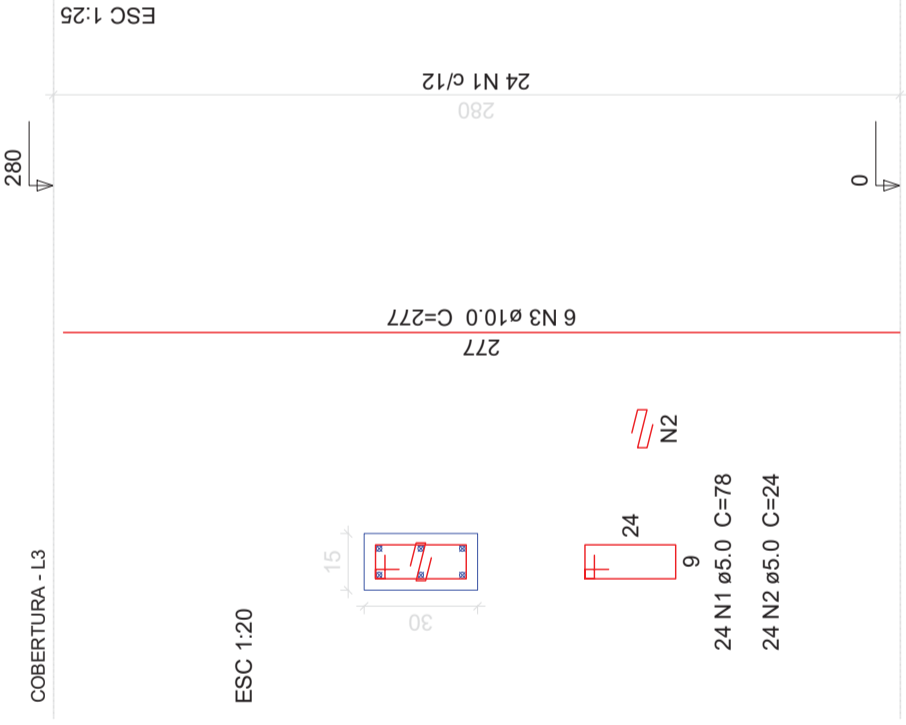
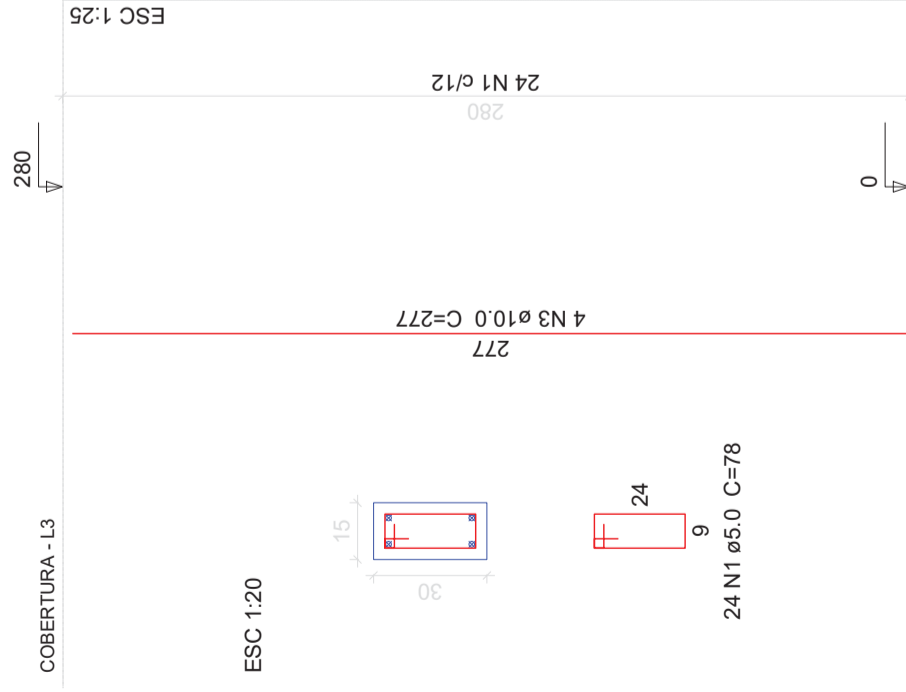


P5=P6=P7=P8=P9=P11=P12=P14=P15=P16=P17
 =P18=P19=P20=P25=P26=P27=P28=P29=P30
 =P32=P33=P34

P13=P31

P21=P23



Relação do aço

23XP5 2XP13 2XP21
 P22 P24 4XP35

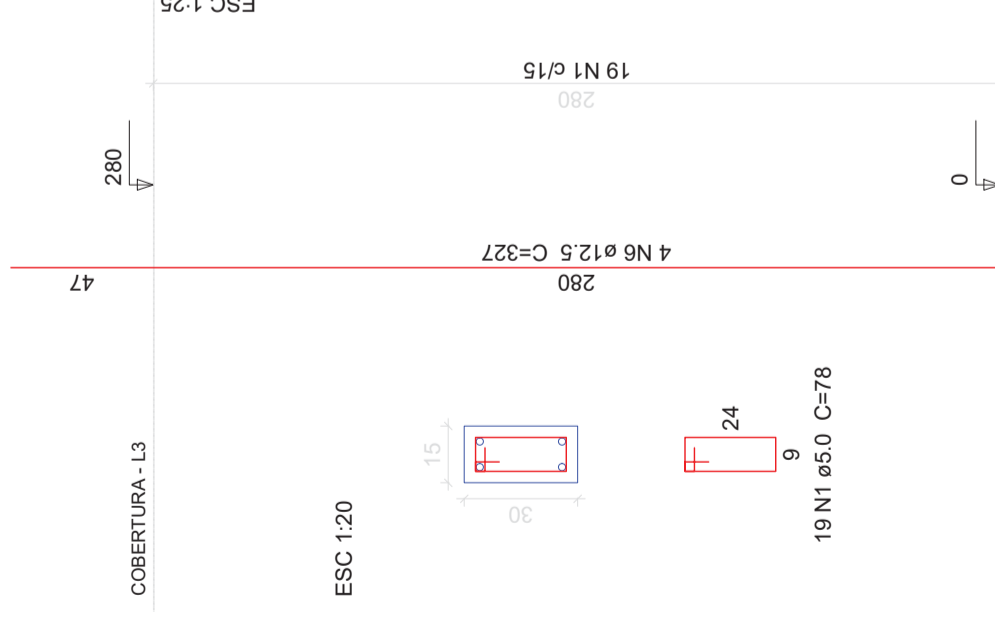
AÇO	N	DIAM	Q	UNIT (cm)	C.TOTAL (cm)
CA60	1	5.0	771	78	601.38
CA60	2	5.0	96	24	2304
CA50	3	10.0	104	277	28808
CA50	4	10.0	16	318	5088
CA50	5	10.0	16	233	3728
CA50	6	12.5	4	327	1308

Resumo do aço

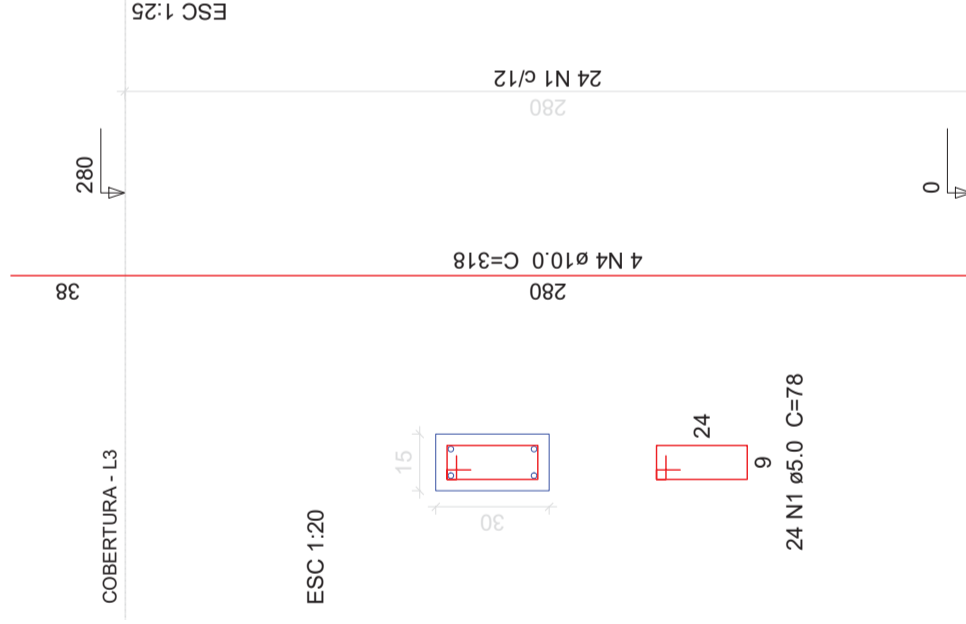
AÇO	DIAM	C.TOTAL (m)	PESO (kg)
CA50	10.0	376.3	232
CA50	12.5	13.1	12.6
CA60	5.0	624.5	96.2
PESO TOTAL			
CA50	244.6		
CA60	96.2		

Vol. de concreto total (C-25) = 4.08 m³
 Área de forma total = 81.58 m²

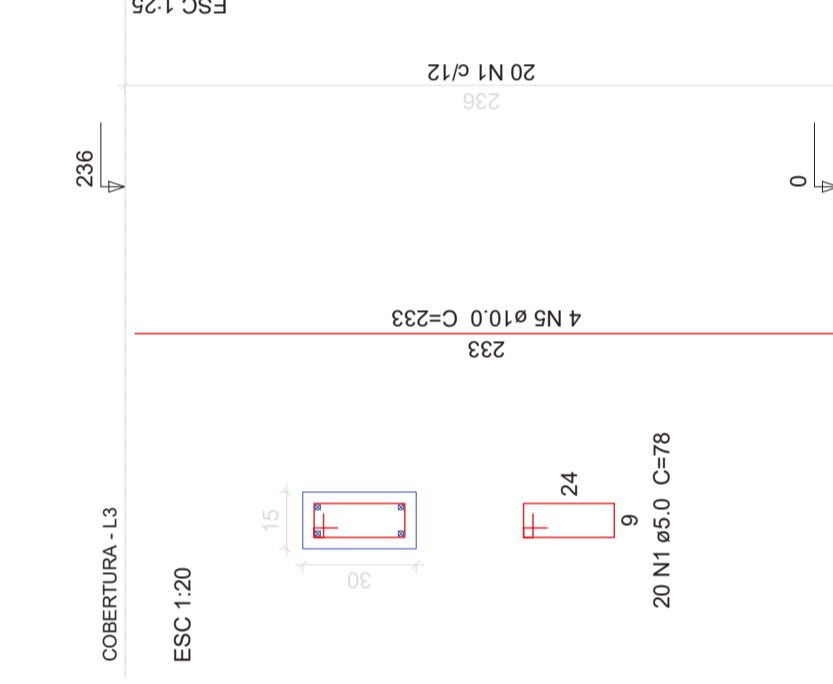
P22



P24



P35=P36=P37=P38



AMURES



ASSOCIAÇÃO DE MUNICÍPIOS
 DA REGIÃO SERRANA

PREFEITURA MUNICIPAL DE
 BOCAINA DO SUL - SC

12

ASSESSORIA TÉCNICA

OBRA

Casa de Acolhimento para
 Crianças e Jovens

Projeto Estrutural

Detalhamento pilares - Pav. Cobertura

Área total: 277,35m²

PROJETO: James André Clauberg
 Eng. Civil - CREA 45.160-6

PREFEITO: Luiz Carlos Schmuler

DESENHO: Matheus Lorenzetti Casagrande

Escala: Indicada

DATA: 03/2020