

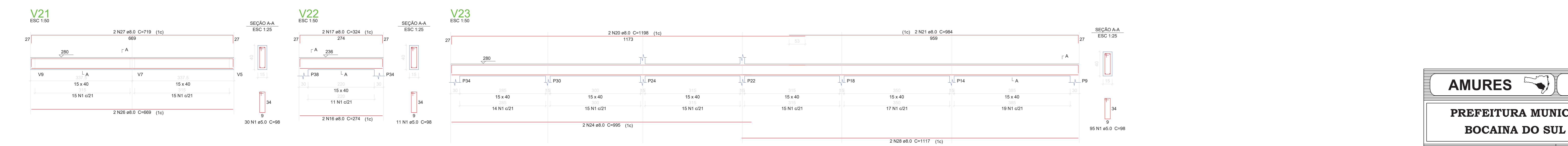
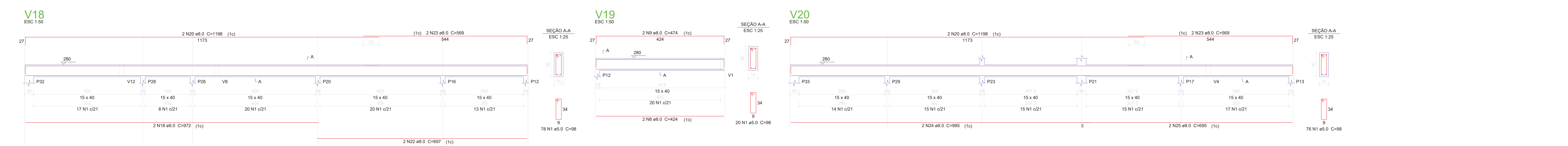
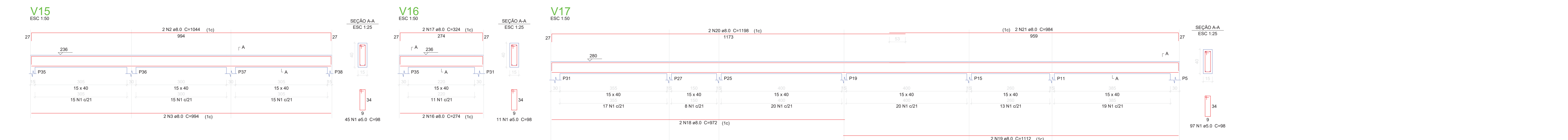
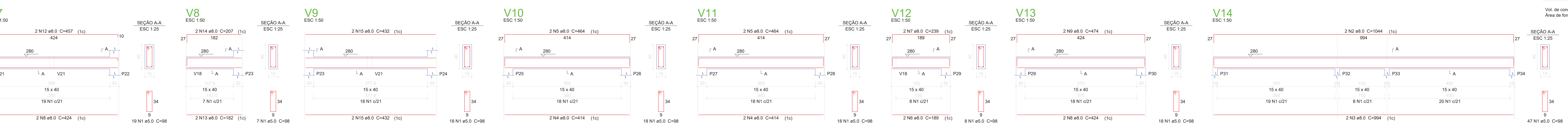
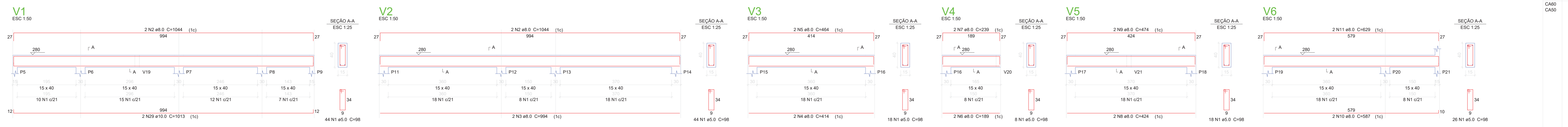
Relação do aço


AÇO	N	DIAM	Q	UNIT	C.TOTAL
V1				(cm)	
V2				(cm)	
V3				(cm)	
V4				(cm)	
V5				(cm)	
V6				(cm)	
V7				(cm)	
V8				(cm)	
V9				(cm)	
V10				(cm)	
V11				(cm)	
V12				(cm)	
V13				(cm)	
V14				(cm)	
V15				(cm)	
V16				(cm)	
V17				(cm)	
V18				(cm)	
V19				(cm)	
V20				(cm)	
V21				(cm)	
V22				(cm)	
V23				(cm)	

Resumo do aço

AÇO	DIAM	C.TOTAL	PESO
CA50	8.0	694.6	274.1
CA60	10.0	20.3	12.5
CA60	5.0	758.6	116.9
PESO TOTAL			
CA50		286.6	
CA60		116.9	

Vol. de concreto total (C-25) = 10.4 m³
Área de forma total = 164.99 m²





AMURES

ASSOCIAÇÃO DE MUNICÍPIOS DA REGIÃO SERRANA

PREFEITURA MUNICIPAL DE BOCAINA DO SUL - SC

ASSESSORIA TÉCNICA

13

OBRA

PROJETO: James André Claudberg
Eng. Civil - CREA 45.1666

PREFEITO: Luis Carlos Schumler

DESENHO: Matheus Lorenzetti Casagrande

Projeto Estrutural

Detalhamento das vigas - Pav. cobertura

Área total: 277,35m²

Escala: Indicada

DATA: 03/2020