

Relação do aço

P1	3xP2	P3
3xP4	3xP6	P7
P9	P10	P11
P12	P13	P14
P15	P17	P18
2xP20	P22	P23
P24	P25	P26
P27	P30	P31
P32	S1	4xS5
S7	S9	2xS10
S11	S12	S13
S14	2xS15	3xS16
S18	2xS20	S23
S24	S25	S26
S27	3xS29	S30
S31	S32	

AÇO	N	DIAM (mm)	QUANT (Barras)	UNIT (cm)	C.TOTAL (cm)
CA60	1	5.0	159	82	13038
	2	5.0	32	72	2304
	3	5.0	26	25	650
	4	5.0	27	92	2484
	5	5.0	21	30	630
CA50	6	6.3	9	63	567
	7	6.3	42	98	4116
	8	6.3	73	113	8249
	9	6.3	16	108	1728
	10	6.3	7	123	861
	11	6.3	20	118	2360
	12	6.3	40	128	5120
	13	6.3	22	103	2266
	14	6.3	10	118	1180
	15	6.3	26	113	2938
	16	8.0	12	87	1044
	17	8.0	21	72	1512
	18	8.0	6	82	492
	19	8.0	6	82	492
	20	8.0	7	102	714
	21	8.0	8	82	656
	22	8.0	18	92	1656
	23	8.0	8	107	856
	24	8.0	8	112	896
	25	8.0	11	112	1232
	26	8.0	8	127	1016
	27	8.0	13	117	1521
	28	8.0	9	97	873
	29	8.0	12	112	1344
	30	8.0	39	122	4758
	31	8.0	22	137	3014
	32	8.0	17	127	2159
	33	8.0	13	142	1846
	34	10.0	6	67	402
	35	10.0	4	VAR	VAR
	36	10.0	4	VAR	VAR
	37	10.0	16	VAR	VAR
	38	10.0	7	136	952
	39	10.0	27	126	3402
	40	10.0	24	141	3384
	41	10.0	9	156	1404
	42	10.0	11	141	1551
	43	10.0	32	151	4832
	44	10.0	26	161	4186
	45	12.5	8	VAR	VAR
	46	12.5	4	VAR	VAR
	47	12.5	8	VAR	VAR
	48	12.5	10	83	830
	49	12.5	16	VAR	VAR
	50	12.5	64	VAR	VAR
	51	12.5	6	VAR	VAR
	52	12.5	6	VAR	VAR
	53	12.5	4	VAR	VAR
	54	12.5	6	VAR	VAR
	55	12.5	4	VAR	VAR
	56	12.5	8	VAR	VAR

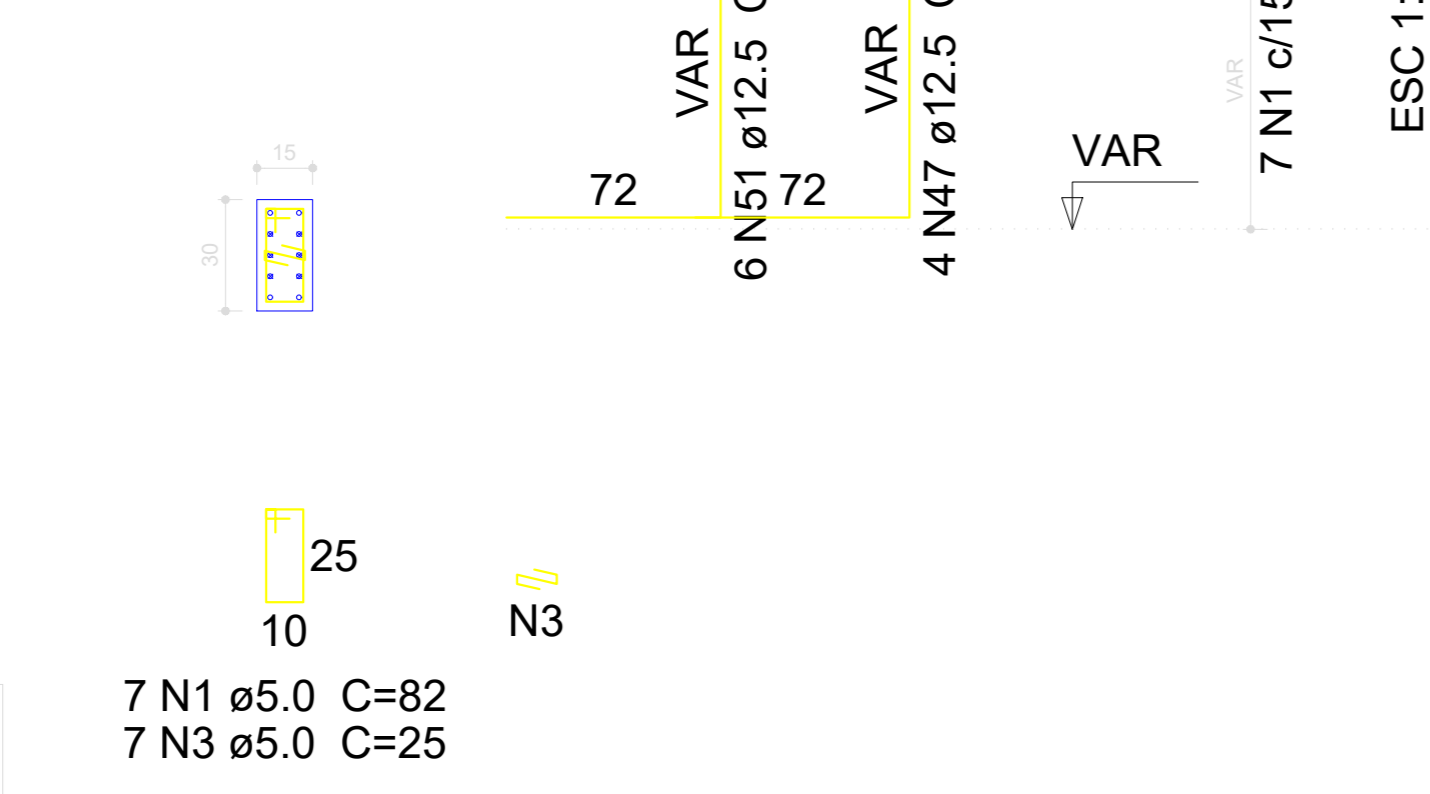
Resumo do aço

AÇO	DIAM (mm)	C.TOTAL (m)	PESO + 10 % (kg)
CA50	6.3	293.9	79.1
	8.0	260.9	113.2
	10.0	237.4	161
	12.5	229.6	243.3
CA60	5.0	191.1	32.4
PESO TOTAL (kg)			
CA50	596.6		
CA60	32.4		

Volume de concreto (C-30) = 1.3 m³
 Volume de concreto (C-20) = 8.83 m³
 Área de forma = 54.61 m²

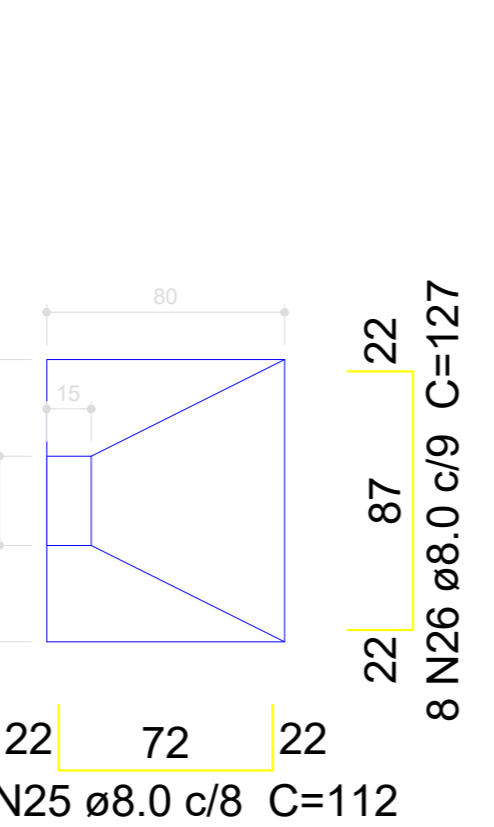
P25

TERREO - L1
ESC 1:20

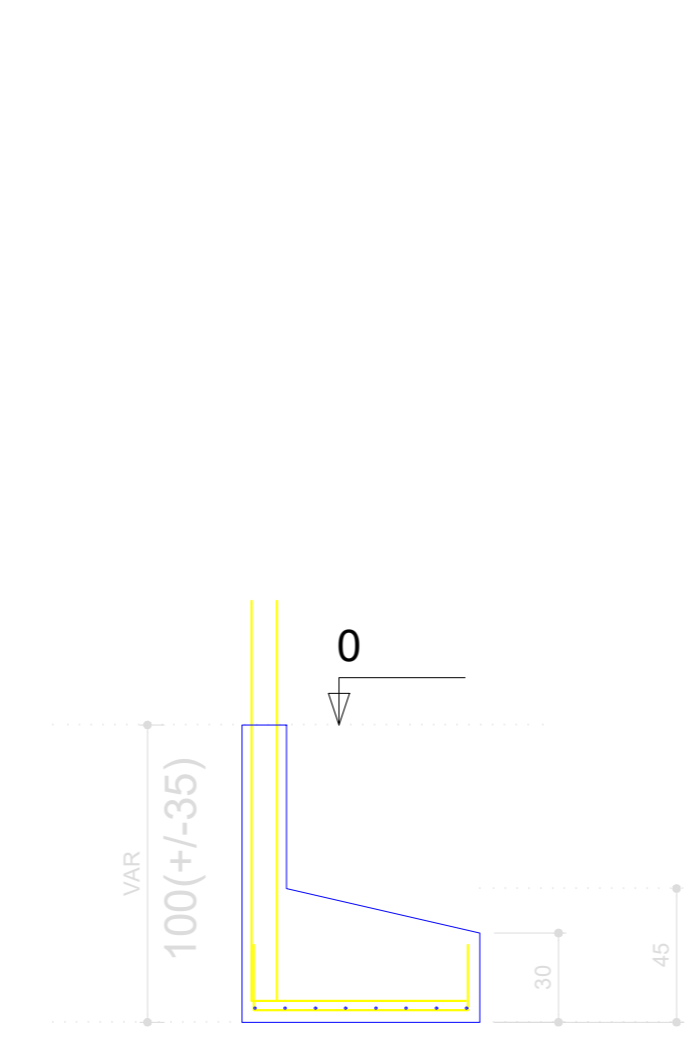


S25

PLANTA
ESC 1:25



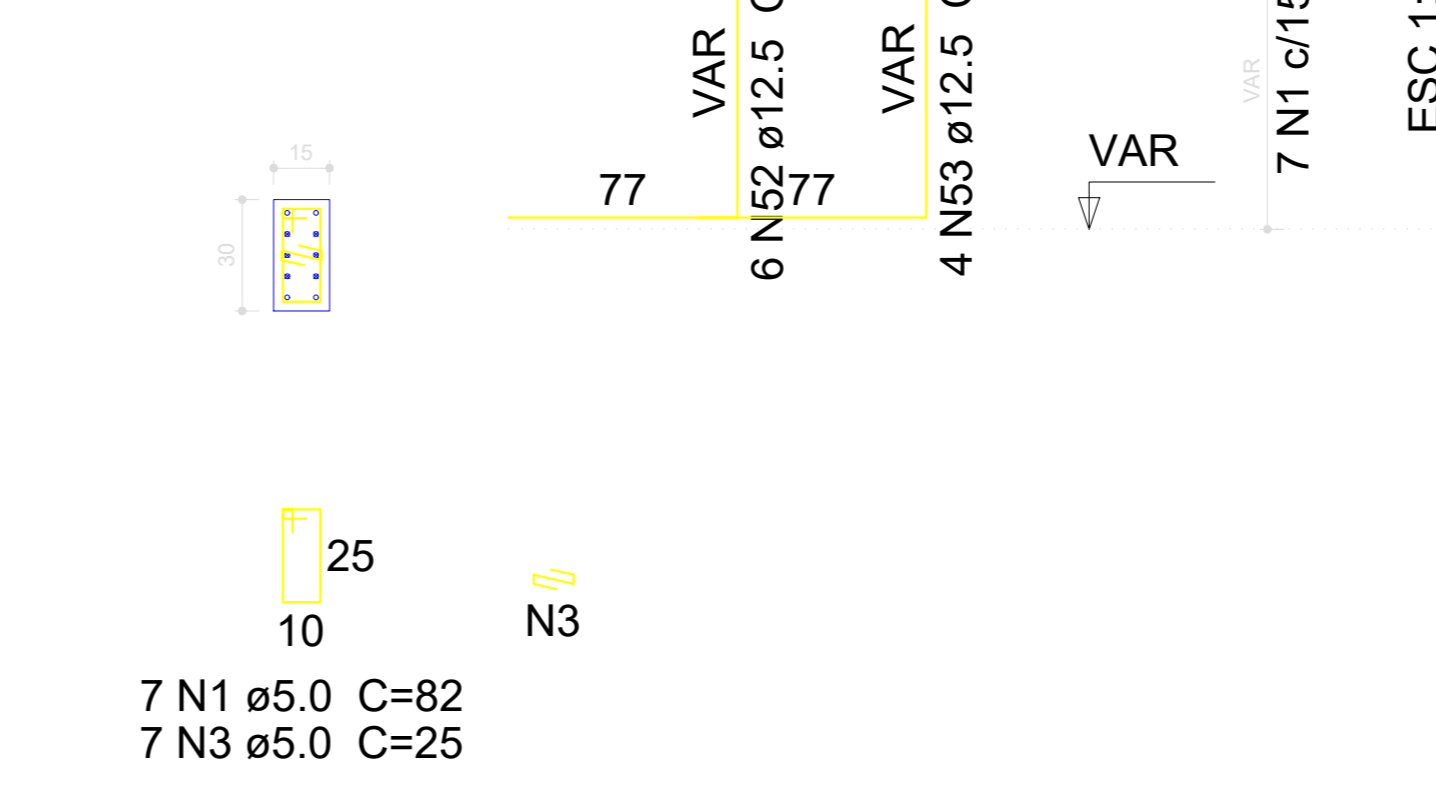
CORTE
ESC 1:25



Solo compactado sobre a sapata
peso específico > 1600.00 kgf/m³

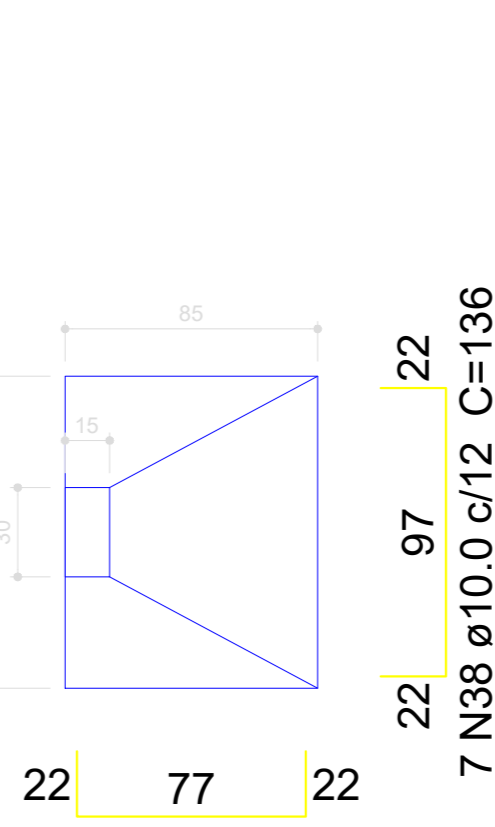
P31

TERREO - L1
ESC 1:20

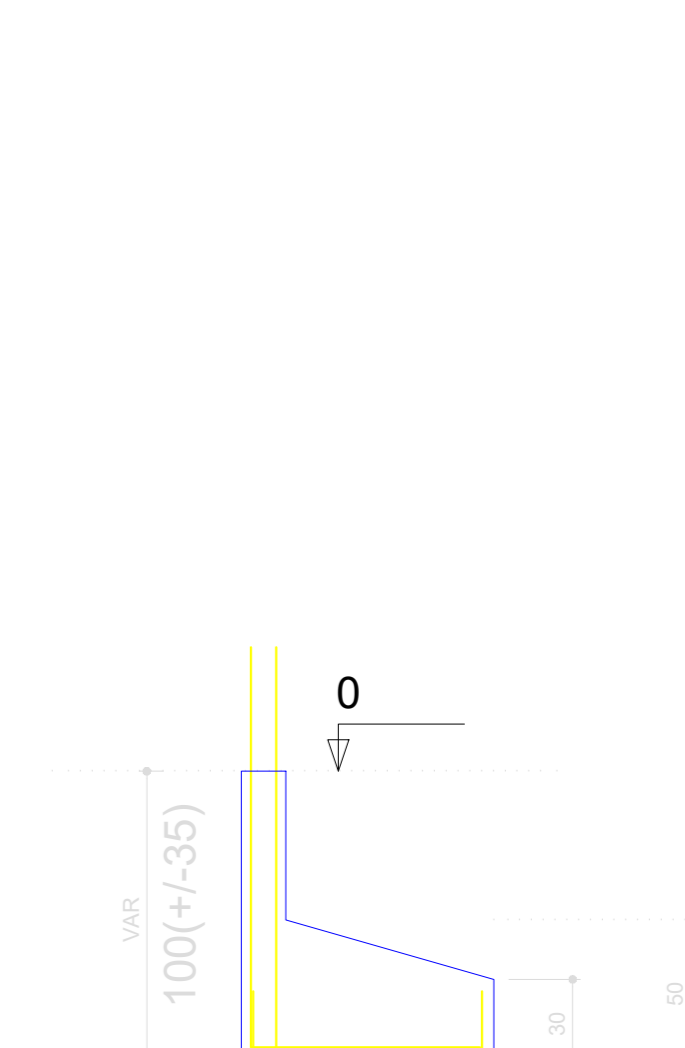


S31

PLANTA
ESC 1:25



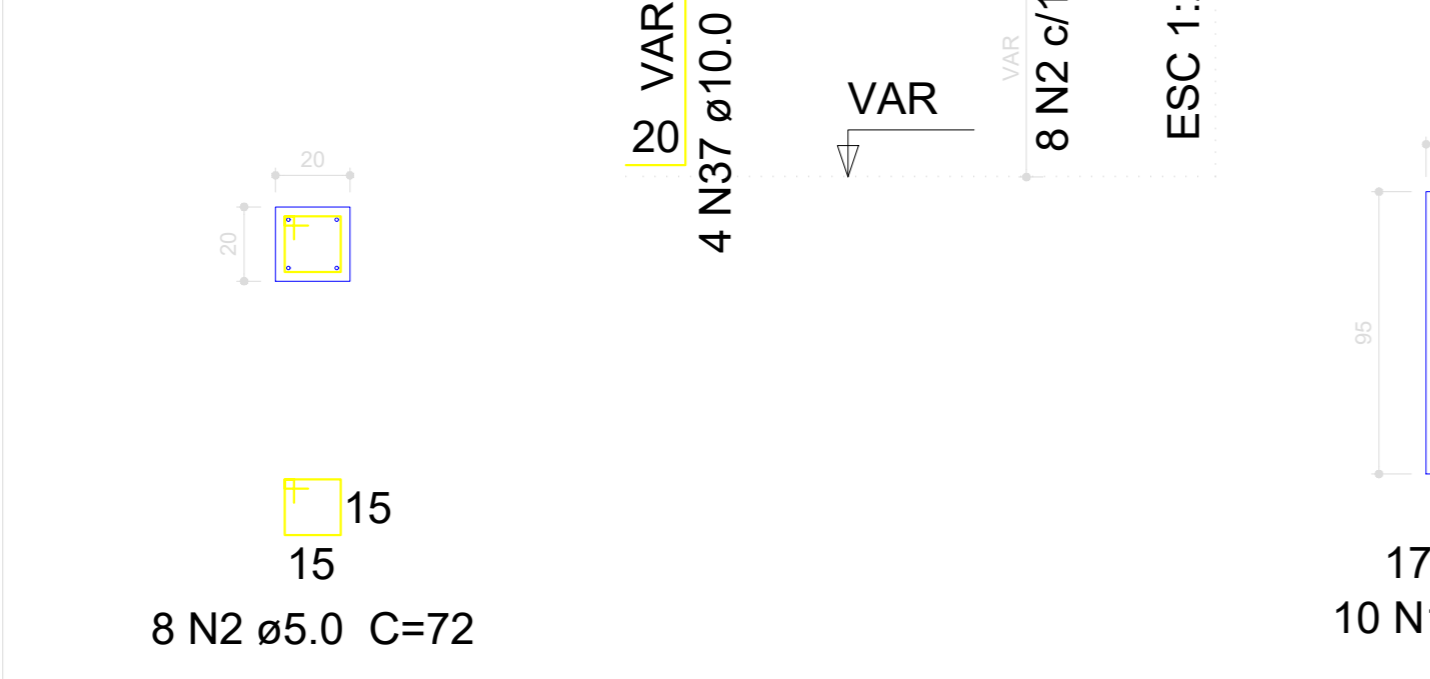
CORTE
ESC 1:25



Solo compactado sobre a sapata
peso específico > 1600.00 kgf/m³

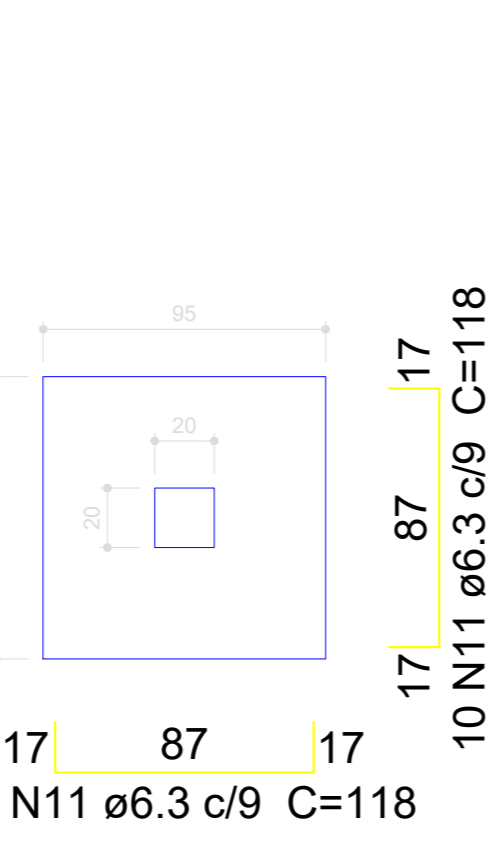
P13

TERREO - L1
ESC 1:20

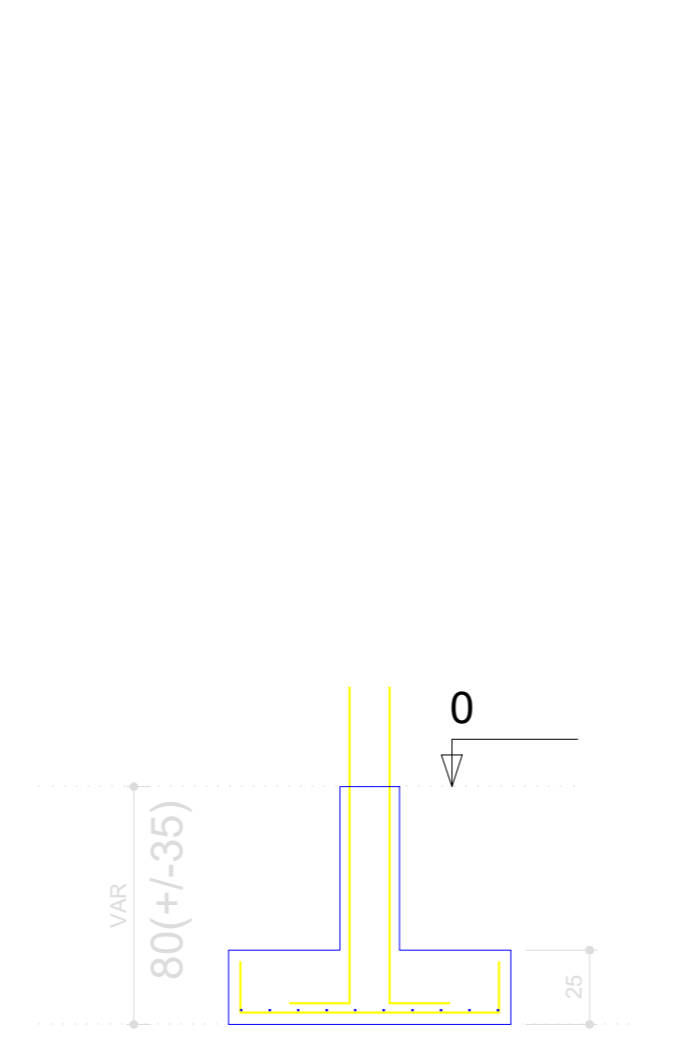


S13

PLANTA
ESC 1:25



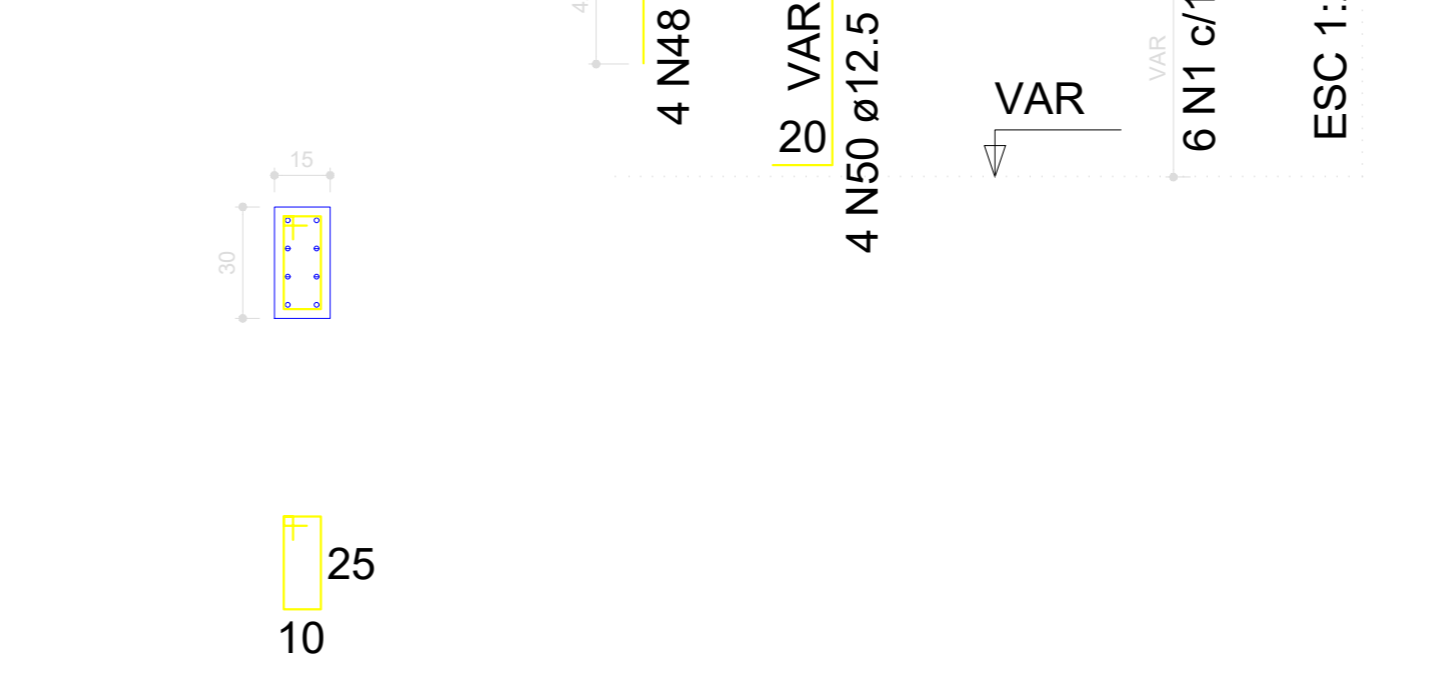
CORTE
ESC 1:25



Solo compactado sobre a sapata
peso específico > 1600.00 kgf/m³

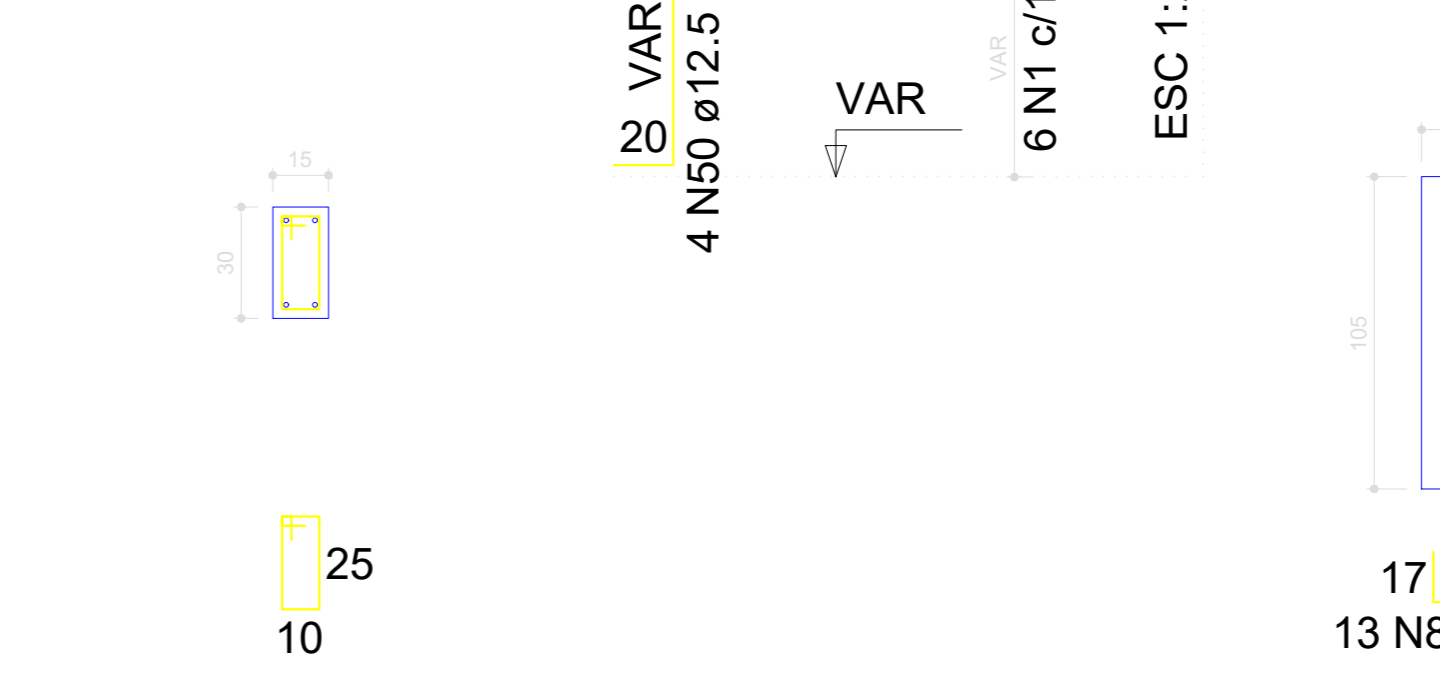
P22

TERREO - L1
ESC 1:20



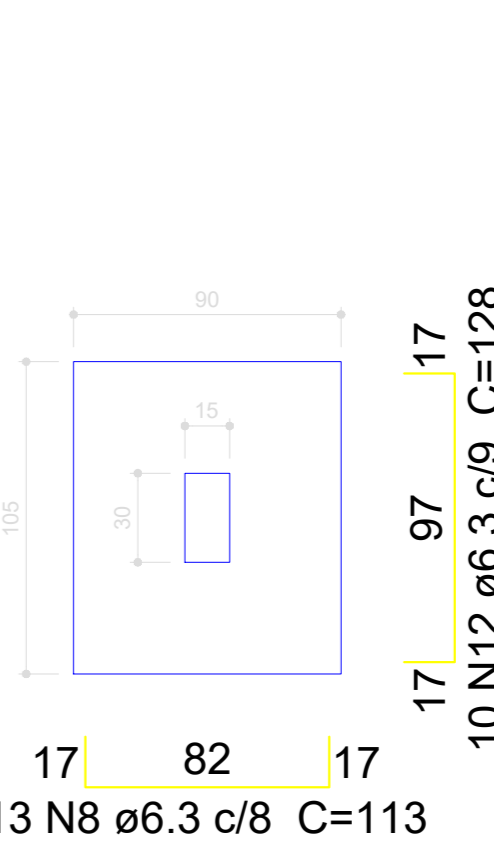
P4=P5=P8

TERREO - L1
ESC 1:20

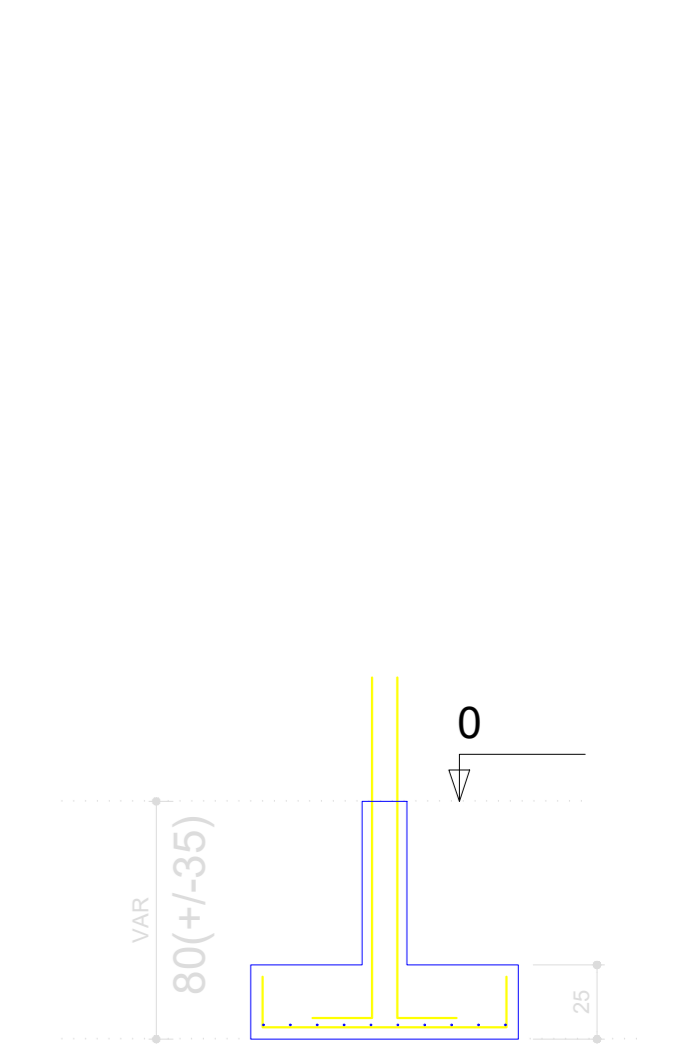


S4=S5=S8=S22

PLANTA
ESC 1:25



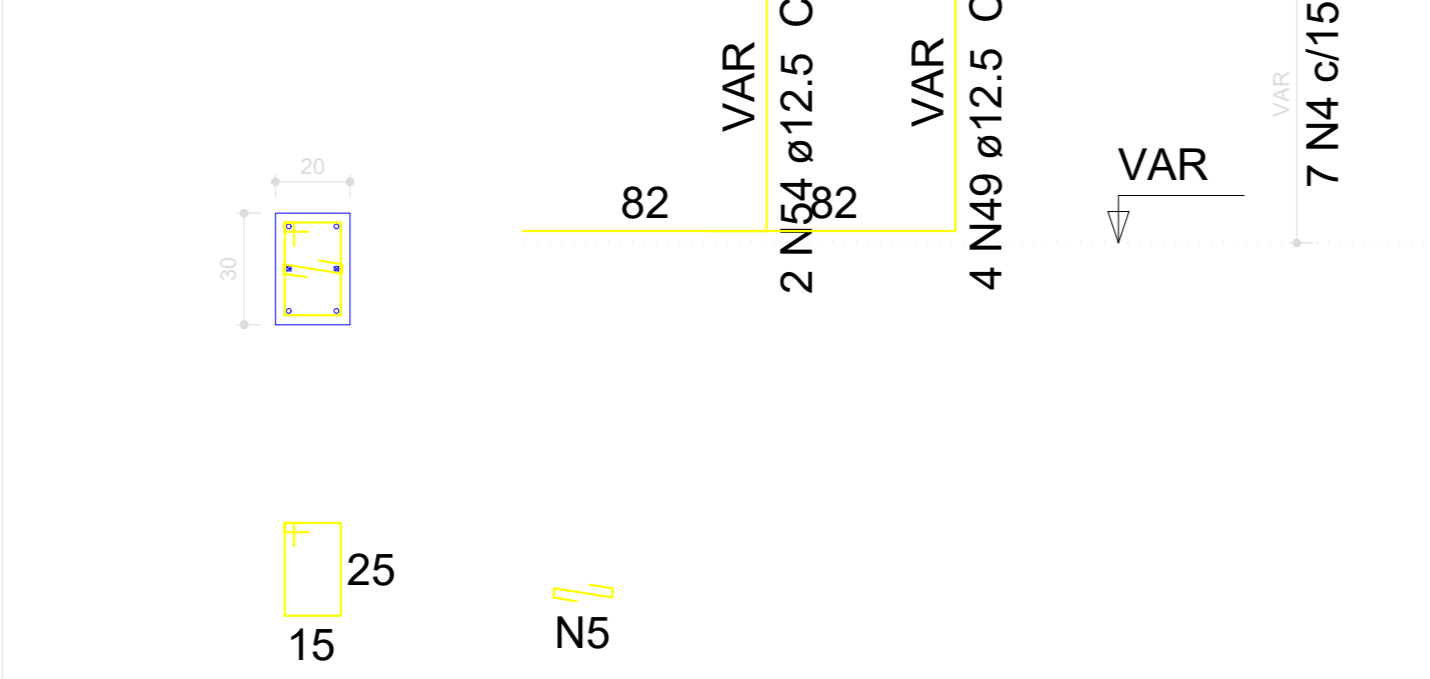
CORTE
ESC 1:25



Solo compactado sobre a sapata
peso específico > 1600.00 kgf/m³

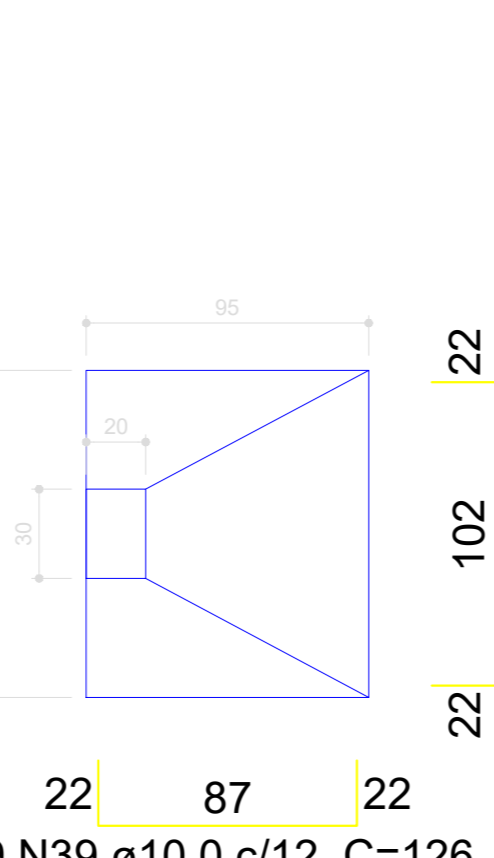
P2=P28=P29

TERREO - L1
ESC 1:20

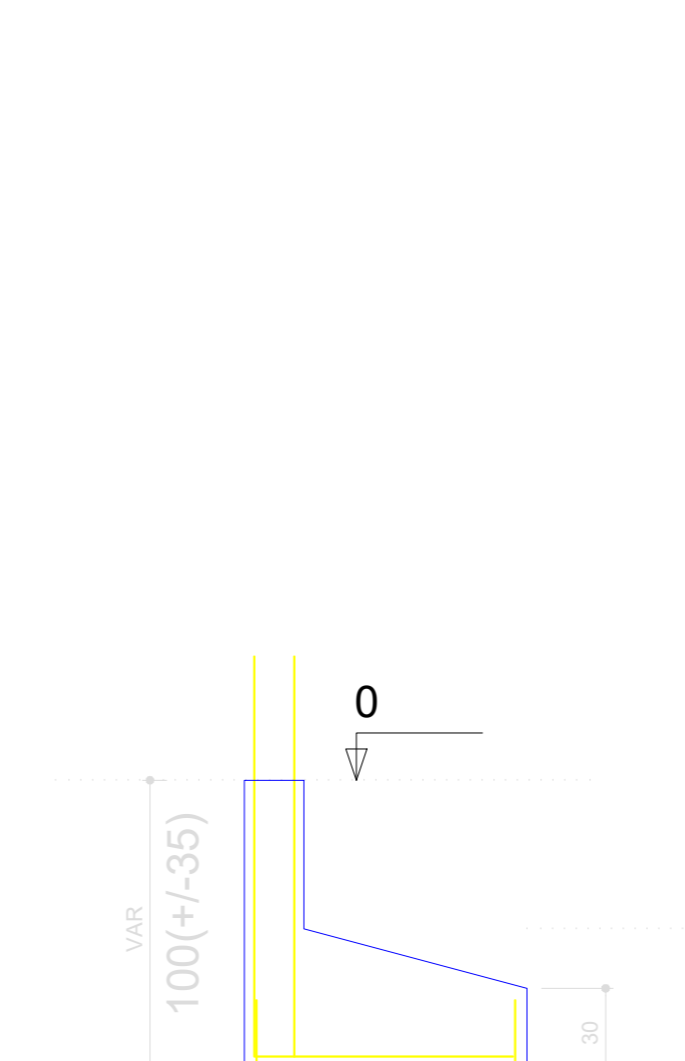


S2=S28=S29

PLANTA
ESC 1:25



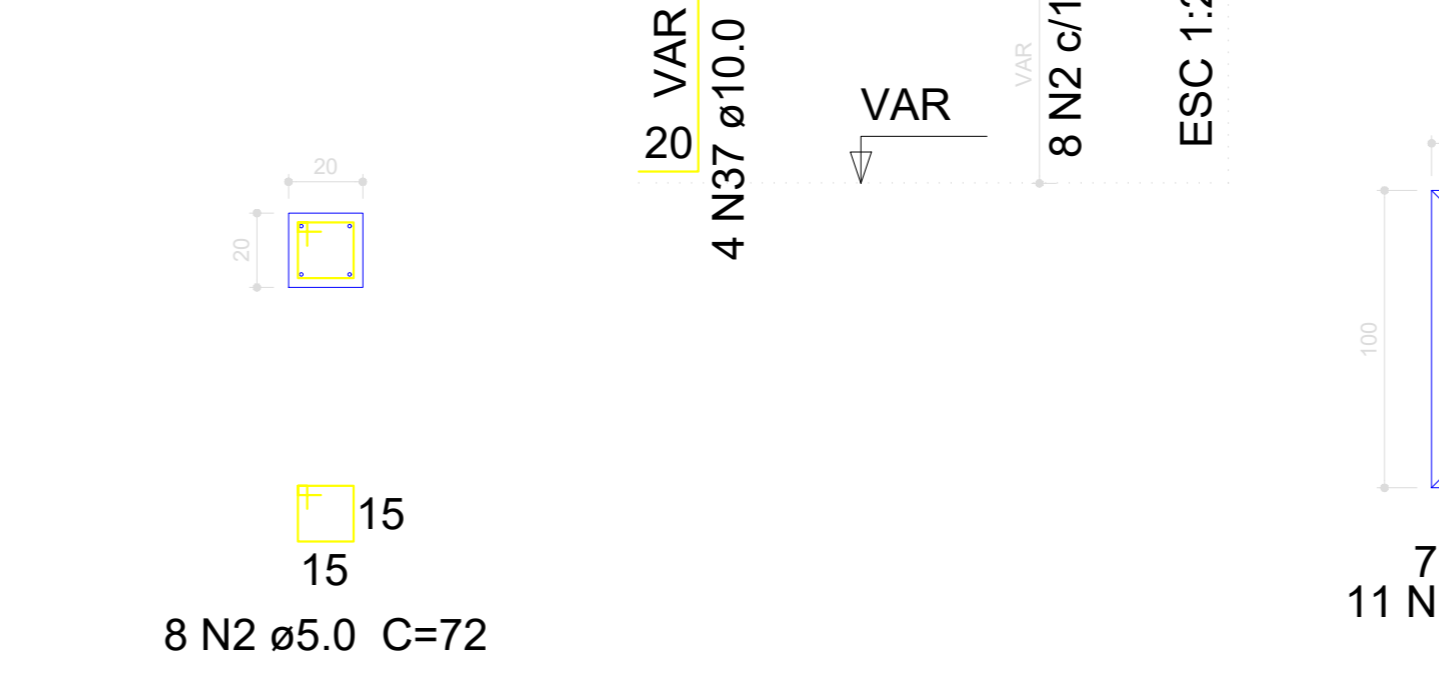
CORTE
ESC 1:25



Solo compactado sobre a sapata
peso específico > 1600.00 kgf/m³

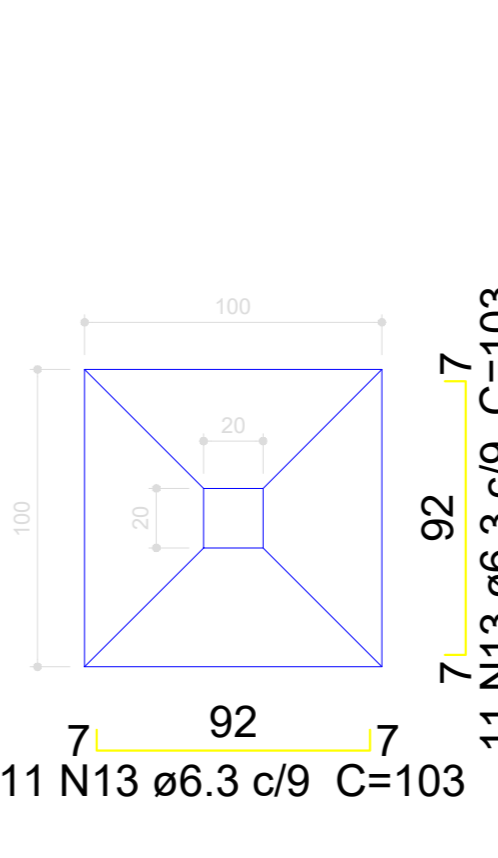
P11

TERREO - L1
ESC 1:20

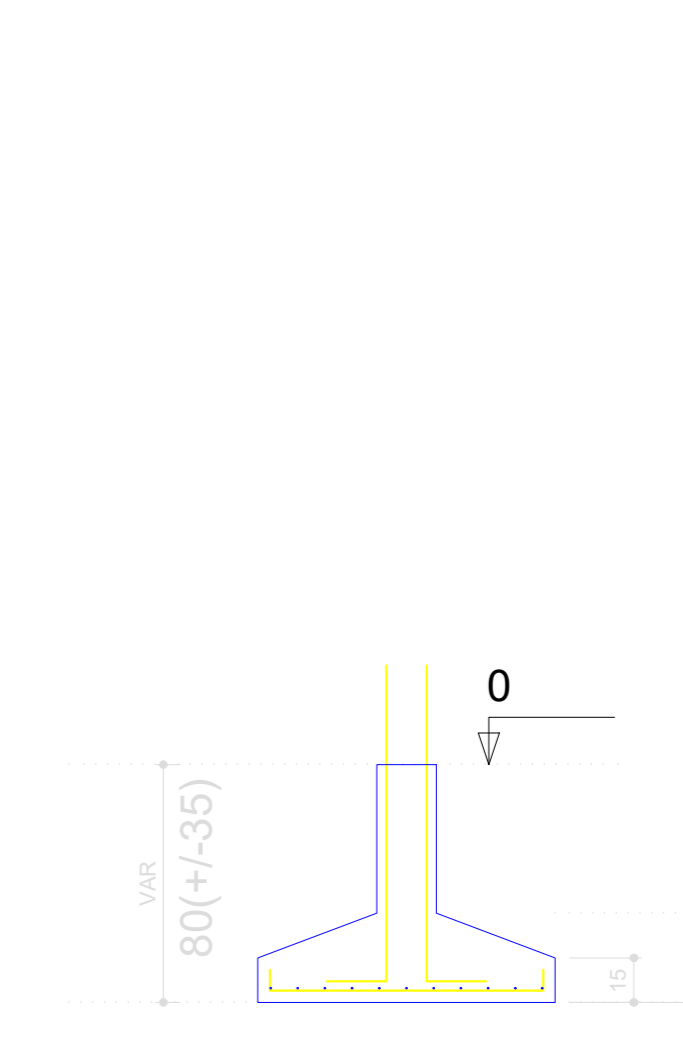


S11

PLANTA
ESC 1:25



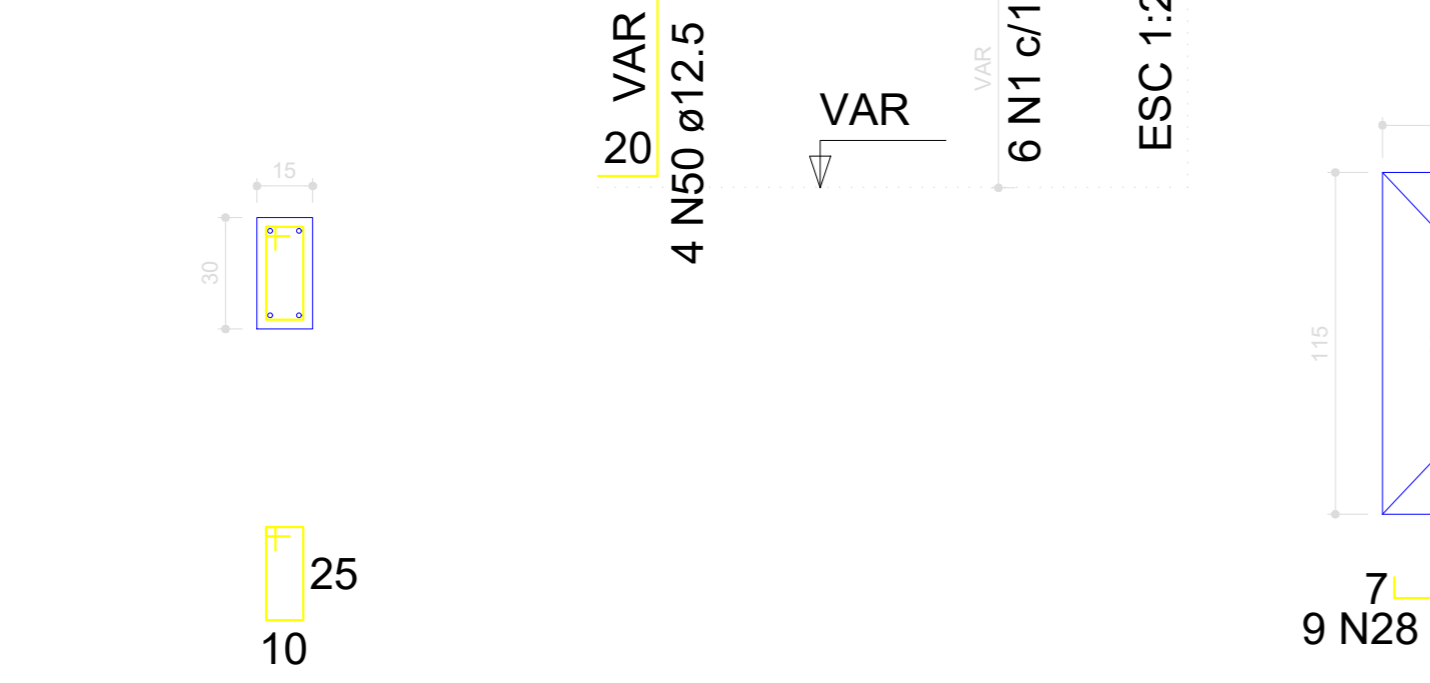
CORTE
ESC 1:25



Solo compactado sobre a sapata
peso específico > 1600.00 kgf/m³

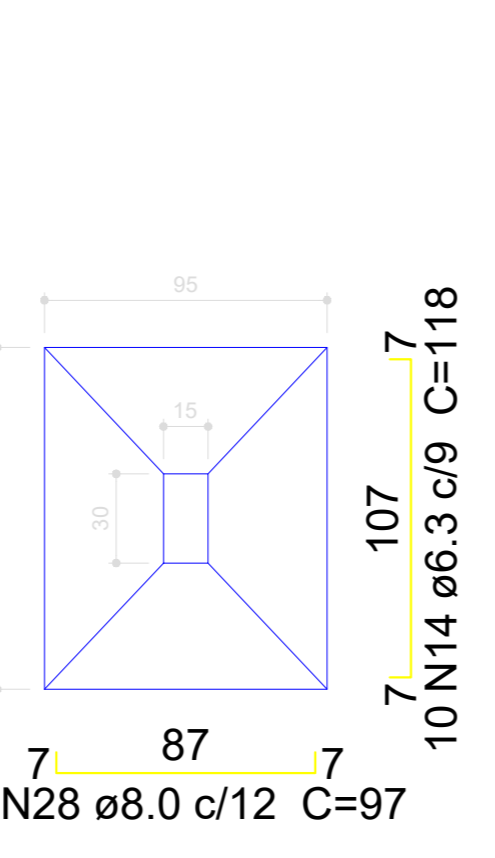
P7

TERREO - L1
ESC 1:20

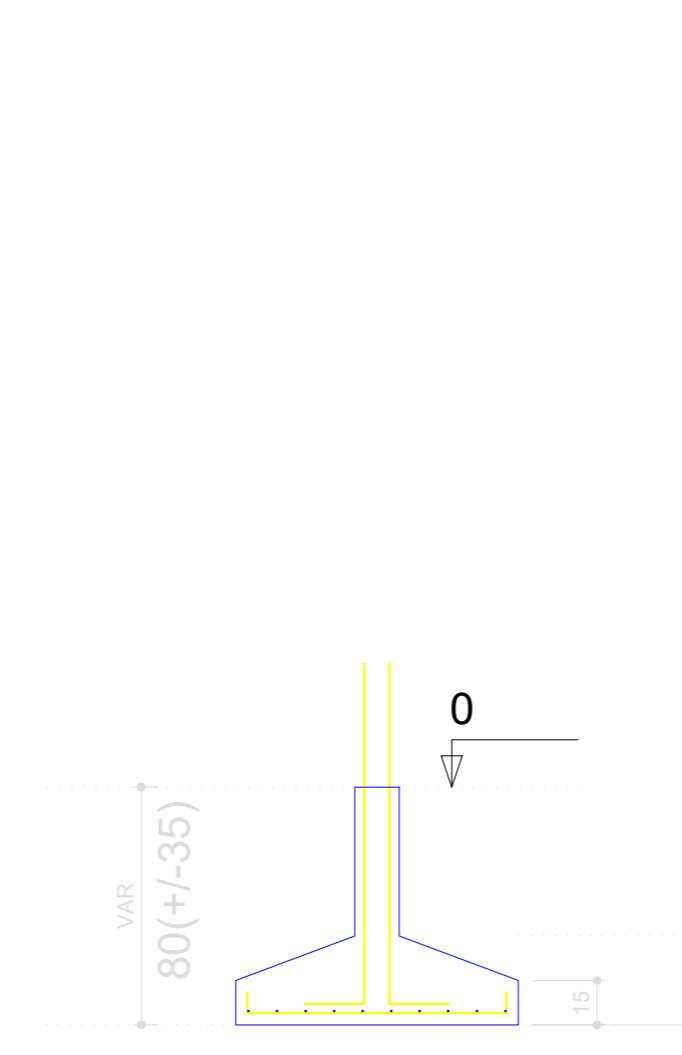


S7

PLANTA
ESC 1:25



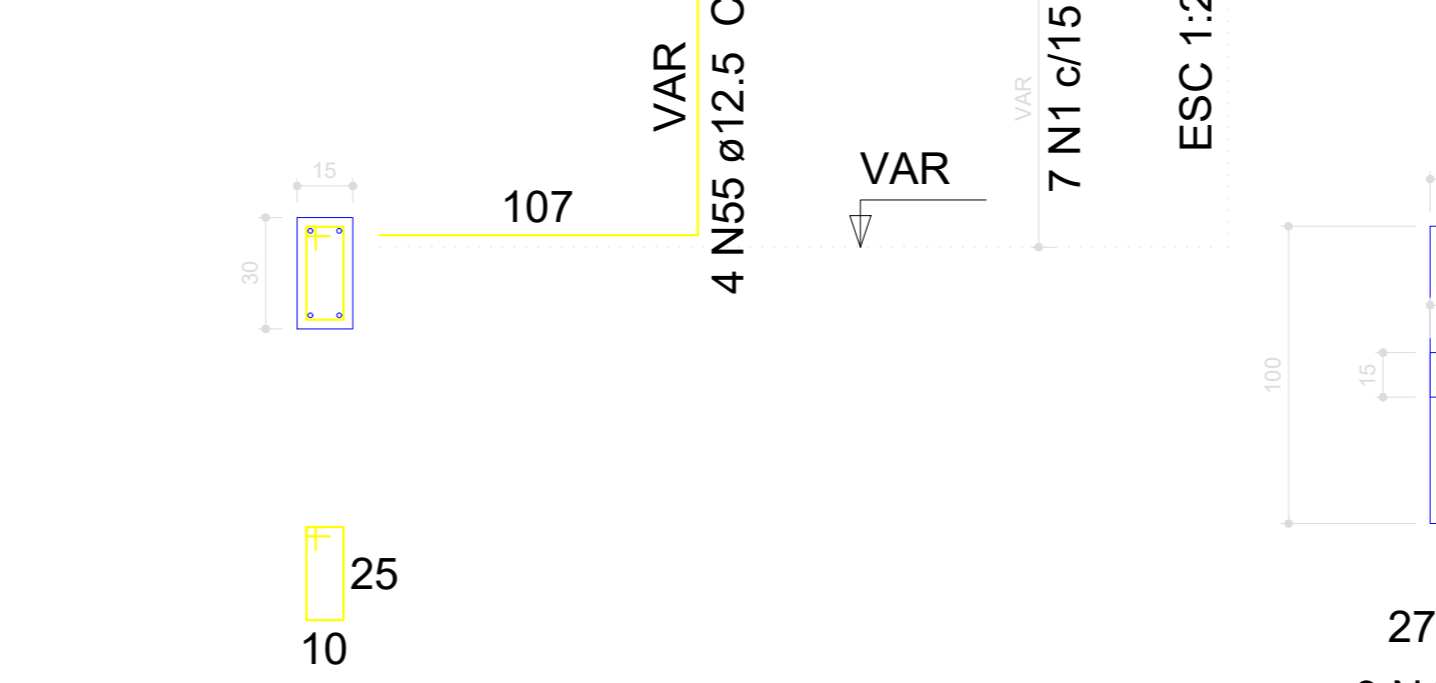
CORTE
ESC 1:25



Solo compactado sobre a sapata
peso específico > 1600.00 kgf/m³

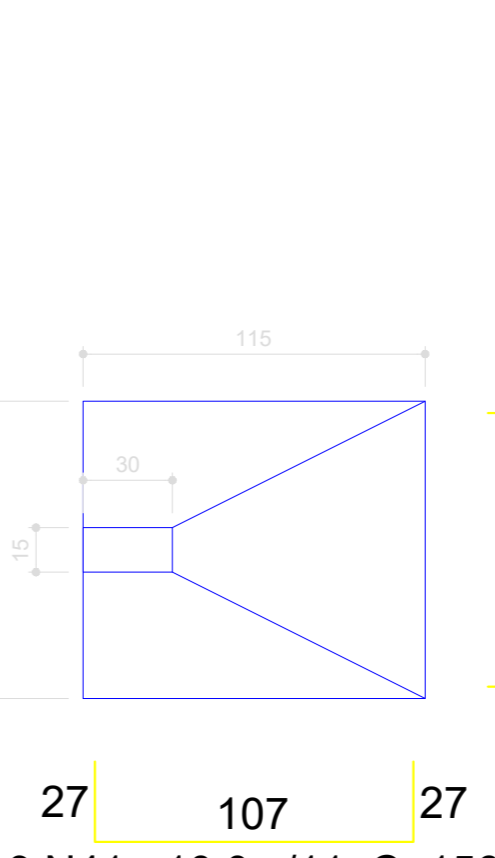
P30

TERREO - L1
ESC 1:20

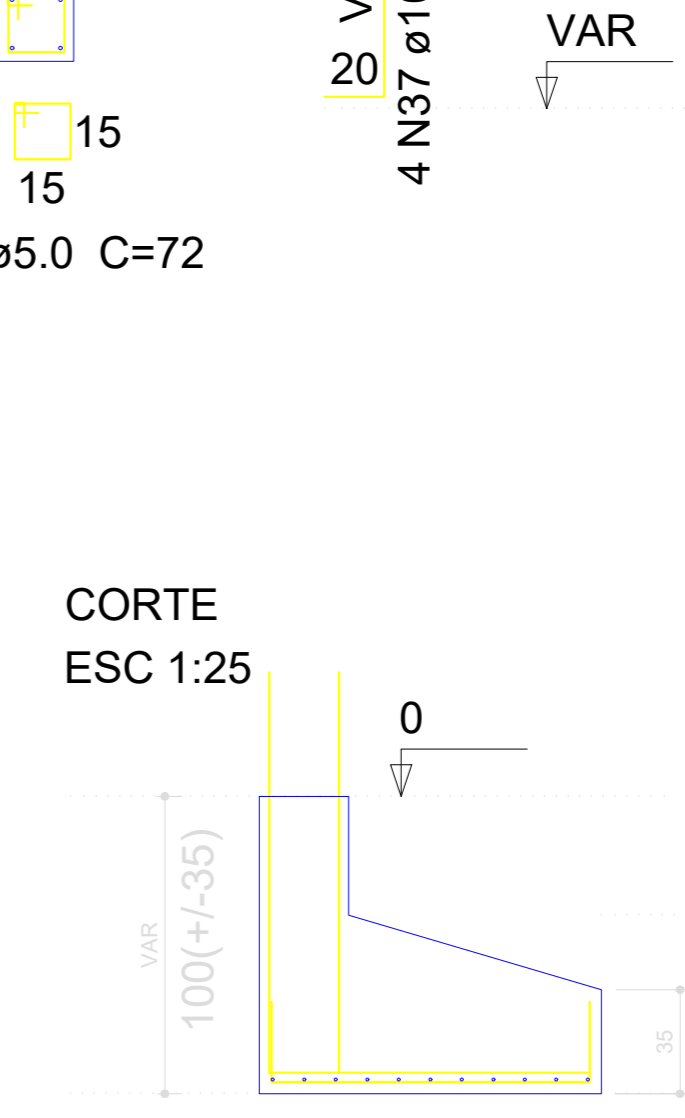


S30

PLANTA
ESC 1:25



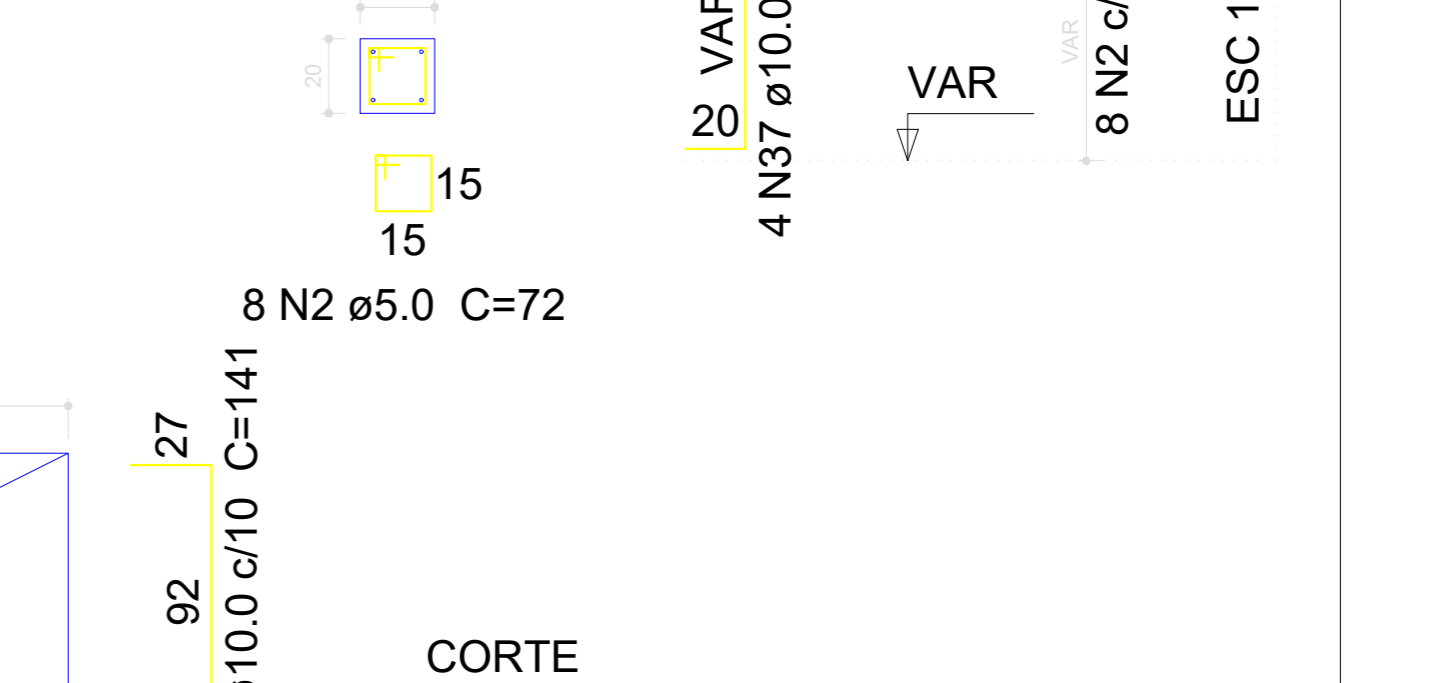
CORTE
ESC 1:25



Solo compactado sobre a sapata
peso específico > 1600.00 kgf/m³

P12

TERREO - L1
ESC 1:20



Dieferson Branger
Eng. Civil CREA-SC 096024-8

Prefeitura Municipal de Bocaina do Sul
Rua João Assink , 322, Centro