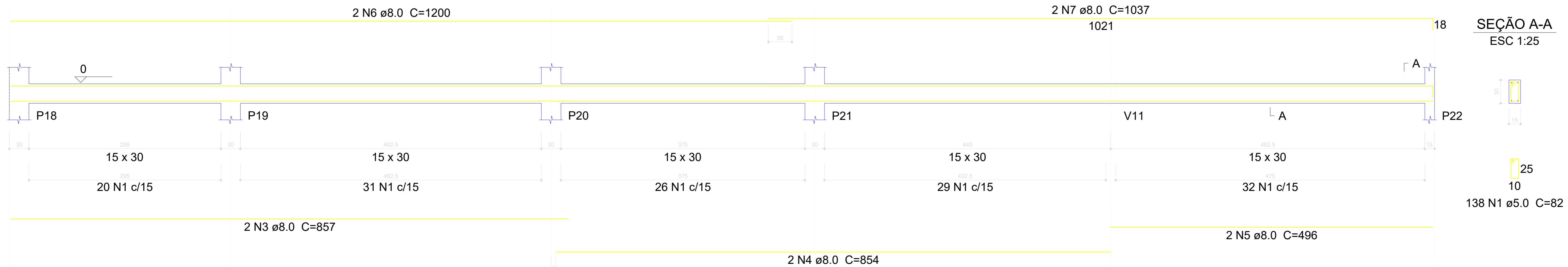


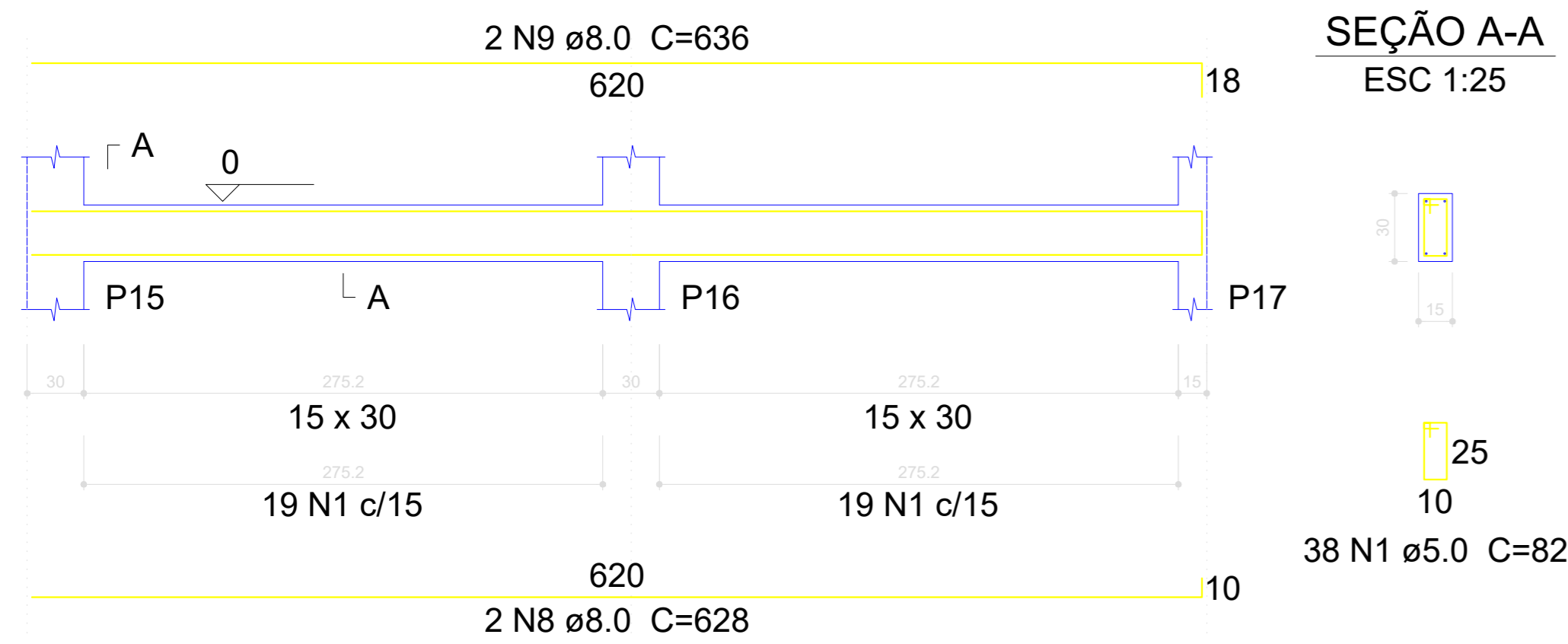
V1
ESC 1:30



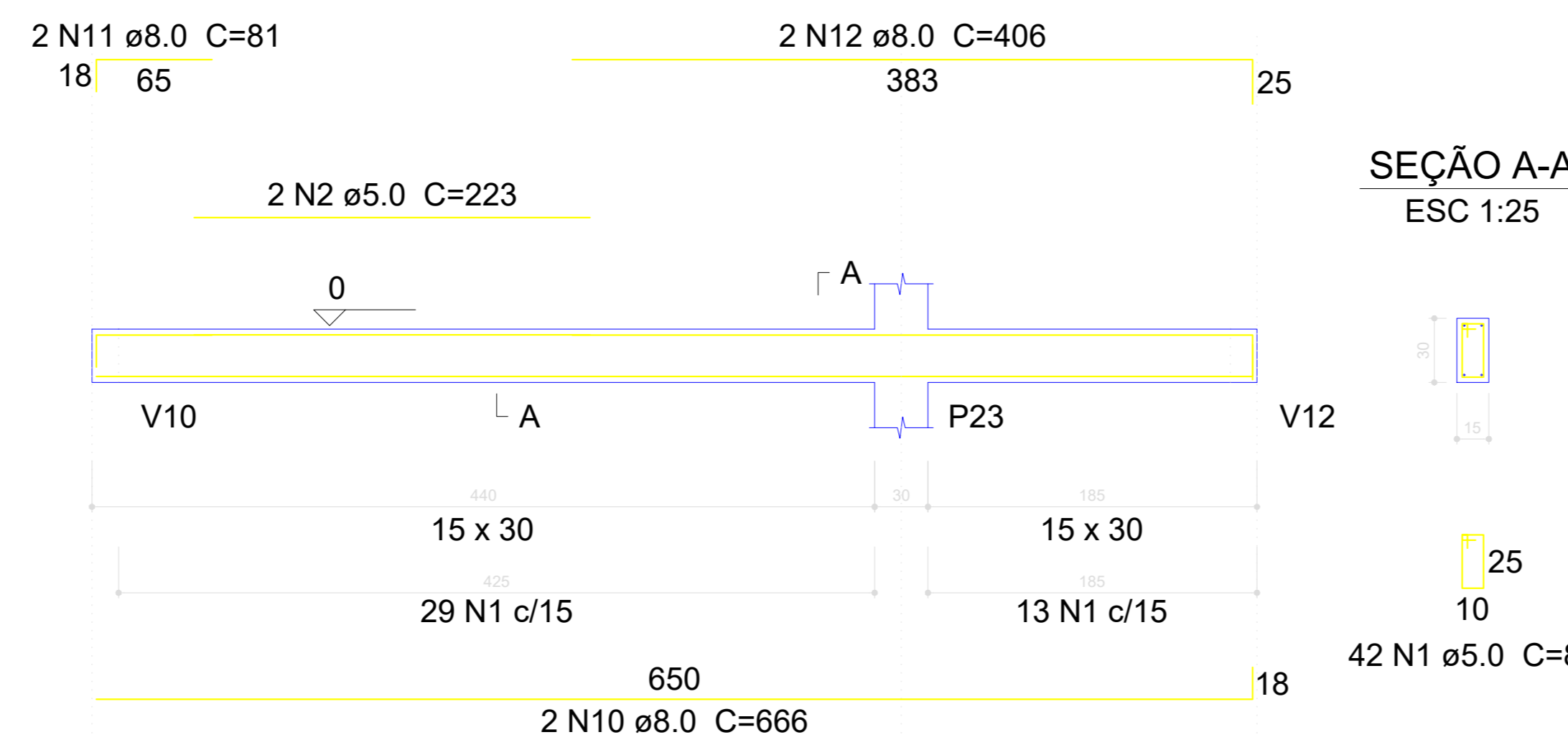
Relação do aço

AÇO	N	DIAM (mm)	QUANT (Barras)	UNIT (cm)	C.TOTAL (cm)
CA60	1	5.0	597	82	48954
	2	5.0	2	223	446
CA50	3	8.0	4	857	3428
	4	8.0	2	854	1708
	5	8.0	2	496	992
	6	8.0	4	1200	4800
	7	8.0	4	1037	4148
	8	8.0	2	628	1256
	9	8.0	2	636	1272
	10	8.0	2	666	1332
	11	8.0	2	81	162
	12	8.0	2	406	812
	13	8.0	2	631	1262
	14	8.0	2	639	1278
	15	8.0	2	846	1692
	16	8.0	2	488	976
	17	8.0	2	415	830
	18	8.0	2	440	880
	19	8.0	4	400	1600
	20	8.0	4	423	1692
	21	8.0	2	456	912
	22	8.0	1	186	186
	23	8.0	2	436	872
	24	8.0	1	95	95
	25	8.0	2	443	886
	26	8.0	2	300	600
	27	8.0	2	332	664
	28	8.0	2	415	830
	29	8.0	1	103	103
	30	8.0	2	431	862
	31	8.0	2	439	878
	32	8.0	1	125	125
	33	8.0	2	454	908
	34	10.0	2	415	830

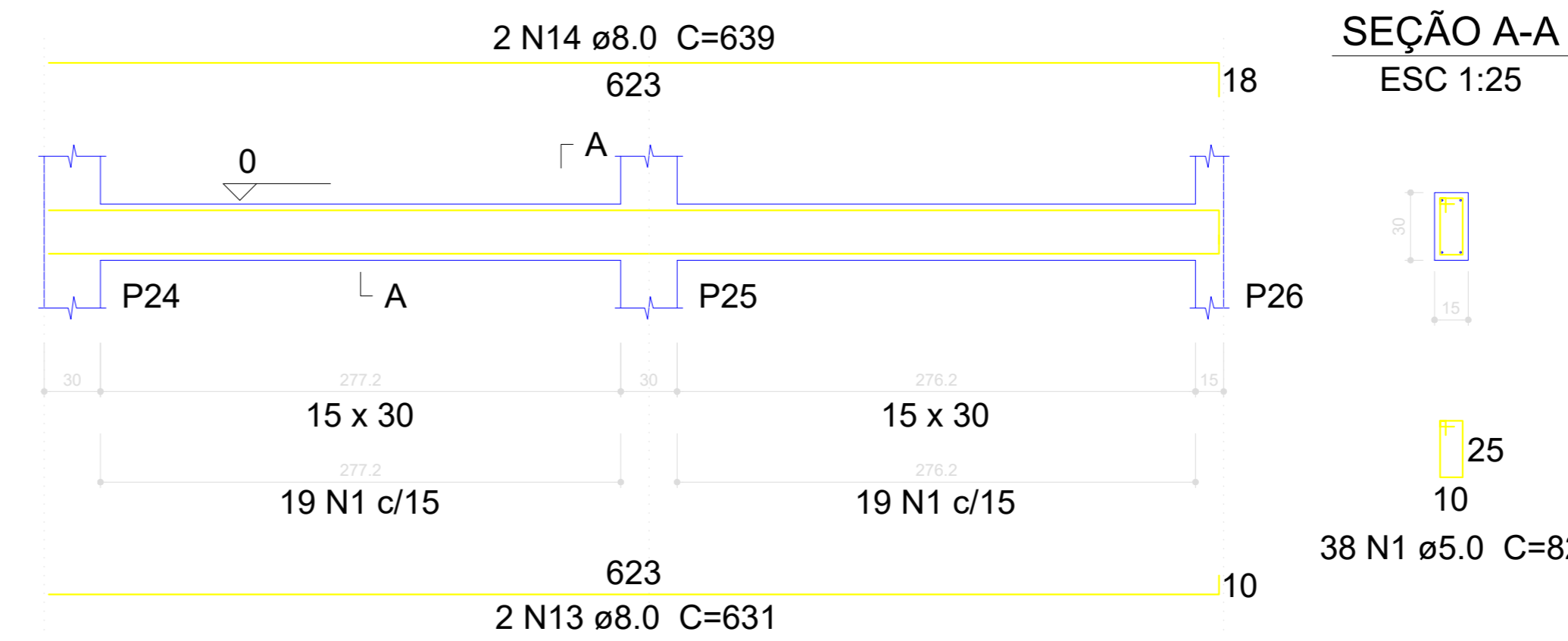
V2
ESC 1:30



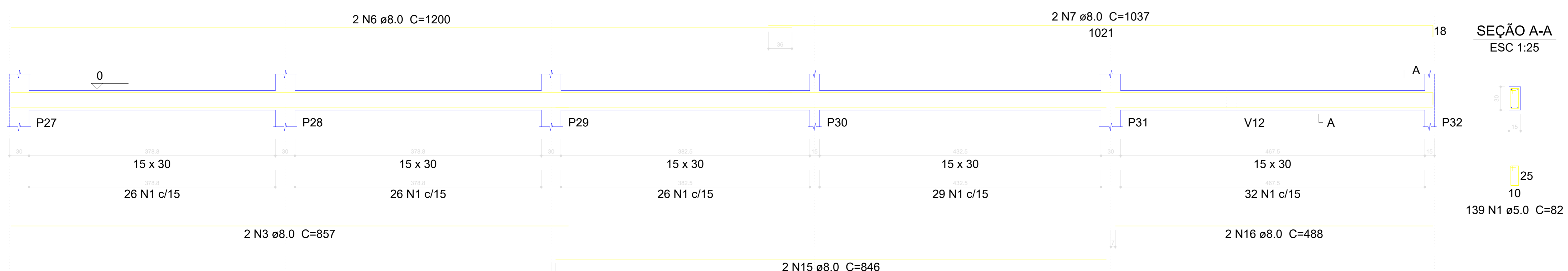
V3
ESC 1:30



V4
ESC 1:30



V5
ESC 1:30

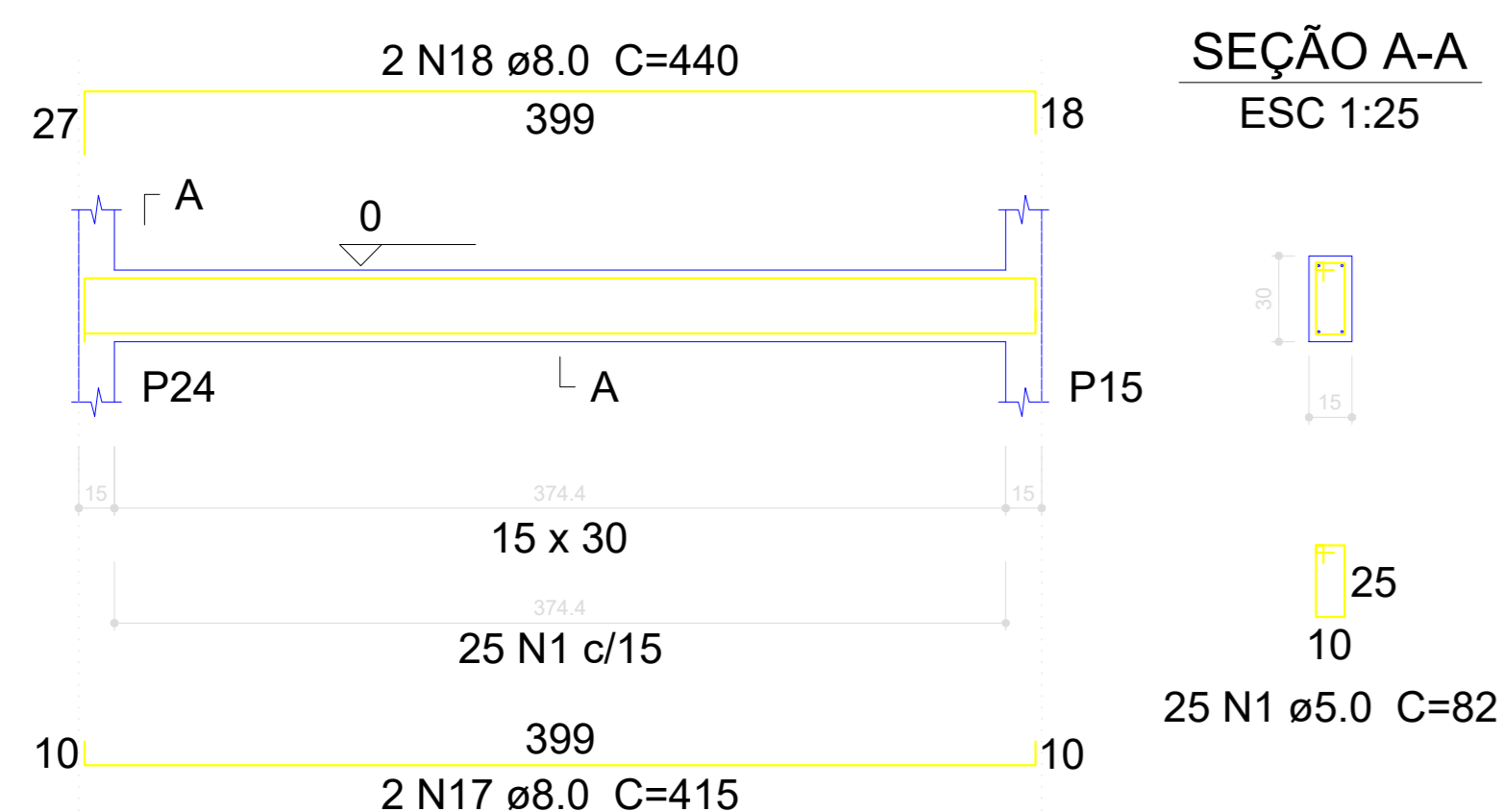


Resumo do aço

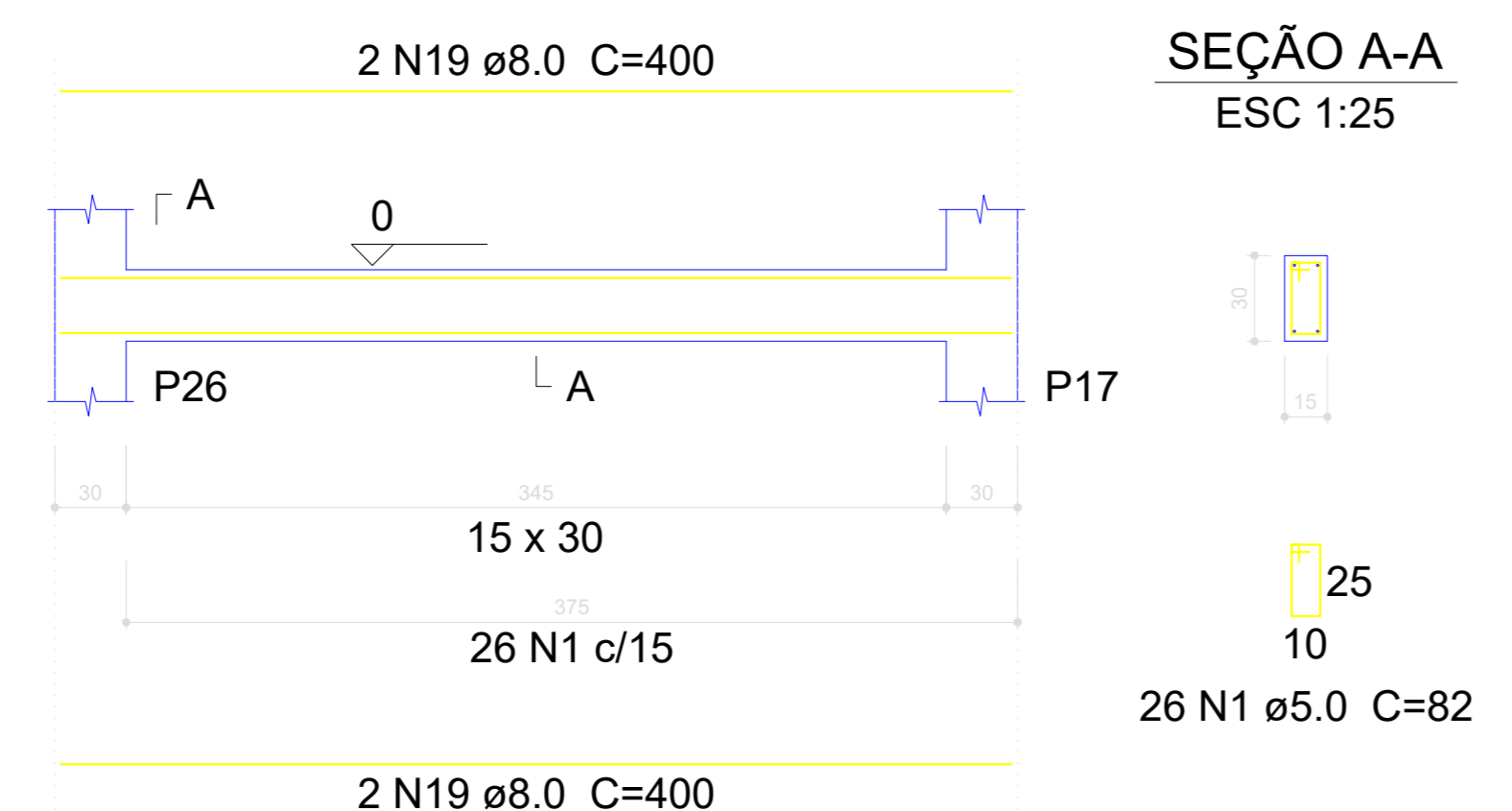
AÇO	DIAM (mm)	C.TOTAL (m)	PESO + 10 % (kg)
CA50	8.0	380.5	165.1
	10.0	8.3	5.6
CA60	5.0	494	83.8
PESO TOTAL (kg)			
CA50		170.7	
CA60		83.8	

Volume de concreto (C-30) = 4.28 m³
Área de forma = 71.31 m²

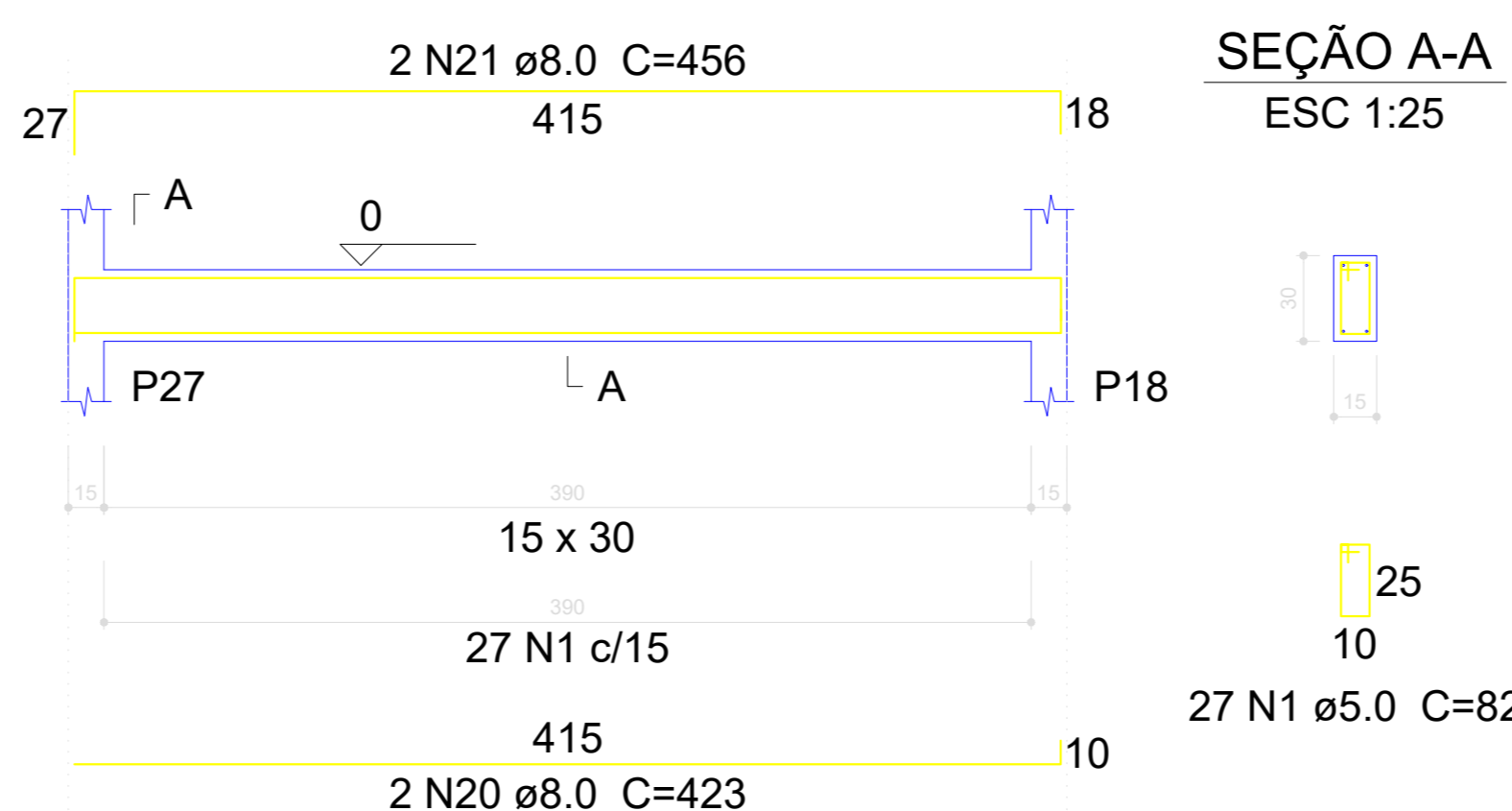
V6
ESC 1:30



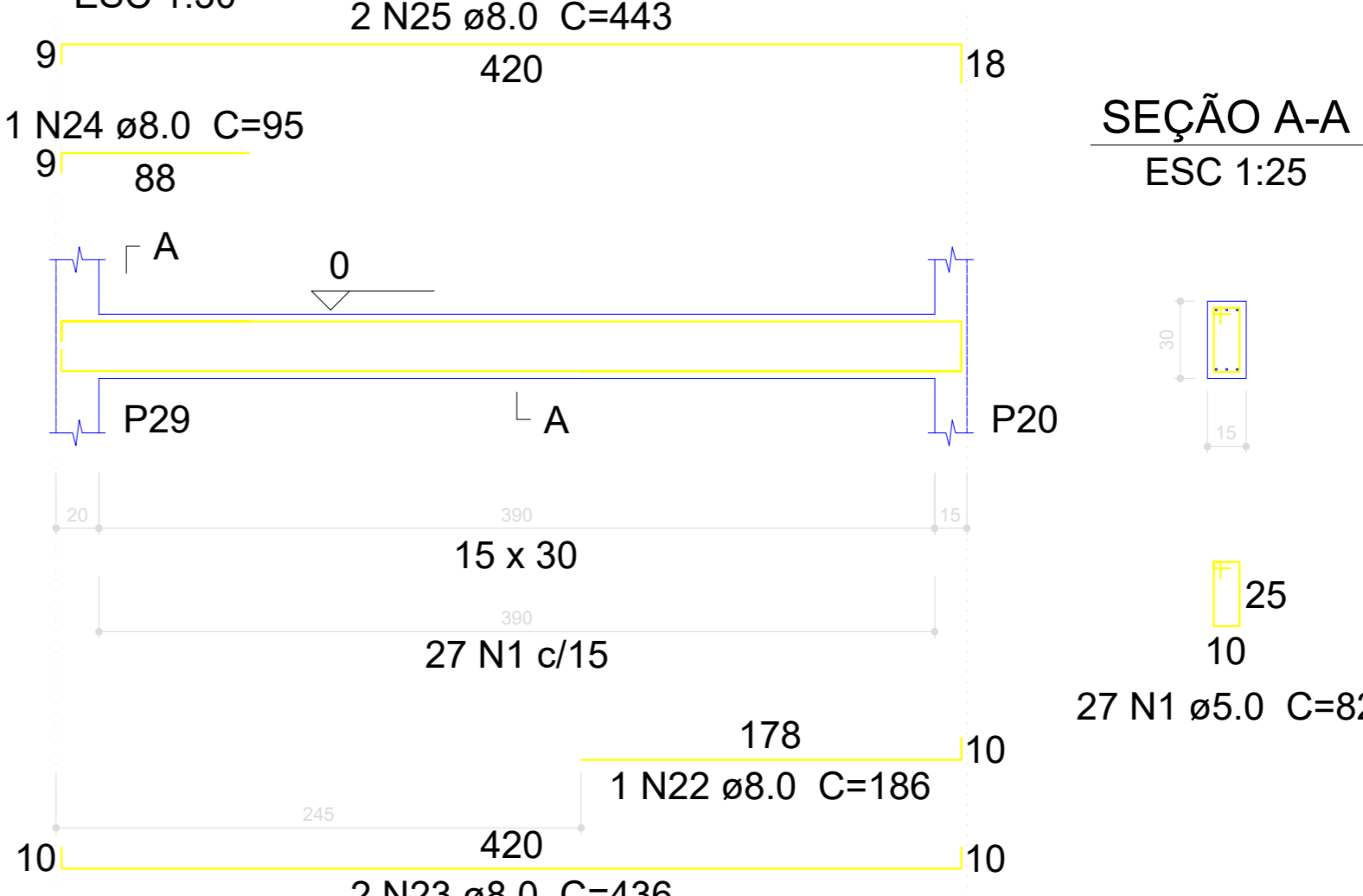
V7
ESC 1:30



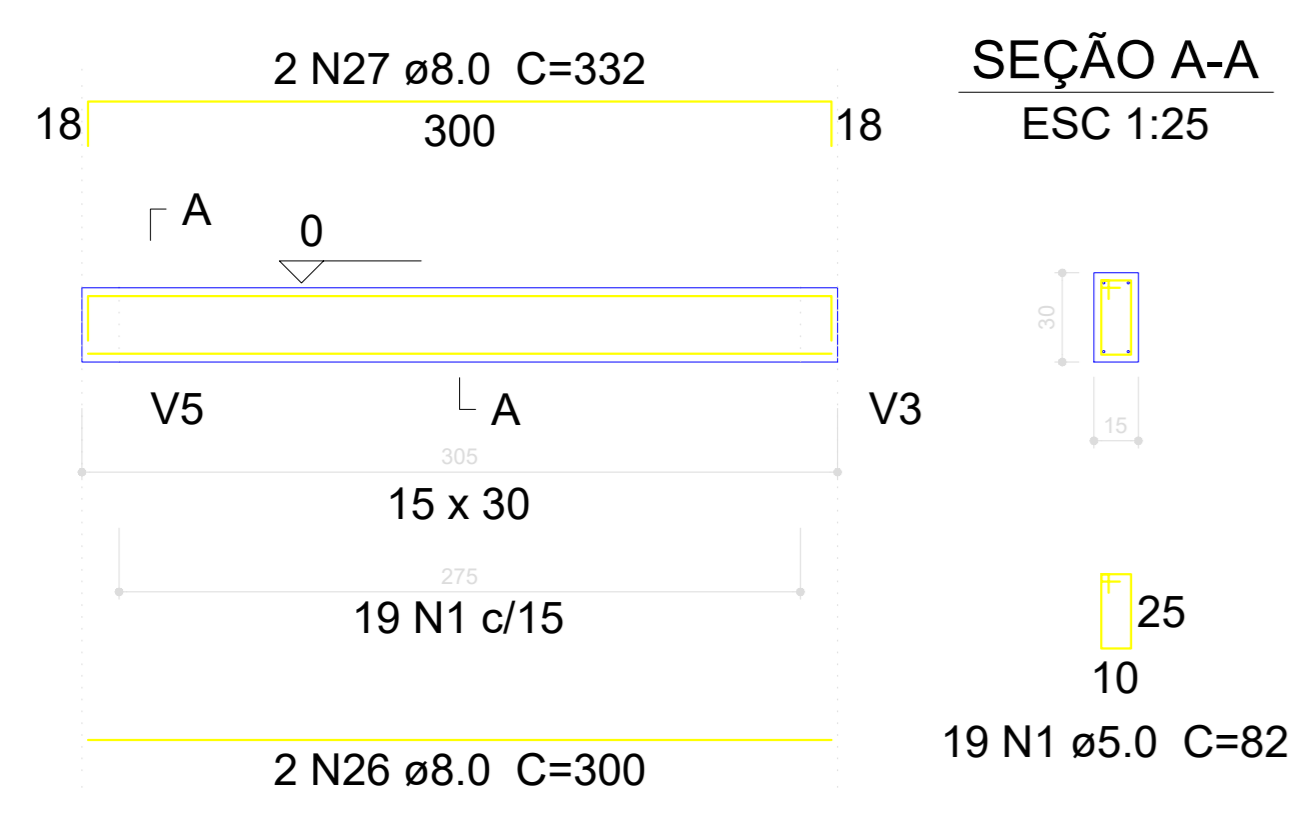
V8
ESC 1:30



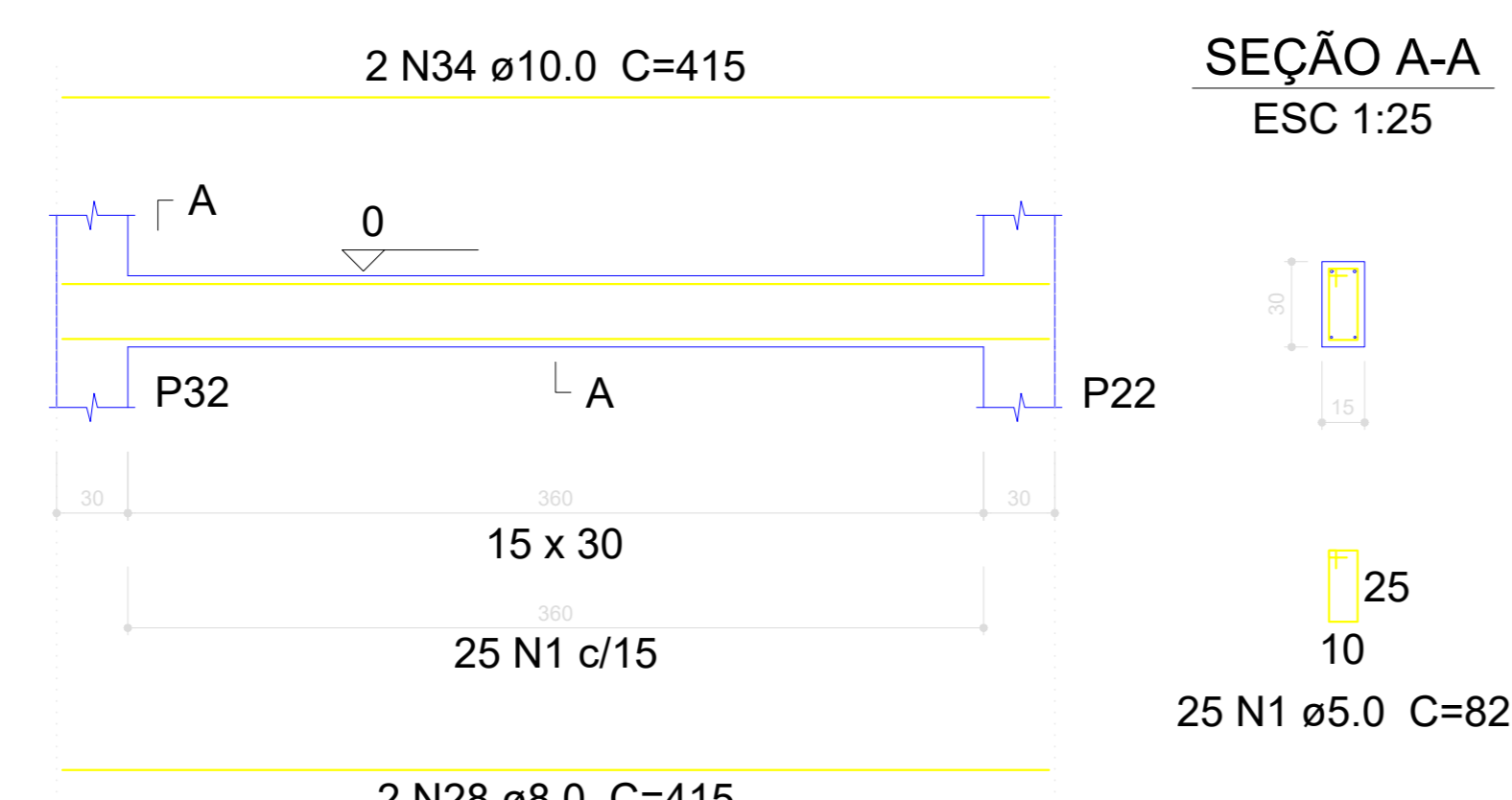
V9
ESC 1:30



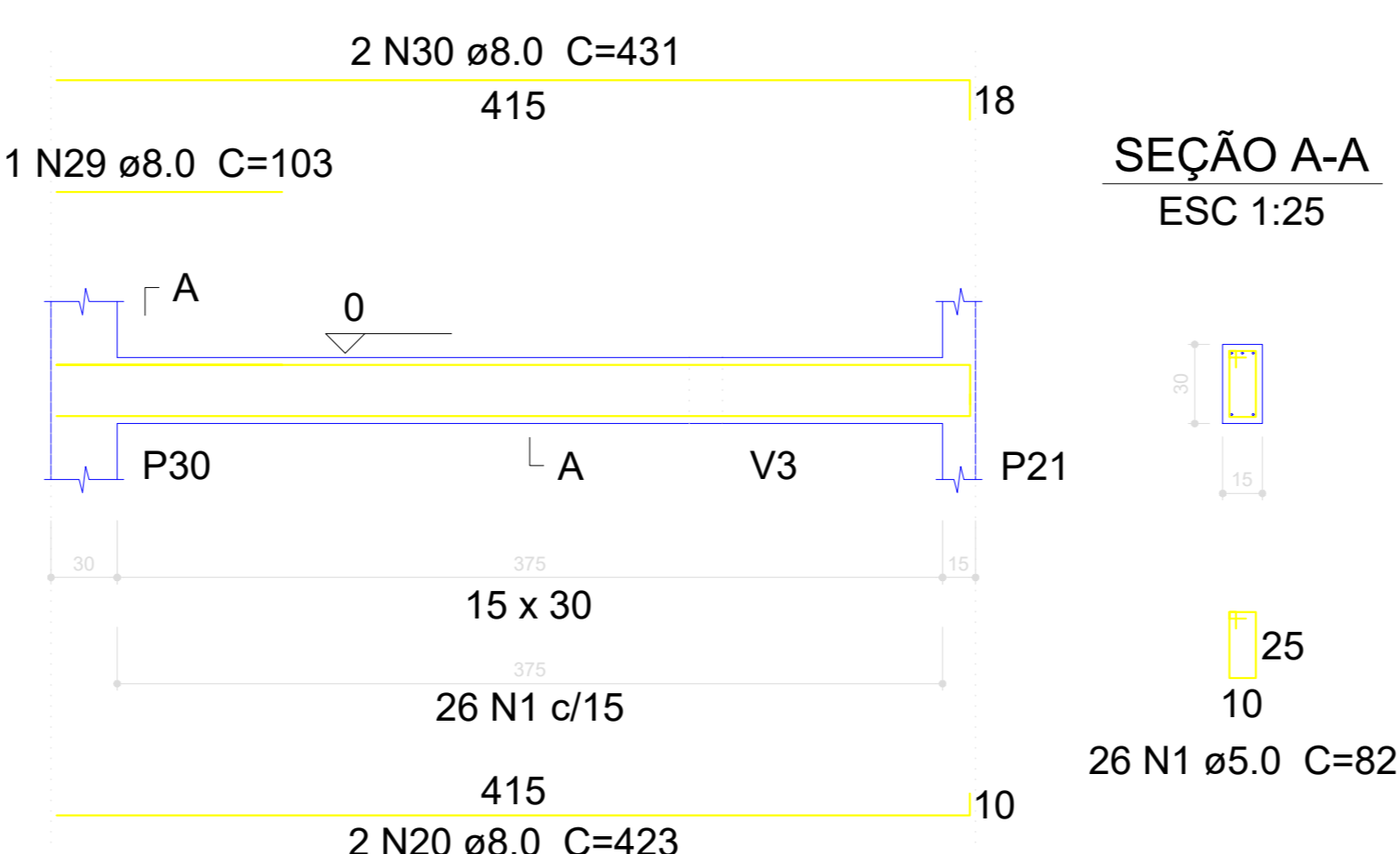
V12
ESC 1:30



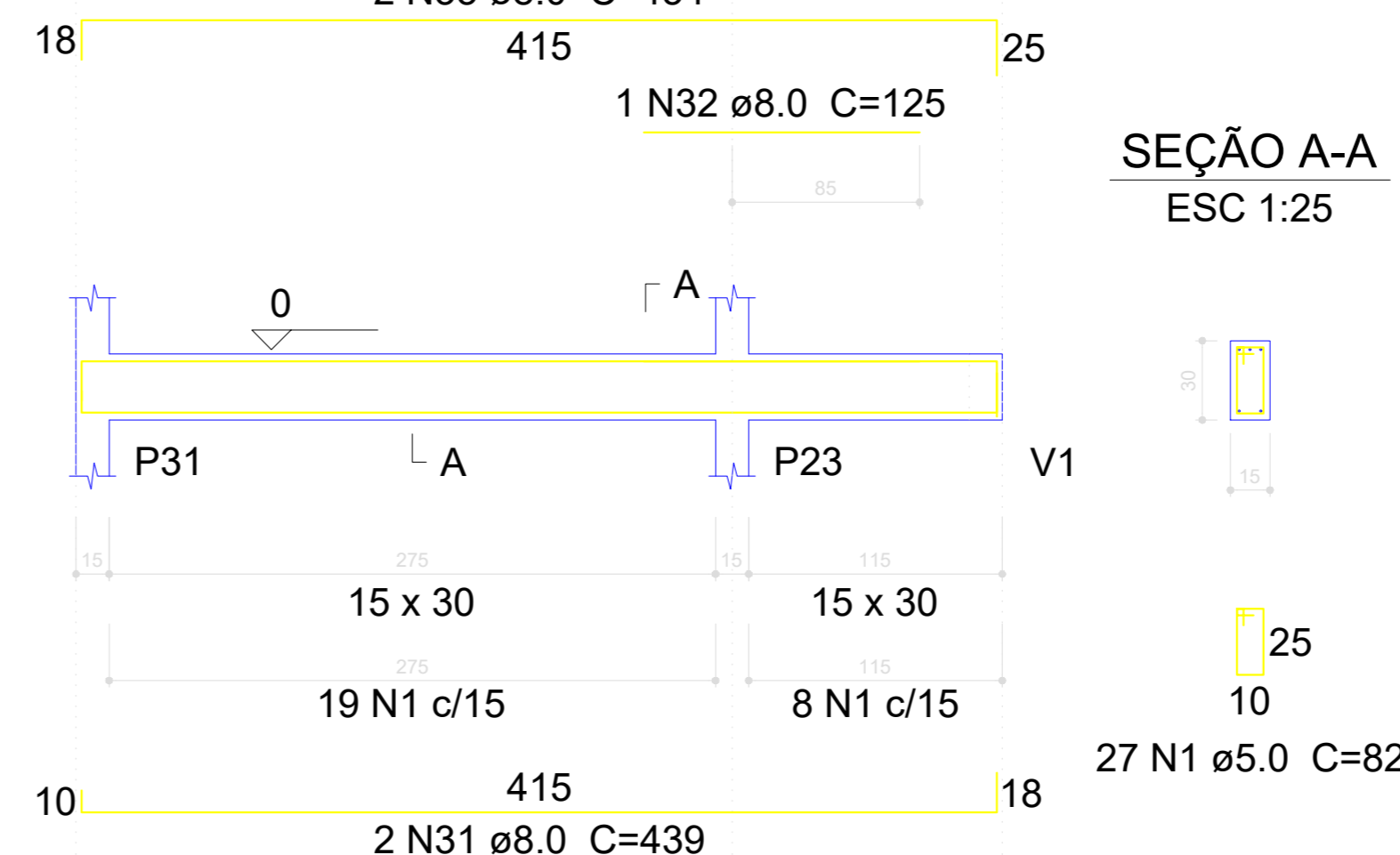
V13
ESC 1:30



V10
ESC 1:30



V11
ESC 1:30



Dieferson Branger
Eng. Civil CREA-SC 096024-8

Prefeitura Municipal de Bocaina do Sul
Rua João Assink , 322, Centro

ENDEREÇO: Estrada Geral de Campinas - Bairro Interior - Bocaina do Sul
DESCRIÇÃO: ESCOLA NUCLEADA MUNICIPAL JOÃO VALTER
PROPRIETÁRIO: Prefeitura Municipal de Bocaina do Sul

CATEGORIA: ESTRUTURAL
PROJETO: Reforma e Ampliação
REFERÊNCIA: DETALHAMENTO DAS VIGAS BALDRAME

RESPONSÁVEL TÉCNICO: Dieferson Branger
Eng. Civil CREA-SC 096024-8

DATA: 16/07/2020

FOLHA: **STR**
06/09
A0

