

Relação do aço

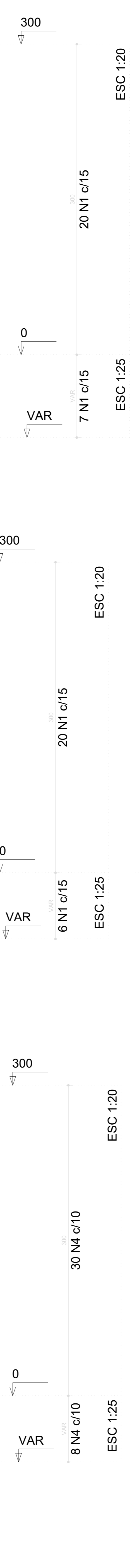
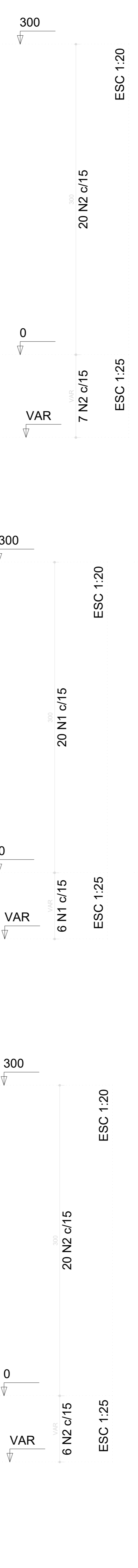
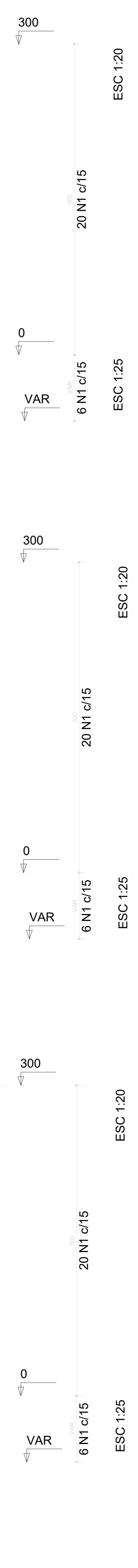
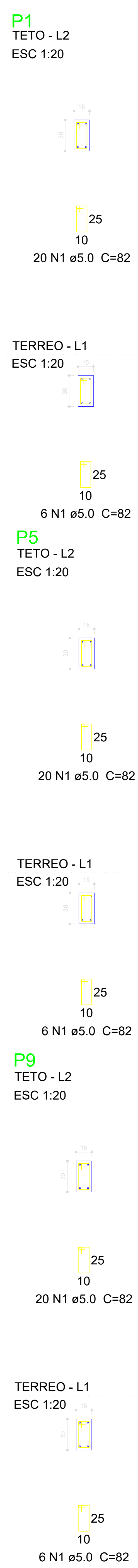
P1	P2	P3
P4	P5	P6
P7	P8	P9
P10	P11	P12
P13	P14	P15
P16	P17	P18
P19	P20	P21
P22	P23	P24
P25	P26	P27
P28	P29	P30
P31	P32	P33

AÇO	N	DIAM (mm)	QUANT (Barras)	UNIT (cm)	C.TOTAL (cm)
CA60	1	5.0	659	82	540
	2	5.0	107	92	98
	3	5.0	21	30	6
	4	5.0	152	72	109
	5	5.0	30	25	7
	6	5.0	86	25	21
CA50	7	10.0	16	VAR	VA
	8	10.0	30	297	89
	9	10.0	6	67	4
	10	10.0	4	VAR	VA
	11	10.0	4	VAR	VA
	12	12.5	4	VAR	VA
	13	12.5	118	297	350
	14	12.5	2	VAR	VA
	15	12.5	8	VAR	VA
	16	12.5	8	VAR	VA
	17	12.5	64	VAR	VA
	18	12.5	8	VAR	VA
	19	12.5	10	83	8
	20	12.5	6	VAR	VA
	21	12.5	8	VAR	VA
	22	12.5	4	VAR	VA
	23	12.5	8	VAR	VA
	24	12.5	4	VAR	VA
	25	12.5	6	VAR	VA
	26	12.5	4	VAR	VA

Resumo do aço

AÇO	DIAM (mm)	C.TOTAL (m)	PESO + 10% (kg)
CA50	10.0	129.4	87.7
	12.5	580.7	615.3
CA60	5.0	783.6	132.9
PESO TOTAL (kg)			
CA50		703	
CA60		132.9	

Volume de concreto (C-30) = 5.74 m³
 Área de forma = 111.66 m²



Dieferson Branger
 Eng. Civil CREA-SC 096024-8

Prefeitura Municipal de Bocaina do Sul
 Rua João Assink, 322, Centro