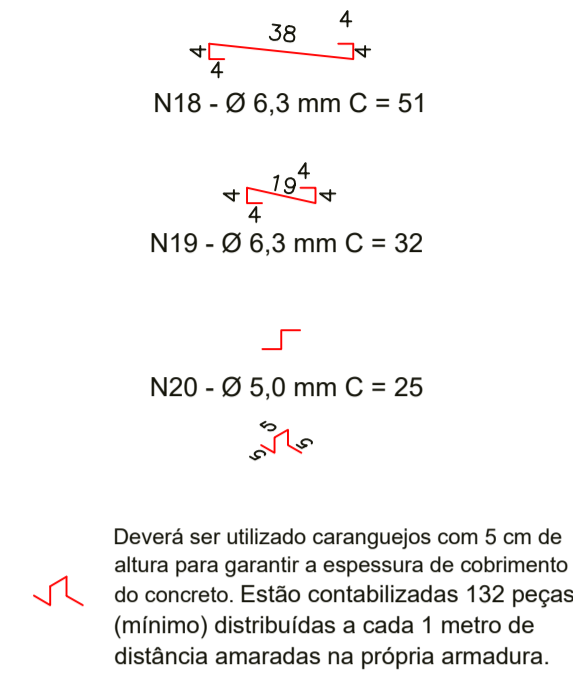
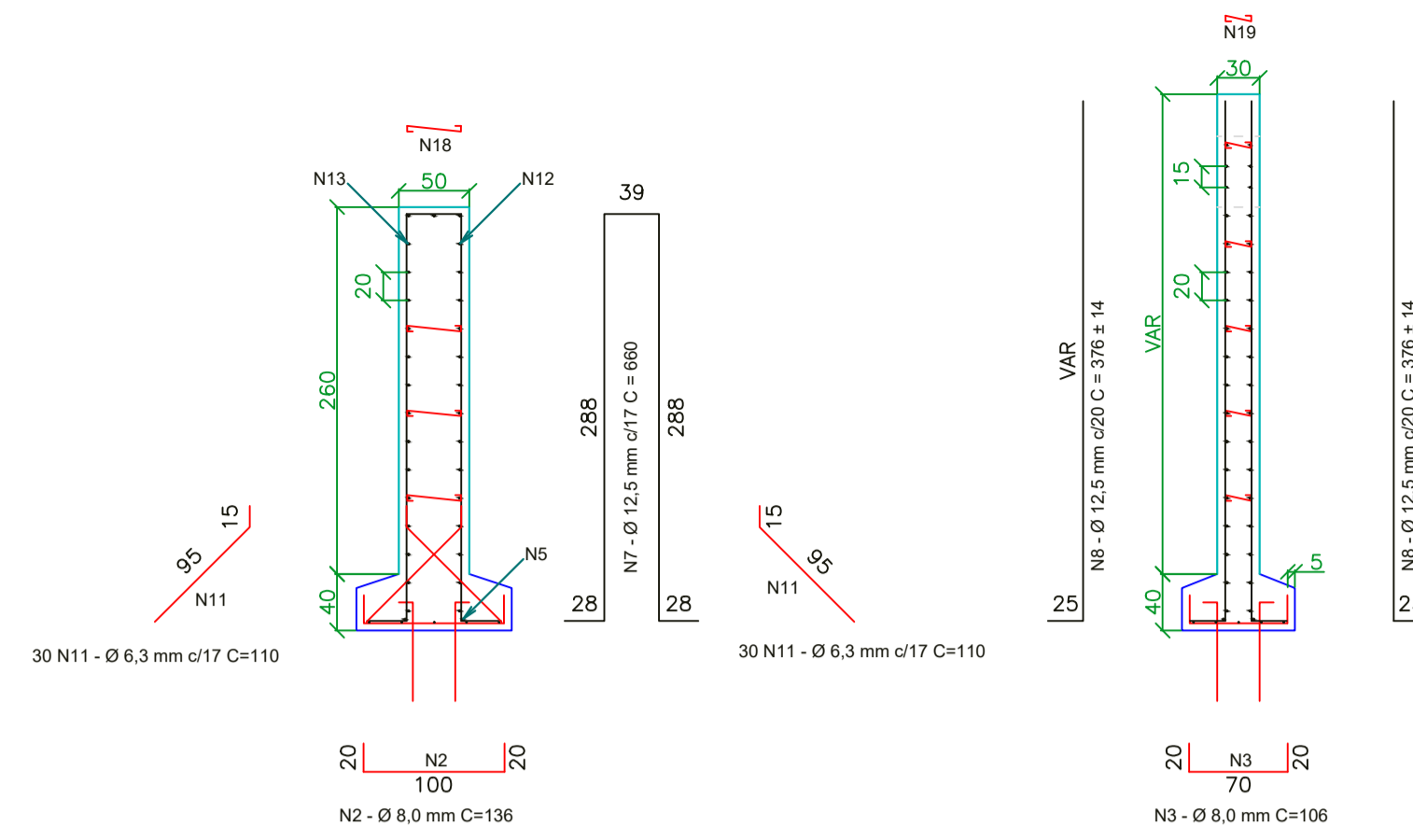
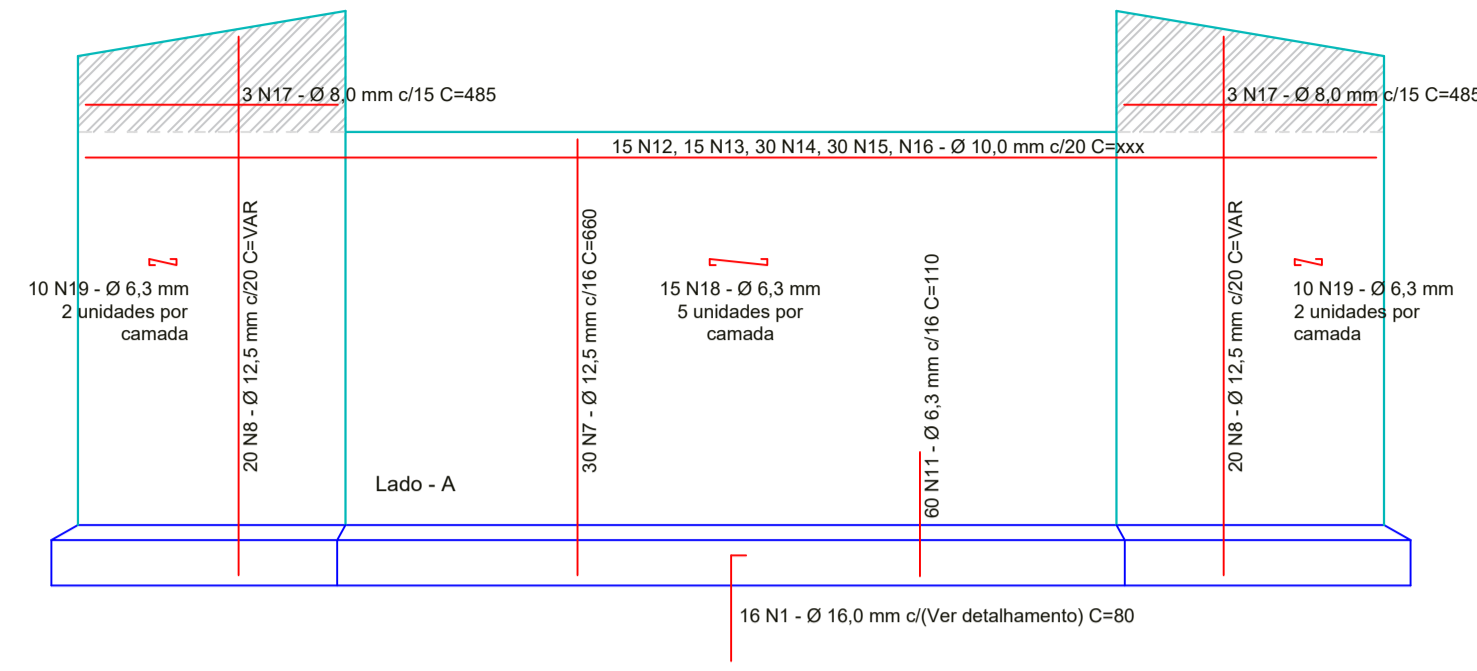


Escala: 1 / 50



Deverá ser utilizado caranguejos com 5 cm de altura para garantir a espessura de cobrimento do concreto. Estão contabilizadas 132 peças (mínimo) distribuídas a cada 1 metro de distância amarradas na própria armadura.

Relação do aço  
Lado - A e Lado - B

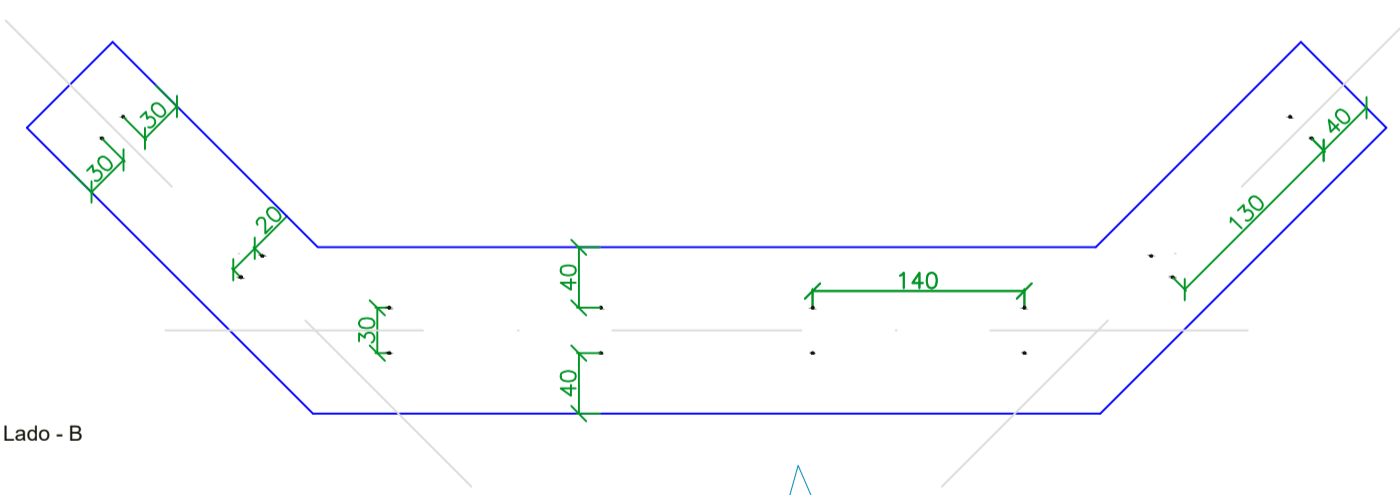
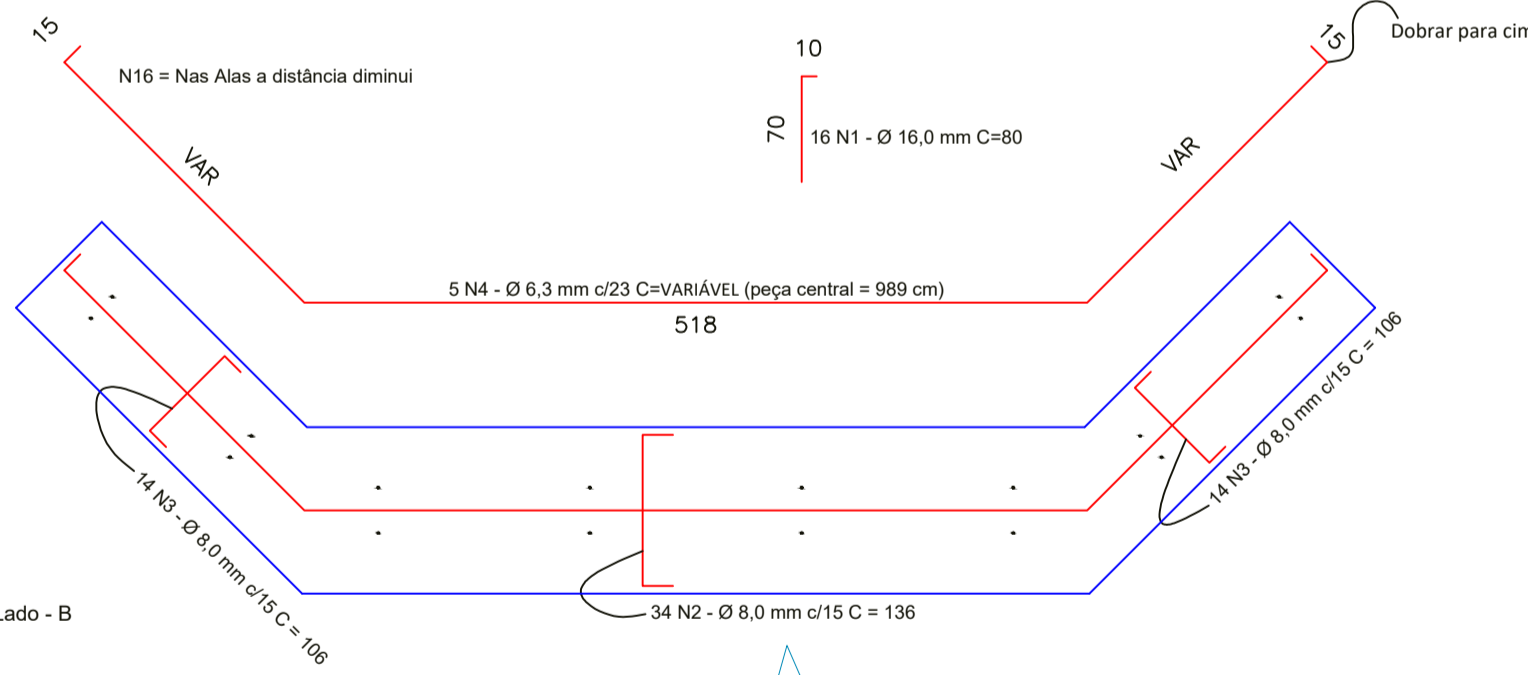
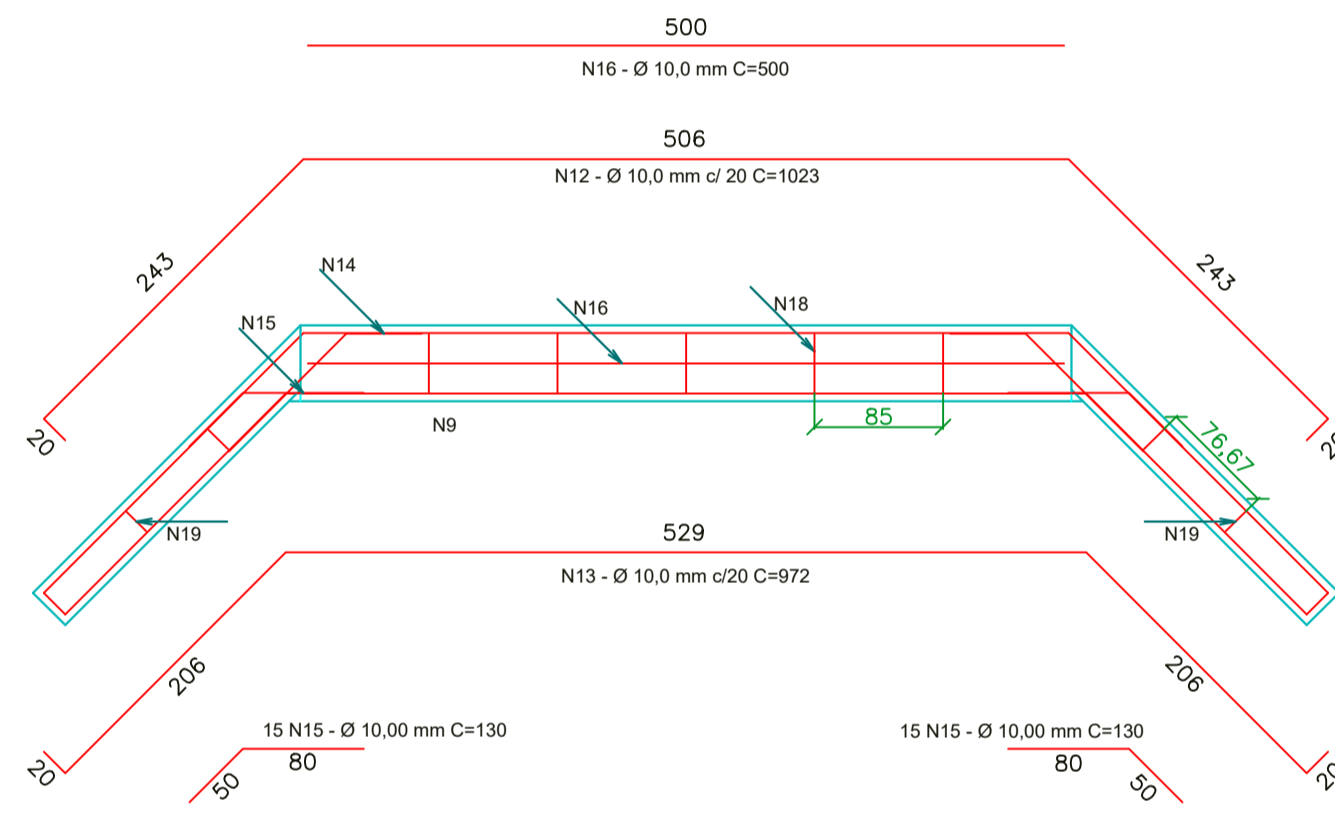
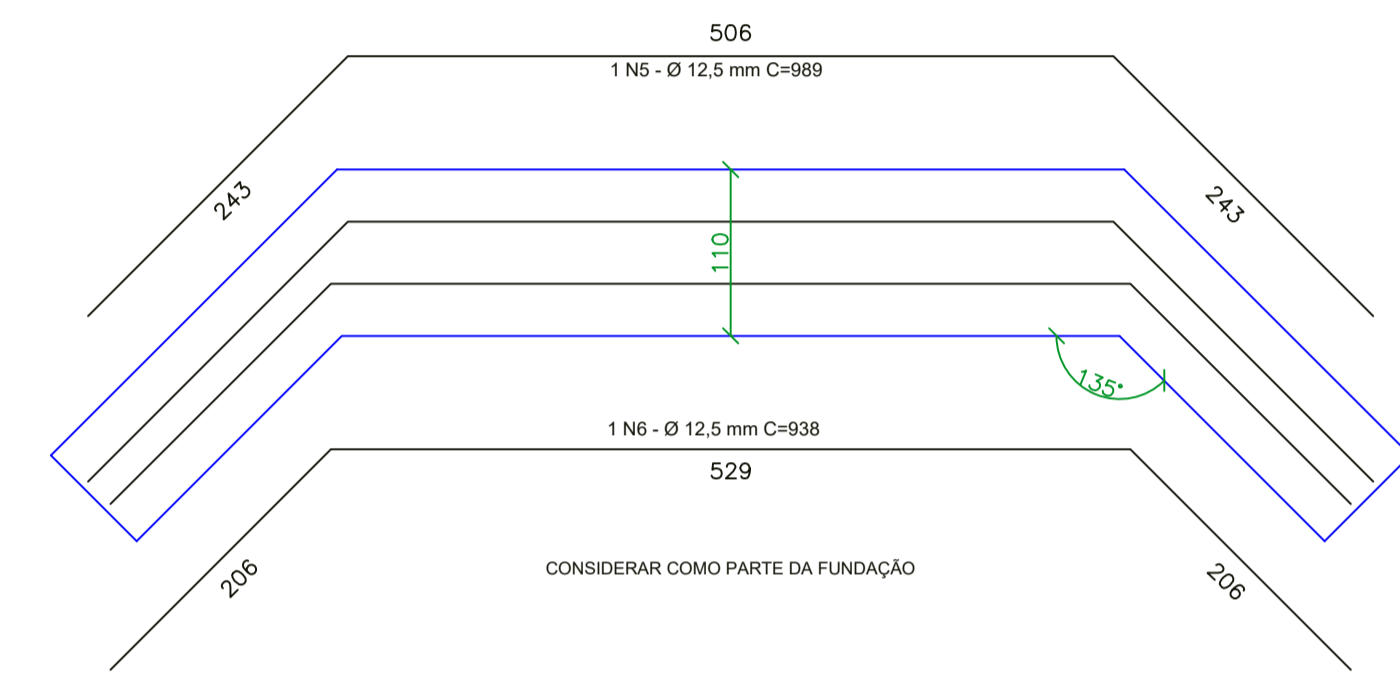
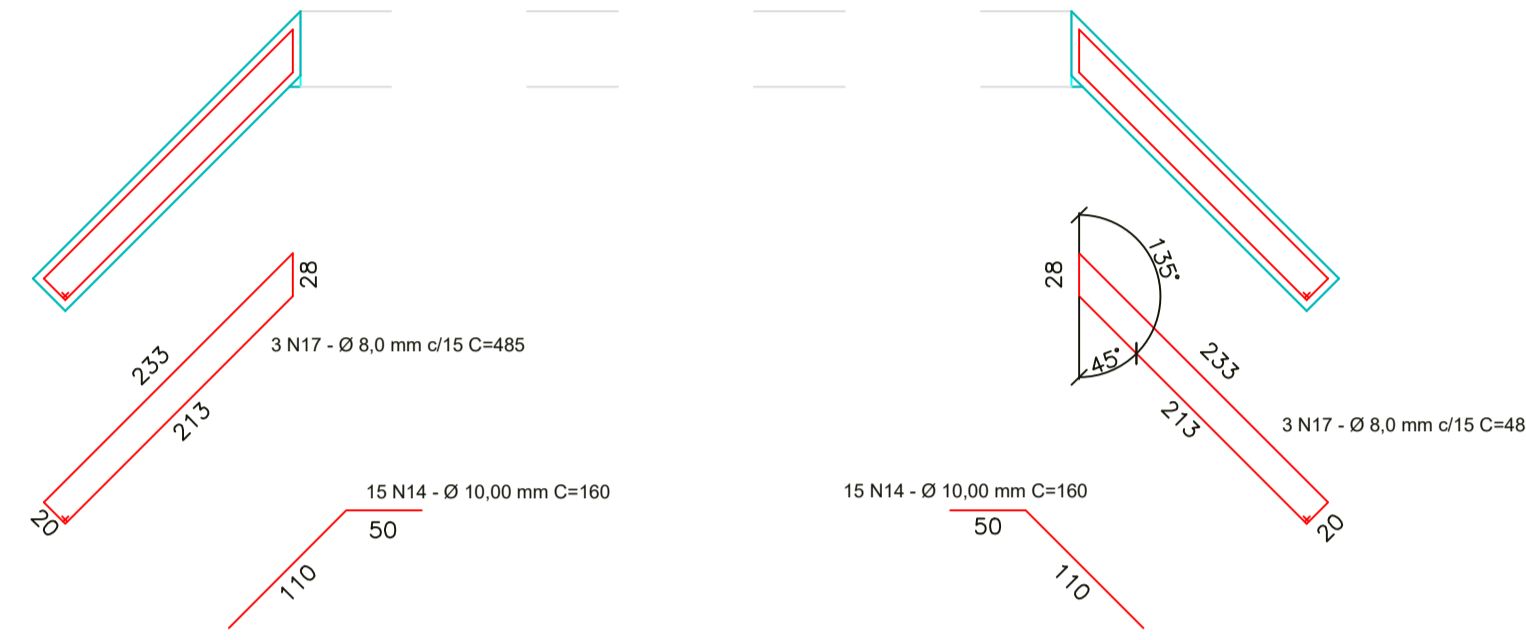
AÇO	N	DIAM	Q	UNIT (cm)	C.TOTAL (cm)
CA50	1	16.0	32	80	2560
	2	8.0	68	136	9248
	3	8.0	56	106	5936
	4	6.3	10	VAR	9900
	5	12.5	2	989	1978
	6	12.5	2	938	1876
	7	12.5	30	660	19800
	8	12.5	40	VAR	15040
	9	12.5	30	540	16200
	10	12.5	40	VAR	12640
	11	6.3	120	110	13200
	12	10.0	27	1023	27621
	13	10.0	27	972	26244
	14	10.0	54	160	8640
	15	10.0	54	130	7020
	16	10.0	2	500	1000
	17	8.0	12	485	5820
	18	6.3	25	51	1275
	19	6.3	36	32	1152
CA60	20	5.0	132	25	3300

Resumo do aço

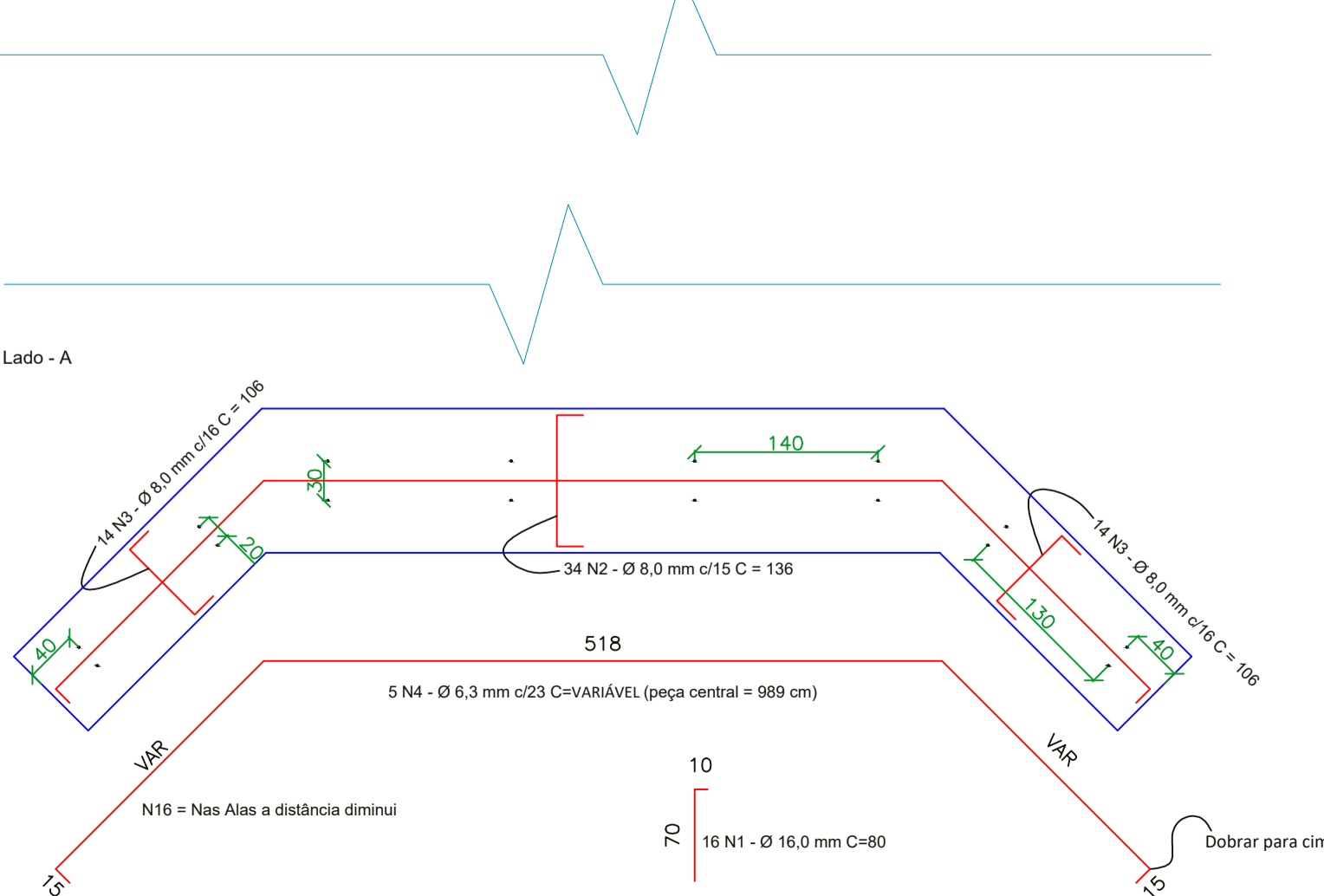
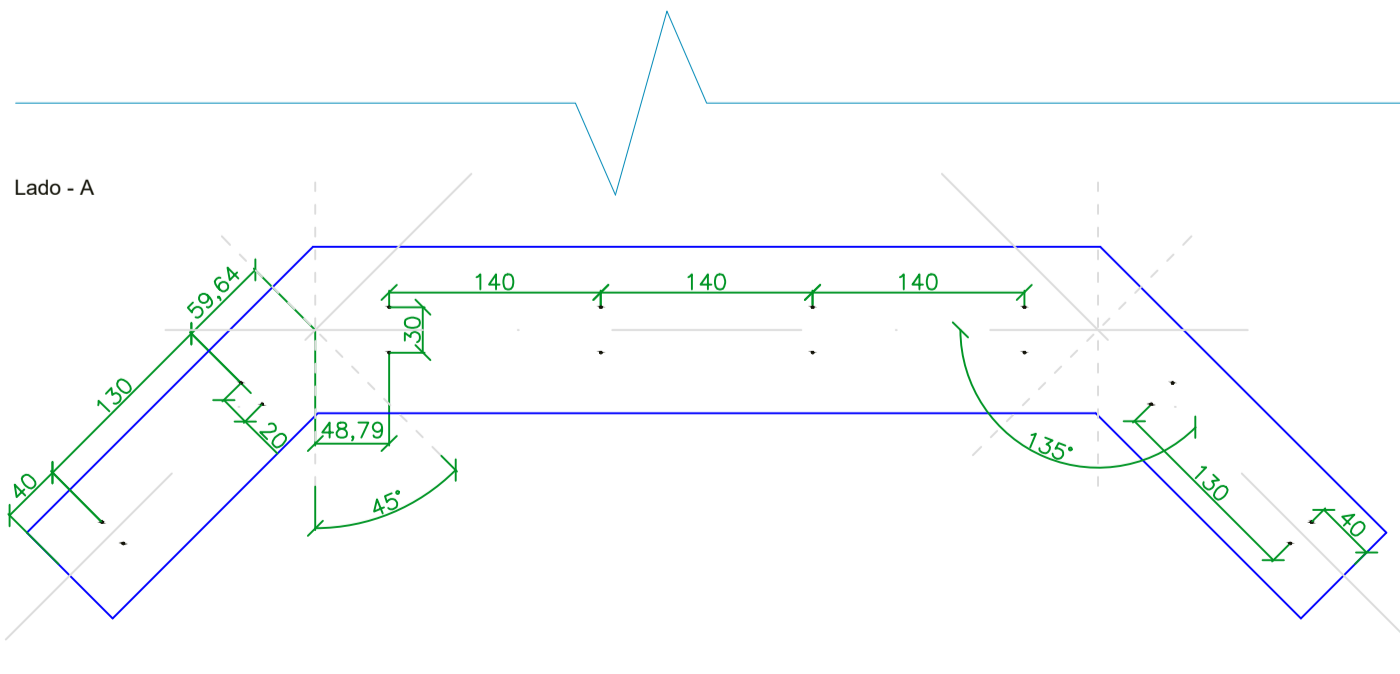
AÇO	DIAM	C.TOTAL (m)	PESO + 10 % (kg)
CA50	6.3	255.3	68.9
	8.0	210.1	91.3
	10.0	705.3	478.7
	12.5	675.4	715.5
	16.0	25.6	44.5
CA60	5.0	33.0	5.6
<b>PESO TOTAL</b>			
CA50		1398.9	
CA60		5.6	

Vol. de concreto Lado - A (C-35) = 15.46 m³  
Vol. de concreto Lado - B (C-35) = 13.00 m³  
VOL. DE CONCRETO TOTAL (C-35) = 28.46 m³

Área de forma Lado - A = 74.71 m²  
Área de forma Lado - B = 62.02 m²  
ÁREA DE FORMA TOTAL = 136.73 m²



DETALHAMENTO LOCAL DAS ANCORAGENS



Aprovações:

João Eduardo Della Justina  
PREFEITO

Thiago Rocha Karnopp  
RESPONSÁVEL TÉCNICO

PREFEITURA MUNICIPAL DE BOCAINA DO SUL

CABECEIRAS PARA PONTE SOBRE O RIO CAMPINAS

PROJETO ESTRUTURAL LADO - A



PREFEITO João Eduardo Della Justina	DATA 12/02/2021	ESCALAS Indicadas
RESPONSÁVEL TÉCNICO Eng. Thiago Rocha Karnopp	CREA/SC n° 163030-6	PRANCHA 03/04