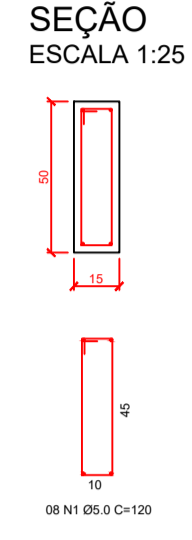
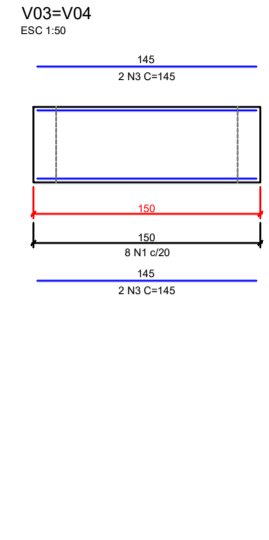
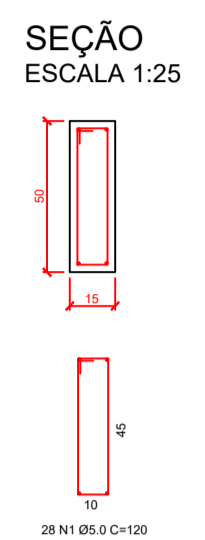
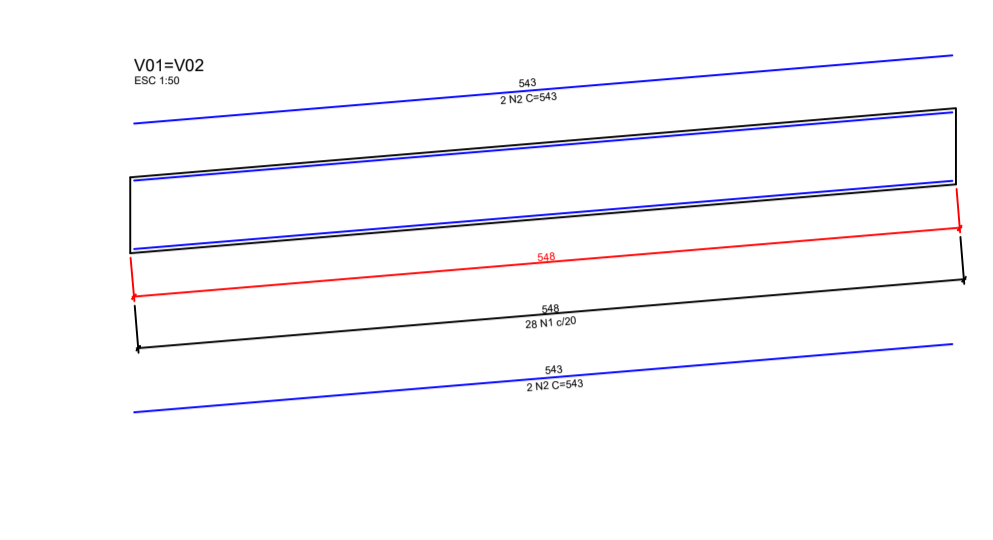


LEGENDA  
 01 - SAPATA 50x50x30CM  
 02 - VIGA BALDRAME  
 03 - CONTRAPISO E PISO DA RAMPA  
 04 - ATERRO COM MATERIAL DE 1ª CATEGORIA



RELAÇÃO DE AÇO

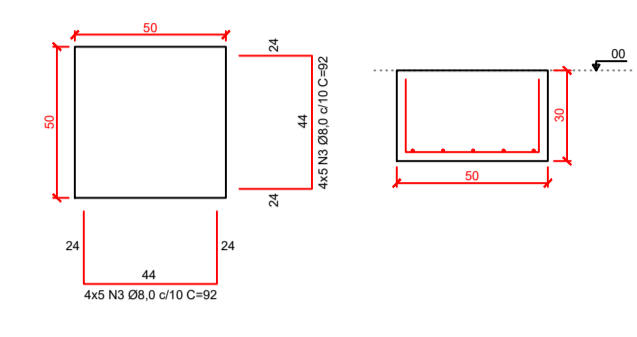
AÇO	N	DIAM	Q	UNIT (CM)	C. TOTAL (CM)
CA-60	1	5.0	36	120	4.320,00
CA-50	2	8.0	8	543	4.344,00
CA-50	3	8.0	8	145	1.160,00

RESUMO DO AÇO

AÇO	DIAM	C. TOTAL (M)	PESO + 10% (KG)
CA-60	5.0	43,20	23,91
CA-50	8.0	55,04	7,32
PESO TOTAL			
CA-60			23,91
CA-50			7,32

VOLUME DE CONCRETO TOTAL (C-25) = 1,05M³  
 ÁREA DE FORMA TOTAL = 7,28M²

S01=S02=S03=S04=S05=S06



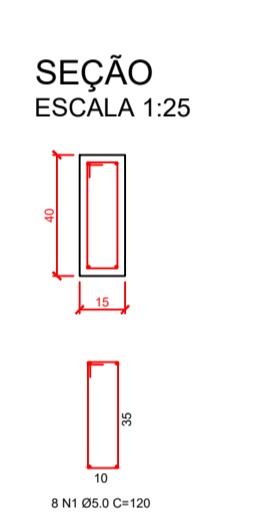
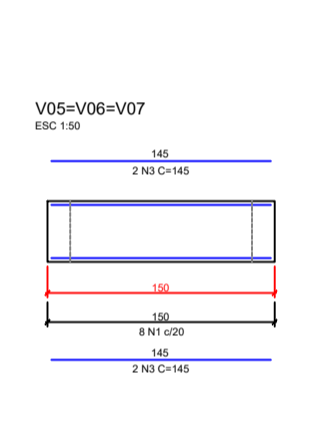
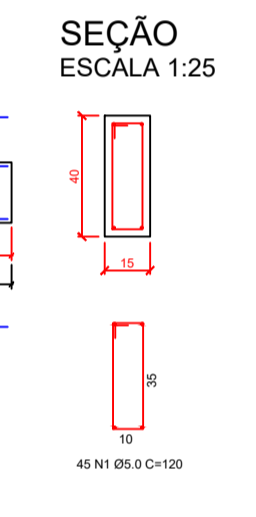
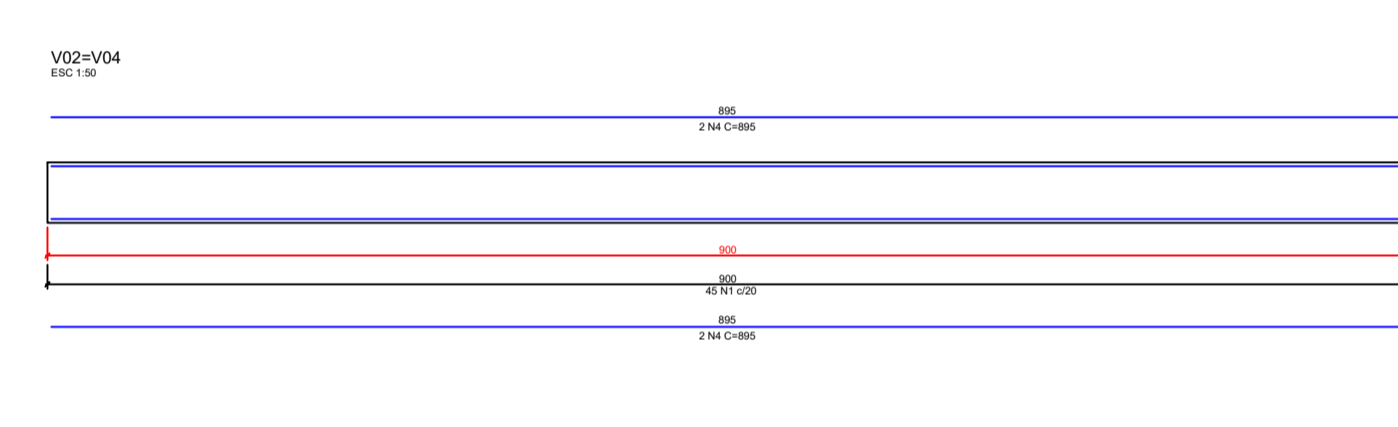
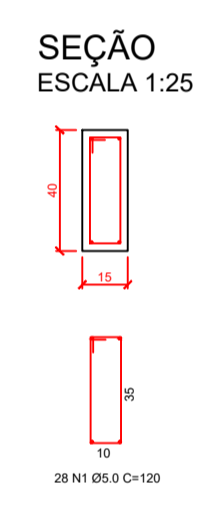
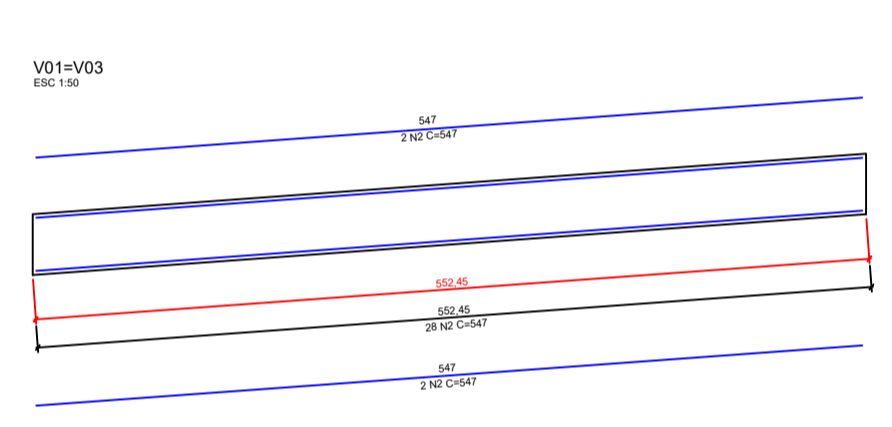
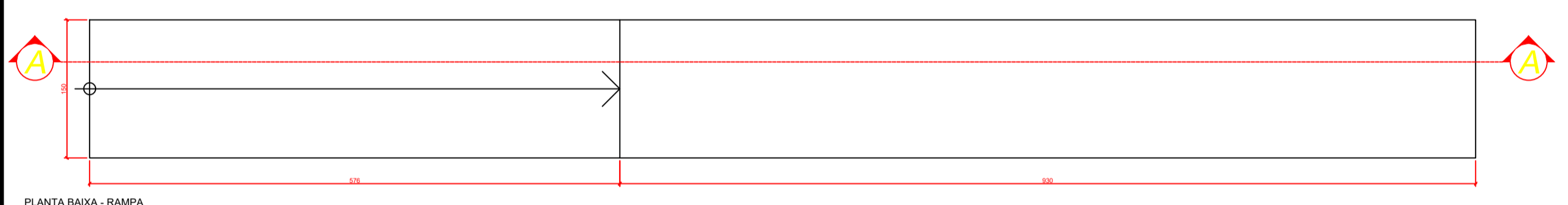
RELAÇÃO DE AÇO

AÇO	N	DIAM	Q	UNIT (CM)	C. TOTAL (CM)
CA-50	2	8.0	32	92	2944,00

RESUMO DO AÇO

AÇO	DIAM	C. TOTAL (M)	PESO + 10% (KG)
CA-50	8.0	29,44	12,80
PESO TOTAL			
CA-50			12,80

VOLUME DE CONCRETO TOTAL (C-25) = 0,45M³  
 ÁREA DE FORMA TOTAL = 3,60M²



RELAÇÃO DE AÇO

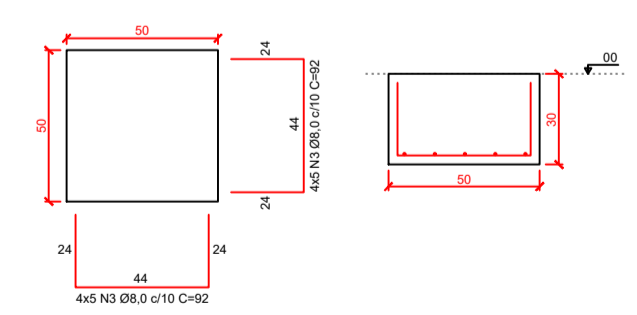
AÇO	N	DIAM	Q	UNIT (CM)	C. TOTAL (CM)
CA-60	1	5.0	81	100	8100
CA-50	2	8.0	8	547	4376
CA-50	3	8.0	12	145	1740
CA-50	4	8.0	8	895	7160

RESUMO DO AÇO

AÇO	DIAM	C. TOTAL (M)	PESO + 10% (KG)
CA-60	5.0	81,00	13,72
CA-50	8.0	132,76	57,68
PESO TOTAL			
CA-60			13,72
CA-50			57,68

VOLUME DE CONCRETO TOTAL (C-25) = 2,01M³  
 ÁREA DE FORMA TOTAL = 26,98M²

S01=S02=S03=S04=S05=S06=S07=S08=  
 S09=S10=S11=S12



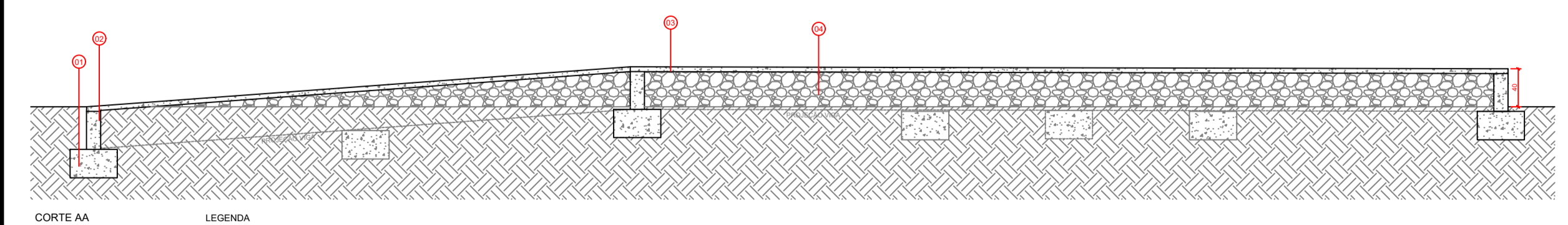
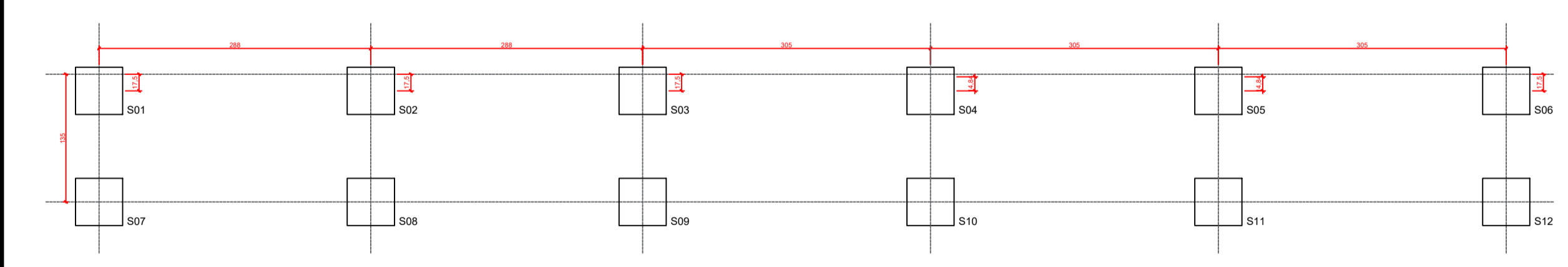
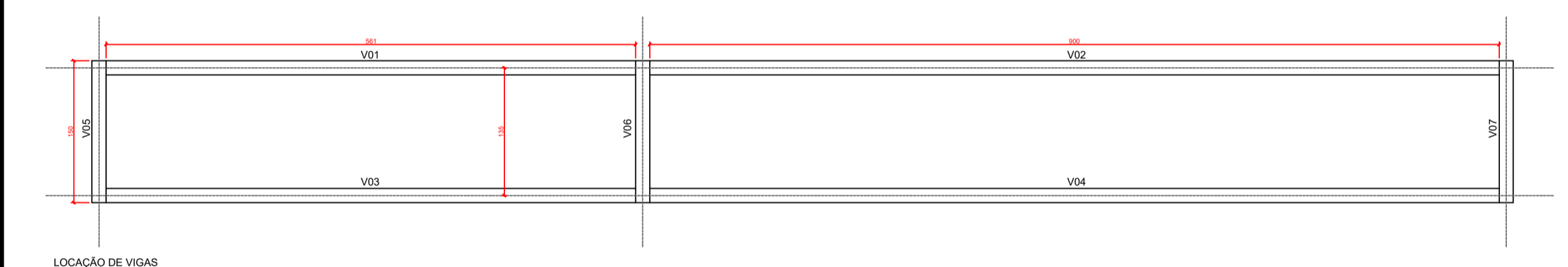
RELAÇÃO DE AÇO

AÇO	N	DIAM	Q	UNIT (CM)	C. TOTAL (CM)
CA-50	2	8.0	96	92	8832

RESUMO DO AÇO

AÇO	DIAM	C. TOTAL (M)	PESO + 10% (KG)
CA-50	8.0	88,32	38,38
PESO TOTAL			
CA-50			38,38

VOLUME DE CONCRETO TOTAL (C-25) = 0,90M³  
 ÁREA DE FORMA TOTAL = 7,20M²



LEGENDA  
 01 - SAPATA 50x50x30CM  
 02 - VIGA BALDRAME  
 03 - CONTRAPISO E PISO DA RAMPA  
 04 - ATERRO COM MATERIAL DE 1ª CATEGORIA

<b>AMURES</b>		ASSOCIAÇÃO DE MUNICÍPIOS DA REGIÃO SERRANA
<b>PREFEITURA MUNICIPAL DE BOCAINA DO SUL (SC)</b>		<b>07</b>
<b>ASSESSORIA TÉCNICA</b>		<b>OBRA :</b>
<b>PROJETO:</b> Indiamara de Oliveira Ribeiro Eng. Civil - CREA 13.4348-3		<b>Projeto Estrutural - Rampas Reforma de UBS e Centro Social de Pessegueiros</b>  Plantas Cortes Detalhes Quantitativos
<b>PREFEITO:</b> João Eduardo Della Justina		
<b>DESENHO :</b> Mariane de Moraes Mota		Escala: <b>INDICADA</b>
		DATA: <b>SET/2021</b>