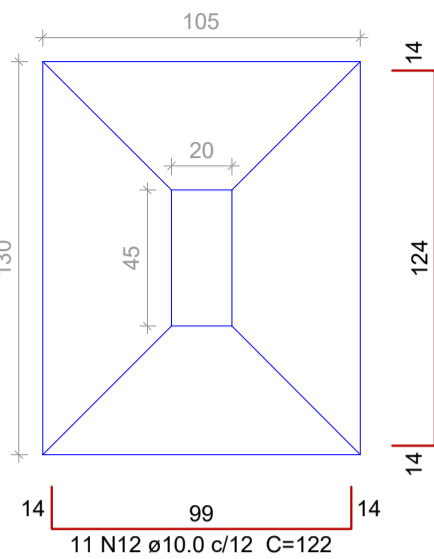
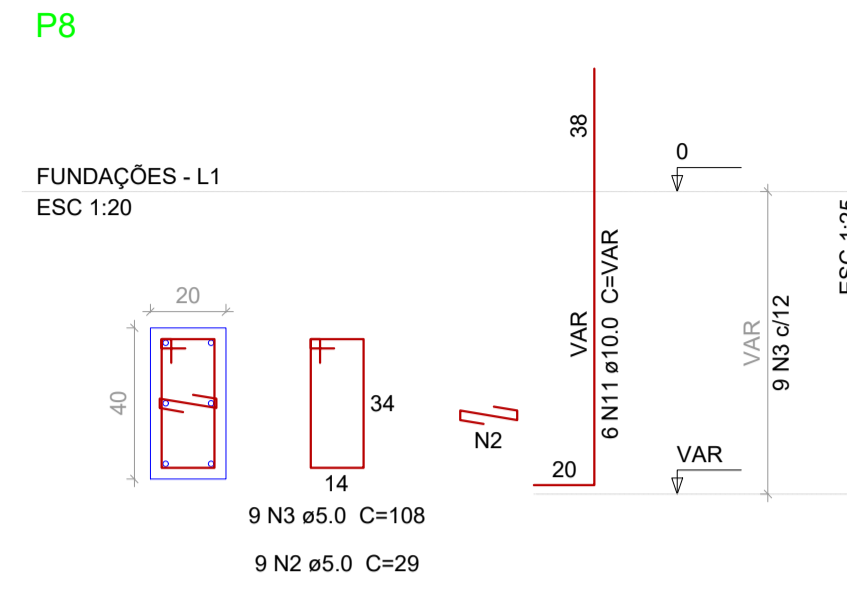
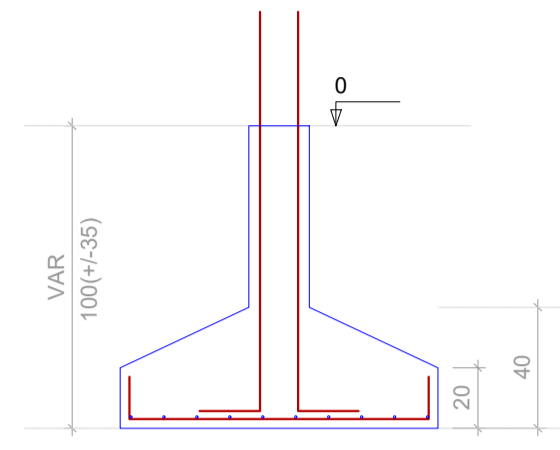


S7
PLANTA
ESC 1:25

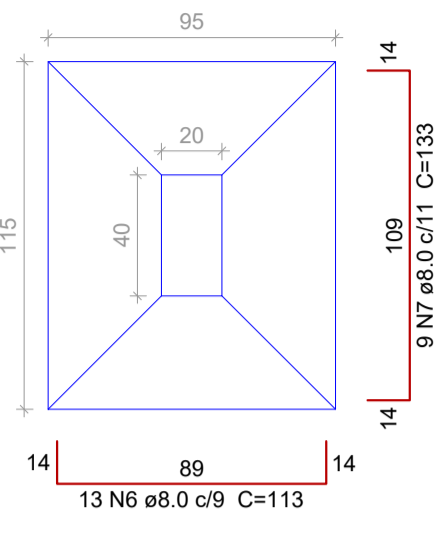


Solo com capacidade de suporte > 2.00 kgf/cm²
Solo compactado sobre a sapata
peso específico > 1700.00 kg/m³

CORTE
ESC 1:25

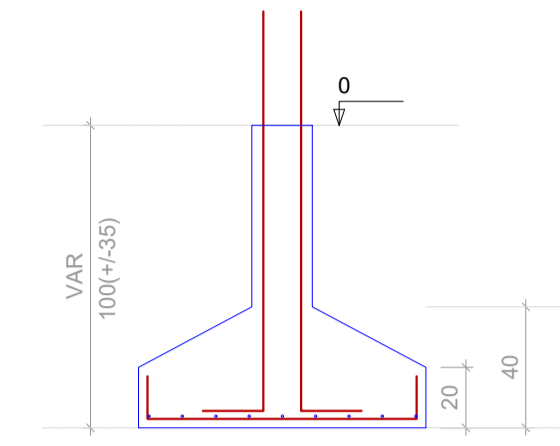


S8
PLANTA
ESC 1:25



Solo com capacidade de suporte > 2.00 kgf/cm²
Solo compactado sobre a sapata
peso específico > 1700.00 kg/m³

CORTE
ESC 1:25



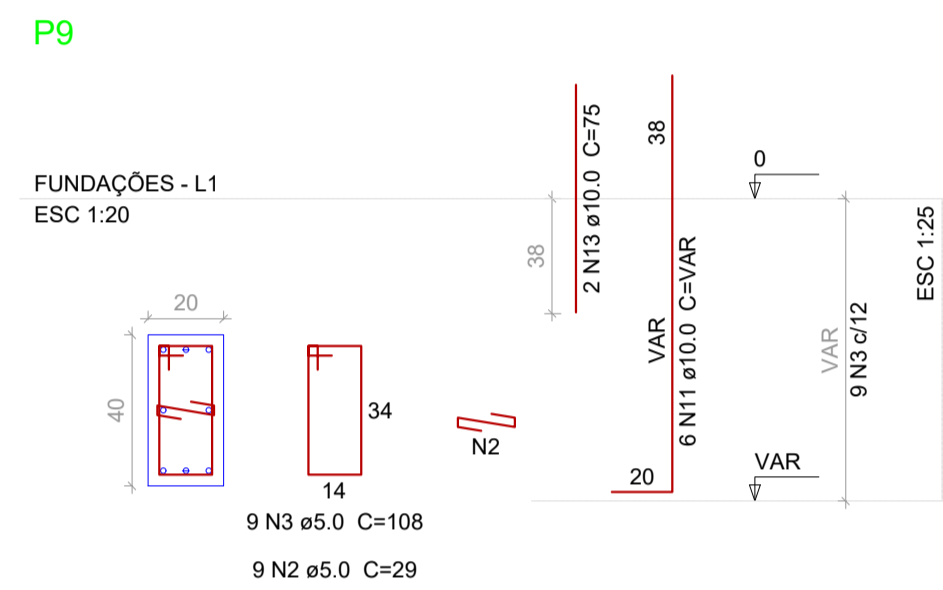
Relação do aço

AÇO	N	DIAM	Q	UNIT (cm)	C.TOTAL (cm)
CA60	1	5.0	9	118	1062
	2	5.0	36	29	1044
	3	5.0	34	108	3672
	4	5.0	7	29	203
CA50	5	8.0	10	148	1480
	6	8.0	13	113	1469
	7	8.0	9	133	1197
	8	8.0	11	113	1243
	9	8.0	8	133	1064
	10	8.0	11	153	1683
	11	10.0	26	VAR	VAR
	12	10.0	11	122	1342
	13	10.0	6	75	450
	14	10.0	13	142	1846
	15	10.0	10	162	1620
	16	10.0	10	127	1270
	17	12.5	4	94	376
	18	12.5	6	VAR	VAR

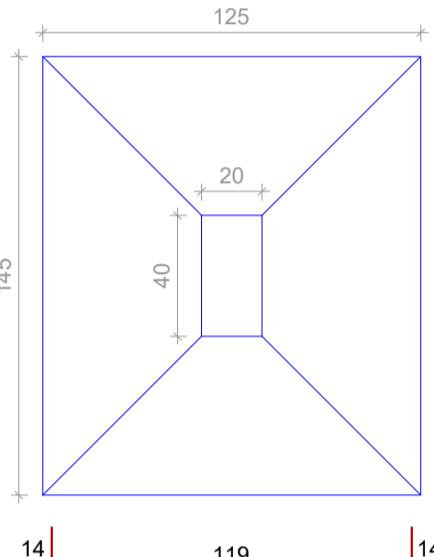
Resumo do aço

AÇO	DIAM	C.TOTAL (m)	PESO + 10 % (kg)
CA50	8.0	81.4	35.3
	10.0	105.9	71.8
	12.5	17.5	18.5
CA60	5.0	59.9	10.1
PESO TOTAL			
CA50		125.6	
CA60		10.1	

Vol. de concreto total (C-30) = 2.32 m³
Área de forma total = 11.37 m²

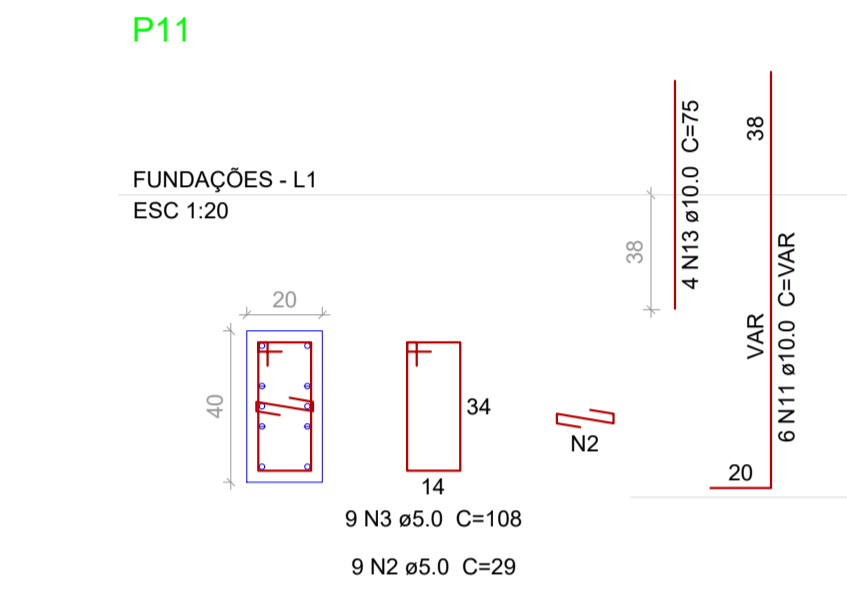
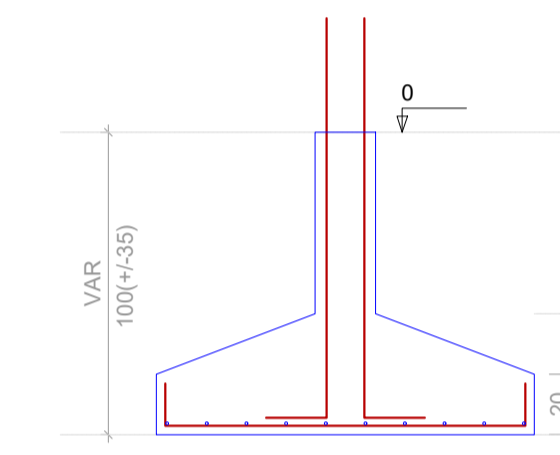


S9
PLANTA
ESC 1:25

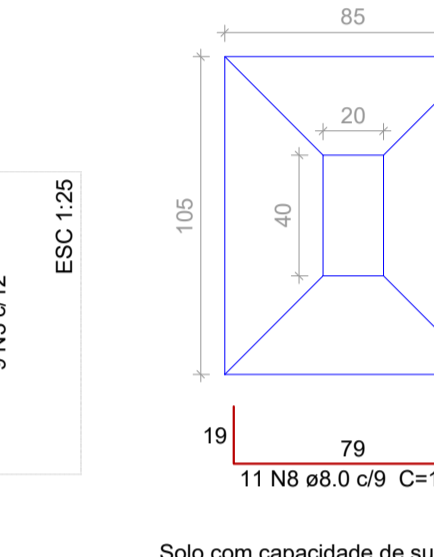


Solo com capacidade de suporte > 2.00 kgf/cm²
Solo compactado sobre a sapata
peso específico > 1750.00 kg/m³

CORTE
ESC 1:25

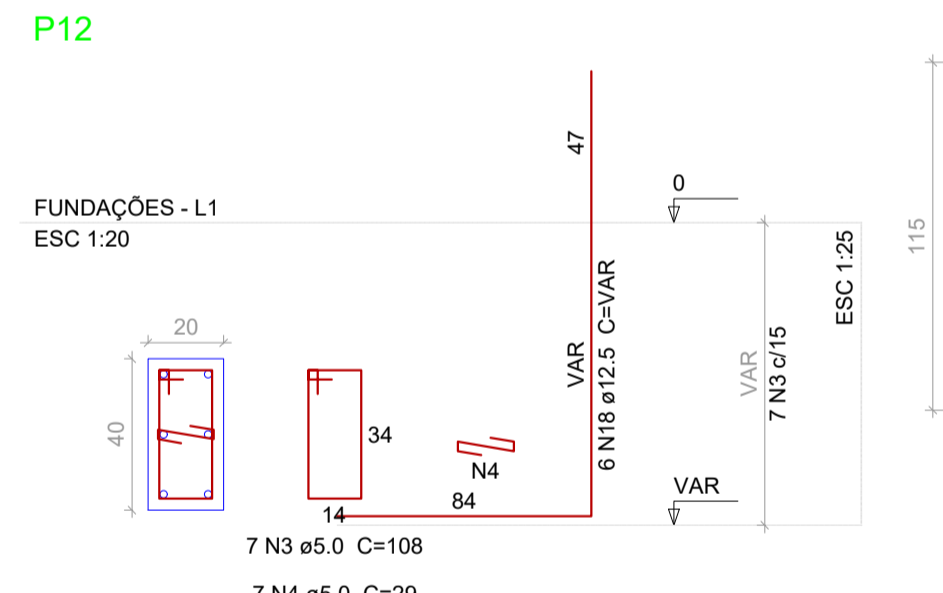
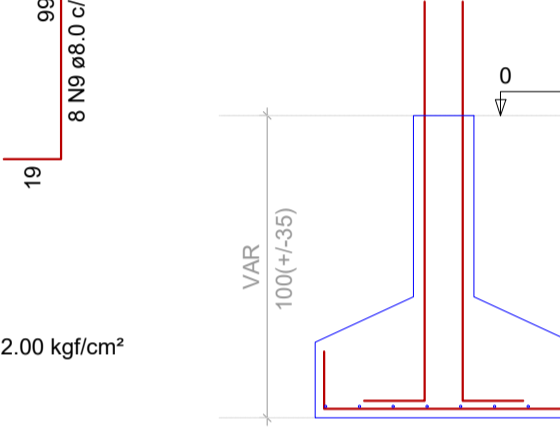


S11
PLANTA
ESC 1:25

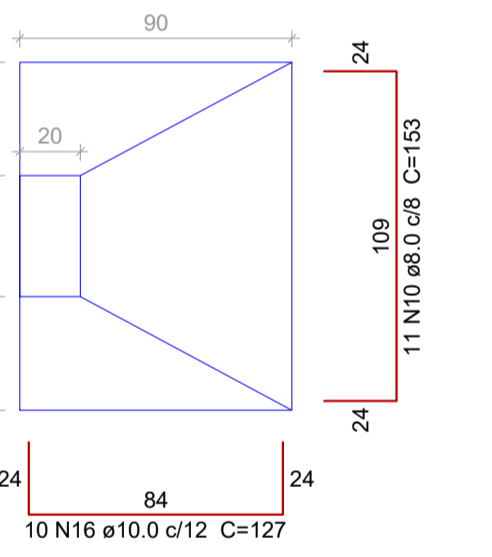


Solo com capacidade de suporte > 2.00 kgf/cm²
Solo compactado sobre a sapata
peso específico > 1750.00 kg/m³

CORTE
ESC 1:25

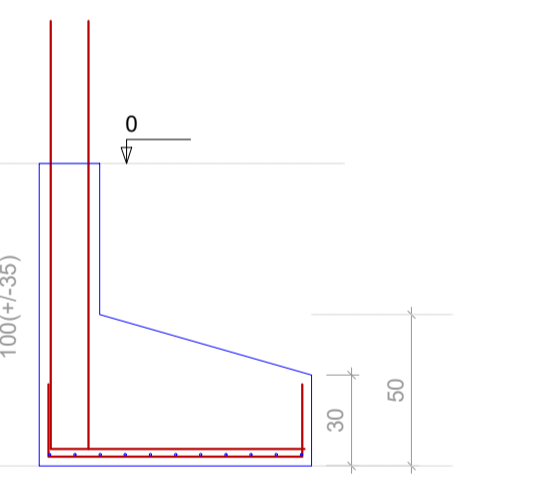


S12
PLANTA
ESC 1:25

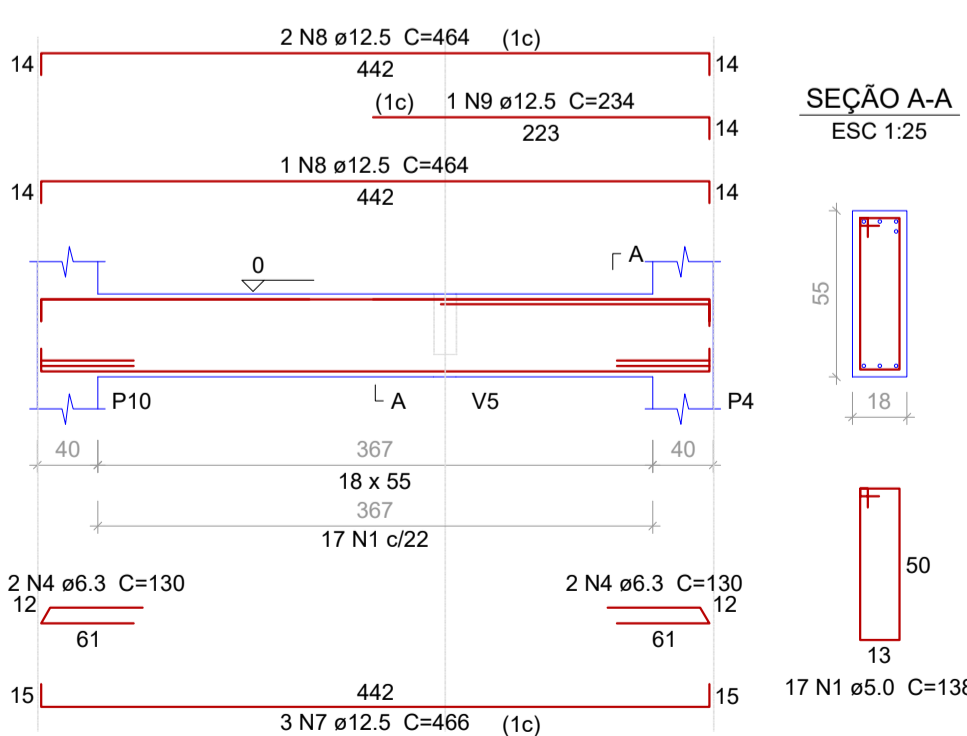


Solo com capacidade de suporte > 2.00 kgf/cm²
Solo compactado sobre a sapata
peso específico > 1750.00 kg/m³

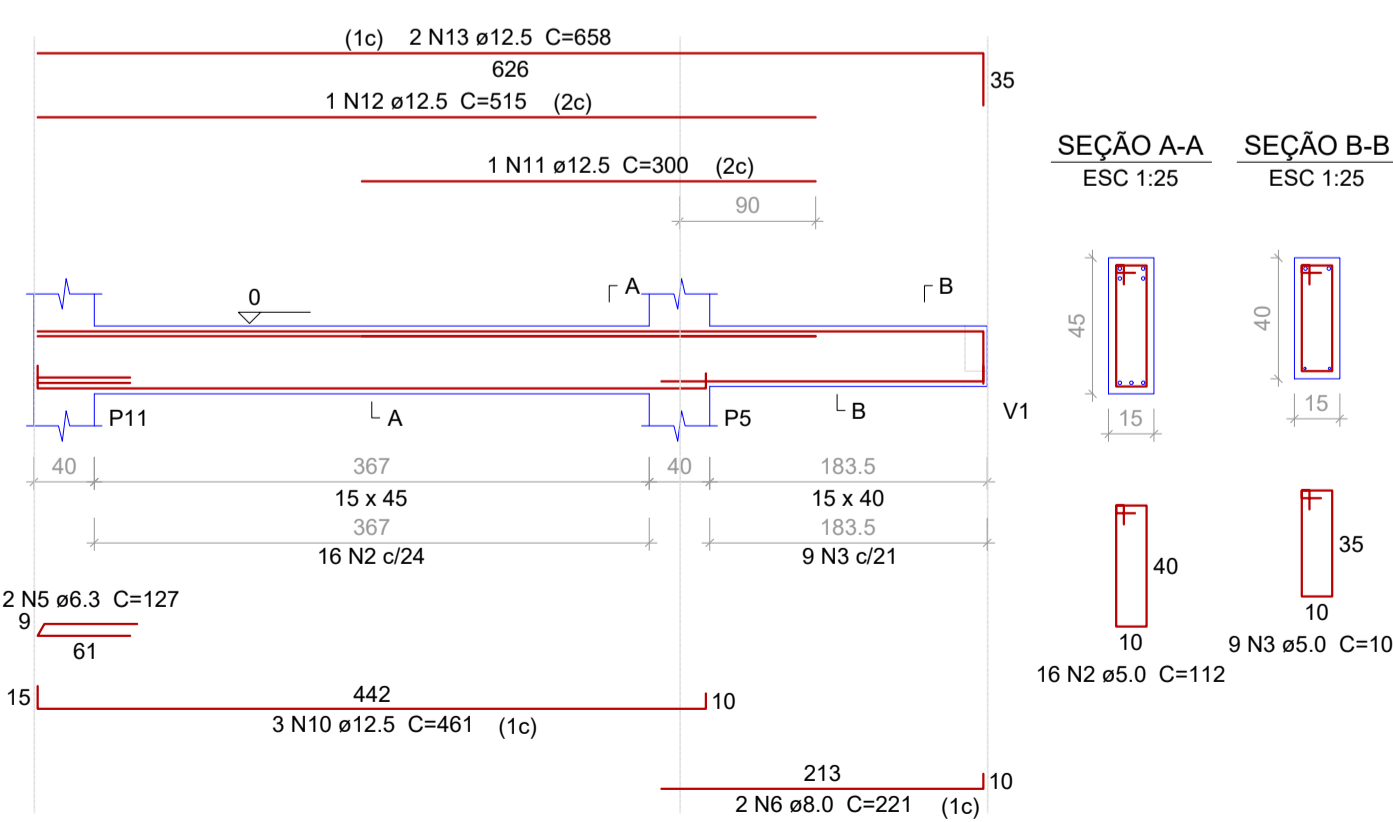
CORTE
ESC 1:25



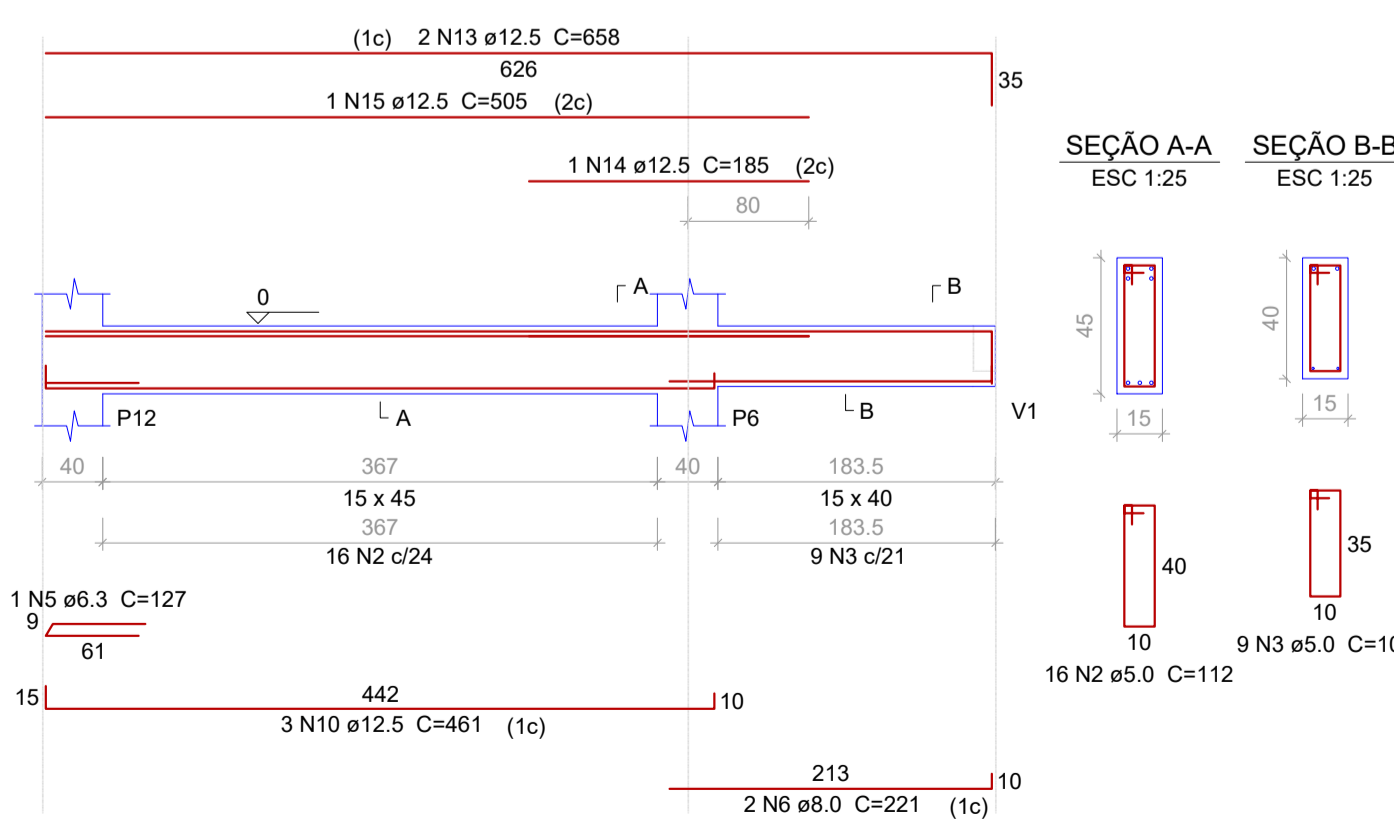
V15
ESC 1:50



V16
ESC 1:50



V17
ESC 1:50



Relação do aço

AÇO	N	DIAM	Q	UNIT (cm)	C.TOTAL (cm)
CA60	1	5.0	17	138	2346
	2	5.0	32	112	3584
	3	5.0	18	102	1836
CA50	4	6.3	4	130	520
	5	6.3	3	127	381
	6	8.0	4	221	884
	7	12.5	3	466	1398
	8	12.5	3	464	1392
	9	12.5	1	234	234
	10	12.5	6	461	2766
	11	12.5	1	300	300
	12	12.5	1	515	515
	13	12.5	4	658	2632
	14	12.5	1	185	185
	15	12.5	1	505	505

Resumo do aço

AÇO	DIAM	C.TOTAL (m)	PESO + 10 % (kg)
CA50	6.3	9.1	2.4
	8.0	8.9	3.8
	12.5	99.3	105.2
CA60	5.0	77.7	13.2
PESO TOTAL			
CA50		111.5	
CA60		13.2	

Vol. de concreto total (C-25) = 1.26 m³
Área de forma total = 18.56 m²

Aprovações:

João Eduardo Della Justina
PREFEITO

Thiago Rocha Karnopp
RESPONSÁVEL TÉCNICO

PREFEITURA MUNICIPAL DE BOCAINA DO SUL

PROJETO ESTRUTURA DE AMPLIAÇÃO PARA UBS

FUNDAÇÕES - F02 E VIGAS BALDRAME - VB2

PREFEITO
João Eduardo Della Justina

DATA
30/11/2022

ESCALAS
Indicadas

RESPONSÁVEL TÉCNICO
Eng. Thiago Rocha Karnopp

CREA/SC n°
163030-6

PRANCHA
03/15